

veer® 1x4



features

High efficiency architectural recessed fluorescent luminaire.

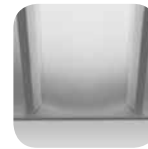
Three distinctive aesthetics offer contemporary styling, and complement architecture.

MicroGroove™ diffusers add texture and visual interest with a ribbed pattern that minimizes lamp image.

details



Flat Diffuser



Radial Diffuser

companion luminaires

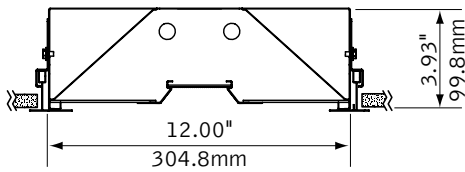


veer® Suspended Linear



veer® Wall Mount

dimensional data

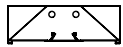


Overall height for luminaire with Air Return is 4.58"

shielding options



regress



flat



radial

lamping



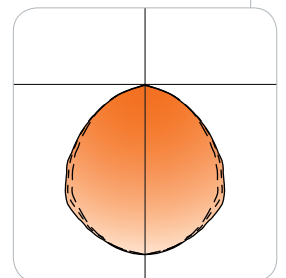
T5/T5H0 Lamps



T8 Lamps

performance

Regress Acrylic Diffuser
1-lamp T5
85.3% Efficiency
956 cd @ 0°



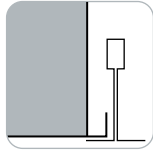
Visit focalpointlights.com for complete photometric data.

fixture:
project:

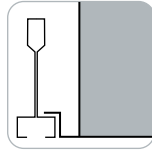
mounting information

grid

specify "G" for flat 9/16" and 15/16" tee or "ST" for 9/16" slot tee grid types.



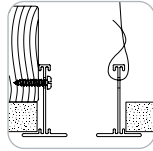
"G" flat tee
Luminaires may be installed in T-bar ceiling systems up to 1 11/16" high*.



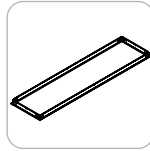
"ST" slot tee

drywall frame kit

specify "DF" Drywall Frame Kit for drywall ceiling conditions.



Use tie-wire or screws to secure frame kit.



cut out dimensions:
1': Min: 12.25"
Max: 12.563"
4': Min: 48.25"
Max: 48.563"

specifications

construction

One piece 20 Ga. steel reflector and housing.
20 Ga. steel ends.
Earthquake brackets supplied as standard.

Weight: 25 lbs

optic

20 Ga. steel reflectors finished in matte satin white powder coat.
.095" thick frosted white acrylic diffusers with linear MicroGroove™ pattern.

electrical

Electronic ballasts are thermally protected and have a Class "P" rating.
Consult factory for dimming specifications and availability.
UL and cUL listed.

sensors

Philips Luxsense daylight sensor measures reflected light from the surface below and dims lamp output when the light level exceeds required level. Output may be adjusted by turning the dial. A 0-10V dimming ballast is required (T5/T8 - DS, T5H0 - D7 standard).

Wattstopper daylight sensor is a closed loop system that measures total light level from daylight and electric light. A 0-10V dimming ballast is required (T5/T8 - DS, T5H0 - D7 standard).

Wattstopper occupancy sensor is a passive infrared sensor designed for cubicles and small offices. It has built-in daylight sensing that will hold lights off when adequate ambient light exists. One sensor controls multiple fixtures.

finish

Polyester powder coat applied over a 5-stage pre-treatment.
Optional Matte Satin White with anti-microbial coating provides 99.99% protection against a broad spectrum of micro-organisms.

ordering

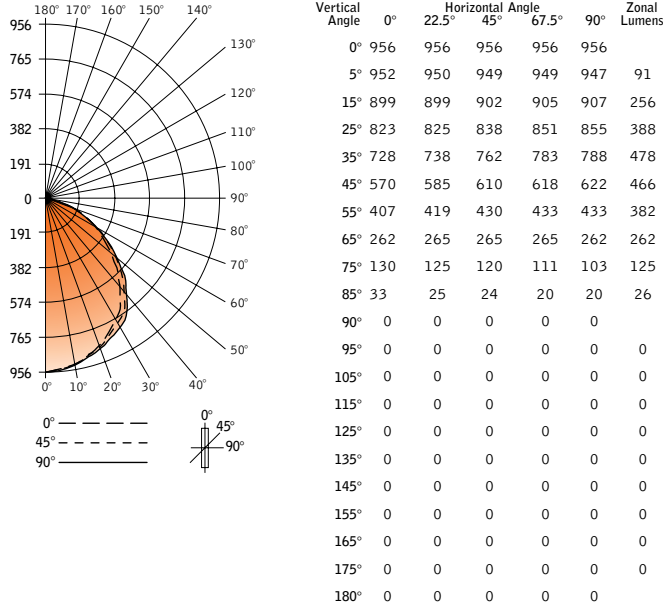
luminaire series		FVR
Veer	FVR	
nominal size		14
1' x 4'	14	
shielding		
Radial Acrylic Diffuser	ACR	
Flat Acrylic Diffuser	ACF	
Regress Acrylic Diffuser	ACG	
lamp quantity		
One Lamp	1	
Two Lamp	2	
lamp type		
T5	T5	
T5H0	T5H0	
T8	T8	
ballast		
Electronic Instant Start <20% THD	E	
Electronic Program Start <10% THD	S	
Electronic Dimming Ballast*	D	
voltage		
120 Volt	120	
277 Volt	277	
347 Volt	347	
mounting		
Grid	G	
Slot Tee	ST	
factory options		
Air Return	AR	
(Overall height with Air Return is 4.58")		
Chicago Plenum	CP	
Drywall Frame Kit	DF	
(Cut out dimensions: Min: 12.25"/Max: 12.563" Min: 48.25"/Max 48.563")		
Emergency Battery Pack*	EM	
HLR/GLR Fuse	FU	
Flex Whip*	FW	
Include 3000K Lamp*	L830	
Include 3500K Lamp*	L835	
Include 4100K Lamp*	L841	
Separate Circuit*	SC	
Separate Circuit Tandem*	SCT	
Labor Saving Master Satellite*	LS	
Ballast Saving Tandem*	BST	
Lutron™ Sensor Feed* (EcoSystem ballast & controls required) (Lutron sensor cannot be fixture mounted)	SF	
Philips® Daylight Sensor*	PY1	
(0-10V dimming ballast required)		
WattStopper™ Daylight Sensor*	WY1	
(0-10V dimming ballast required)		
WattStopper™ Occupancy Sensor*	W01	
finish		
Matte Satin White	WH	
Matte Satin White with Anti-Microbial Coating	WHA	

* for more information see Reference section.

Regress Acrylic Diffuser
veer® 1x4



CANDLEPOWER DISTRIBUTION



Filename: FVR141T5ACG.IES
Catalog #: FVR-14-ACG-1-T5-120-G-WH
Efficiency: 85%
Test #: 16775.0

LUMEN SUMMARY

Zone	Lumens	% Lamp	% Fixt
0°-30°	734	25.3	29.7
0°-40°	1212	41.8	49.0
0°-60°	2060	71.0	83.3
0°-90°	2473	85.3	100.0
Total Luminaire	0°-180° 2473	85.3	100.0

LUMINANCE DATA (CD/M²)

Vertical Angle	0°	45°	90°
45°	2467	2640	2692
55°	2172	2294	2310
65°	1897	1919	1897
75°	1537	1419	1218
85°	1159	843	702

CO-EFFICIENTS OF UTILIZATION

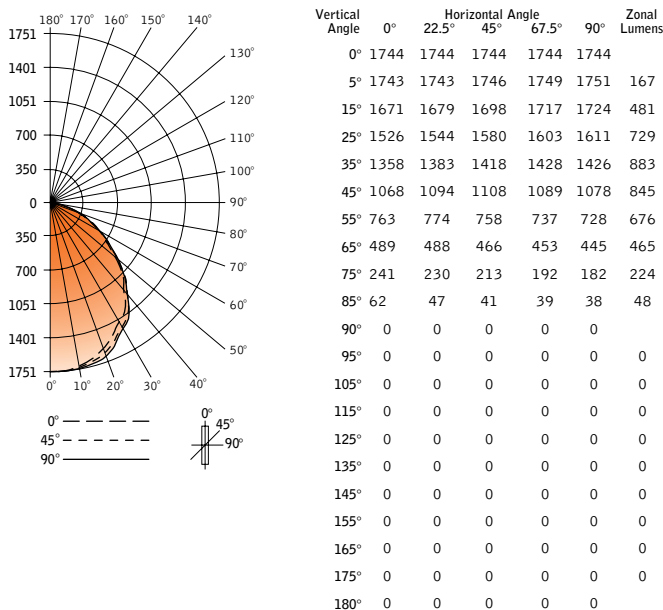
Floor	80				70				20										
Ceiling	50				30				10										
Wall	70	50	30	10	70	50	10	50	10	50	10	50	10	50	10	50	10	00	
RCR 0	102	102	102	102	99	99	99	95	95	91	91	87	87	85	85	85	85	85	85
1	94	91	87	84	92	89	83	85	81	82	78	79	76	74	74	74	74	74	74
2	87	80	75	71	84	79	70	76	68	73	67	71	65	64	64	64	64	64	64
3	80	72	65	60	78	70	60	68	59	66	58	64	57	55	55	55	55	55	55
4	73	64	57	52	72	63	52	61	51	59	50	57	50	48	48	48	48	48	48
5	67	57	50	44	65	56	44	54	44	52	43	51	43	41	41	41	41	41	41
6	62	51	44	39	60	50	38	49	38	47	38	46	37	36	36	36	36	36	36
7	57	46	39	34	56	45	34	44	33	43	33	42	33	31	31	31	31	31	31
8	53	41	34	29	51	41	29	39	29	38	29	37	29	27	27	27	27	27	27
9	48	37	30	25	47	36	25	35	25	34	25	34	25	23	23	23	23	23	23
10	45	34	27	22	44	33	22	32	22	31	22	31	22	20	20	20	20	20	20

Go to www.focalpointlights.com for additional photometric data.

Regress Acrylic Diffuser
veer® 1x4



CANDLEPOWER DISTRIBUTION



Filename: FVR142T5ACG.IES
Catalog #: FVR-14-ACG-2-T5-120-G-WH
Efficiency: 78%
Test #: 16776.0

LUMEN SUMMARY

Zone	Lumens	% Lamp	% Fixt
0°-30°	1376	23.7	30.5
0°-40°	2259	39.0	50.0
0°-60°	3780	65.2	83.7
0°-90°	4517	77.9	100.0
Total Luminaire	0°-180° 4517	77.9	100.0

LUMINANCE DATA (CD/M²)

Vertical Angle	0°	45°	90°
45°	4623	4796	4666
55°	4071	4045	3885
65°	3541	3375	3223
75°	2850	2519	2152
85°	2177	1440	1334

CO-EFFICIENTS OF UTILIZATION

Floor	80				70				20										
Ceiling	50				30				10										
Wall	70	50	30	10	70	50	10	50	10	50	10	50	10	50	10	50	10	00	
RCR 0	93	93	93	93	91	91	91	87	87	83	83	79	79	78	78	78	78	78	78
1	86	83	80	77	84	81	76	78	74	75	71	72	69	68	68	68	68	68	68
2	79	74	69	65	77	71	64	69	63	67	61	65	60	58	58	58	58	58	58
3	73	66	60	55	71	65	55	62	54	60	53	58	52	51	51	51	51	51	51
4	67	59	52	48	66	58	47	56	47	54	46	52	46	44	44	44	44	44	44
5	62	52	46	41	60	51	41	50	40	48	40	47	39	38	38	38	38	38	38
6	57	47	40	36	55	46	35	45	35	44	35	42	35	33	33	33	33	33	33
7	52	42	36	31	51	42	31	40	31	39	31	38	30	29	29	29	29	29	29
8	48	38	32	27	47	37	27	36	27	35	27	34	26	25	25	25	25	25	25
9	44	34	28	23	43	34	23	33	23	32	23	31	23	22	22	22	22	22	22
10	41	31	25	21	40	31	21	30	21	29	21	28	20	19	19	19	19	19	19

Go to www.focalpointlights.com for additional photometric data.

note: Photometric testing performed in an independent lab with standard lamps and ballasts. Lamp and ballast type and configuration will affect photometric performance.