

Setting up the Smart Life App

Step 1

Method 1: Scan the below QR code and install the Smart Life App,



Method 2: Search for "Smart Life" to download in App Store or Google Play and install it for iOS/Android. This App is compatible with mobile devices IOS 8.0 and above and Android 4.0 and above

Step 2

Launch the Smart Life App, the App will ask you to register your device. Enter your phone number or email and select the country you live in.

Step 3

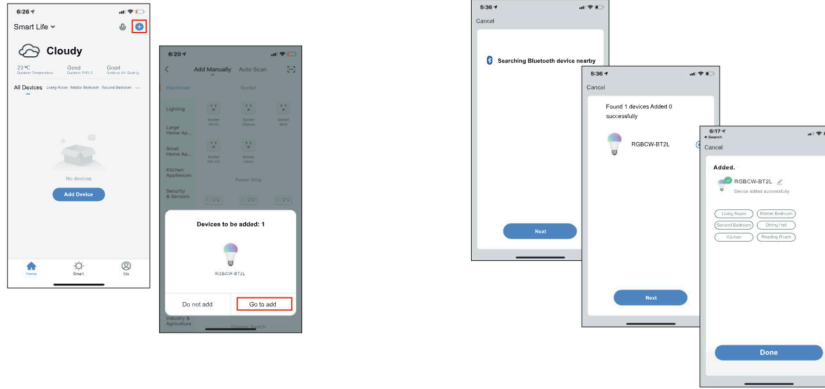
After inputting phone number, you will receive a text with a registration code. And if you choose email you will be asked to create a password, Input the registration code you received or create password if email method chosen.

Tips

Fast register through other communication Apps which show on the bottom of the home page of "Smart Light" App, such as Facebook, We chat. It is recommended to register by email or mobile number if you need to use Amazon Alexa and Google Home for voice control.

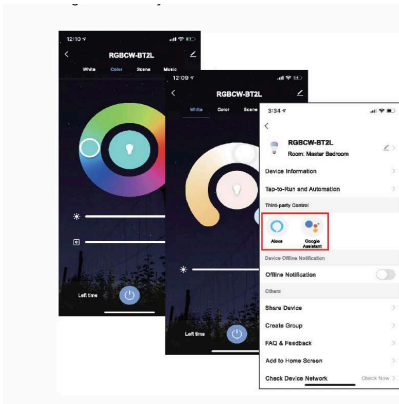
Quick mode Configuration (Recommend)

1. Make sure that Bluetooth connectivity on your device is enabled.
2. Turn ON-OFF the smart light for 3 times until it blinks rapidly. When the smart light blinks rapidly, it's ready for configuration.
3. On the App, tap "+" to add the light
4. When the light will be shown on the page, tap "Go to add"
5. The App will searching for bluetooth devices nearby and add them.
6. When the device is added, you can edit its name, choose its location, then tap "Done".
7. Now you can control the smart device through "Smart Life" App.



Control Devices-Individual Control

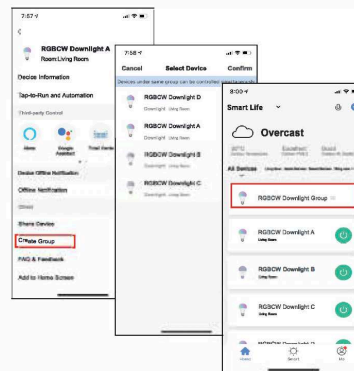
1. Click the smart light on the homepage to open control panel.
2. When the control panel is dark, it means the light is OFF status and only the timer can be accessed
3. Click the button to turn on the light, there are four columns "White" "Color" "Scene" "Music" can be choosed, then DIV your smart light on your request.
4. Click "⌵" at the top right corner of control panel to manage the smart light individually.



5. Click "Alexa" or "Google Assistant" and there will be detailed instructions of how to use voice control.

Control Devices - Group Control

1. On the individual control page, click "Creat Group".
2. Select the smart lights which you would like to group control and click "Save", enter group name and confirm.
3. Operate the lights by group at the group control panel, click "⌵" at top right corner to configure or dismiss groups.
4. The group that have been created can be viewed at homepage and managed with hotkey.



Home/Member Management

1. Click on Home Management, then Create a Home
2. Set your "Home Name" and u-Home Location-
3. Click "Add Room" to add a room if needed

TIP: If you want to join a home you must contact the administrator of that home to get an invitation code, enter it and confirm.

Personal-Modify Login Password

1. Click "Me" -> "Settings" -> "Account" -> "Account and Security". Tap on "Pattern Lock", and set a pattern password.
2. You will have to use the pattern password to access the App when you open it every time.
3. Click "Forgot pattern lock" if you forget your pattern password, it will help to set a new one.

