



Saber Plane 10225

Architectural Lighting

Installation Instructions

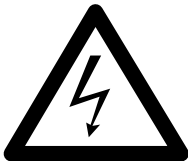


WHEN USING ELECTRICAL EQUIPMENT, BASIC SAFETY PRECAUTIONS SHOULD ALWAYS BE FOLLOWED, INCLUDING THE FOLLOWING:

READ AND FOLLOW ALL SAFETY INSTRUCTIONS

1. Read carefully before installing fixture. Retain for future reference.
2. Make certain power is OFF before starting installation or attempting any maintenance.
3. FAILURE TO FOLLOW INSTRUCTIONS MAY RESULT IN SERIOUS INJURY OR DEATH.

INSTALLATION INSTRUCTIONS



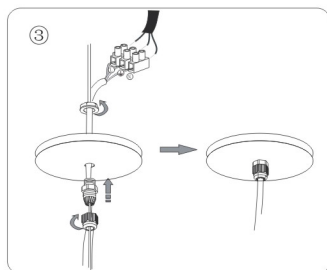
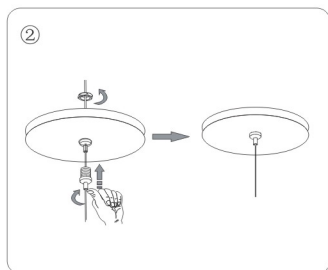
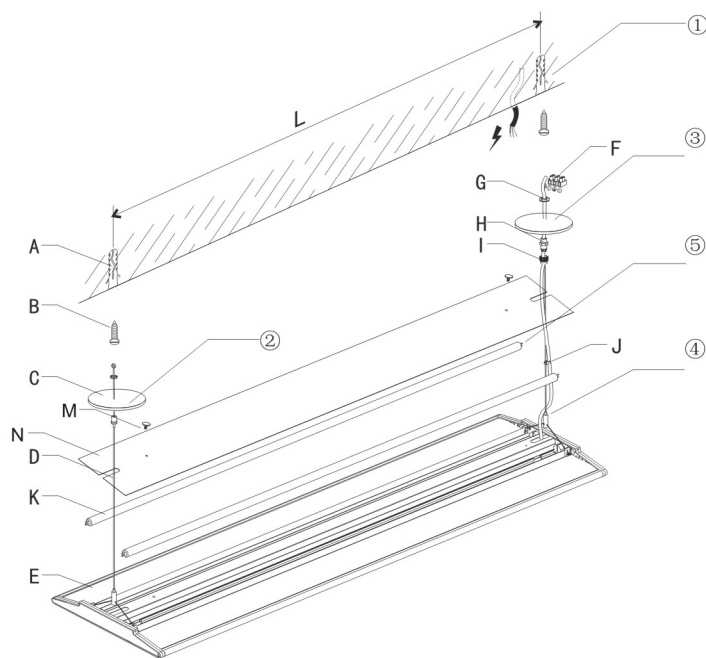
WARNING: TO PREVENT ELECTRICAL SHOCK, TURN OFF ELECTRICITY AT FUSE BOX BEFORE PROCEEDING.

Packing List

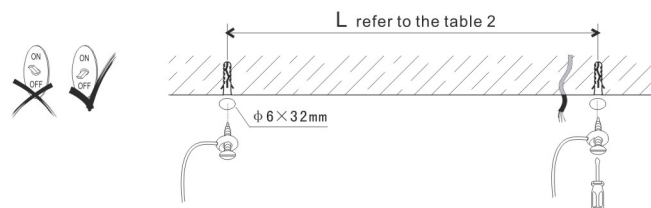
Attached table1: Packing list

No.	Description	QTY.	No.	Description	QTY.
A	Inflatable screw	2	H	Thread strain relief	1
B	S/T/S HD	2	I	Thread strain relief screw 2	1
C	Ceiling plate	2	J	Plastic wire clasp	1
D	Steel wire	2	K	Tube	2
E	Suspended lamp	1	M	M4X8 Mushroom screw	2
F	Plastic teiminal	1	N	Dustproof shade	1
G	Thread strain relief screw 1	1		Installation Instruction	1

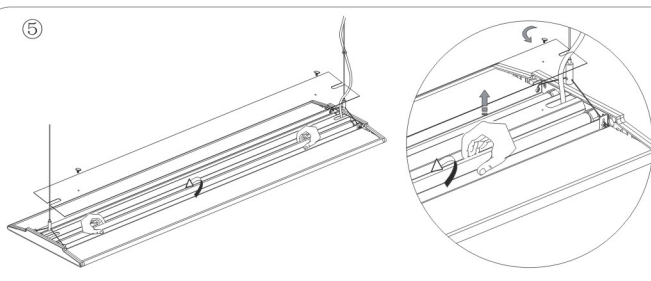
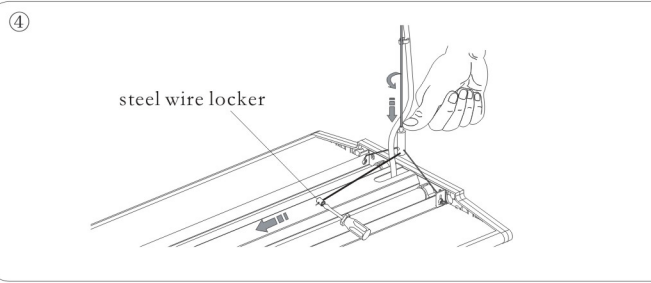
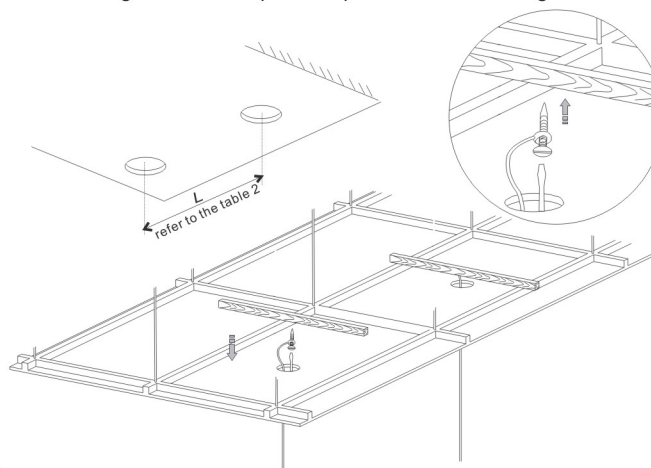
INSTALLATION INSTRUCTIONS



① Installing mode A: cement / board ceiling



Installing mode B: suspended plasterboard ceiling



Attached table1: Packing list

No.	Description	QTY.	No.	Description	QTY.
A	Inflatable screw	2	H	Thread strain relief	1
B	S/T/S HD	2	I	Thread strain relief screw 2	1
C	Ceiling plate	2	J	Plastic wire clasp	1
D	Steel wire	2	K	Tube	2
E	Suspended lamp	1	M	M4X8 Mushroom screw	2
F	Plastic teiminal	1	N	Dustproof shade	1
G	Thread strain relief screw 1	1		Installation Instruction	1

Attached table2: The pendent hole gap installation

Hole gap Model	Power	2×28W	3×28W	4×28W	2×35W	3×35W	4×35W	2×54W	3×54W	4×54W
REY 4-HOUSE		1160mm	—	2360mm	1460mm	—	—	1160mm	—	—
REY 4-8-HOUSE		1160mm	—	2360mm	1460mm	—	—	1160mm	—	—
EVIAP-HOUSE		1160mm	—	—	—	—	—	1160mm	—	—