

### INTENDED USE

#### Step 1:

**Method 1,** Scan the below QR code and install the Smart Life App.



**Method 2,** Search for "Smart Life" to download in App Store or Google Play and install it for iOS/Android.

**Tips:** This App is compatible with mobile devices iOS 8.0 and above and Android 4.0 and above.

#### Step 2:

Launch the "Smart Life" App, the App will ask you to register your device.

Enter your phone number or email and select the country you live in.

#### Step 3:

After inputting phone number, you will receive a text with a registration code. And if you choose email you will be asked to create a password. Input the registration code you received or create password if email method chosen.

#### Tips:

Fast register through other communication apps which show on the bottom of the homepage of "Smart life" App, such as Facebook, Wechat.

It is recommended to register by email or mobile number if you need to use Amazon Alexa and Google Home for voice control.



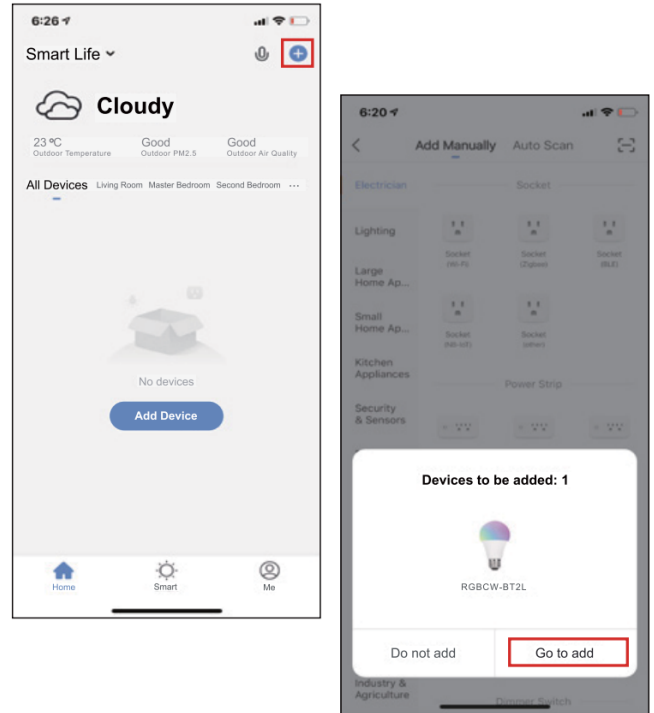
### Quick mode Configuration (Recommend)

1-Before connecting, please open the Bluetooth and please make sure your smart phone or device is connecting with your Bluetooth successfully.

2-Turn ON-OFF the smart light for 3 times until it blinks rapidly. (If the smart light blinks rapidly when turn on the power, it means it's ready for configuration already.)

3-Open the App and click "+" to add device

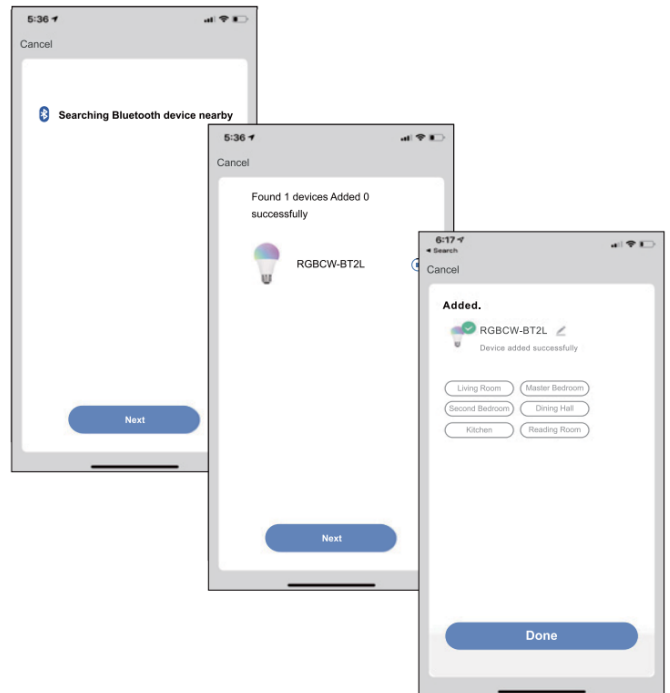
4-The device will be showed on the page automatically, click "Go to add",



5-Searching Bluetooth device nearby and add devices.

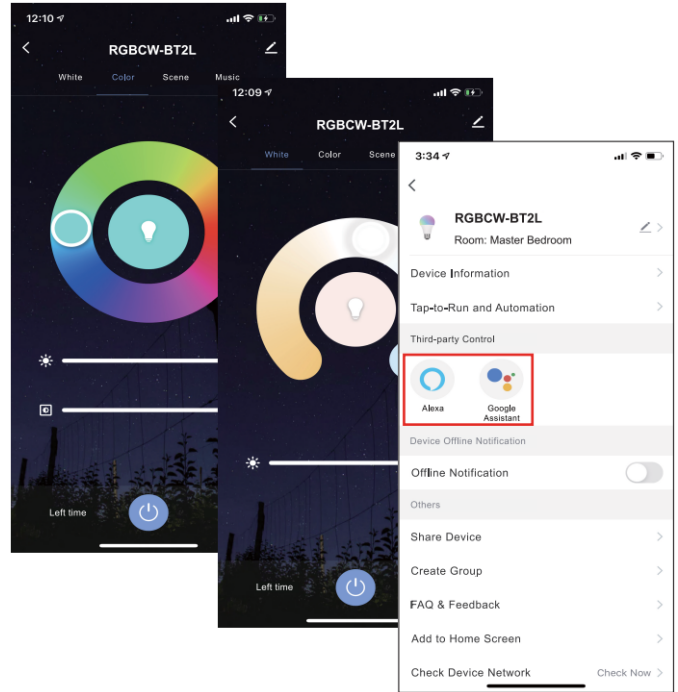
6-When the device is added, you can edit its name, choose its location, then click "Done"

7-Now you can control the smart device through "Smart Life" App,



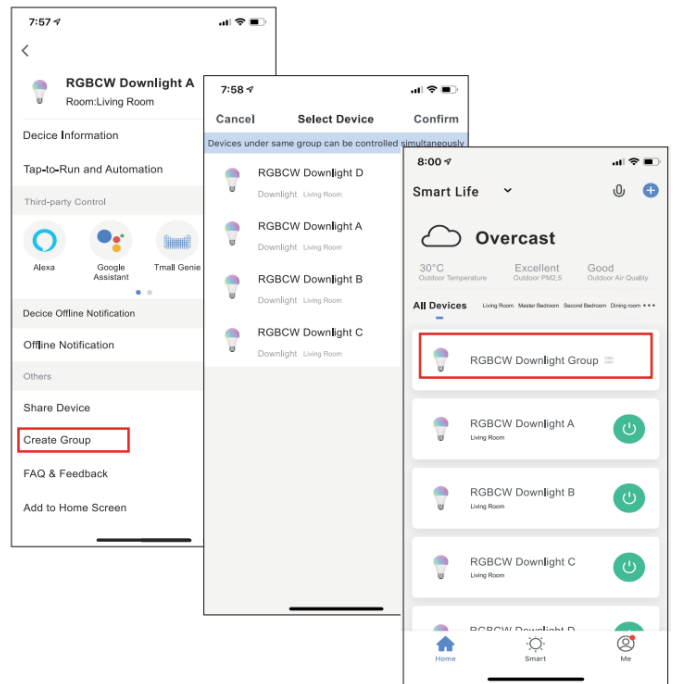
### Control Devices-Individual Control

- 1- Click the smart light on the homepage to open control panel.
- 2- When the control panel is dark, it means the light is OFF status and only the timer can be accessed
- 3- Click the button to turn on the light, there are four columns "White", "Color", "Scene" & "Music" can be chosen, then DIY your smart light on your request.
- 4- Click the edit icon at the top right corner of control panel to manage the smart light individually.
- 5- Click "Alexa" or "Google Assistant", there will be detailed instructions of how to realize voice control.



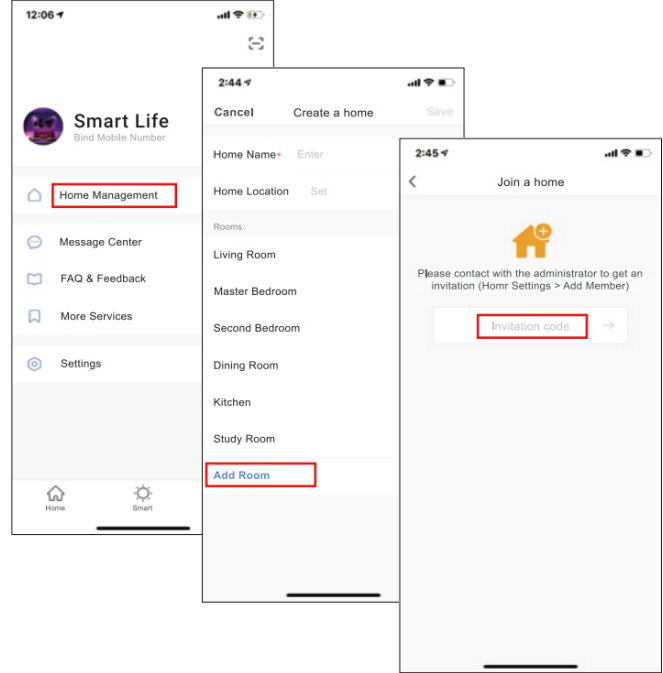
### Control Devices - Group Control

- 1- On the individual control page, click "Create group"
- 2- Select the smart lights which you would like to group control and click "Save", enter group name and confirm.
- 3- Operate the lights by group at the group control panel, click the edit button at top right corner to configure or dismiss groups.
- 4- The group that have been created can be viewed at homepage and managed with hotkey.



### Home/Member Management

- 1- Click "Me" -> "Home Management" -> "Create a Home" page
- 2- Set your "Home Name" and "Home Location"
- 3- Click "Add Room" to add a room if needed
- 4- if you want to join a home, please contact with administrator to get an invitation code, enter it and confirm.



### Personal-Modify Login Password

- 1- Click "Me"->"Settings"->"Account"->"Account and Security"-> activate "Pattern Lock", and set a pattern password
- 2- You will have to use the pattern to access the App when you open it every time.
- 3- Click "Forgot pattern lock" if you forget your pattern password, it will help to set a new one .

