

"CROSS DESIGN" INSTALL INSTRUCTIONS

WARNING: Disconnect power at fuse or breaker prior to performing any electrical installation, or service.

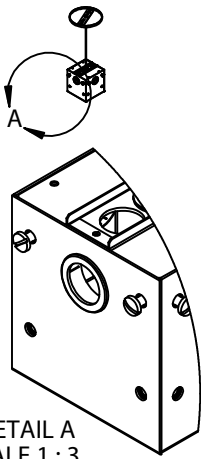
ning any electrical

NOTE: This product must be installed in accordance with local and national electrical codes and procedures

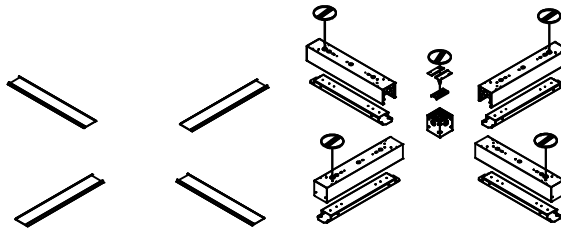
al and national



STEP ONE: HANGING KIT: Place the hanging kits and canopies into ceiling where needed. REFER TO HANGING KIT INSTALL INSTRUCTION

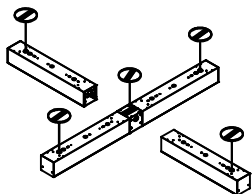
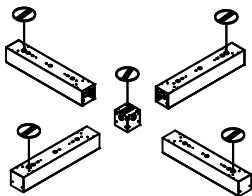


DETAIL A
SCALE 1 : 3



STEP TWO: CONNECTING UNATTACHED FIXTURES TO THE JOINER BOX

- Remove the lens from the fixtures and place to the side
- attach the end of cable harness from the fixture to the harness coming out from the joiner box
- Remove the DC-DT kit partially, as the wiring harness is now connected to the wiring from the j-box. You are only removing the DC-DT kit to allow for room for the 10-32 bolt (4x) to pass through the corresponding 10-32 holes in the end cap from the fixture into the corresponding 10-32 holes inside the j-box.
- The top of the j-box has 10-32 bolts already installed. The open section of the fixture has keyholes that slip over and drop into place with the keyhole slots, just tight placement. The remaining needed 10-32 bolts will be placed within the joiner box during shipment.
- For greater detail REFER TO JOINER BOX INSTALLATION INSTRUCTIONS



EM CROSS INSTALLATION: On this assembly, with the emergency ballast, two of the fixtures will already be wired and mounted to the joiner box. DO NOT remove these fixtures from the joiner box, as the wiring is already done and the fixtures are running through the j-box to connect the fixture with the EM to the driver. At this moment you just need to connect the fixtures that are currently unattached. REFER TO JOINER BOX INSTALLATION INSTRUCTIONS

be wired and
ures from
unning thru
fixture with
the fixtures

