

Project Name: \_\_\_\_\_ Type: \_\_\_\_\_ Quantity: \_\_\_\_\_

### INTENDED USE

Diecast in aluminum and capable of withstanding vehicular weight, our in-ground, landscape LED well light includes an open face cover to maximize light output with tempered glass lens and a faceplate to protect from nature's elements. This light is manufactured for almost any location, soil and concrete.

### DETAILS

**Dia 7.56" x W 7.56" x H 10" Construction:** Cast Aluminum w/ PVC Sleeve

**Installation:** Rated for In-Ground Soil and Concrete Applications

**Wire Length:** 15"

**Lens:** Clear, Heat Resistant, Tempered Glass

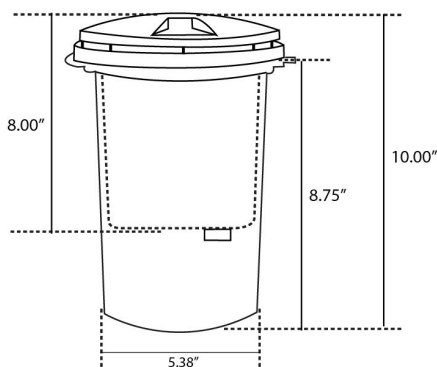
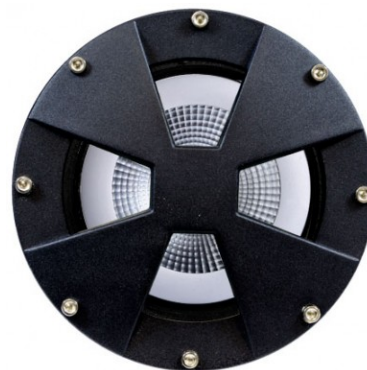
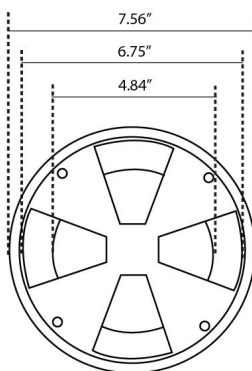
**RGBW Controller:** Bluetooth via Smart Life - Smart Living mobile app

(available for iOS and Android devices) **CRI:** 80+

**Life:** 35,000 Hours

**Listing:** ETL Approved for Wet Location

**Lamp Type:** PAR38 LED Included



**Ordering Information:** Example: (9098-RGBW-BK)

Model	Lamp Type	Color Temp	Finish
9098	<b>RGBW</b> RGBW   15W   1300 lms   120° Beam Spread   120V <b>W-25</b> White   12.5W   1200 lms   25° Beam Spread   120-277V <b>W-40</b> White   12.5W   1200 lms   40° Beam Spread   120-277V	<b>(Blank)</b> RGB + W (27-64K) <b>27K</b> 2700K <b>30K</b> 3000K <b>40K</b> 4000K <b>50K</b> 5000K	<b>BK</b> Black <b>BR</b> Bronze <b>GR</b> Gray