

Project Name: _____ Type: _____ Quantity: _____

INTENDED USE

This multipurpose, in-grade well uplight offers outstanding performance for showcasing trees, shrubs and pathways for either accent or safety and security lighting in residential and commercial projects. With a cast brass finish, the durable architectural product provides residential and commercial buildings with solid construction and long-lasting illumination. Our fixture comes with an anti-moisture migration connection, a waterproof seal-tight enclosure and warm white color temperature suitable for Light-Emitting Diode (LED) landscape lighting.

FEATURES

Construction: 316 marine-grade stainless steel face plate. Injected molded composite housing for high UV stability.

Adjustability: Fixture socket tilts for $\pm 25^\circ$

Lens: Clear and heat-resistant flat glass

Color Temperature: 2700K Warm White

Mounting: Mount in-ground direct burial or concrete encasement **Voltage:** 12V AC/DC

Dimmable

CRI: 80

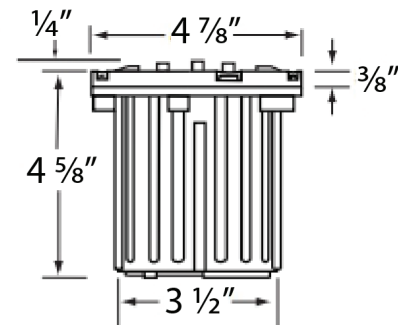
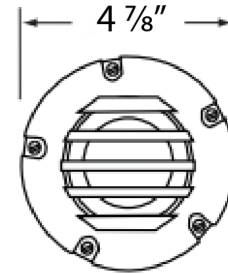
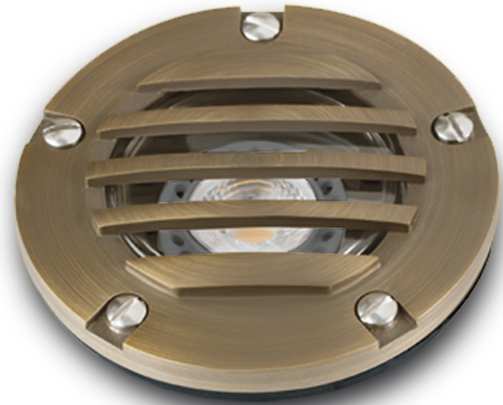
Ambient Temperature: -22°F to $+122^\circ\text{F}$

Lumens: 270 lumens (3.5 watts) and 450 lumens (5 watts)

Warranty: Limited lifetime warranty on fixture stainless steel face plate only. 10 year warranty on housing against manufacturer's defects; 5 year Warranty on LED

3' 18-2 SJTW burial cord comes standard.

Remote 12V transformer required, may be ordered separately.



Ordering Information: Example: (9028-5-AB)

| Model | Wattage | Beam Spread | Finish | Options |
|-------|--------------------------|-------------------|-------------------|----------------------|
| 9028 | 3 ¹ 3.5 Watts | F 38° Flood | AB Antique Bronze | CP Concrete Pour Kit |
| | 5 5 Watts | WF 60° Wide Flood | GM Gun Metal | |

¹ Beam spread for the 3.5 W option is 45°