

Project Name: _____ Type: _____ Quantity: _____

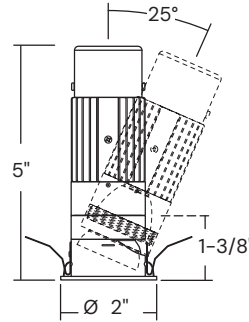
Alcon Lighting 14122 1.5-Inch Micro Recessed LED Light

INTENDED USE

Alcon Lighting builds premium lighting products to specification for commercial, hospitality, healthcare, and residential projects. The 1.5-Inch Micro Recessed Round LED Light provides exceptional ambient, accent, and task lighting in low to medium height ceilings. Also available with wallwash and adjustable tilt option up to 25°. Ideal for High-End Residential, Architectural, and Commercial use.

FEATURES

- Construction:** Die-cast seamless construction.
- Mounting:** Trimmed and trimless.
- Housing:** Non-IC
- Lens:** Clear.
- Finish:** Powder coated White and Black.
- Dimming:** Universal dimming 0-10V (120V/277V) and ELV, Triac (120V).
- Lumen Output:** 800lm (11 Watts)
- Color Temperature:** 2700K, 3000K, 3500K, 4000K
- Operating Temperature:** Ambient temperatures not to exceed 35°C. Installations exceeding this temperature will result in reduced LED lamp life and a voided warranty.
- CRI:** 90+
- Life:** L70 > 50,000 Hrs
- Warranty:** 5 years carefree for parts & components (Labor not included).
- Listing:** cETLus Listed, Title 24/JA8 Compliant, Wet Location, Assembled in USA.



ORDERING INFORMATION Example: (14122-R-DD-BK-20-27-WET)

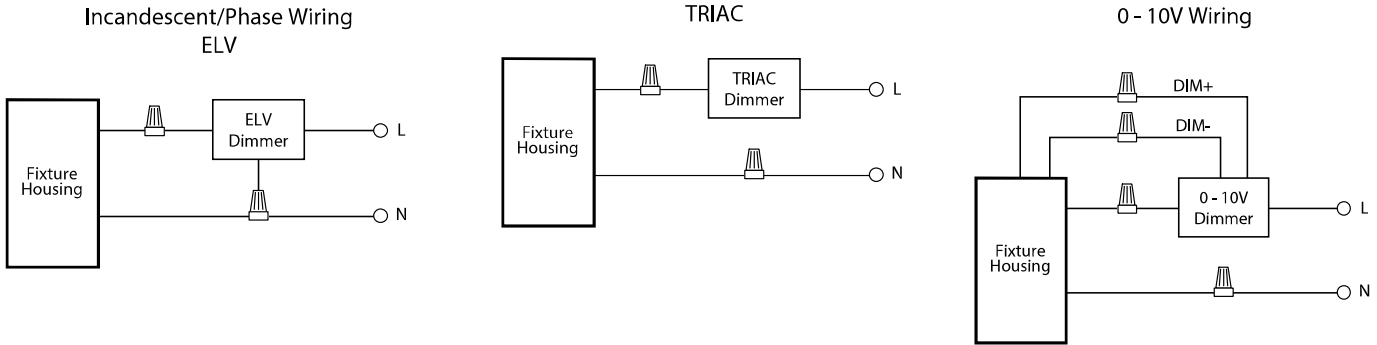
Model	Light Distribution	Finish	Optics ²	Color Temp	Options
14122-R Trimmed Round	DD Direct Downlight	BK Black	20 20° Beam	27 27000k	WET Airtight Lensed (Wet Location)
14122-S Trimmed Square	AD¹ Adjustable Downlight	WH White	40 40° Beam	30 3000k	EM External Emergency Battery
14122-R-TL Trimless Round	WW Wall wash		50 50° Beam	35 3500k	
14122-S-TL Trimless Square				40 4000k	

¹ Maximum ceiling thickness is 3/4".
² Not required for Wall Wash.

DRIVER SPECIFICATIONS

Universal Dimming:

All in one ELV and TRIAC phase dimming (120V only), and 0-10V dimming (120V/277V). Works with most 3-Wire ELV, 2-Wire incandescent and 120V/277V 5-Wire 0-10V fluorescent dimmers.



Integral Power Supply

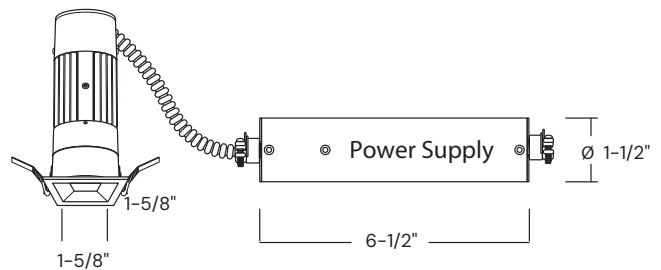
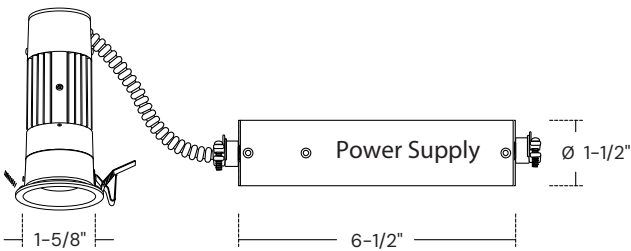
- 1 Integral power supply per fixture.
- Lightweight Aluminum.
- Slim Cylindrical Junction Box.
- 1/2" Conduit Fitting.

Round

- 14122-R-RTL
- 14122-R-RTL-WW
- 14122-R-R
- 14122-R-R-WW

Square

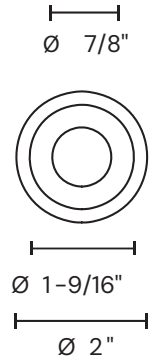
- 14122-S-RTL
- 14122-S-RTL-WW
- 14122-S-R
- 14122-S-R-WW



Trimmed

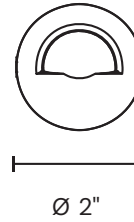
14122-R-R
14122-R-R-WW

Direct Downlight Adjustable Downlight



Cut out: 1 3/4" max

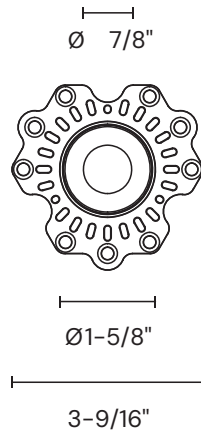
Wall wash



Trimless

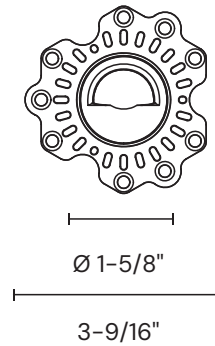
14122-R-RTL
14122-R-RTL-WW

Direct Downlight Adjustable Downlight

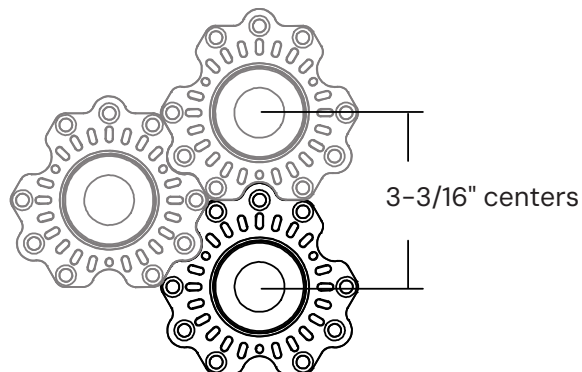


Cut out: 2 1/8" max

Wall wash



Mud in mounting flanges interlock with each other for perfect alignment when tight spacing is required.



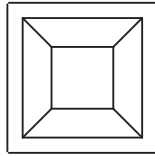
Trimmed

14122-S-R
14122-S-R-WW

**Direct Downlight
Adjustable Downlight**

Wall wash

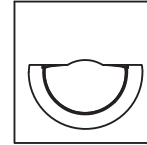
Ø 7/8"



Ø 1-9/16"

Ø 2"

Cut out: 1 3/4" max



Ø 2"

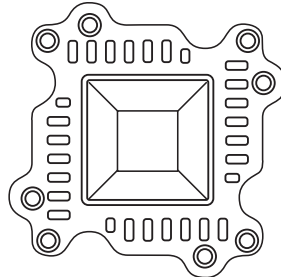
Trimless

14122-S-RTL
14122-S-RTL-WW

**Direct Downlight
Adjustable Downlight**

Wall wash

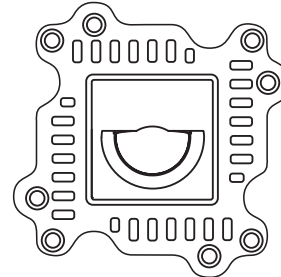
Ø 7/8"



Ø 1-5/8"

3-9/16"

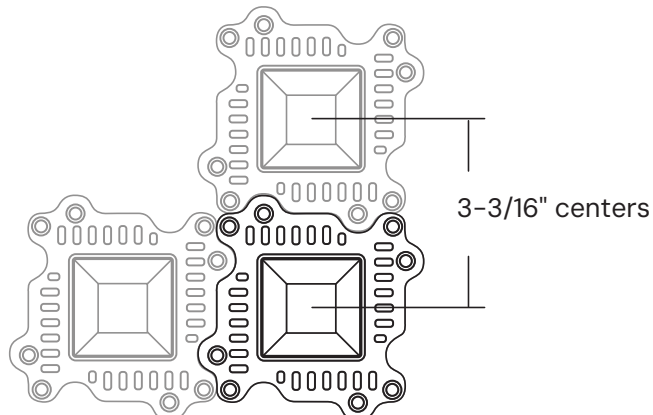
Cut out: 2 1/8" max



Ø 1-5/8"

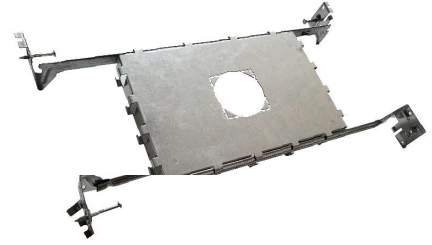
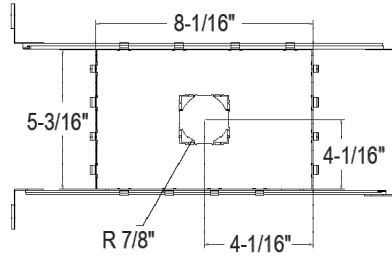
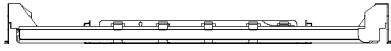
3-9/16"

Mud in mounting flanges interlock with each other for perfect alignment when tight spacing is required.

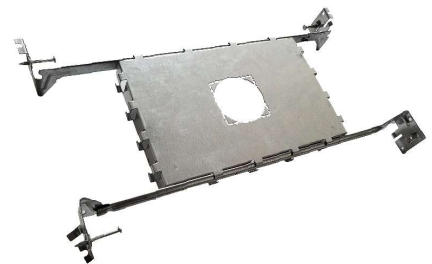
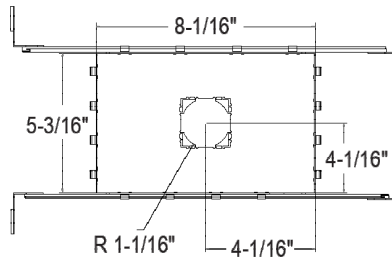
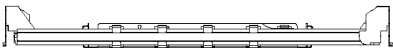


HOUSING

Non-IC Trimmed



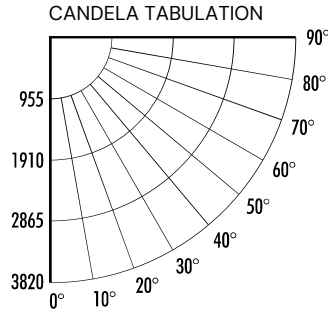
Non-IC Trimless



PHOTOMETRY

14122-DD-20-40 (800lm, 11W, 20°, 4000K)

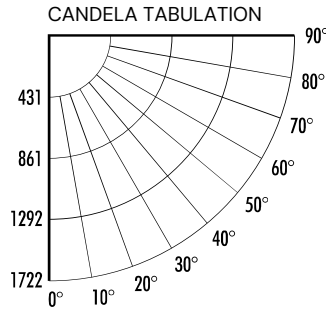
System Power:	12.53W	MULTIPLIERS	
Test Date:	08/2023	LUMEN OUTPUT	
Beam Angle 50%:	18.0°	500lm (CO25) :	0.60
Field Angle 10%:	35.9°	800lm (CO50) :	1.00
Color Temperature:	4064K	TRIM COLOR	
CRI:	94.1	White:	1.00
Lumens Delivered:	521	Black:	0.99
CBCP:	3819.50	LOUVER	
Power Factor:	0.99	With:	0.71
		Without:	1.00
		CCT	
		2700K :	0.87
		3000K :	0.99
		3500K :	1.01
		4000K :	1.00



FOOTCANDLE DISTRIBUTION		
Height	Beam Diameter	FC
10.0'	3.17'	38.20
15.0'	4.75'	16.98
20.0'	6.34'	9.55
25.0'	7.92'	6.11
30.0'	9.50'	4.24
35.0'	11.09'	3.12

14122-DD-40-40 (800lm, 11W, 40°, 4000K)

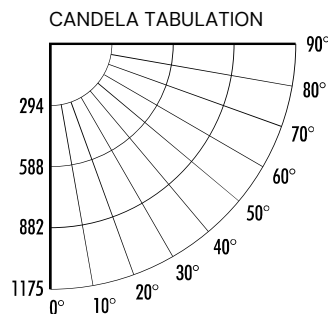
System Power:	12.51W	MULTIPLIERS	
Test Date:	08/2023	LUMEN OUTPUT	
Beam Angle 50%:	37.8°	500lm (CO25) :	0.60
Field Angle 10%:	61.4°	800lm (CO50) :	1.00
Color Temperature:	4054K	TRIM COLOR	
CRI:	94.7	White:	1.00
Lumens Delivered:	723	Black:	0.99
CBCP:	1720.39	LOUVER	
Power Factor:	0.99	With:	0.71
		Without:	1.00
		CCT	
		2700K :	0.87
		3000K :	0.99
		3500K :	1.01
		4000K :	1.00



FOOTCANDLE DISTRIBUTION		
Height	Beam Diameter	FC
10.0'	6.85'	17.19
12.0'	8.22'	11.94
15.0'	10.27'	7.64
20.0'	13.70'	4.30
25.0'	17.12'	2.75

14122-DD-50-40 (800lm, 11W, 50°, 4000K)

System Power:	12.62W	MULTIPLIERS	
Test Date:	08/2023	LUMEN OUTPUT	
Beam Angle 50%:	48.1°	500lm (CO25) :	0.60
Field Angle 10%:	73.4°	800lm (CO50) :	1.00
Color Temperature:	4025K	TRIM COLOR	
CRI:	95.1	White:	1.00
Lumens Delivered:	744	Black:	0.99
CBCP:	1175.47	LOUVER	
Power Factor:	0.99	With:	0.71
		Without:	1.00
		CCT	
		2700K :	0.87
		3000K :	0.99
		3500K :	1.01
		4000K :	1.00



FOOTCANDLE DISTRIBUTION		
Height	Beam Diameter	FC
10.0'	8.93'	11.75
12.0'	10.71'	8.16
15.0'	13.39'	5.22
20.0'	17.85'	2.94
24.0'	21.42'	2.04

COLOR TEMPERATURE GUIDE

2700K	3000K	3500K	4000K	5000K
WARM WHITE	SOFT WHITE GLOW	NEUTRAL GLOW	COOL WHITE GLOW	DAYLIGHT GLOW
friendly personal intimate	soft warm pleasing	sociable inviting non-threatening	neat clean efficient	bright cool alert
HOMES LIBRARIES RESTAURANTS	HOMES HOTEL ROOMS LOBBIES RETAIL STORES	EXECUTIVE OFFICES RECEPTION AREAS SUPERMARKETS	OFFICES CLASSROOMS MASS MERCHANDISERS SHOWROOMS	GRAPHICS INDUSTRY HOSPITALS GALLERIES BEAUTY SALONS
✓	✓	✓	✓	✗