

Project Name: \_\_\_\_\_ Type: \_\_\_\_\_ Quantity: \_\_\_\_\_

### INTENDED USE

The Lumino Commercial LED Recessed Direct Down Light is designed to maximize heat rejection in an open air environment. The Lumino is designed for new construction installations for medium to high ceilings in commercial, institutional, and architectural spaces.

### DETAILS

W 7.75" x L 12.25" x Dia 7.5"

**Construction:** Integral cast-aluminum, heat sink design Non-IC rated housing must be kept 3" from insulation

**Mounting:** Suitable for New Construction Installations Only (2) 24" Adjustable Hanger Bar w/ 90° Repositioning Included  
Earthquake Structural Cable Compatible

**Junction Box:** 16 gauge pre-wired galvanized steel 64 cubic-inch for maximum (8) #12 AWG wires Equipped with safety standard die-cast aluminum fitting for flex-conduit

**Reflector:** Airtight to restrict airflow from room into plenums in compliance to the WSEC (Washington State Energy Code)

### ADDITIONAL FEATURES

**Voltage:** 120/277 50/60 Hz

**Dimming:** 5-Wire 0-10V Dimming

**CRI:** 90

**Operating Temperature:** 14°F (-10°C) - 176°F (80°C) **Life:** 50,000 Hours

**Power Factor:** > .90

**Listings:** ETL/cETL listed to UL1598 and UL8750. Suitable for dry, damp, and wet locations.

Meets CA Title 24 Requirements and other standards restricting the use of Medium Base or Bi-Pin Sockets.

**Caution:** Use of surge protectors recommended on the power entering LED Housings.

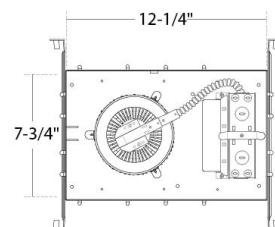
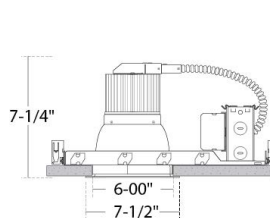
Surge damage is not covered by warranty. (+1KV)

**Remote Emergency Option:** 90 minute emergency mode when AC power fails

Plate cover, and junction box included.

Remote test switch only available with 12W EM option.

**Generator Transfer Device Option:** Switches the driver to auxiliary generator power during loss of normal AC power (Recommended for applications requiring individual circuit switching)



CEILING CUT-OUT: 6-3/8"  
CEILING THICKNESS: 1" MAX



### ORDERING INFORMATION Example: (14086-6-27W-30K-WH-D10)

Model	Wattage & Lumens		Color Temp		Reflector Finish		Housing	Driver	Options	
14086-6	8W	8W   1000 lms	27K	2700K	HZ	Haze	Non-IC Non-IC Rated	D10 0-10V Dimming	EM12	12 Watt Emergency Battery
	17W	17W   1800 lms	30K	3000K		Reflector/ White Ring				
	22W	22W   2200 lms	35K	3500K						
	39W <sup>1</sup>	39W   3600 lms	40K	4000K	WH	White	ICA ICA Rated	UNI Universal Dimming (0-10V, ELV and TRIAC)	EM25	25 Watt Emergency Battery
	48W	48W   4200 lms				Reflector/ White Ring				
	55W <sup>12</sup>	55W   4400 lms								
	50W	50W   5300 lms								
									GTD	Generator Transfer Device

<sup>1</sup> Not available in 27K

<sup>2</sup> Only available with D10 driver