

## FEATURES & SPECIFICATIONS

### INTENDED USE

The **Hal Super Shallow Square Architectural LED Direct Downlight Luminaire** is a high efficacy solid seamless fixture ideal for low to medium height ceilings and very shallow plenum installations, the Hal fixtures can be installed individually or in group patterns bringing clear light to commercial LED or residential lighting interiors.

### DETAILS

**W** 7.75" x **L** 12.25" x **H** 3.125

**Construction:** Integral cast-aluminum, finned heat sink design

**Housing:** Pre-wired adjusts up to 1/2"-1 3/4" ceiling thickness

**Mounting:** Housing suitable for new construction installations only, supplied with (2) 24" adjustable hangar bars with 90° repositioning ability. Hangar bars equipped with nail-less install 3/4" serrated barbed studs and with captive nails.

**Trim:** One Piece Poly-carbonate non-conductive "Dead Front" construction. Available in Baffle or Reflector

**Junction Box:** 16 gauge pre-wired galvanized steel, 25 cubic-inch for a maximum of (8) #12 AWG wires

### ADDITIONAL FEATURES

**Voltage:** 120VAC

**Wattage:** 15W

**Lumens:** 1100 lms

**Dimming:** 100%-10%

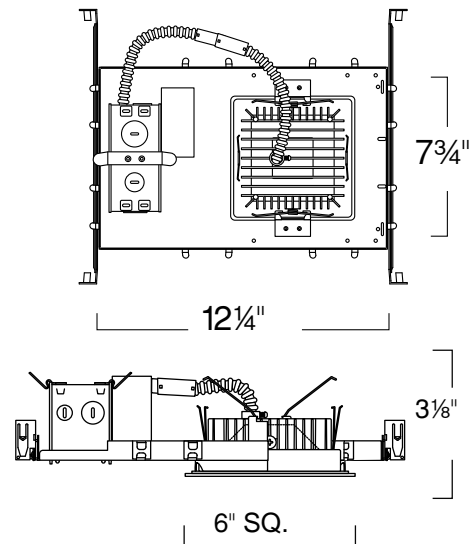
**Color Temperature:** 3000K

**CRI:** 90+

**Life:** L70 - 50,000 hours

**Emergency:** 90 minutes

**Lamp Equivalent:** 26W/32W CFL



Reflector Trim



Baffle Trim

### Ordering Information:

Example: (14077-2W-WH-EM)

Model	Trim	Dimming	Finish	Option
<b>14077</b> 5" Square	<b>RT</b> Reflector	<b>2W</b> Incandescent Dimming (Standard)	<b>WH</b> White	<b>EM</b> Remote Emergency Backup Battery
	<b>BT</b> Baffle	<b>ND</b> Non-Dimming (120V/277V)	<b>BK</b> Black	
		<b>5W</b> 0-10V Dimming (120V/277V)	<b>SH</b> Satin Haze	