

Project Name:

Type:

Quantity:

**FIXTURE SPECIFICATIONS**

**INTENDED USE**

Our 14031-2 architectural 3-inch square LED open-reflector recessed light is designed for new construction installation only. The energy-efficient LED housing with IC rating for direct contact with loosefill blown and rolled insulation is standard. Airtight option is designed to restrict air flow from room into plenums in compliance to the WSEC - Washington State Energy Code, (less than 2.0 CFM-cubic feet per minute).

**FEATURES**

**Adjustability:** Collar bracket provides 90° of rotation, in 5° increments for positioning before drywall installation

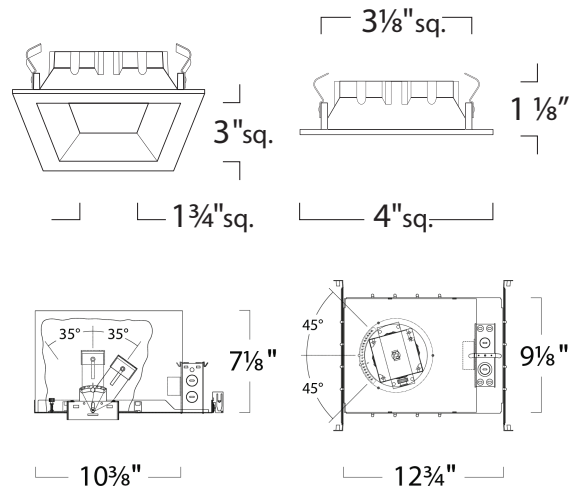
**Mounting:** (2) 24" adjustable hanger bars with 90° repositioning ability supplied. Lamp holder assembly allows 35° tilt and 1-1/2" vertical lamp source adjustment

**Driver:** Electronic direct current LED driver integrally mounted in electric junction box

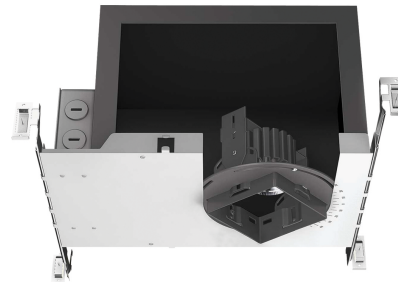
**Dimming:** Non-dimming is standard. 120/277V universal dimming that works with most 3-wire ELV, 2-wire Incandescent and 5-wire 0-10V dimmers is available

**CRI:** 80 standard; 90+ CRI option

**Listings:** cETLus, Title 24/JA8, Damp-location, Assembled in the US



3" Square LED Housing



Alcon 14031-2 Architectural 3" Square LED Open Reflector Recessed Light Fixture

**Ordering Information:** Example: (14031-2-12-30K)

Model	Wattage/Lumens	Color Temperature	Beam Spread	Additional Options
<b>14031-2</b>	<b>12</b> 12 watts /600lumens	<b>30K</b> 3000K <small>Standard</small>	<b>45</b> 45° Narrow Flood <small>Standard</small>	<b>WL</b> Wet Location <b>EM</b> Emergency Remote (5W; Above ceiling access required)
	<b>19<sup>1</sup></b> 19 watts /1200lumens	<b>27K</b> 2700K	<b>25</b> 25° Spot	
		<b>35K</b> 3500K	<b>60</b> 60° Wide Flood	
		<b>40K</b> 4000K		
		<b>27K-C90</b> 2700K 90+ CRI		

<sup>1</sup> Not rated for Insulation Contact