

Project Name:

Type:

Quantity:

FIXTURE SPECIFICATIONS

INTENDED USE

Our linear T-bar quick-connect LED lights gently rest flush on the ceiling's surface, easily clipping on the cross tees or beams of commercial ceiling grids. Create any layout configuration with our LED t-bar lights, ideal for the office, conference room, lobby, corridor and healthcare as well as retail space. It can be mounted on to Armstrong ceilings.

FEATURES

Construction: 1" & 2" extruded aluminum profile, white PVC snap-in lens

Voltage: 120-277V

Mounting: universal mounting to acoustic 9/16", 15/16" T-grid & screw-slot grid systems with standard spring metal clips. Continuous row mounting is possible to create longer fixtures, with a fixture and lens seam slightly visible.

Dimming: 0-10V remote driver is standard. MLV remote driver is available.

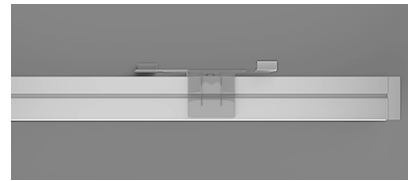
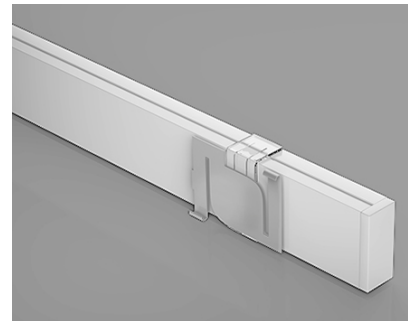
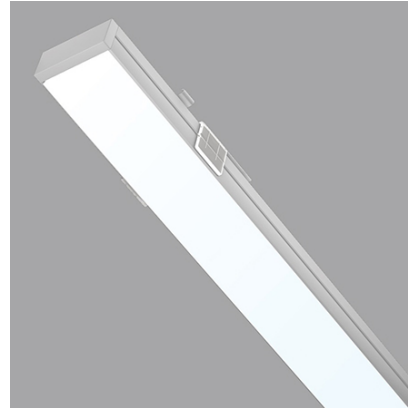
Remote Power Supply: Surface mount with multiple knockouts & removable access plate for maintenance. Pre-wired in/out wiring terminals. 75' or less distance to luminaire with 16 AWG wire is recommended

Lumen Output: 3 LED packages from 227 lm/ft to 1300 lm/ft

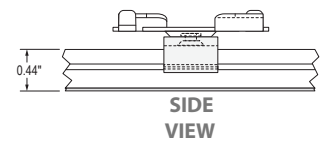
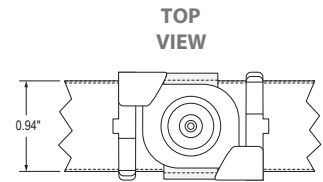
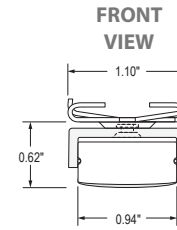
CRI: 80

Warranty: 5 years carefree for parts & components (labor not included)

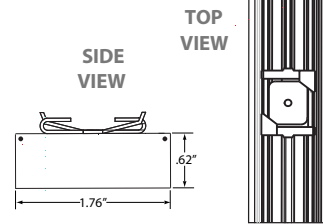
Listing: cETLus suitable for dry or damp locations, Assembled in the US



14030-1 (one-inch)



14030-2 (two-inch)



ORDERING INFORMATION Example: (14030-10-4-9W-40K-WH-9T-010-EM)

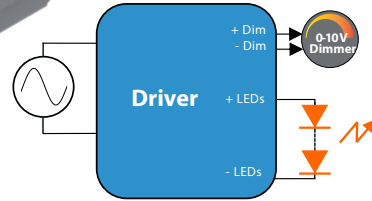
Model	Length	Lumens/Ft	Color Temp	Finish	Mounting	Remote Driver	Options
14030-10 One-Inch	2 2 foot	4W 227 lm	30K 3000K	WH White	9T 9/16" T-Bar	010 0-10V (120/277V)	EM Emergency Backup Battery
	4 4 foot	9W 624 lm	35K 3500K	BK Black	15T 15/16" T-Bar		
	8 8 foot	12W 833 lm	40K 4000K		SS Screw Slot		
	CRx Custom (Continuous Row)					MLV Magnetic 24V (120V/277V)	
14030-20 Two-Inch	2 2 foot	8W 448 lm					
	4 4 foot	18W 973 lm					
	8 8 foot	24W 1298 lm					
	CRx Custom (Continuous Row)						

DRIVER SPECIFICATIONS

Nominal Input Voltage	Max. Output Power	Nominal Output Voltage	Max. Output Current	Efficiency	Max. Case Temperature	THD	Power Factor	Dimming Method	Dimming Range	Startup Time
120 & 277 Vac	90 W	24, 48 Vdc	3.75, 1.9 A	up to 90% typical	90°C (measured at the hot spot)	< 20%	> 0.9	0-10V	1-100%	300 ms typical

Models with Flying Leads, Aluminum Case

L 150.2 x W 38.8 x H 24.9 mm (L 5.91 x W 1.53 x H 0.98 in)

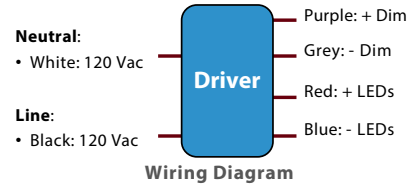


FEATURES

- Class 2 power supply
- UL Class P
- Ripple \leq 5% @ 20% & 100% load
- Constant voltage mode with over-current protection
- IP20-rated case with silicone-based potting
- 90°C maximum case hot spot temperature
- Lifetime: 5 years min at 85°C case temperature
- EMI: Compliant with FCC CFR Title 47 Part 15 Class B at 120 Vac & Class A at 277 Vac • Surge protection:
 - IEC61000-4-5: 2 kV line to line/2 kV line to earth
 - 2.5 kV ring wave: ANSI/IEEE c62.41.1-2002 & c62.41.2-2002 category A
- Complies with ENERGY STAR®, DLC (DesignLight Consortium®) and CA Title 24 technical requirements

NFC PROGRAMMING

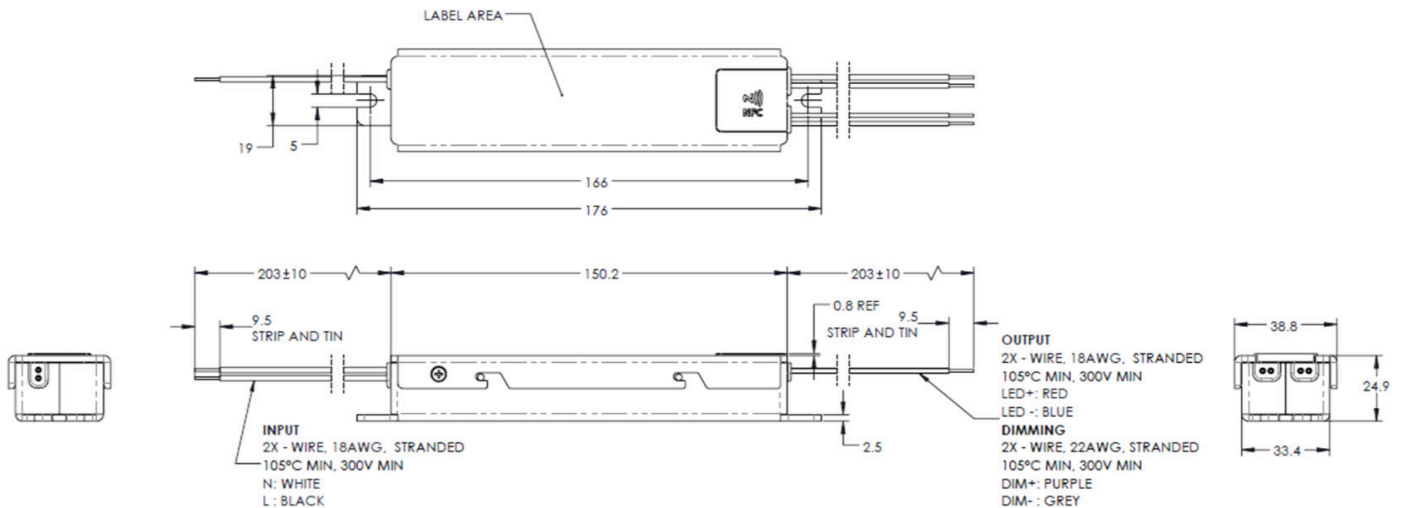
- Programmable output voltage for optimal dimming range • Fully programmable 0-10 V dimming profile with dim-to-off



OUTLINE DRAWINGS

Dimensions: L 150.2 x W 38.8 x H 24.9 mm (L 5.91 x W 1.53 x H 0.98 in)

Volume: 145.1 cm³ (8.86 in³)



COLOR TEMPERATURE GUIDE



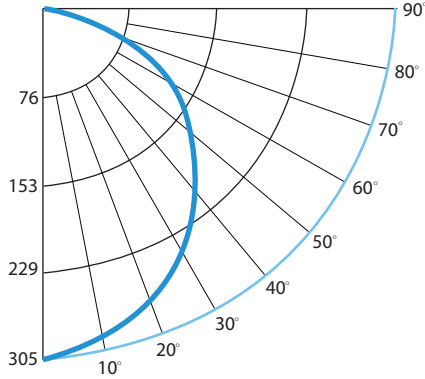
2700K	3000K	3500K	4000K	5000K
WARM WHITE	SOFT WHITE GLOW	NEUTRAL GLOW	DAYLIGHT GLOW	CRYSTAL WHITE GLOW
friendly personal intimate	soft warm pleasing	sociable inviting non-threatening	neat clean efficient	bright cool alert
HOMES LIBRARIES RESTAURANTS	HOMES HOTEL ROOMS LOBBIES RETAIL STORES	EXECUTIVE OFFICES RECEPTION AREAS SUPERMARKETS	OFFICES CLASSROOMS MASS MERCHANDISERS SHOWROOMS	GRAPHICS INDUSTRY HOSPITALS GALLERIES BEAUTY SALONS
✗	✓	✓	✓	✗

14030-1 • 1" Profile

OUTPUT PERFORMANCE

IES INDOOR REPORT
12W-35K-UD.IES

TOTAL RATED LAMP LUMENS 833
CCT: 3500K/12W



Performance

LUMINANCE DATA (cd/sq.m)

Angle In Degrees	Average 0-Deg	Average 45-Deg	Average 90-Deg
45	57798	47183	44218
55	54772	41400	37932
65	51089	34419	30591
75	46008	24933	20973
85	36629	10788	8123

ZONAL LUMEN SUMMARY

Zone	Lumens
0-10	28.85
10-20	81.97
20-30	122.33
30-40	144.58
40-50	147.15
50-60	131.29
60-70	100.33
70-80	59.01
80-90	17.62
90-100	.63
100-110	.02
110-120	.02
120-130	.02
130-140	.02
140-150	.01
150-160	.01
160-170	.01
170-180	0

COEFFICIENTS OF UTILIZATION - ZONAL CAVITY METHOD

EFFECTIVE FLOOR CAVITY REFLECTANCE: 0.20

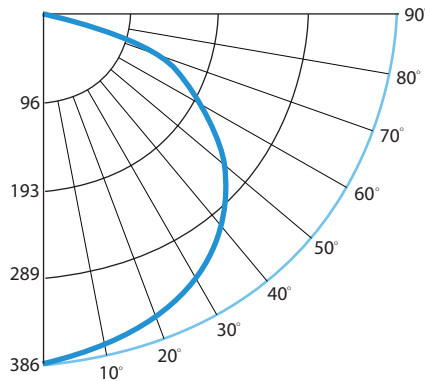
RC RW	80				70				50				30			10			0
	70	50	30	10	70	50	30	10	50	30	10	50	30	10	50	30	10	0	
0	119	119	119	119	116	116	116	116	111	111	111	106	106	106	102	102	102	100	
1	109	104	100	96	106	102	98	94	97	94	91	93	91	88	90	88	86	84	
2	99	91	84	78	96	89	82	77	85	80	75	82	77	73	79	75	72	70	
3	90	80	71	65	88	78	70	64	75	68	63	72	67	62	70	65	61	59	
4	83	71	62	55	80	69	61	55	67	59	54	64	58	53	62	57	52	50	
5	76	63	54	47	74	62	53	47	60	52	47	58	51	46	56	50	46	43	
6	70	57	48	41	68	56	47	41	54	46	41	52	46	40	51	45	40	38	
7	65	52	43	37	63	51	42	36	49	42	36	48	41	36	46	40	36	34	
8	61	47	39	33	59	46	38	33	45	38	32	44	37	32	43	36	32	30	
9	57	43	35	29	55	43	35	29	41	34	29	40	34	29	39	33	29	27	
10	53	40	32	27	52	39	32	27	38	31	27	37	31	26	37	31	26	25	

14030-2 • 2" Profile

OUTPUT PERFORMANCE

IES INDOOR REPORT
24W-35K-UD.IES

TOTAL RATED LAMP LUMENS 1295
CCT: 3500K/24W



Performance

LUMINANCE DATA (cd/sq.m)

Angle In Degrees	Average 0-Deg	Average 45-Deg	Average 90-Deg
45	84214	68636	64218
55	83960	63543	58293
65	83122	56217	50159
75	81095	44736	38319
85	96326	30048	24029

ZONAL LUMEN SUMMARY

Zone	Lumens
0 - 10	36.56
10 - 20	105.47
20 - 30	162.14
30 - 40	199.91
40 - 50	213.73
50 - 60	201.53
60 - 70	164.25
70 - 80	107.79
80 - 90	51.18
90 - 100	19.84
100 - 110	11.86

COEFFICIENTS OF UTILIZATION - ZONAL CAVITY METHOD

EFFECTIVE FLOOR CAVITY REFLECTANCE: 0.20

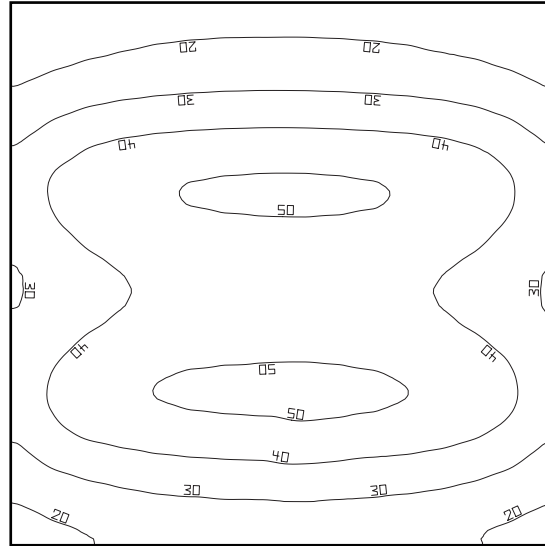
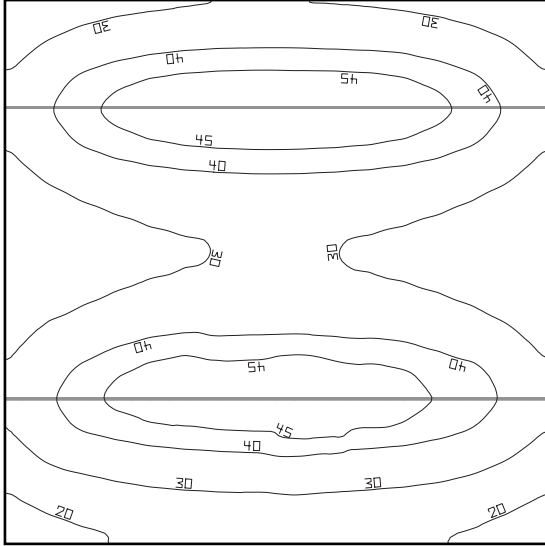
RC RW	80				70				50				30			10			0
	70	50	30	10	70	50	30	10	50	30	10	50	30	10	50	30	10	0	
0	118	118	118	118	115	115	115	115	109	109	109	103	103	103	98	98	98	96	
1	107	101	97	92	103	99	94	90	94	90	87	89	86	83	85	82	80	78	
2	96	88	80	74	93	85	79	73	81	75	70	77	72	68	73	70	66	64	
3	88	76	68	61	85	74	66	60	71	64	58	67	62	57	64	59	55	53	
4	80	67	58	51	77	66	57	51	63	55	49	60	53	48	57	52	47	45	
5	73	60	51	44	71	59	50	43	56	48	42	53	47	42	51	45	41	38	
6	68	54	45	38	65	53	44	38	50	43	37	48	41	36	46	40	36	33	
7	63	49	40	33	61	48	39	33	46	38	32	44	37	32	42	36	31	29	
8	58	44	36	30	56	43	35	29	42	34	29	40	33	28	39	33	28	26	
9	54	41	32	26	53	40	32	26	38	31	26	37	30	26	36	30	25	23	
10	51	37	29	24	49	37	29	24	35	28	23	34	28	23	33	27	23	21	

14030-1 OFFICE APPLICATION:

- 30' (L) x 30' (W) x 10' (H) 900sf.
- LUMINAIRE: 2x 30'-12W-35K-010
2x 30' LED System

PERFORMANCE:

12.3W/Ft., 833Lm/Ft. 69.4 Lm/W
 Total Load/Lumens: 738W / 51,217Lm
 Power Density: 0.82 W/sq ft = 0.21W/sq ft/10 fc
 Layout: 12' & 16' Luminaire on center spacing



Reflection factors: Ceiling 80.0%, Walls 50.0%, Floor 20.0%, Light loss factor: 0.90

Surface	Average	Min	Max
Workplane Height: 2.5 ft. with 16' Spacing on Center	35.02	15.43	51.31

Reflection factors: Ceiling 80.0%, Walls 50.0%, Floor 20.0%, Light loss factor: 0.90

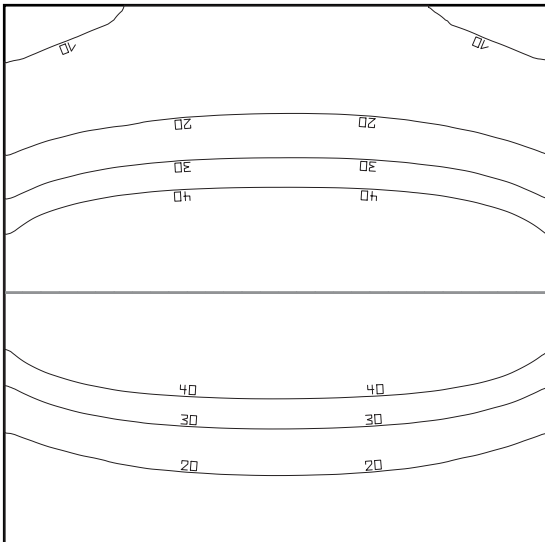
Surface	Average	Min	Max
Workplane Height: 2.5 ft. with 12' Spacing on Center	36.07	12.15	52.34

14030-2 OFFICE APPLICATION:

- 30' (L) x 30' (W) x 10' (H) 900s f.
- LUMINAIRE: 1x 30'-24W-35K-010
1x 30' LED System

PERFORMANCE:

24.6W/Ft. , 1298Lm/Ft .56.2 Lm/W
 Power Density:0.82 W/sq ft = 0.23 W/sq ft/1 fc



Height of room: 10 ft, Reflection factors: Ceiling 80.0%, Walls 50.0% , Floor 20.0%, Light loss factor: 0.90

Surface	Average	Min	Max
Workplane Height : 2.5 ft.	33.74	8.0	77.01