

**FIXTURE SPECIFICATIONS**
**INTENDED USE**

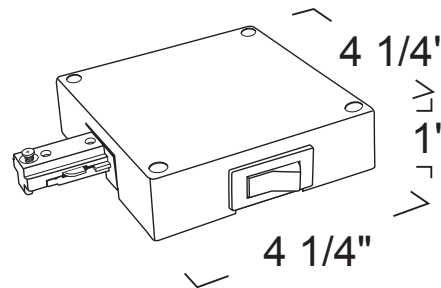
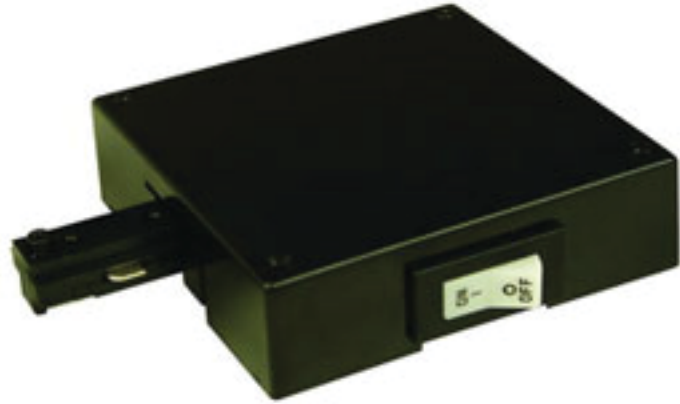
Limits current to track to save energy and meet new stringent energy codes.

**SIZE**

W 4 1/4" x H 4 1/4"

**FEATURES**

- Electrical feed mounts directly to surface for through ceiling wiring. Cover plate and feed mounts directly to 4 inch octagonal electrical box (not included).
- Track limited housing constructed of injection molded polycarbonate. Black plate constructed of galvanized steel.
- Multiple configurations available in Live End Feed, In Line Feed and L-Shape Feed
- 1 Circuit
- 120VAC
- ASHRAE/IESNA 90.1
- For CEC version use -CEC as Suffix



13991, 13992, 13993 - Track Limiter - 1 Circuit

**ORDERING INFORMATION:** Example: (13991-12-B)

| Model                      | Wattage               | Finish                                  |
|----------------------------|-----------------------|---|
| <b>13991</b> Live End Feed | <b>12</b> 120W/1A-    | <b>W</b> All White                      |
| <b>13992</b> In Line Feed  | <b>30</b> 300W/2.5A+  | <b>B</b> Black casing with White Switch |
| <b>13993</b> L-Shape Feed  | <b>60</b> 600W/5A+    |   |
|                            | <b>90</b> 900W/7.5A-  |   |
|                            | <b>108</b> 1080W/9A-  |   |
|                            | <b>120</b> 1200W/10A- |   |
|                            | <b>144</b> 1440W/12A- |   |
|                            | <b>168</b> 1680W/14A- |   |

