

Project Name:

Type:

Quantity:

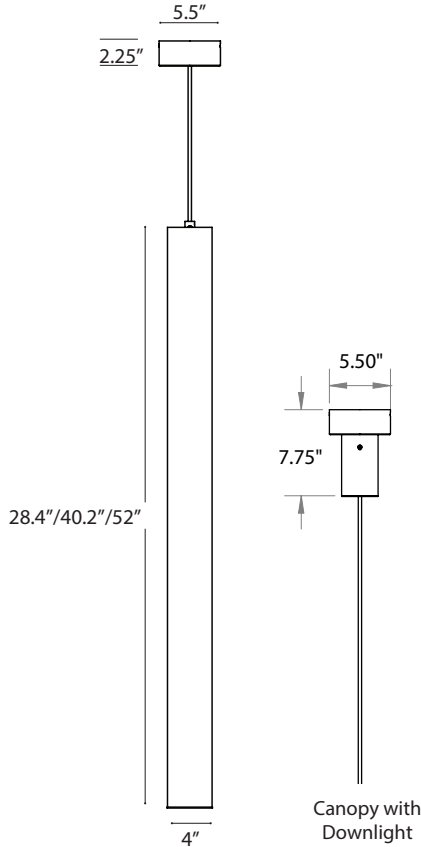
FIXTURE SPECIFICATIONS

INTENDED USE

The **Vivo Architectural LED Vertical Cylinder Tube Pendant Mount** features an aesthetically pleasing design and RGB color changing options that will enhance any space with a touch of color. The Vivo is an ideal solution for architectural and commercial applications.

FEATURES

- Diameter:** 4"
- Lens:** Matte white acrylic diffuser
- Mount:** 8' adjustable power cord
- Voltage:** 24V
- CRI:** 90
- LED Color:** RGB sequencer
- RGB Flexible 5050 tapelights
- Eldo LED Dimmer with Control Included
- 4-Conductor control cable to fixture canopy supplied
- Dimming:** 0-10V 1% dimming, 120/277V standard
- Downlight:** 4" 12V DC MR16 LED
- Downlight Wattage:** 9W
- Listings:** cULus Listed for dry locations only



Alcon 12255 Vivo Architectural LED Vertical Cylinder Tube Commercial Pendant Light Fixture



ORDERING INFORMATION Example: (12255-2-36W-30K-SL)

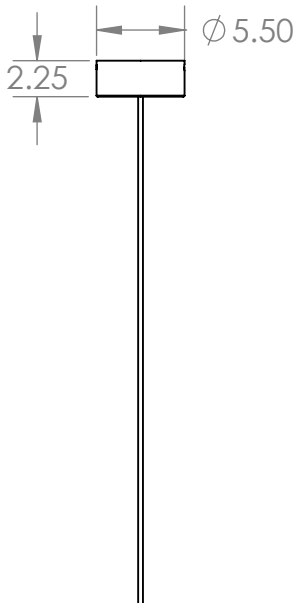
Model	Size, Wattage, & Lumens	Color Temp	Finish	Dimming	Controls
12255	2-36W 2 FT / 36W / 2100 lms	30K 3000K	SL Silver	010 ^{Std} 0-10V 1%	DTRAX Wall-mounted White DMX Controller
	3-54W 3 FT / 54W / 3100 lms	35K 3500K	WH White	LIN Eldo 4-control channel Dimmable Driver	
	4-72W 4 FT / 72W / 4200 lms	40K 4000K			
		R Red			
		B Blue			
		RGB ¹ RGB			

¹ Must specify LIN full color dimmable LED driver

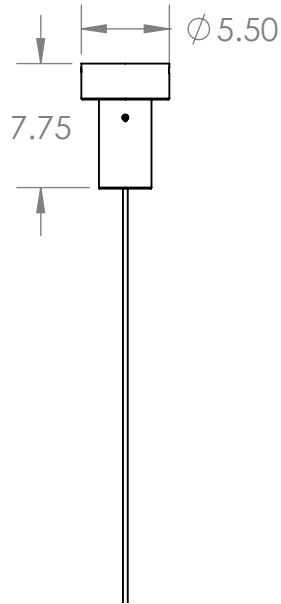
LED CANOPY DIMENSIONS

PENDANT STANDARD

No Downlight

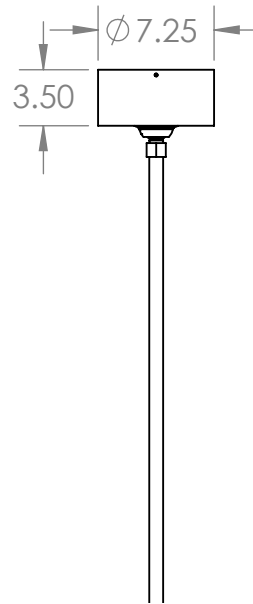


With Downlight



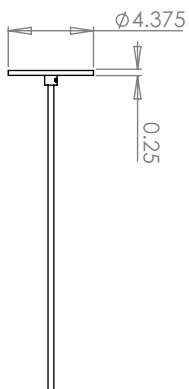
PIPE MOUNT WITH SWIVEL CANOPY

With or Without Downlight

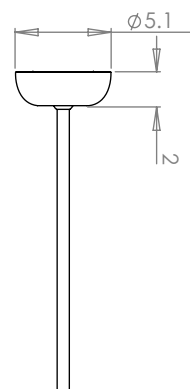


REMOTE DRIVE OPTION - RD & BDMXMOD

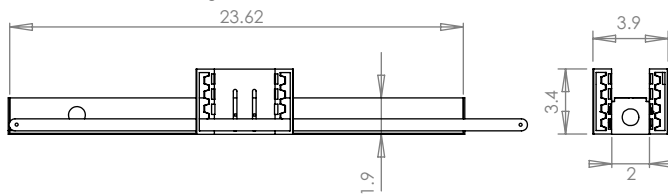
Pendant



Pipe Mount



Remote Driver Housing



Adjustable bar hanger brackets are removable.