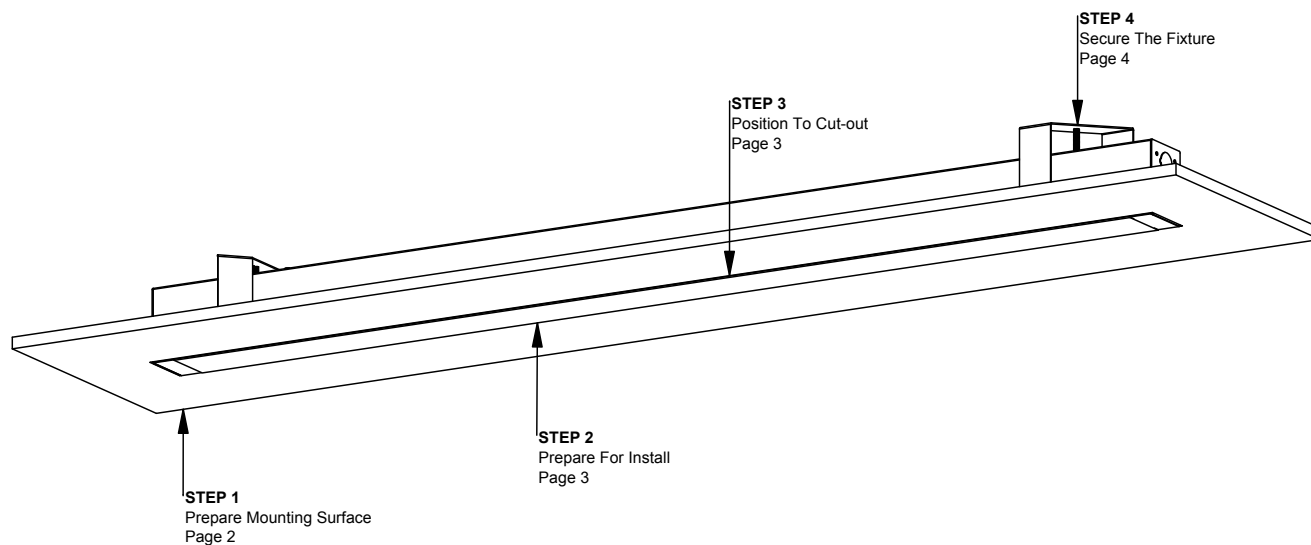


## INSTALLATION INSTRUCTIONS

This product must be installed in accordance with all applicable codes by a person familiar with the product.

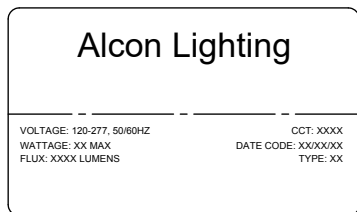
Each fixture must be **properly supported** during install.

**DO NOT** join fixtures on the floor prior to lifting, or damage will occur.



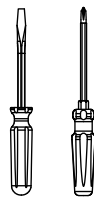
## PREPARATION

### A. Identify Fixtures

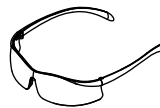


- Use labels found on the box and inside fixture bodies to identify bodies.
- **NOTE:** Locations of labels can vary.
- Remove all fixtures from their boxes.
- Organize fixtures based on their labels at the install location.

### B. Tools Needed



Screwdrivers



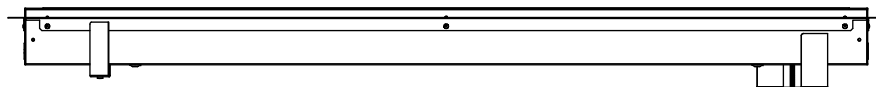
Safety Glasses



Utility Knife

- Always use proper safety equipment when installing fixtures.
- Tools shown are recommended for standard install. Tools needed may vary based on actual install location conditions.

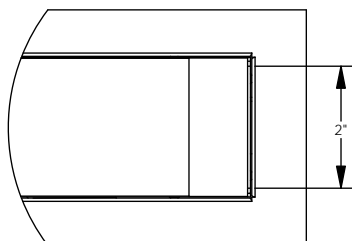
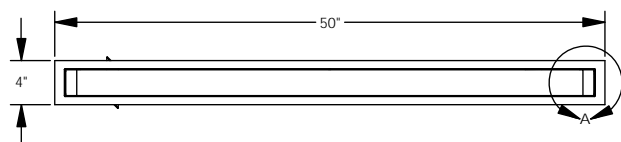
### C. Identify Parts



12200-2-R  
(Provided)

## STEP 1

### A. Transfer Measurements

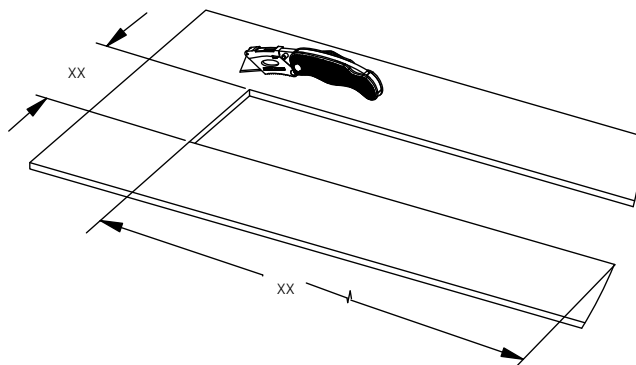


DETAIL A  
SCALE 1 : 1.5

Note: 4FT fixture shown,  
fixture length may vary.

- Note the length and width dimensions of the fixture, including the pre-installed flange.
- Transfer the dimensions to the grid. Set the grid rails to the proper width.

### B. Make Cut-Out



- Using a utility knife or similar, cut out an opening for the fixture in the mounting surface.
- **Note:** Keep the cut out size as small and tight to the fixture as possible.

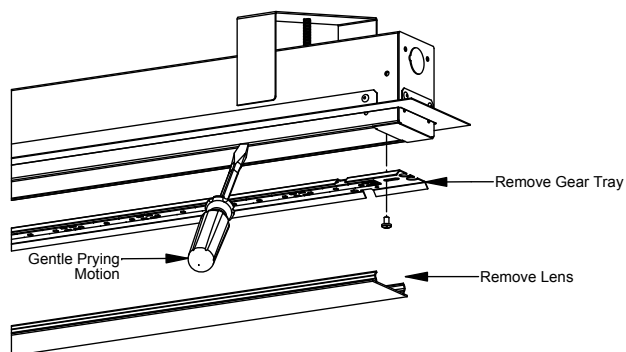
### Items Used In This Step



Utility Knife

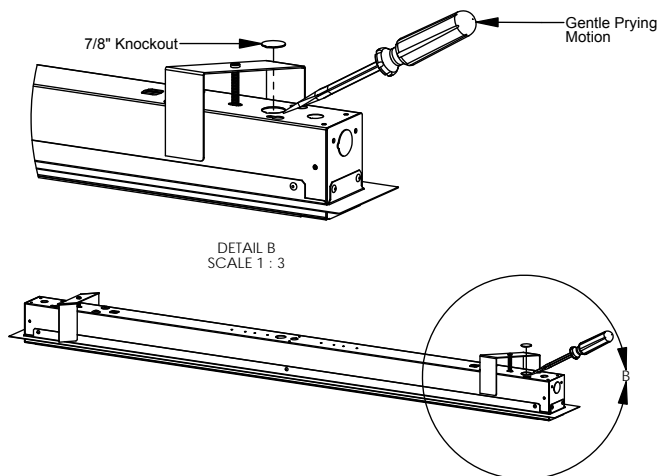
## STEP 2

### A. Open The Fixture



- Carefully insert a flat-head screwdriver, and use a gentle prying motion to remove lens.
- Remove the gear tray as shown. Set the lens and gear tray aside in a safe location.

### B. Remove 7/8" Knockout



- Using a gentle, prying motion, remove the 7/8" knockout from the desired location.

### Items Used In This Step

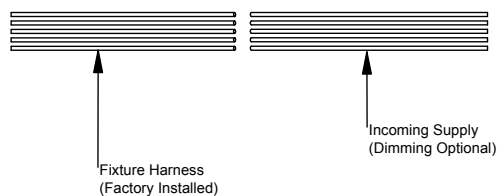


Flat Tip Screwdriver

## STEP 3

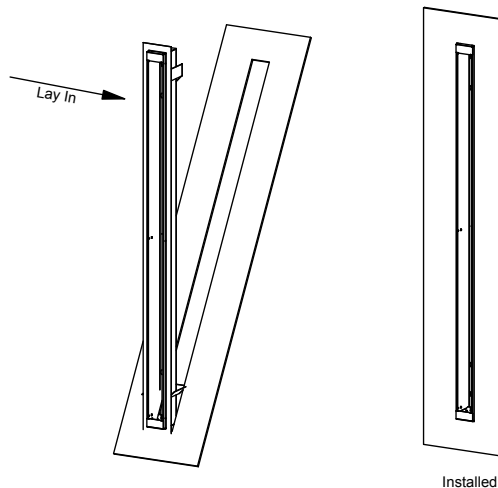
### A. Connect Power Cord

WIRING LEGEND		
Black	Hot	Line Voltage
White	Neutral	Line Voltage
Green	Ground	
Gray	Dimming	0-10V DC
Violet	Dimming	0-10V DC



- Wire the fixture to the incoming supply. Refer to the wiring legend above as needed.
- **Note:** Use UL approved connectors only. Follow all local, state and national codes.

### B. Position Fixture In Cut-Out



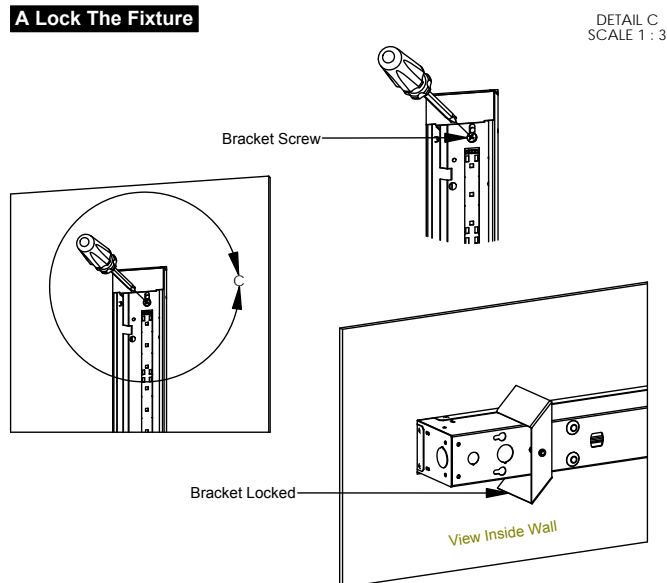
- **Note:** Make sure the install brackets are turned against the fixture before installing.
- Position one end of the fixture in to the opening as shown above.
- Gently rotate the fixture in to the opening as shown. The flange will be inside the drywall.

### Items Used In This Step

(No Special Items Used)

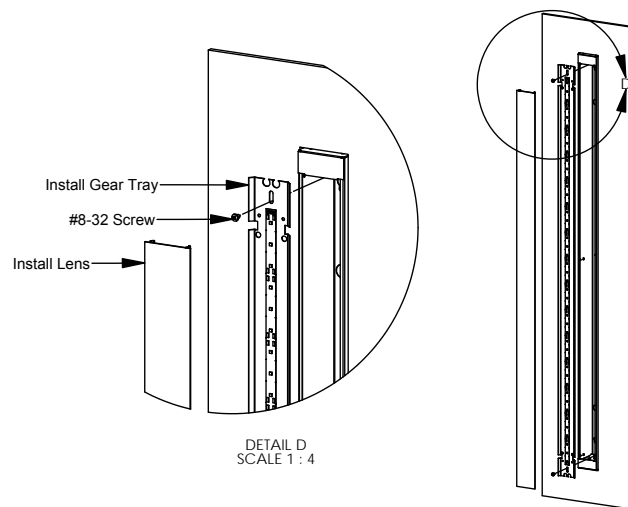
## STEP 4

### A Lock The Fixture



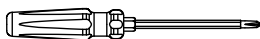
- Using a phillips screwdriver, turn each install bracket screw counter clockwise as far as possible.
- The brackets will rotate inside the wall, locking the fixture to the mounting surface.

### B. Install Internal Components



- Reinstall gear tray and secure with (2) #8-32 screws removed in step 4. Reinstall lens.
- Install is now complete.

### Items Used In This Step



Phillips Screwdriver