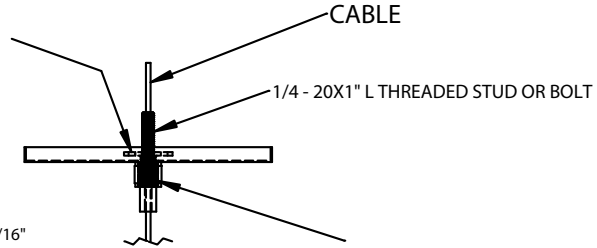


HANGING KIT INSTALLATION INSTRUCTIONS

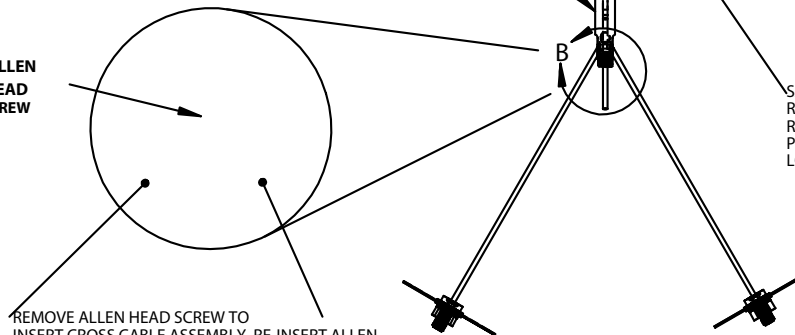
1/4" -20 COUNTERSUNK GEM BAR
WITH GROUND SCREW INSERTED 3 7/8" L x
3/4" W ZINC PLATED x 16 GAUGE



SIDE EXIT GRIPPER W/ SAFETY NUT FOR 1/16"
CABLE 1/4"-20 FEMALE ON BOTTOM .250"
MOUNTING HOLE 1.653" H x .39" W x .235"
THREAD DEPTH

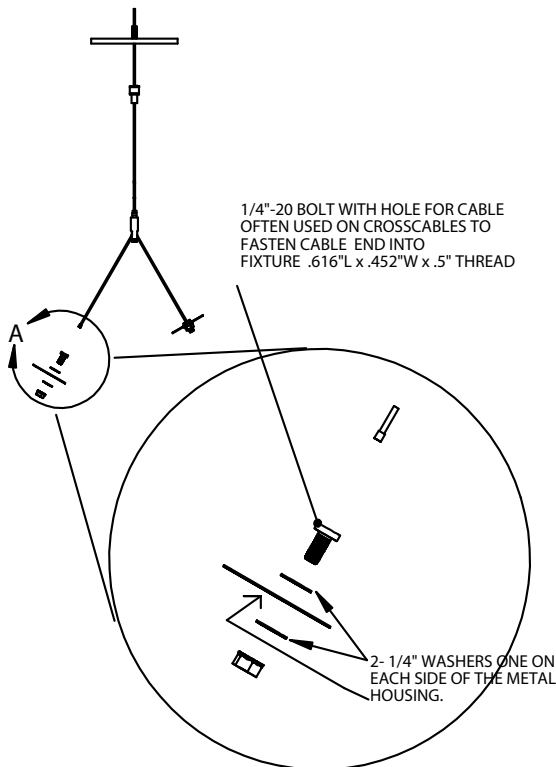
2-PIECE CABLE COUPLER
THREADED 1/4"-20 FEMALE 1" H
x .491" W x 1/2" OF
1/8" IP THREADED ON OD FOR
COUPLER TO RETAIN CANOPY

ALLEN
HEAD
SCREW



SAFETY NUT- LOOSEN AND PRESS DOWN TO
RELEASE GRIP ON CABLE. WHEN SAFETY NUT IS
RELEASED CABLE ADJUSTMENT WILL STOP. WHEN
PROPER HEIGHT IS ATTAINED TIGHTEN NUT TO
LOCK CABLE IN PLACE.

REMOVE ALLEN HEAD SCREW TO
INSERT CROSS CABLE ASSEMBLY. RE-INSERT ALLEN
HEAD SCREW THEN TIGHTEN TO SECURE THE CROSS
CABLE.



1/4"-20 BOLT WITH HOLE FOR CABLE
OFTEN USED ON CROSSCABLES TO
FASTEN CABLE END INTO
FIXTURE .616" L x .452" W x .5" THREAD

2- 1/4" WASHERS ONE ON
EACH SIDE OF THE METAL
HOUSING.

