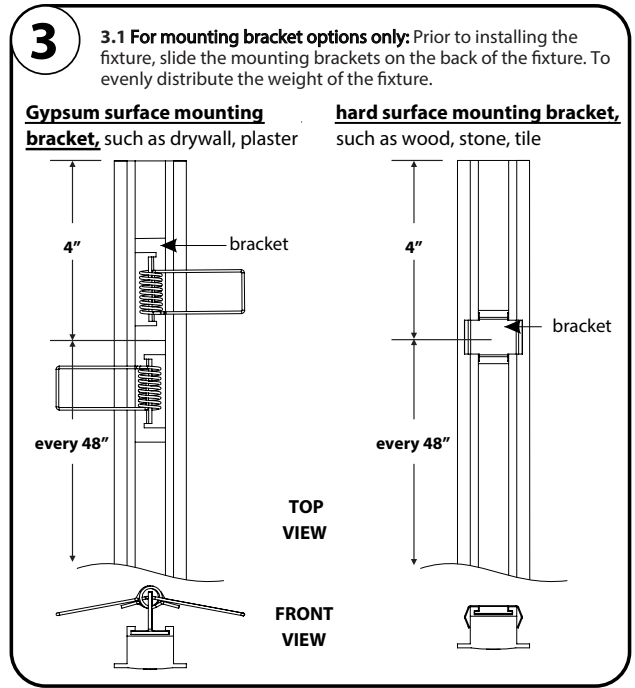
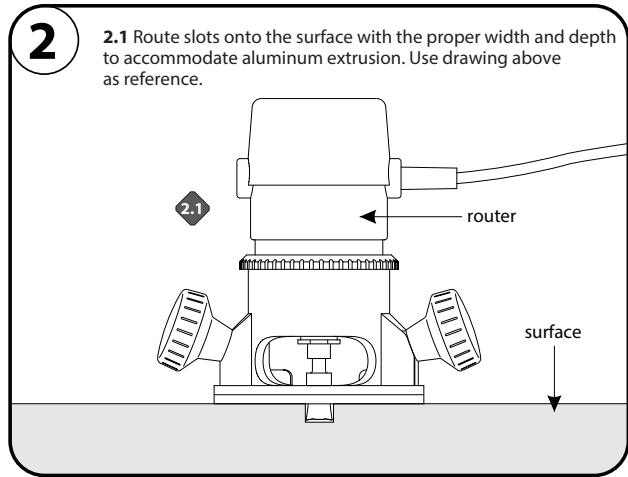
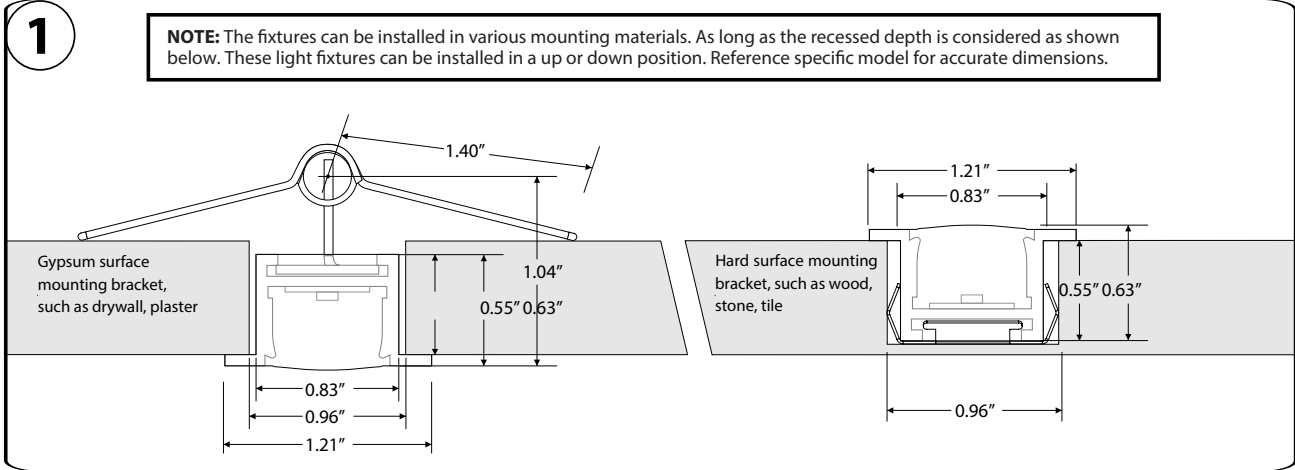


INSTALLATION INSTRUCTIONS



INSTALLATION INSTRUCTIONS

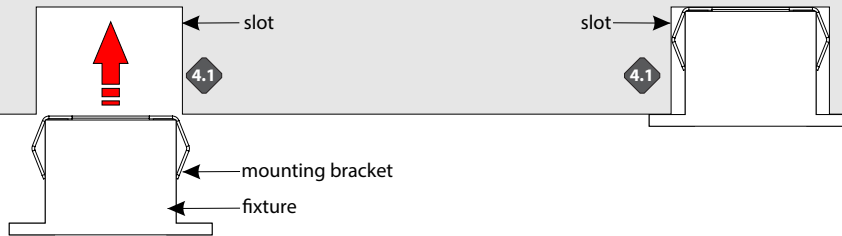
4

NOTE: Fixture wires must be considered, prior to installing. Reference wiring diagram for additional information on step 5.

NOTE: Follow one of the three mounting options, to properly install fixture.

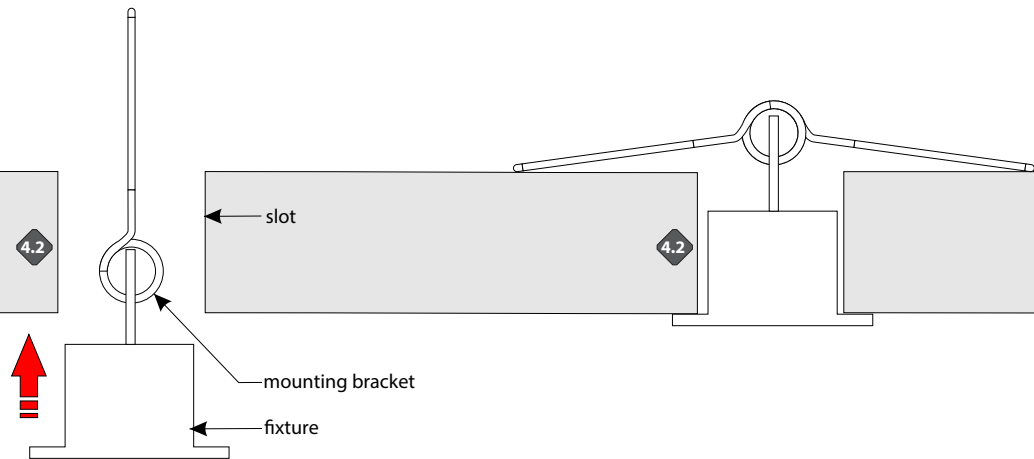
4.1 For hard surface mounting bracket option: Align the mounting brackets to the cutout slot, then carefully push the fixture completely inside to the slot to secure.

HS mounting:
Hard surface
mounting bracket



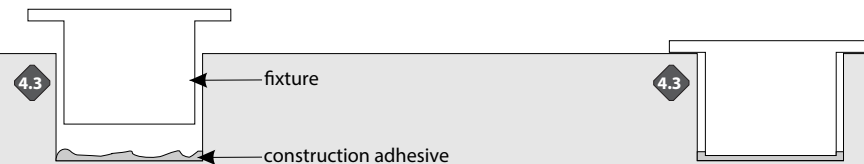
4.2 For soft surface mounting bracket option: Bend the adjustable springs to a straight position, followed by pushing the fixture completely inside the cutout slot. Then release the springs to secure.

GS mounting
Gypsum surface
mounting bracket

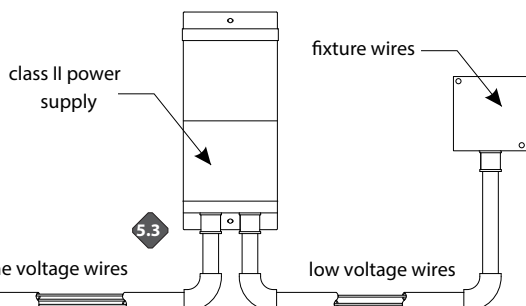


4.3 For no mounting bracket option: Apply construction adhesive to the bottom of the cutout slot, then place fixture onto adhesive to secure.

NB mounting
No bracket
mounting



5



5.1 Ensure the correct (wattage & voltage) power supply is used to power the fixture. Then proceed to connect the fixture wires from fixture to the Power supply. For more information please refer to power supply wiring instructions.