

Project Name:

Type:

Quantity:

FIXTURE SPECIFICATIONS

INTENDED USE

Our RGB+W architectural-grade LED product series delivers color-changing or regular white light for commercial, hospitality and residential interiors. These products render this result with total user control according to one's personal preference. The pendant-mounted, surface-mounted, wall-mounted and recessed-mounted ceiling design yield illumination, performance and versatility in standard 4-foot and 8-foot lengths. The light, which works best within series F for optimal color-control consistency, can be linked for seamless runs of any length.

PRODUCT FAMILY

12100-66-RGBW-P	Pendant
12100-66-RGBW-S	Surface
12100-66-RGBW-W	Wall
12100-66-RGBW-R	Recessed

AVAILABLE LENGTHS

4FT	W 6" x L 48" x H 6"
8FT	W 6" x L 96" x H 6"

FEATURES

Construction: Die-formed and welded 22-gauge cold rolled steel
Continuous Run: Full ability to tandem mount for continuous run application
Controller: Wired touch wall control panel or Bluetooth via Illumi Mobile App (Available for iOS and Android devices)
Control color, tune white light, create schedules, or use preloaded effects
Lens: Glare-free snap-in frosted acrylic for even distribution
Voltage: 120-277V
Dimming: Via touch wall control or mobile app controller
CRI: 80+
Color Temperature: RGB with White (3000K). For optimal color control consistency, this product works best within series F
Life: 50,000 hours L70
Warranty: 5 years carefree for parts & components (labor not included)
Listings: cETL listed, LED chips tested to LM-80 standards



New Illumi
Give Life to Light
iOS + Android



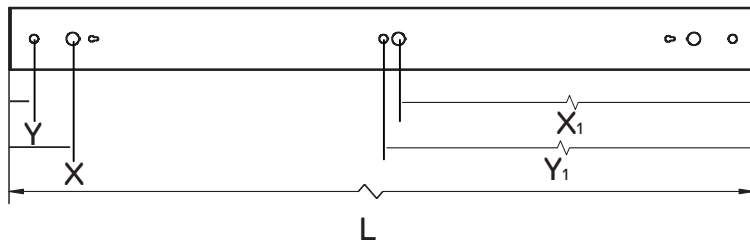
ORDERING INFORMATION Example: (12100-66-RGBW-P-8-R27-WH-AC8)

Model	Mount	Length	Wattage Lumens	Finish	Mounting	Controls
12100-66-RGBW	P Pendant	4 4 Feet	R27 27 Watts 1600lms	WH White	AC4 4' Adjustable Aircraft Cable (x2)	Blank Downloadable Bluetooth App
	S Surface	8 8 Feet	R54 54 Watts 3200lms	BK Black	AC8 8' Adjustable Aircraft Cable (x2)	WRF-W¹ Wall Control (Wireless RF Technology) White Finish
	W Wall	CRXX Continuous Run (Replace XX with Run Length in Feet)		SL Silver	ST2 2' Stem	WRF-B¹ Wall Control (Wireless RF Technology) Black Finish
	R Recessed			SB Satin Brass		WDMX-W Wall Control (Wired DMX Technology) White Finish
				BL Blue		WDMX-B Wall Control (Wired DMX Technology) Black Finish
				OR Orange		
				GR Green		
				RD Red		
				RAL Consult Factory		

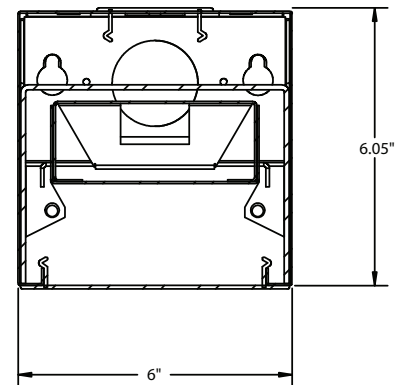
¹ Controller to be placed with 10 feet of the fixture and can only control up to 2 fixtures.

DRAWINGS AND DIMENSIONS

Pendant Mount



END VIEW



L	W	H	X	Y	X ₁	Y ₁
12.00"	6.00"	6.05"	*	*	*	*
24.00"	6.00"	6.05"	*	*	*	*
36.00"	6.00"	6.05"	*	*	*	*
48.00"	6.00"	6.05"	4.00"	1.50"	23.00"	24.00"
60.00"	6.00"	6.05"	*	*	*	*
72.00"	6.00"	6.05"	*	*	*	*
84.00"	6.00"	6.05"	*	*	*	*
96.00"	6.00"	6.05"	4.79"	6.00"	48.97"	48.00"

L-Length

W-Width

H-Height

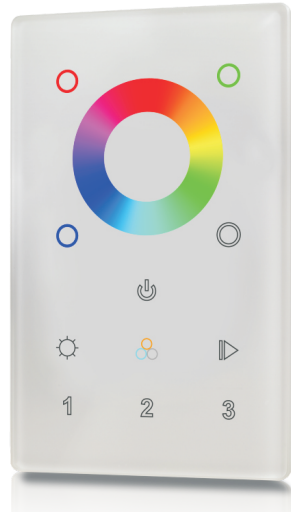
X-0.875" Knock Out Distance

Y-0.575" Hanging Kit Distance

* - Please consult factory



RGBW Touch DMX512 Wall Control Panel



Feature

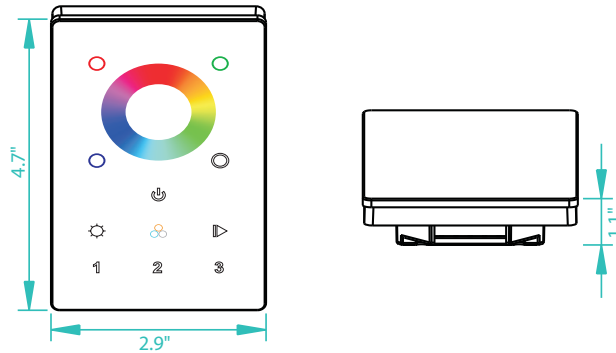
- 3 zones
- Sensitive Glass Touch Panel
- DMX512 Signal
- White & Black
- North American Size
- Max 20 fixtures (receivers) per control



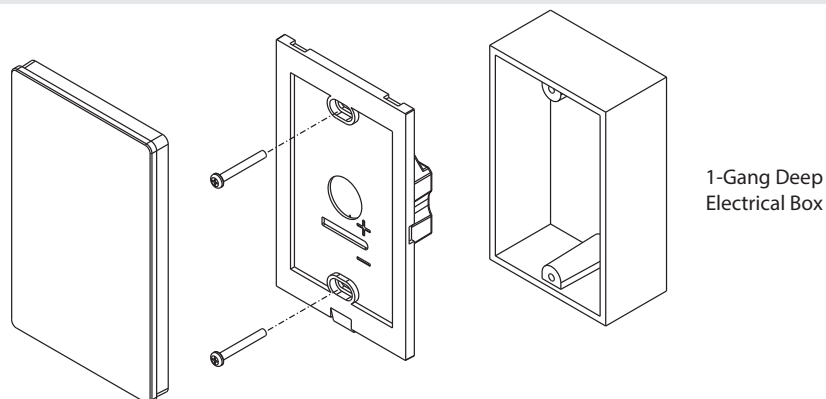
Parameter

Operation Voltage	OUTPUT	DIMENSIONS
12-24VDC	434MHz/868MHz	4.7" x 2.9" x 1.1"

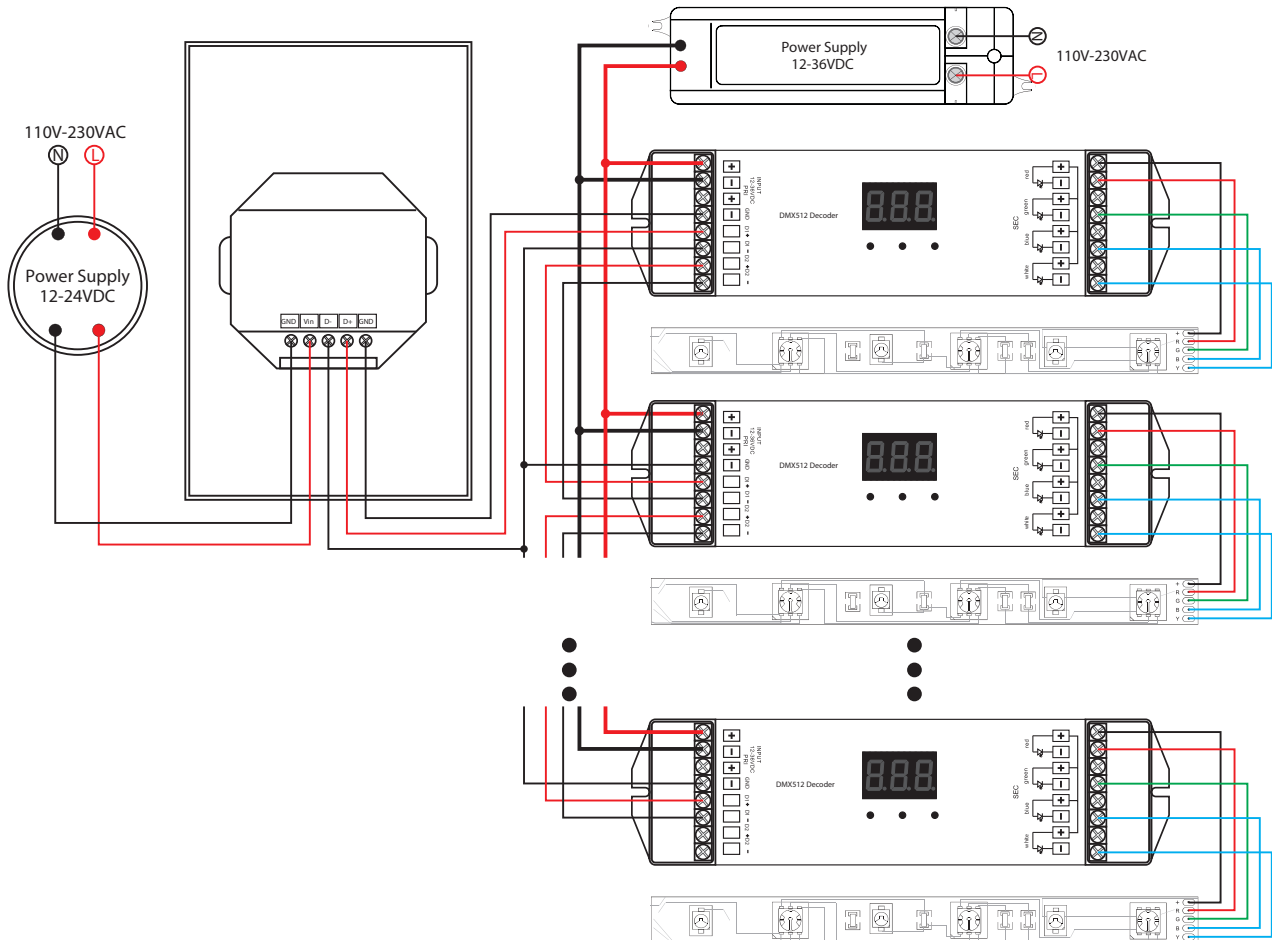
Product Size



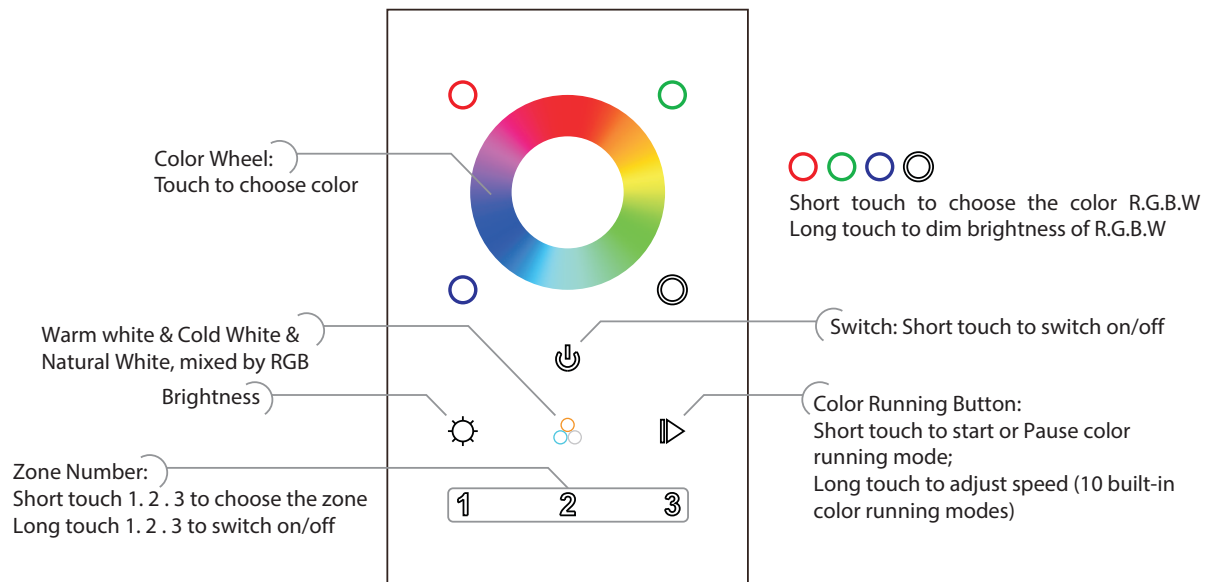
Installation



Wiring Diagram



Button Introduction



RGBW TOUCH DMX512 WALL CONTROL PANEL

Operation

How to Set DMX Address ?

One Wall Control Panel can control 3 zones separately or synchronously

Each Zone can control DMX Decoders like our wall control panel.

All DMX Decoders

In Zone 1 set as 001

In Zone 2 set as 005

In Zone 3 set as 009

Note: one DMX Decoder has 4 channels take 4 DMX Address, zone one take 001, 002, 003, 004: zone 2 take 005,006.007.008, zone 3 take 009. 010.011.012

Safety & Warnings

- 1) The product shall be installed and serviced by a qualified person.
- 2) IP20. Please avoid the sun and rain. When installed outdoors, please ensure it is mounted in a water proof enclosure.
- 3) Always be sure to mount this unit in an area with proper ventilation to avoid overheating.
- 4) Please check if the output voltage of any LED power supplies used comply with the working voltage of the product.
- 5) Never connect any cables while power is on and always assure correct connections to avoid short circuits before switching on.
- 6) Please ensure that the cable is secured tightly in the connector
- 7) For update information please consult your supplier.