

Project Name:

Type:

Quantity:

FIXTURE SPECIFICATIONS

INTENDED_USE

The specification grade **Continuum 64 Architectural Linear LED Suspension Lighting** delivers continuous clean lines and clear light to commercial, hospitality and residential interior lighting applications. Our modern, slim profiles and stylish designs offer excellent illumination, exceptional performance and versatility in offices, classrooms, conference rooms, museums, retail outlets, hotels, restaurants, and more. The integrated LED Continuum is available in standard lengths of 4' and 8'. The Continuum 64 can be joined together in seamless runs of any length.

PRODUCT FAMILY

12100-64-P Pendant Mount

12100-64-S Surface Mount

AVAILABLE LENGTHS

4FT, & 8FT

Continuous Run | Consult Factory
Custom Length | Consult Factory

FEATURES

Construction: Die-formed and welded 22-gauge cold rolled steel, painted finish with premium paint

Continuous Run: Full ability to tandem mount for continuous run application

Indirect Mounting: For most effective indirect lighting result, mount at no less than 18" from the ceiling

Custom Design: Offered with pre-fabricated and fully illuminated corners

Lens: Glare-free snap in frosted acrylic for even distribution

Voltage: 50/60 Hz Constant current 0-10V @ 120-277V, TRIAC & ELV @ 120V

Dimming: 0-10V, TRIAC (Forward-Phase), ELV (Reverse-Phase)

Controls: Lutron Vive, Lutron Ecosystem, Philips EasySense, Siemens Enlightend

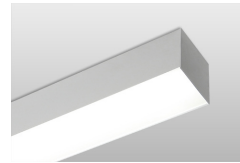
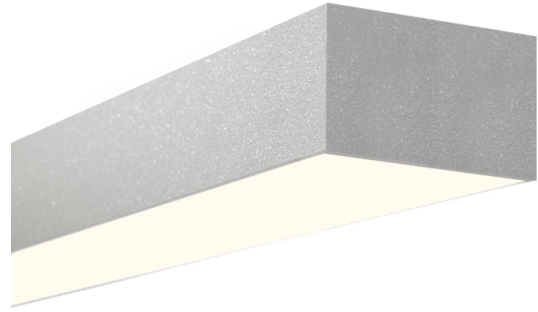
CRI: 80+ & 90+

Life: +60,000 Reported L70 hours @ 55°C

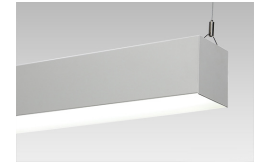
Operating Temperature: 4°F (-20°C) - 122°F (50°C).

Warranty: 5 Years Carefree for Parts & Components (Labor not included)

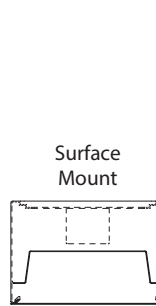
Listings: UL / CUL listed, DLC listed, ADA compliant



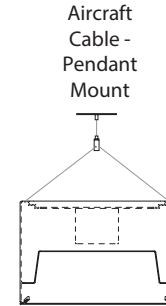
Surface



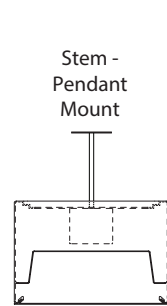
Pendant



Surface Mount



Aircraft Cable - Pendant Mount



Stem - Pendant Mount



ORDERING INFORMATION Example: (12100-64-P-D18-S-4-27K-10-WH-8)

Model	Mounting	LED Downlight	LED Uplight ¹	Shape	Color Temp	Dimming	Finish	Pendant Mounting	CRI	Options	Optional Controls
12100-64 6" x 4"	P Pendant S Surface	Per 4 Foot Sections D18 18 Watts 2936 Lumens D27 27 Watts 3696 Lumens D36 36 Watts 3964 Lumens D48 48 Watts 5536 Lumens D54 54 Watts 5868 Lumens Wireless Tunable White DLO ³ Watts 1920 lms DHO ³ Watts 3072 lms	Per 4 Foot Sections Blank No Uplight I18 18 Watts 2936 Lumens I27 ² 27 Watts 3696 Lumens Wireless Tunable White ILO ³ Watts 1920 lms IHO ³ Watts 3072 lms	S Single Run CR Continuous Run	Standard 27K 2700K 30K 3000K 35K 3500K 40K 4000K 50K 5000K TW ⁴ Tunable White 2700-5000K TW2065 ⁴ Tunable White 2000-6500K TW2762 ^{3,5} Wireless Tunable White 2700-6200K	010 ^{Standard} 0-10V 5-Wire TRI TRIAC Forward Phase 2-Wire ELV Electronic Low Voltage Reverse Phase 3-Wire DL DALI 050 Tunable White 0-10V 24V ³ Wireless Tunable White 24V	WH ^{Standard} White (Matte) RAL# 9003 BK Black (Matte) RAL# 9011 SL Silver (Matte) RAL# 9022 XXXX Specify XXXX: Use RAL # found on Page 2	(Blank) None Required AC4 4' Adjustable Aircraft Cable AC8 8' Adjustable Aircraft Cable ACX Specify X in Feet (Max 30') ST2 2' Stem ST4 4' Stem STX Specify X in Feet (Max 8')	8 ^{Standard} 80+ CRI 9 90+ CRI	Blank No Options EM5 5W Emergency Backup Battery EM8 8W Emergency Backup Battery EM16 16W Emergency Backup Battery OS Occupancy Sensor w/ Daylight Harvesting DS Daylight Dimming Photo Sensor AB Separate Dimming Control of Uplight and Downlight	Blank No Controls WWR-WH ⁵ Tunable White Wireless Wall Remote White Finish WWR-BK ⁵ Tunable White Wireless Wall Remote Black Finish WDR-BK ⁵ Tunable White Wireless Desktop Remote Black Finish LV Lutron Ecosystem™ LE Lutron Ecosystem™ PH Philips EasySense™ EN Siemens Enlightened™




¹ Only available for Pendant and Wall Mount
² Only compatible with D27 & D48 Downlight Wattages
³ Must specify for Wireless Tunable White
⁴ Must be Paired with 050 Dimming
⁵ Must specify Wall or Desktop Remote Wireless Control for Wireless Tunable White

Available Finishes





Standard

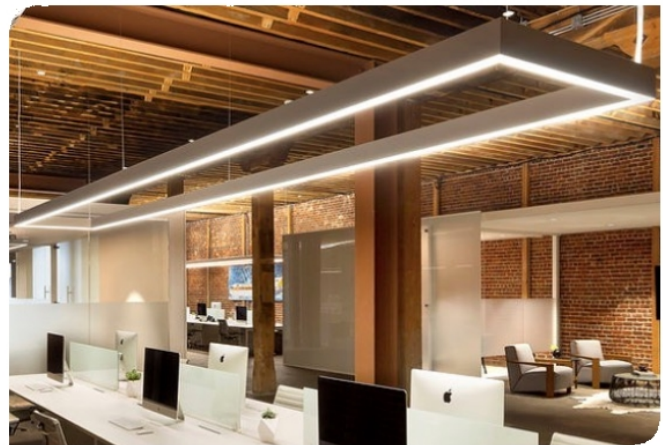
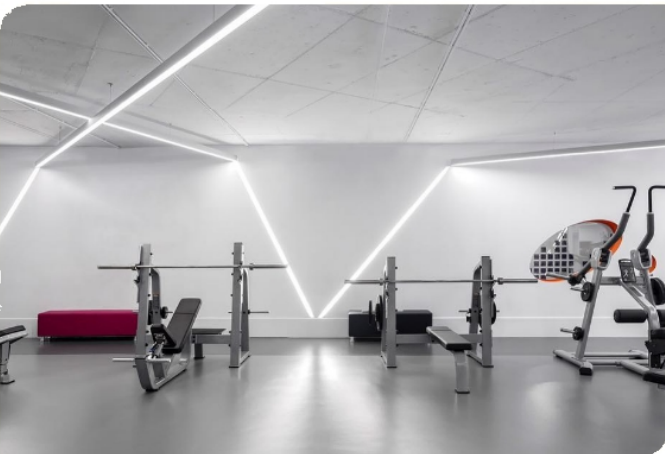
	01	White	RAL #9003
	02	Black	RAL #9011
	03	Silver	RAL #9022
	04	Crystal White	RAL #9010
	05	Natural Aluminum	RAL #7035
	06	Hampden	RAL #9001
	07	London	RAL #7044

Metropolitan

	08	Urban Native	RAL #8025
	09	Military Green	RAL #6011
	10	Carmin	RAL #8028
	11	Chocolate Spice	RAL #8017
	12	Asher Grey	RAL #7004
	13	Tech Grey	RAL #7016
	14	Slate	RAL #7031
	15	Mason	RAL #7039

Vibrant

	16	Violet Dreams	RAL #4006
	17	Sangria Sunset	RAL #2004
	18	Deep Pink	RAL #4010
	19	Ruby Red	RAL #3027
	20	Island Skye	RAL #6027
	21	Sophia	RAL #5015
	22	Antique Spring	RAL #6019
	23	Daisy	RAL #1018
	24	Gun Metal	RAL #7024



Controls

Smart Sensors	Protocol	Compatible Networks	Occupancy	Daylight	Temperature Reporting	Communication to Luminaire
	Enlighted RF	Enlighted RF	Integrated	Integrated	Yes	Wireless
	EcoSystem	Quantum, Energi Savr Node, Energi TriPak	Enabled	Enabled	No	Wired
	Lutron Clear Connect*	Lutron Vive System Network	Enabled	Enabled	No	Wireless
	ZigBee HA	Philips	Enabled	Enabled	No	Wired

Controls Installed on the Fixture



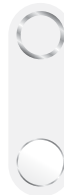
FCJS-010
Individual
Fixture Control

Fixture Will be Shipped LUTRON VIVE Enabled with LUTRON FCJS-010 0-10V Control Module Installed on the Fixture. Fixtures will be compatible with Lutron FC-SENSOR Occupancy/Daylight Sensor or FC-VSENSOR Vacancy/Daylight Sensor which can be Added in the Field for Remote Mounting. Fixture May be Controlled with any Vive control systems. Fixtures must be ordered with a 0-10V. Driver.



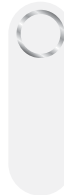
FCJS-ECO
Individual
Fixture Control

Fixture Will be Shipped LUTRON VIVE Enabled with LUTRON FCJS-ECO EcoSystem Control Module Control Module Installed on the Fixture. Fixtures will be compatible with Lutron FC-SENSOR Occupancy/Daylight Sensor or FC-VSENSOR Vacancy/Daylight Sensor which can be Added in the Field for Remote Mounting. Fixture May be Controlled with any Vive control systems. Fixtures must be ordered with a Lutron Driver.



DFCSJ-OEM-OCC

Fixture Will be Shipped LUTRON VIVE Enabled with DFCSJ-OEM-OCC* Vive Integral Fixture Control (with Sensing) Installed on the Fixture. Fixture May be Controlled with any Vive control systems. Fixtures must be ordered with a DMX or Lutron EcoSystem Driver



DFCSJ-OEM-RF

Fixture Will be Shipped LUTRON VIVE Enabled with LUTRON DFCSJ-OEM-RF* Vive Integral Fixture Control (RF Only) Installed on the Fixture. Fixture May be Controlled with any Vive control systems. Fixtures must be ordered with a DMX or Lutron EcoSystem Driver.

Controls Provided by Lutron



Vive Wireless Hub



DayLight
Sensor



Ceiling Mount
Occupancy/Daylight
Sensor



Ceiling Mount
Occupancy Sensor



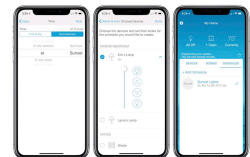
Pico
Remote



Wall Mount
Switch



Wall Mount
Occupancy Sensor



Lutron App

Controls



Fixture will be shipped with Leviton ZL027-N0W power control module installed on the fixture. Fixtures will be compatible with Leviton ZL00J-D0W sensor control module which can be added in the field for remote mounting. Fixture must be controlled with Leviton Intellect Keypad Room Controller, or Leviton Neuron App.



ZL027-N0W
Power control module



ZL00J-D0W
Sensor control module

Leviton Keypad



ZLDNK-1W



ZLDNK-2W



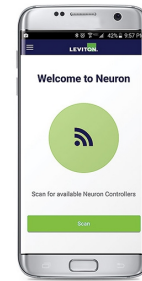
ZLDNK-4W



ZLDNK-8W

Intellect™ Keypad Room Controller (Required)

Leviton App



Neuron App



Philips EasySense sensors provide luminaire-level control with Occupancy sensing, Daylight harvesting, and Field task tuning.

Controls Installed on the Fixture



PHILIPS-XSR + SNS200

Fixture will be Shipped with EasySense SNS200 Sensor installed and PHILIPS-XSR driver. Fixture May Only be Controlled with Philips Field App or Wireless Switches.



SRB + SNS200

Fixture Will be Shipped with EasySense SNS200 Sensor installed and PHILIPS SRB Bridge. Fixture May Only be Controlled with Philips Field App or Wireless Switches or any 0-10V. Wall Box Dimmer.



Controls Provided by Philips



ZBT-S1AWH



ZBT-S2AWH

Ilumra Wireless Switches



PHILIPS-XSR + SNS200-CMP

Fixture will be Shipped Sensor Ready with PHILIPS-XSR driver and EasySense SNS200-CMP Sensor which is Included to be Remote Mounted. Fixture May Only be Controlled with Philips Field App or Wireless Switches



SRB + SNS200-CMP

Fixture Will be Shipped Sensor Ready with PHILIPS SRB Bridge and EasySense SNS200-CMP Sensor which is Included to be Remote Mounted. Fixture May Only be Controlled with Philips Field App or Wireless Switches or any 0-10V. Wall Box Dimmer.



SRB

Fixture will be Shipped Sensor Ready with SRB Bridge. Fixture will be Compatible with EasySense Sensor SNS200-CMP which can be Added in the Field for Remote Mounting. Fixture May Only be Controlled with Philips Field App or Wireless Switches or any 0-10V. Wall Box Dimmer.



Philips Field App

Compatible Dimmers

0-10V Tunable White

For use with TW2750 & TW2065

Must order two to control

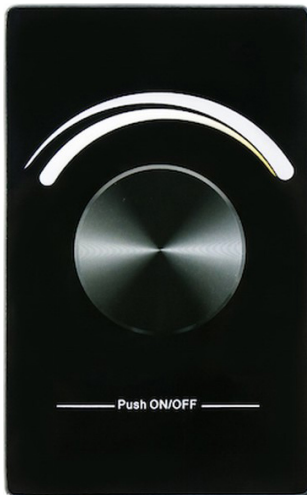
Dimming + ON/OFF & color temp tuning

MFG	Triac	ELV	
	TG-600P	DVELV-303P	NTSTV
	LG-600P	SELV-300P	NFTV
	TGCL-153P	MAELV-600	DVSTV
	DV-600P	FAELV-500	DVTV
	DVCL-153P		
	S-603PG		
	CT-103P		
S-600P			
	6161	IPE04	IP710-DLZ
	6633-P	VPE06-1LZ	
	6683		
	6631-2		
	IPI06-1LZ		

Wireless Control Tunable White

	Wall	Desktop
Dimensions	L - 4 3/8" x W - 3 1/4" x D - 1 3/4"	L - 4 3/8" x W - 3 1/4" x D - 2 1/2"
Weight	0.35 lbs	
Dimming Type	PWM	
Signal Type	RF (Radio Frequency) 434 MHz/868MHz	
Range	100ft from fixture	
Maximum Load	24V @ DC 480W	
Working Temperature	-20°F to 140°F (-28C to 60°C)	
Battery	3V (CR2032 Battery)	

Wall

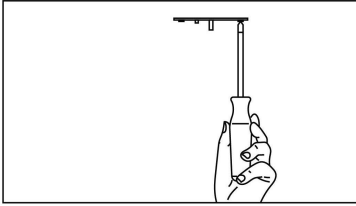


Desktop

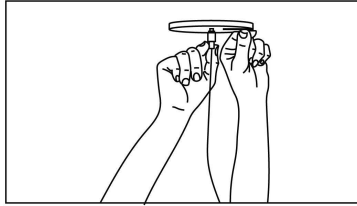


Pendant Installation

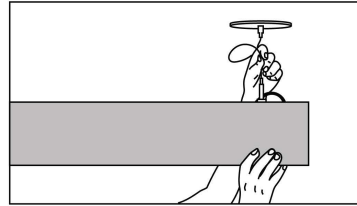
A simple design and adjustable components provide a flexible and hassle-free experience when installing the Continuum Series™.



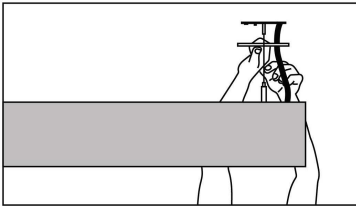
Step 1: Secure cross brackets to junction boxes for both power and non power mounting points.



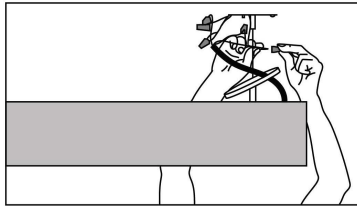
Step 2: Secure canopy with power canopy coupler (Power Feed Mount) & secure canopy with cable terminal (Non Power Feed Mount).



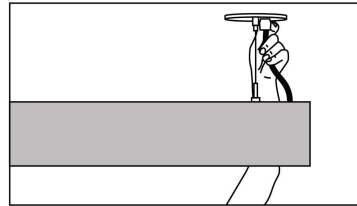
Step 3: Feed aircraft cable into cable grippers, adjust height and level luminaire.



Step 4: Unscrew outer coupler to allow access to junction box. Feed power cord through canopy.



Step 5: Secure canopy back in place with outer coupler.



Step 6: Snap strain relief around power cord. Press into canopy.

COLOR TEMPERATURE GUIDE



Emergency Battery Wiring

BATTERY CHARGE

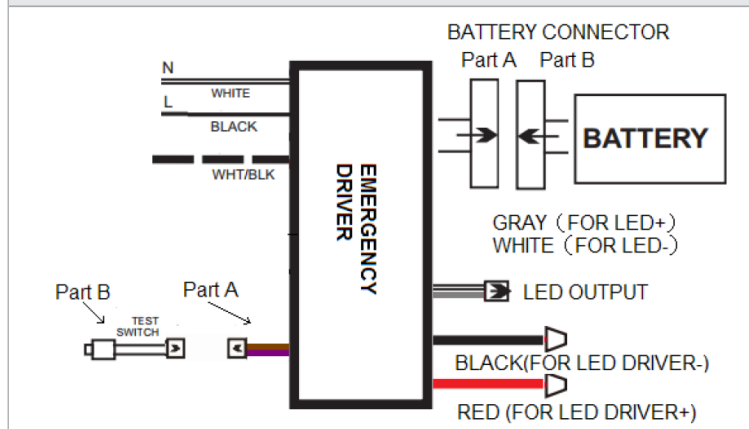
Wattage: Max load for 90 minutes

Battery Oder Code	Dimension (LxWxH)	Battery Type	Capacity	Wattage	Battery Voltage	Re-Charging Time
EM5	8.1" x 1.10" x 0.84"	LiFePO4	1000mAH	5W	9.6V	24 Hrs
EM8	8.1" x 1.10" x 0.84"		1500mAH	8W		24 Hrs
EM16	9.37" x 1.22" x 1.20"		3000mAH	16W		32 Hrs

Battery Dimensions	Program Switch	Features
		<p>Programmable Constant Current</p> <ul style="list-style-type: none"> Pre-set by factory User Adjustable <p>Adjustable Output Current</p> <ul style="list-style-type: none"> 10 range 50mA per scal

WIRING DIAGRAM

WIRE TYPE



Wire	Length (in)
White	13.0
Black	13.0
White/Black	35.0
Battery Connector (Part A)	18.0
Battery Connector (Part B)	12.0
Test Switch (Part A)	1
Test Switch (Part B)	24.0
Black (for LED Driver-)	35.0
Red (for LED Driver+)	35.0
LED OUTPUT	35.0

WIRING DIAGRAM (TYPE)

WIRING DIAGRAM (EMERGENCY ONLY)

