

## FIXTURE SPECIFICATIONS

### INTENDED USE

Our commercial-grade pendant affords light in commercial, hospitality and residential interiors. The modern chandelier yields both downlighting and uplighting for versatility and exceptional performance in office, conference room, retail, hotel and restaurant specifications.

### PRODUCT FAMILY

**12100-40-P-T** T Shape  
**12100-40-P-L** L Shape

### AVAILABLE LENGTHS

**2FT, 3FT, 4FT, 6FT & 8FT**  
**Continuous Run** | Consult Factory  
**Custom Length** | Consult Factory

### FEATURES

- Construction:** Die-Formed and welded 22-gauge cold rolled steel, painted finish with premium paint
- Continuous Run:** Full ability to tandem mount for continuous run application
- Indirect Mounting:** For Most Effective Indirect Lighting Result, Mount at No Less Than 18" from the Ceiling
- Custom Design:** Offered with Pre-Fabricated and Fully Illuminated Corners
- Lens:** Glare Free Snap In Frosted Acrylic for Even Distribution
- Voltage:** 50/60 Hz Constant Current 0-10V @ 120-277V, TRIAC & ELV @ 120V
- Dimming:** 0-10V, TRIAC (Forward-Phase), ELV (Reverse-Phase)
- Controls:** Lutron Vive, Lutron Ecosystem, Philips EasySense, Siemens Enlightend
- CRI:** 80+ & 90+
- Life:** +60,000 Reported L70 Hours @ 55°C
- Operating Temperature:** 4°F (-20°C) ~ 122°F (50°C).
- Warranty:** 5 Years Carefree for Parts & Components (Labor Not Included)
- Listings:** UL / CUL listed, DLC listed, ADA compliant,



## ORDERING INFORMATION

Example: (12100-40-P-D18-U-26+26-27K-010-WH-AC4-8)

Model	Mounting	LED Downlight	LED Uplight <sup>1</sup>	Shape	U Shape							
<b>12100-40</b> 4" x 4"	<b>P</b> Pendant	<b>Per 4 Foot Sections</b> <b>D18</b> 18 Watts   2661 Lumens	<b>Per 4 Foot Sections</b> <b>Blank</b> No Uplight	<b>U</b> U Shape		<b>Color Temp</b>	<b>Dimming</b>	<b>Finish</b>	<b>Pendant Mounting</b>	<b>CRI</b>	<b>Options</b>	<b>Optional Controls</b>
	<b>S</b> Surface	<b>D27</b> 27 Watts   3302 Lumens	<b>U18</b> 18 Watts   2661 Lumens			<b>Residential</b> <b>27K</b> 2700K <b>30K</b> 3000K	<b>010</b> 0-10V 5-Wire	<b>WH</b> White (Matte) RAL# 9003	<b>(Blank)</b> None Required	<b>8</b> 80+ CRI	<b>Blank</b> No Options	<b>Blank</b> No Controls
		<b>D36</b> 36 Watts   4560 Lumens	<b>U27</b> 27 Watts   3302 Lumens			<b>Commercial</b> <b>35K</b> 3500K <b>40K</b> 4000K	<b>TRI</b> TRIAC Forward Phase 2-Wire	<b>BK</b> Black (Matte) RAL# 9011	<b>AC4</b> 4' Adjustable Aircraft Cable	<b>9</b> 90+ CRI	<b>EM5</b> 5W Emergency Ballast	<b>LV</b> Lutron VIVE™ Wireless
		<b>D48</b> 48 Watts   5486 Lumens				<b>Industrial</b> <b>50K</b> 5000K	<b>ELV</b> Electronic Low Voltage Reverse Phase 3-Wire	<b>SL</b> Silver (Matte) RAL# 9022	<b>AC8</b> 8' Adjustable Aircraft Cable		<b>EM8</b> 8W Emergency Ballast	<b>LE</b> Lutron Ecosystem™
		<b>D54</b> 54 Watts   6459 Lumens				<b>Tunable White</b> <b>TW</b> Tunable White 2700-5000K	<b>DL</b> DALI	<b>XXXX</b> Specify XXXX: Use RAL # found on Page 2	<b>ACX</b> Specify X in Feet (Max 30')		<b>EM16</b> 16W Emergency Ballast	<b>PH</b> Philips EasySense™
								<b>ST2</b> 2' Stem		<b>OS</b> Occupancy Sensor w/ Daylight Harvesting	<b>EN</b> Siemens Enlightened™	
								<b>ST4</b> 4' Stem		<b>DS</b> Daylight Dimming Photo Sensor		
								<b>STX</b> Specify X in Feet (Max 8')		<b>AB</b> Separate Dimming Control of Uplight and Downlight		

<sup>1</sup> Length Minimum 26"  
<sup>2</sup> Length Minimum 26"

## Available Finishes

### Standard

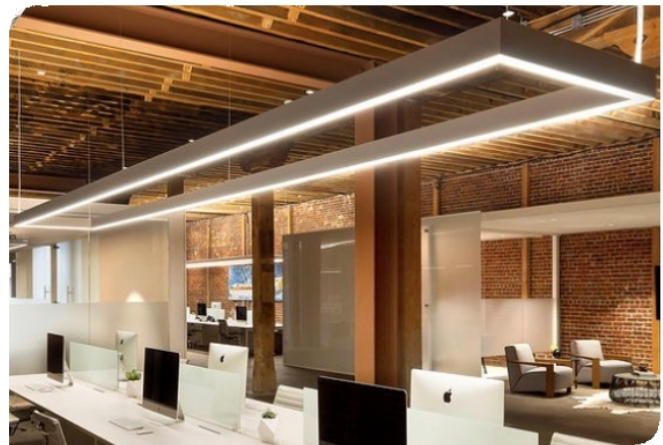
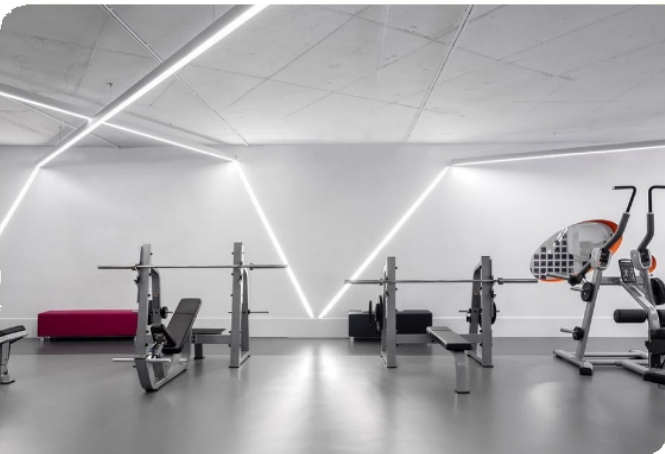
	01	White	RAL #9003
	02	Black	RAL #9011
	03	Silver	RAL #9022
	04	Crystal White	RAL #9010
	05	Natural Aluminum	RAL #7035
	06	Hampden	RAL #9001
	07	London	RAL #7044

### Metropolitan

	08	Urban Native	RAL #8025
	09	Military Green	RAL #6011
	10	Carmin	RAL #8028
	11	Chocolate Spice	RAL #8017
	12	Asher Grey	RAL #7004
	13	Tech Grey	RAL #7016
	14	Slate	RAL #7031
	15	Mason	RAL #7039

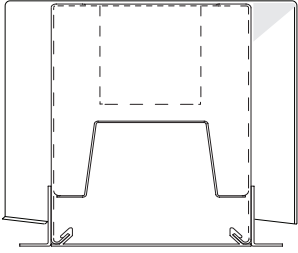
### Vibrant

	16	Violet Dreams	RAL #4006
	17	Sangria Sunset	RAL #2004
	18	Deep Pink	RAL #4010
	19	Ruby Red	RAL #3027
	20	Island Skye	RAL #6027
	21	Sophia	RAL #5015
	22	Antique Spring	RAL #6019
	23	Daisy	RAL #1018
	24	Gun Metal	RAL #7024

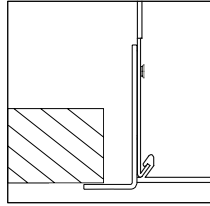


Details

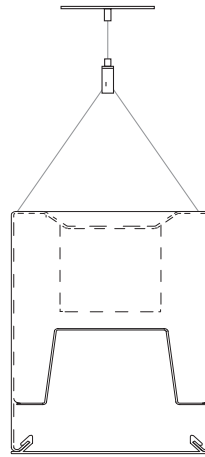
Drywall



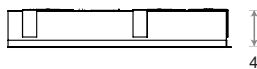
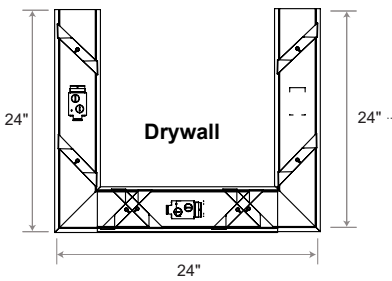
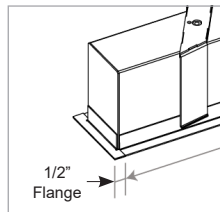
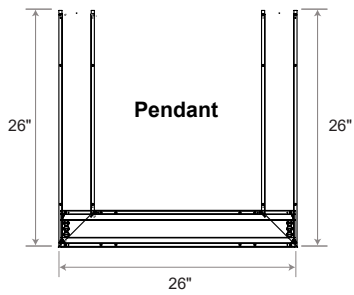
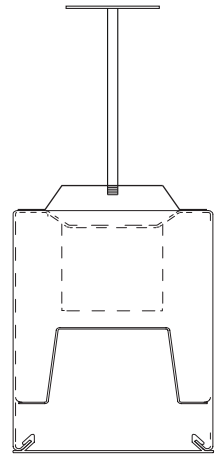
Flange Detail



Cable Pendant



Stem Pendant



Controls

Smart Sensors	Protocol	Compatible Networks	Occupancy	Daylight	Temperature Reporting	Communication to Luminaire
<b>enlighted</b>	Enlighted RF	Enlighted RF	Integrated	Integrated	Yes	Wireless
<b>LUTRON</b>	EcoSystem	Quantum, Energi Savr Node, Energi TriPak	Enabled	Enabled	No	Wired
<b>VIVE</b>	Lutron Clear Connect*	Lutron Vive System Network	Enabled	Enabled	No	Wireless
<b>PHILIPS</b>	ZigBee HA	Philips	Enabled	Enabled	No	Wired

Controls Installed on the Fixture



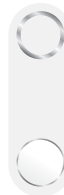
**FCJS-010**  
Individual  
Fixture Control

Fixture Will be Shipped LUTRON VIVE Enabled with LUTRON FCJS-010 0-10V Control Module Installed on the Fixture. Fixtures will be compatible with Lutron FC-SENSOR Occupancy/Daylight Sensor or FC-VSENSOR Vacancy/Daylight Sensor which can be Added in the Field for Remote Mounting. Fixture May be Controlled with any Vive control systems. Fixtures must be ordered with a 0-10V. Driver.



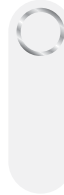
**FCJS-ECO**  
Individual  
Fixture Control

Fixture Will be Shipped LUTRON VIVE Enabled with LUTRON FCJS-ECO EcoSystem Control Module Control Module Installed on the Fixture. Fixtures will be compatible with Lutron FC-SENSOR Occupancy/Daylight Sensor or FC-VSENSOR Vacancy/Daylight Sensor which can be Added in the Field for Remote Mounting. Fixture May be Controlled with any Vive control systems. Fixtures must be ordered with a Lutron Driver.



**DFCSJ-OEM-OCC**

Fixture Will be Shipped LUTRON VIVE Enabled with DFCSJ-OEM-OCC\* Vive Integral Fixture Control (with Sensing) Installed on the Fixture. Fixture May be Controlled with any Vive control systems. Fixtures must be ordered with a DMX or Lutron EcoSystem Driver



**DFCSJ-OEM-RF**

Fixture Will be Shipped LUTRON VIVE Enabled with LUTRON DFCSJ-OEM-RF\* Vive Integral Fixture Control (RF Only) Installed on the Fixture. Fixture May be Controlled with any Vive control systems. Fixtures must be ordered with a DMX or Lutron EcoSystem Driver.

Controls Provided by Lutron



Vive Wireless Hub



DayLight  
Sensor



Ceiling Mount  
Occupancy/Daylight  
Sensor



Ceiling Mount  
Occupancy Sensor



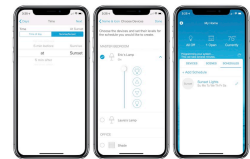
Pico  
Remote



Wall Mount  
Switch



Wall Mount  
Occupancy Sensor



Lutron App

**Controls**



Fixture will be shipped with Leviton ZL027-N0W power control module installed on the fixture. Fixtures will be compatible with Leviton ZL00J-D0W sensor control module which can be added in the field for remote mounting. Fixture must be controlled with Leviton Intellect Keypad Room Controller, or Leviton Neuron App.



**ZL027-N0W**  
Power control module



**ZL00J-D0W**  
Sensor control module

**Leviton Keypad**



**ZLDNK-1W**



**ZLDNK-2W**



**ZLDNK-4W**



**ZLDNK-8W**

Intellect™ Keypad Room Controller (Required)

**Leviton App**



Neuron App



Philips EasySense sensors provide luminaire-level control with Occupancy sensing, Daylight harvesting, and Field task tuning.

**Controls Installed on the Fixture**



**PHILIPS-XSR + SNS200**

Fixture will be Shipped with EasySense SNS200 Sensor installed and PHILIPS-XSR driver. Fixture May Only be Controlled with Philips Field App or Wireless Switches.



**SRB + SNS200**

Fixture Will be Shipped with EasySense SNS200 Sensor installed and PHILIPS SRB Bridge. Fixture May Only be Controlled with Philips Field App or Wireless Switches or any 0-10V. Wall Box Dimmer.



**Controls Provided by Philips**



**ZBT-S1AWH**



**ZBT-S2AWH**

Ilumra Wireless Switches



**PHILIPS-XSR + SNS200-CMP**

Fixture will be Shipped Sensor Ready with PHILIPS-XSR driver and EasySense SNS200-CMP Sensor which is Included to be Remote Mounted. Fixture May Only be Controlled with Philips Field App or Wireless Switches



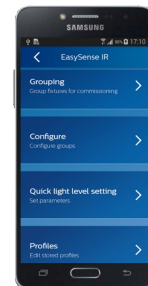
**SRB + SNS200-CMP**

Fixture Will be Shipped Sensor Ready with PHILIPS SRB Bridge and EasySense SNS200-CMP Sensor which is Included to be Remote Mounted. Fixture May Only be Controlled with Philips Field App or Wireless Switches or any 0-10V. Wall Box Dimmer.



**SRB**



Fixture will be Shipped Sensor Ready with SRB Bridge. Fixture will be Compatible with EasySense Sensor SNS200-CMP which can be Added in the Field for Remote Mounting. Fixture May Only be Controlled with Philips Field App or Wireless Switches or any 0-10V. Wall Box Dimmer.



Philips Field App



Compatible Dimmers

MFG	Triac	ELV	0-10
	TG-600P LG-600P TGCL-153P DV-600P DVCL-153P S-603PG CT-103P S-600P	DVELV-303P SELV-300P MAELV-600 FAELV-500	NTSTV NFTV DVSTV
		6161 6633-P 6683 6631-2 IPI06-1LZ	IPE04 VPE06-1LZ

## COLOR TEMPERATURE GUIDE



**Direct**

**12100-40-D27-S-4**

Illuminance at a Distance

	Center Beam FC	Beam Width
<b>1.7FT</b>	555 FC	3.9 FT 3.1 FT
<b>3.3FT</b>	147 FC	7.6 FT 6.1 FT
<b>5.0FT</b>	64.1 FC	11.6 FT 9.2 FT
<b>6.7FT</b>	35.7 FC	15.5 FT 12.3 FT
<b>8.3FT</b>	23.3 FC	19.2 FT 15.2 FT
<b>10.0FT</b>	16.0 FC	23.2 FT 18.4 FT

- Vert. Spread: 98.4°
- Horiz. Spread: 85.1°

**12100-40-D27-S-8**

Illuminance at a Distance

	Center Beam FC	Beam Width
<b>1.7FT</b>	1,117 FC	3.9 FT 3.1 FT
<b>3.3FT</b>	296 FC	7.6 FT 6.1 FT
<b>5.0FT</b>	129 FC	11.6 FT 9.2 FT
<b>6.7FT</b>	71.9 FC	15.5 FT 12.3 FT
<b>8.3FT</b>	46.8 FC	19.2 FT 15.2 FT
<b>10.0FT</b>	32.3 FC	23.2 FT 18.4 FT

- Vert. Spread: 98.4°
- Horiz. Spread: 85.1°

**Direct/Indirect**

**12100-40-D27-U27-S-4**

Illuminance at a Distance

	Center Beam FC	Beam Width
<b>1.7FT</b>	470 FC	3.9 FT 3.3 FT
<b>3.3FT</b>	296 FC	7.6 FT 6.5 FT
<b>5.0FT</b>	129 FC	11.5 FT 9.8 FT
<b>6.7FT</b>	71.9 FC	15.5 FT 13.2 FT
<b>8.3FT</b>	46.8 FC	19.1 FT 16.3 FT
<b>10.0FT</b>	32.3 FC	23.1 FT 19.7 FT

- Vert. Spread: 98.1°
- Horiz. Spread: 89.0°

**12100-40-D27-U27-S-8**

Illuminance at a Distance

	Center Beam FC	Beam Width
<b>1.7FT</b>	940 FC	3.9 FT 3.3 FT
<b>3.3FT</b>	249 FC	7.6 FT 6.5 FT
<b>5.0FT</b>	109 FC	11.5 FT 9.8 FT
<b>6.7FT</b>	60.5 FC	15.5 FT 13.2 FT
<b>8.3FT</b>	39.4 FC	19.1 FT 16.3 FT
<b>10.0FT</b>	27.2 FC	23.1 FT 19.7 FT

- Vert. Spread: 98.1°
- Horiz. Spread: 89.0°

**12100-40-D54-S-4**

Illuminance at a Distance

	Center Beam FC	Beam Width
<b>1.7FT</b>	993 FC	3.9 FT 3.1 FT
<b>3.3FT</b>	263 FC	7.6 FT 6.1 FT
<b>5.0FT</b>	115 FC	11.6 FT 9.2 FT
<b>6.7FT</b>	63.9 FC	15.5 FT 12.3 FT
<b>8.3FT</b>	41.6 FC	19.2 FT 15.2 FT
<b>10.0FT</b>	28.7 FC	23.2 FT 18.4 FT

- Vert. Spread: 98.4°
- Horiz. Spread: 85.1°

**12100-40-D54-S-8**

Illuminance at a Distance

	Center Beam FC	Beam Width
<b>1.7FT</b>	1,986 FC	3.9 FT 3.1 FT
<b>3.3FT</b>	527 FC	7.6 FT 6.1 FT
<b>5.0FT</b>	230 FC	11.6 FT 9.2 FT
<b>6.7FT</b>	128 FC	15.5 FT 12.3 FT
<b>8.3FT</b>	83.3 FC	19.2 FT 15.2 FT
<b>10.0FT</b>	54.7 FC	23.2 FT 18.4 FT

- Vert. Spread: 98.4°
- Horiz. Spread: 85.1°

**12100-40-D54-U18-S-4**

Illuminance at a Distance

	Center Beam FC	Beam Width
<b>1.7FT</b>	982 FC	3.8 FT 3.1 FT
<b>3.3FT</b>	261 FC	7.4 FT 5.9 FT
<b>5.0FT</b>	114 FC	11.3 FT 9.0 FT
<b>6.7FT</b>	63.2 FC	15.1 FT 12.1 FT
<b>8.3FT</b>	41.2 FC	18.7 FT 14.9 FT
<b>10.0FT</b>	28.4 FC	22.6 FT 18.0 FT

- Vert. Spread: 96.9°
- Horiz. Spread: 83.9°

**12100-40-D54-U18-S-8**

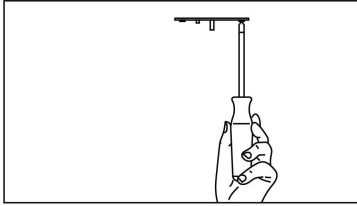
Illuminance at a Distance

	Center Beam FC	Beam Width
<b>1.7FT</b>	1,965 FC	3.8 FT 3.1 FT
<b>3.3FT</b>	521 FC	7.4 FT 5.9 FT
<b>5.0FT</b>	227 FC	11.3 FT 9.0 FT
<b>6.7FT</b>	126 FC	15.1 FT 12.1 FT
<b>8.3FT</b>	82.4 FC	18.7 FT 14.9 FT
<b>10.0FT</b>	56.8 FC	22.6 FT 18.0 FT

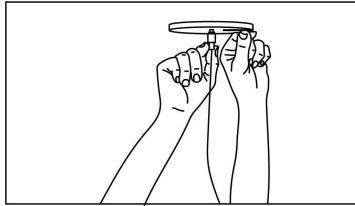
- Vert. Spread: 96.9°
- Horiz. Spread: 83.9°

## Pendant Installation

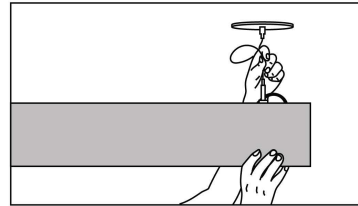
A simple design and adjustable components provide a flexible and hassle-free experience when installing the Continuum Series™.



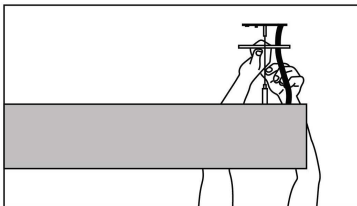
**Step 1:** Secure cross brackets to junction boxes for both power and non power mounting points.



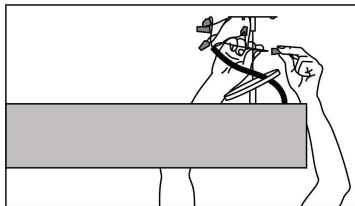
**Step 2:** Secure canopy with power canopy coupler (Power Feed Mount) & secure canopy with cable terminal (Non Power Feed Mount).



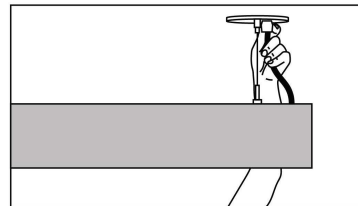
**Step 3:** Feed aircraft cable into cable grippers, adjust height and level luminaire.



**Step 4:** Unscrew outer coupler to allow access to junction box. Feed power cord through canopy.



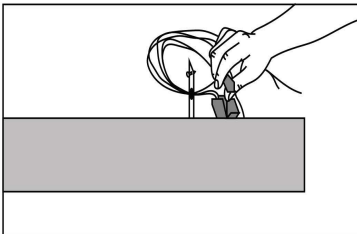
**Step 5:** Secure canopy back in place with outer coupler.



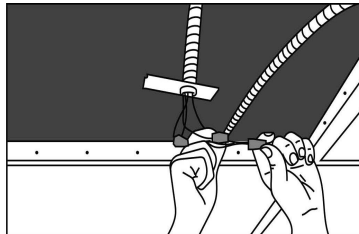
**Step 6:** Snap strain relief around power cord. Press into canopy.

## Recessed T-Bar Installation

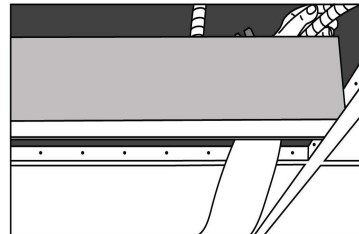
The T-Bar variant of the Continuum Series™ is built to easily install and integrate into the standard grid ceilings in modern interior spaces. The luminaire's flange conveniently hides any imperfections in cuts to the tile, creating a clean, seamless look.



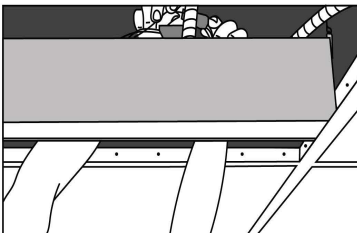
**Step 1:** Shut off power. Remove ceiling tile from desired light fixture location. Remove knockout plate. Remove pigtail.



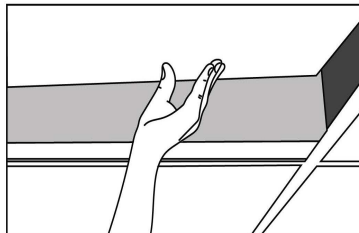
**Step 2:** Mount knockout plate to flex conduit. Connect pigtail to conduit wires.



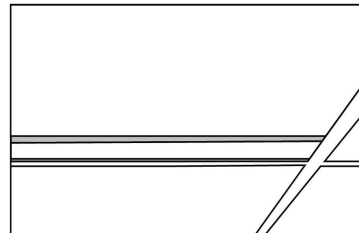
**Step 3:** Lay luminaire in grid at desired position. Secure fixture to structure above using structural wire (by others) via holes in the end plates.



**Step 4:** Connect pigtail disconnects to luminaire disconnects. Insert wires into housing. Insert knockout plate and fasten using screw provided.



**Step 5:** Cut tile to fit beside luminaire and install on both sides of the luminaire.



**Step 6:** Power can now be turned on.