

FIXTURE SPECIFICATIONS

INTENDED USE

The specification grade **Continuum 23 Architectural Linear LED Suspension Lighting** delivers continuous clean lines and clear light to commercial, hospitality and residential interior lighting applications. Our modern, slim profiles and stylish designs offer excellent illumination, exceptional performance and versatility in offices, classrooms, conference rooms, museums, retail outlets, hotels, restaurants, and more. The integrated LED Continuum is available in standard lengths of 2', 3', 4', 6' and 8'. The Continuum 20 can be joined together in seamless runs of any length.

PRODUCT FAMILY

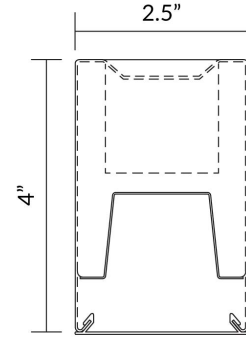
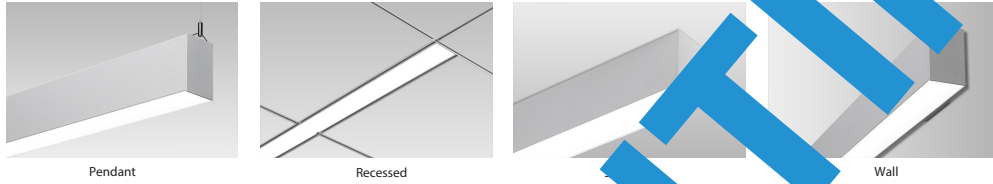
- 12100-23-P** Pendant Mount
- 12100-23-W** Wall Mount
- 12100-23-S** Surface Mount
- 12100-23-R** Recessed Mount

AVAILABLE LENGTHS

- 2FT, 3FT, 4FT, 6FT & 8FT**
- Continuous Run** | Consult Factory
- Custom Length** | Consult Factory

FEATURES

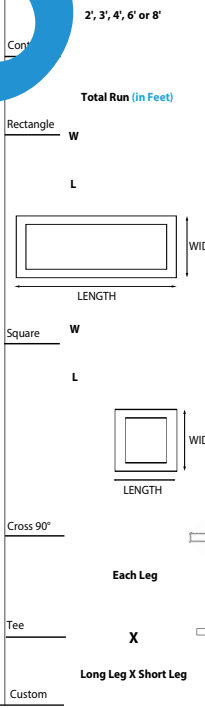
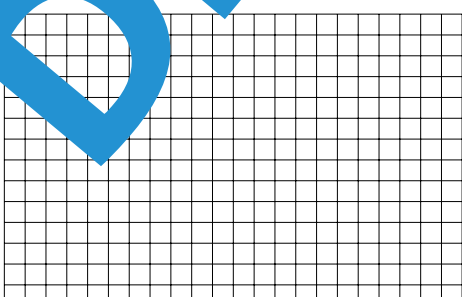
- Construction:** Die-Formed and welded 22-gauge cold rolled steel, painted finish with premium paint
- Continuous Run:** Full ability to tandem mount for continuous run application
- Indirect Mounting:** For Most Effective Indirect Lighting Result, Mount at No Less Than 18" from the Ceiling
- Custom Design:** Offered with Pre-Fabricated and Fully Illuminated Corners
- Lens:** Glare Free Snap In Frosted Acrylic for Even Distribution
- Voltage:** 50/60 Hz Constant Current 0-10V @ 120-277V, TRIAC & ELV @ 120V
- Dimming:** 0-10V, TRIAC (Forward-Phase), ELV (Reverse-Phase),
- Controls:** Lutron Vive, Lutron Ecosystem, Philips EasySense, Siemens Enlightend
- CRI:** 80+ & 90+
- Life:** +60,000 Reported L70 Hours @ 55°C
- Operating Temperature:** 4°F (-20°C) ~ 122°F (50°C).
- Warranty:** 5 Years Carefree for Parts & Components (Labor Not Included)
- Listings:** UL / CUL listed, DLC listed, ADA compliant,



ORDERING INFORMATION Example: (12100-23-P-2'-U18-S-4-30K-TRI-WH-AC48-1-8)

Model	Mounting	LED Downlight Per 4 Foot Sections	LED Uplight ¹ Per 4 Foot Sections	Shape	Color Temp	Dimming	Finish	Pendant Mounting	CRI	Options	Optional Controls
12100-23 2.5" x 4"	P Pendant	D18 18 Watts 2936 Lumens	Blank No Options	CR Continuous Run	27K 2700K	010 Standard 0-10V 5-Wire	WH Standard White (Matte) RAL# 9003	AC48 Standard 48" Adjustable Aircraft Cable	8 Standard 80+ CRI	Blank No Options	Blank No Controls
	W Wall	D27 27 Watts 3699 Lumens	Blank No Options	RC Recessed Run	30K 3000K	TRI TRIAC Forward Phase 2-Wire	BK Black (Matte) RAL# 9011	AC96 96" Adjustable Aircraft Cable	9 90+ CRI	EM5 5W Emergency Ballast	LV Lutron VIVE™ Wireless
	S Surface	D36 36 Watts 3964 Lumens	Blank No Options	RC Recessed Run	35K 3500K	ELV Electronic Low Voltage Reverse Phase 3-Wire	SL Silver (Matte) RAL# 9022	ST24 24" Stem		EM8 8W Emergency Ballast	LE Lutron Ecosystem™
	R Recessed T-Bar	D54 54 Watts 7999 Lumens	Blank No Options	+ Cross	40K 4000K		RAL Custom <small>Consult MFG</small>	ST48 48" Stem		EM16 16W Emergency Ballast	PH Philips EasySense™
	RF Recessed Flanged			T Tee	50K 5000K					OS Occupancy Sensor w/ Daylight Harvesting	EN Siemens Enlightened™
	RTL Recessed Trimless			CU Custom	50K 5000K					DS Daylight Dimming Photo Sensor	

Draw your custom shape here
Send us your idea to rfq@alconlighting.com






¹ Only available for Pendant and Wall Mount

Available Finishes

Standard

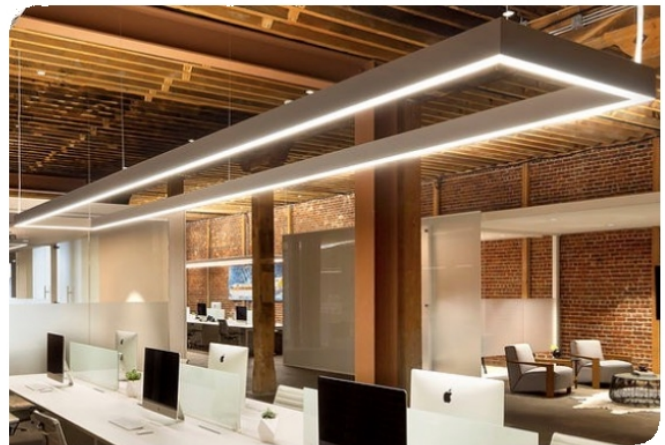
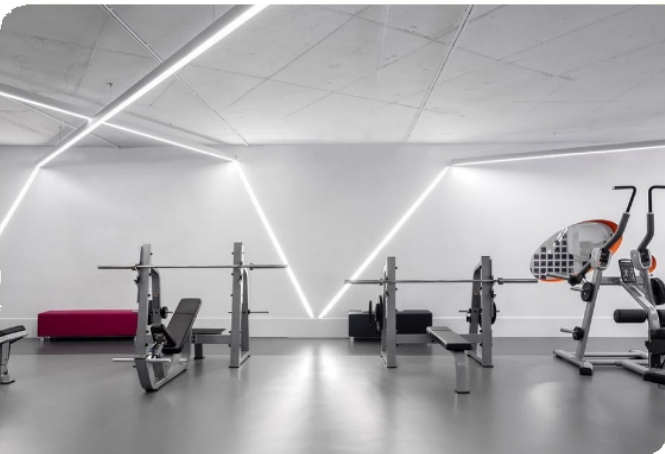
	01	White	RAL #9003
	02	Black	RAL #9011
	03	Silver	RAL #9022
	04	Crystal White	RAL #9010
	05	Natural Aluminum	RAL #7035
	06	Hampden	RAL #9001
	07	London	RAL #7044

Metropolitan

	08	Urban Native	RAL #8025
	09	Military Green	RAL #6011
	10	Carmin	RAL #8028
	11	Chocolate Spice	RAL #8017
	12	Asher Grey	RAL #7004
	13	Tech Grey	RAL #7016
	14	Slate	RAL #7031
	15	Mason	RAL #7039

Vibrant

	16	Violet Dreams	RAL #4006
	17	Sangria Sunset	RAL #2004
	18	Deep Pink	RAL #4010
	19	Ruby Red	RAL #3027
	20	Island Skye	RAL #6027
	21	Sophia	RAL #5015
	22	Antique Spring	RAL #6019
	23	Daisy	RAL #1018
	24	Gun Metal	RAL #7024



Controls

Smart Sensors	Protocol	Compatible Networks	Occupancy	Daylight	Temperature Reporting	Communication to Luminaire
enlighted	Enlighted RF	Enlighted RF	Integrated	Integrated	Yes	Wireless
LUTRON	EcoSystem	Quantum, Energi Savr Node, Energi TriPak	Enabled	Enabled	No	Wired
VIVE	Lutron Clear Connect*	Lutron Vive System Network	Enabled	Enabled	No	Wireless
PHILIPS	ZigBee HA	Philips	Enabled	Enabled	No	Wired

Controls Installed on the Fixture



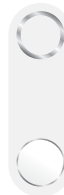
FCJS-010
Individual
Fixture Control

Fixture Will be Shipped LUTRON VIVE Enabled with LUTRON FCJS-010 0-10V Control Module Installed on the Fixture. Fixtures will be compatible with Lutron FC-SENSOR Occupancy/Daylight Sensor or FC-VSENSOR Vacancy/Daylight Sensor which can be Added in the Field for Remote Mounting. Fixture May be Controlled with any Vive control systems. Fixtures must be ordered with a 0-10V. Driver.



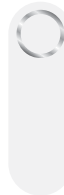
FCJS-ECO
Individual
Fixture Control

Fixture Will be Shipped LUTRON VIVE Enabled with LUTRON FCJS-ECO EcoSystem Control Module Control Module Installed on the Fixture. Fixtures will be compatible with Lutron FC-SENSOR Occupancy/Daylight Sensor or FC-VSENSOR Vacancy/Daylight Sensor which can be Added in the Field for Remote Mounting. Fixture May be Controlled with any Vive control systems. Fixtures must be ordered with a Lutron Driver.



DFCSJ-OEM-OCC

Fixture Will be Shipped LUTRON VIVE Enabled with DFCSJ-OEM-OCC* Vive Integral Fixture Control (with Sensing) Installed on the Fixture. Fixture May be Controlled with any Vive control systems. Fixtures must be ordered with a DMX or Lutron EcoSystem Driver



DFCSJ-OEM-RF

Fixture Will be Shipped LUTRON VIVE Enabled with LUTRON DFCSJ-OEM-RF* Vive Integral Fixture Control (RF Only) Installed on the Fixture. Fixture May be Controlled with any Vive control systems. Fixtures must be ordered with a DMX or Lutron EcoSystem Driver.

Controls Provided by Lutron



Vive Wireless Hub



DayLight
Sensor



Ceiling Mount
Occupancy/Daylight
Sensor



Ceiling Mount
Occupancy Sensor



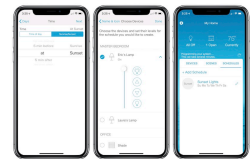
Pico
Remote



Wall Mount
Switch



Wall Mount
Occupancy Sensor



Lutron App

Controls



Fixture will be shipped with Leviton ZL027-N0W power control module installed on the fixture. Fixtures will be compatible with Leviton ZL00J-D0W sensor control module which can be added in the field for remote mounting. Fixture must be controlled with Leviton Intellect Keypad Room Controller, or Leviton Neuron App.



ZL027-N0W
Power control module



ZL00J-D0W
Sensor control module

Leviton Keypad



ZLDNK-1W



ZLDNK-2W



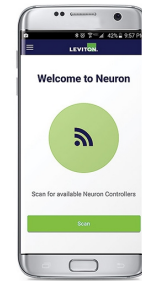
ZLDNK-4W



ZLDNK-8W

Intellect™ Keypad Room Controller (Required)

Leviton App



Neuron App



Philips EasySense sensors provide luminaire-level control with Occupancy sensing, Daylight harvesting, and Field task tuning.

Controls Installed on the Fixture



PHILIPS-XSR + SNS200

Fixture will be Shipped with EasySense SNS200 Sensor installed and PHILIPS-XSR driver. Fixture May Only be Controlled with Philips Field App or Wireless Switches.



SRB + SNS200

Fixture Will be Shipped with EasySense SNS200 Sensor installed and PHILIPS SRB Bridge. Fixture May Only be Controlled with Philips Field App or Wireless Switches or any 0-10V. Wall Box Dimmer.



Controls Provided by Philips



ZBT-S1AWH



ZBT-S2AWH

Ilumra Wireless Switches



PHILIPS-XSR + SNS200-CMP

Fixture will be Shipped Sensor Ready with PHILIPS-XSR driver and EasySense SNS200-CMP Sensor which is Included to be Remote Mounted. Fixture May Only be Controlled with Philips Field App or Wireless Switches



SRB + SNS200-CMP

Fixture Will be Shipped Sensor Ready with PHILIPS SRB Bridge and EasySense SNS200-CMP Sensor which is Included to be Remote Mounted. Fixture May Only be Controlled with Philips Field App or Wireless Switches or any 0-10V. Wall Box Dimmer.





SRB

Fixture will be Shipped Sensor Ready with SRB Bridge. Fixture will be Compatible with EasySense Sensor SNS200-CMP which can be Added in the Field for Remote Mounting. Fixture May Only be Controlled with Philips Field App or Wireless Switches or any 0-10V. Wall Box Dimmer.



Philips Field App

Compatible Dimmers

MFG	Triac	ELV	0-10
	TG-600P	DVELV-303P	NTSTV
	LG-600P	SELV-300P	NFTV
	TGCL-153P	MAELV-600	
	DV-600P	FAELV-500	
	DVCL-153P		
	S-603PG		
	CT-103P		
	S-600P		
	6161	IPE04	IP710-DLZ
	6633-P	VPE06-1LZ	
	6683		
	6631-2		
	IPI06-1LZ		

COLOR TEMPERATURE GUIDE



2700K	3000K	3500K	4000K	5000K
WARM WHITE	SOFT WHITE GLOW	NEUTRAL GLOW	DAYLIGHT GLOW	CRYSTAL WHITE GLOW
friendly personal intimate	soft warm pleasing	sociable inviting non-threatening	neat clean efficient	bright cool alert
HOMES LIBRARIES RESTAURANTS	HOMES HOTEL ROOMS LOBBIES RETAIL STORES	EXECUTIVE OFFICES RECEPTION AREAS SUPERMARKETS	OFFICES CLASSROOMS MASS MERCHANDISERS SHOWROOMS	GRAPHICS INDUSTRY HOSPITALS GALLERIES BEAUTY SALONS

Photometrics

Direct

12100-20-D27-S-4

Illuminance at a Distance

	Center Beam FC	Beam Width
1.7FT	555 FC	3.9 FT 3.1 FT
3.3FT	147 FC	7.6 FT 6.1 FT
5.0FT	64.1 FC	11.6 FT 9.2 FT
6.7FT	35.7 FC	15.5 FT 12.3 FT
8.3FT	23.3 FC	19.2 FT 15.2 FT
10.0FT	16.0 FC	23.2 FT 18.4 FT

- Vert. Spread: 98.4°
- Horiz. Spread: 85.1°

12100-20-D27-S-8

Illuminance at a Distance

	Center Beam FC	Beam Width
1.7FT	1,117 FC	3.9 FT 3.1 FT
3.3FT	296 FC	7.6 FT 6.1 FT
5.0FT	129 FC	11.6 FT 9.2 FT
6.7FT	71.9 FC	15.5 FT 12.3 FT
8.3FT	46.8 FC	19.2 FT 15.2 FT
10.0FT	32.3 FC	23.2 FT 18.4 FT

- Vert. Spread: 98.4°
- Horiz. Spread: 85.1°

Direct/Indirect

12100-20-D27-U27-S-4

Illuminance at a Distance

	Center Beam FC	Beam Width
1.7FT	470 FC	3.9 FT 3.3 FT
3.3FT	296 FC	7.6 FT 6.5 FT
5.0FT	129 FC	11.5 FT 9.8 FT
6.7FT	71.9 FC	15.5 FT 13.2 FT
8.3FT	46.8 FC	19.1 FT 16.3 FT
10.0FT	32.3 FC	23.1 FT 19.7 FT

- Vert. Spread: 98.1°
- Horiz. Spread: 89.0°

12100-20-D27-U27-S-8

Illuminance at a Distance

	Center Beam FC	Beam Width
1.7FT	940 FC	3.9 FT 3.3 FT
3.3FT	249 FC	7.6 FT 6.5 FT
5.0FT	109 FC	11.5 FT 9.8 FT
6.7FT	60.5 FC	15.5 FT 13.2 FT
8.3FT	39.4 FC	19.1 FT 16.3 FT
10.0FT	27.2 FC	23.1 FT 19.7 FT

- Vert. Spread: 98.1°
- Horiz. Spread: 89.0°

12100-20-D54-S-4

Illuminance at a Distance

	Center Beam FC	Beam Width
1.7FT	993 FC	3.9 FT 3.1 FT
3.3FT	263 FC	7.6 FT 6.1 FT
5.0FT	115 FC	11.6 FT 9.2 FT
6.7FT	63.9 FC	15.5 FT 12.3 FT
8.3FT	41.6 FC	19.2 FT 15.2 FT
10.0FT	28.7 FC	23.2 FT 18.4 FT

- Vert. Spread: 98.4°
- Horiz. Spread: 85.1°

12100-20-D54-S-8

Illuminance at a Distance

	Center Beam FC	Beam Width
1.7FT	1,986 FC	3.9 FT 3.1 FT
3.3FT	527 FC	7.6 FT 6.1 FT
5.0FT	230 FC	11.6 FT 9.2 FT
6.7FT	128 FC	15.5 FT 12.3 FT
8.3FT	83.3 FC	19.2 FT 15.2 FT
10.0FT	54.7 FC	23.2 FT 18.4 FT

- Vert. Spread: 98.4°
- Horiz. Spread: 85.1°

12100-20-D54-U18-S-4

Illuminance at a Distance

	Center Beam FC	Beam Width
1.7FT	982 FC	3.8 FT 3.1 FT
3.3FT	261 FC	7.4 FT 5.9 FT
5.0FT	114 FC	11.3 FT 9.0 FT
6.7FT	63.2 FC	15.1 FT 12.1 FT
8.3FT	41.2 FC	18.7 FT 14.9 FT
10.0FT	28.4 FC	22.6 FT 18.0 FT

- Vert. Spread: 96.9°
- Horiz. Spread: 83.9°

12100-20-D54-U18-S-8

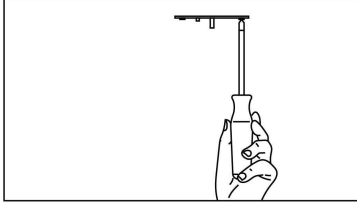
Illuminance at a Distance

	Center Beam FC	Beam Width
1.7FT	1,965 FC	3.8 FT 3.1 FT
3.3FT	521 FC	7.4 FT 5.9 FT
5.0FT	227 FC	11.3 FT 9.0 FT
6.7FT	126 FC	15.1 FT 12.1 FT
8.3FT	82.4 FC	18.7 FT 14.9 FT
10.0FT	56.8 FC	22.6 FT 18.0 FT

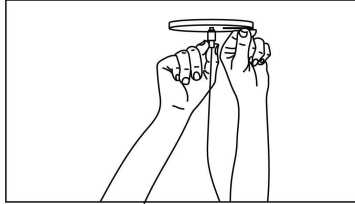
- Vert. Spread: 96.9°
- Horiz. Spread: 83.9°

Pendant Installation

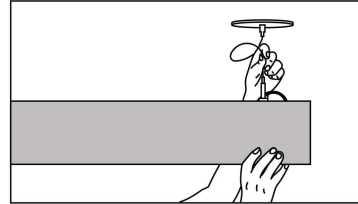
A simple design and adjustable components provide a flexible and hassle-free experience when installing the Continuum Series™.



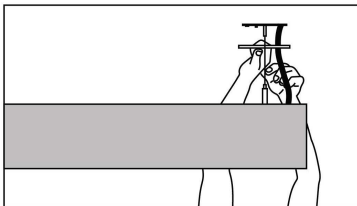
Step 1: Secure cross brackets to junction boxes for both power and non power mounting points.



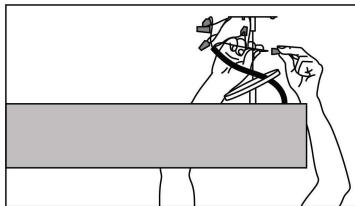
Step 2: Secure canopy with power canopy coupler (Power Feed Mount) & secure canopy with cable terminal (Non Power Feed Mount).



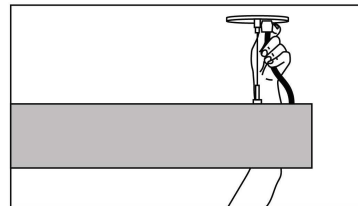
Step 3: Feed aircraft cable into cable grippers, adjust height and level luminaire.



Step 4: Unscrew outer coupler to allow access to junction box. Feed power cord through canopy.



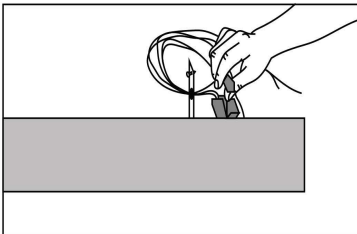
Step 5: Secure canopy back in place with outer coupler.



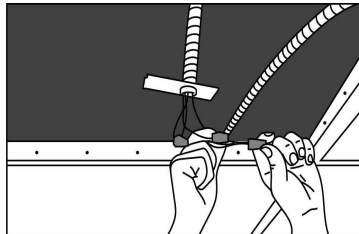
Step 6: Snap strain relief around power cord. Press into canopy.

Recessed T-Bar Installation

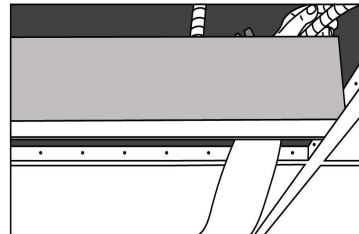
The T-Bar variant of the Continuum Series™ is built to easily install and integrate into the standard grid ceilings in modern interior spaces. The luminaire's flange conveniently hides any imperfections in cuts to the tile, creating a clean, seamless look.



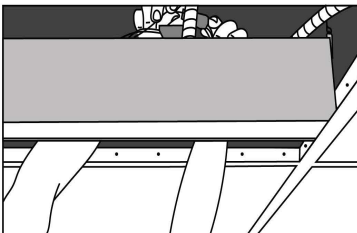
Step 1: Shut off power. Remove ceiling tile from desired light fixture location. Remove knockout plate. Remove pigtail.



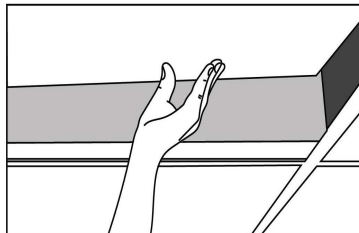
Step 2: Mount knockout plate to flex conduit. Connect pigtail to conduit wires.



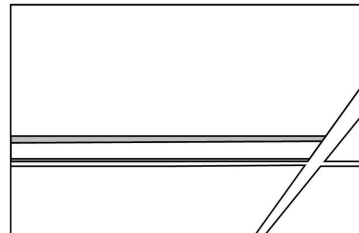
Step 3: Lay luminaire in grid at desired position. Secure fixture to structure above using structural wire (by others) via holes in the end plates.



Step 4: Connect pigtail disconnects to luminaire disconnects. Insert wires into housing. Insert knockout plate and fasten using screw provided.



Step 5: Cut tile to fit beside luminaire and install on both sides of the luminaire.



Step 6: Power can now be turned on.