

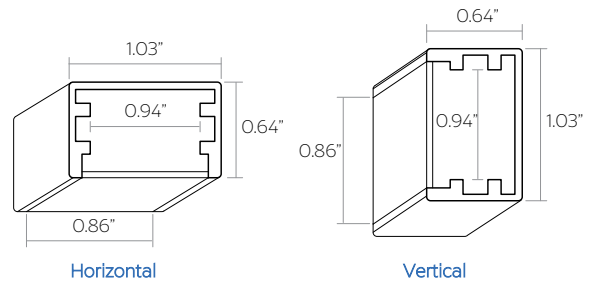
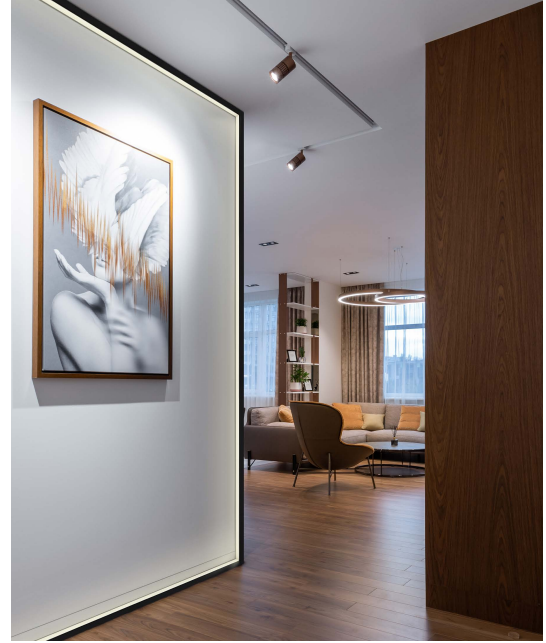
Project Name: \_\_\_\_\_ Type: \_\_\_\_\_ Quantity: \_\_\_\_\_

### INTENDED USE

This specification-grade slim LED linear pendant delivers continuous clean High-CRI light and modern lines to commercial, hospitality and residential interior lighting projects. Our modern, slim profiles and stylish low-voltage linear suspension lights offer direct lighting for a variety of applications including; offices, classrooms, conference rooms, museums, retail outlets, hotels, restaurants and more.

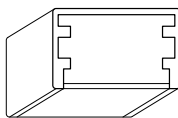
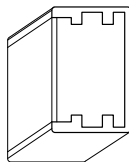
### FEATURES

- Construction: Durable military grade aluminum, field cuttable can be installed in any drywall thickness
- LED Driver: Remote transformer is provided home run required at Every 16'
- Lens: Glare-free snap in frosted acrylic for even distribution
- Lumens: 698 Lumen per foot
- Wattage: 6.6 Wattage per foot
- CRI: 90+
- Voltage: 24V LED Fixture, 100-277V LED Driver
- Remote Driver: Dimmable 4-in-1 Triac, ELV, MLV & 0-10V
- Life: 50,000 Hours
- Operating Temperature: -40°F ~ 140°F (-40°C ~ 60°C)
- Beam Angle: 120°
- Warranty: 5 Years Carefree for Parts & Components (Labor Not Included)
- Listings: cUL / UL Listed, Title 24 JA8 Certified, IP45 (LED component only)



### ORDERING INFORMATION EXAMPLE: (12100-13-S4-35K-SL-FR)

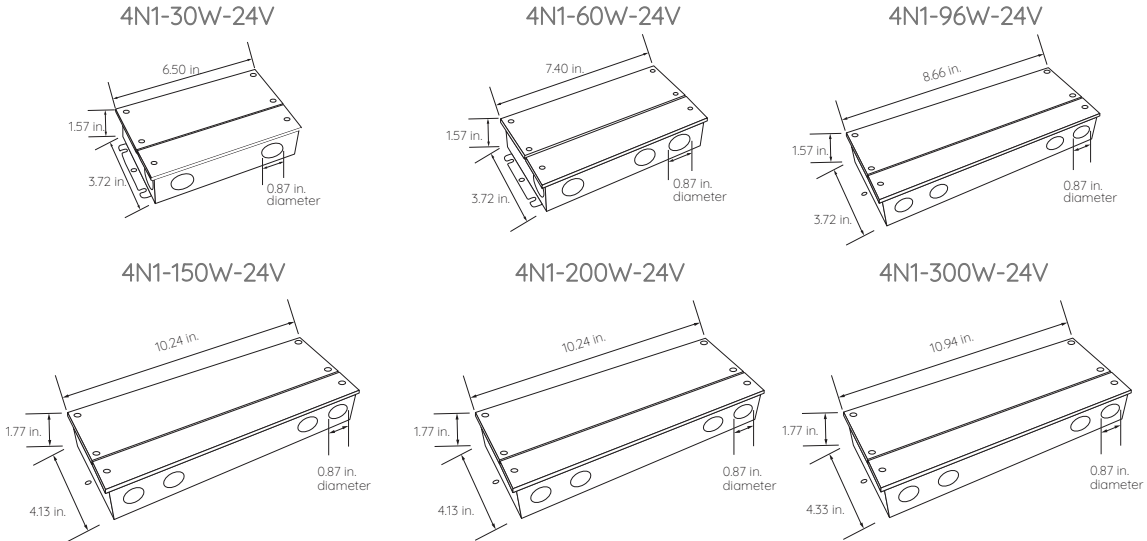
Model	Shape	Color Temp	Finish	Lens
12100-13-S	Sx Single Run x = 2', 3', 4', 6' or 8'	27K 2700K	SL Silver Anodized	FR Frosted
		30K 3000K	BK Black Anodized	BK <sup>1</sup> Black
	CRx Continuous Run x = Length in feet	30K 3000K	XXXX Custom Finish	
		40K 4000K	Replace XXXX with RAL#	
		50K 5000K		
SQVxx	Square Vertical xx = Width & Length			
RCVxx	Rectangle Vertical xx = Width & Length			
SQHxx	Square Horizontal xx = Width & Length			
RCHxx	Rectangle Horizontal xx = Width & Length			



<sup>1</sup> The cover has a matte black surface that turns white when the light is turned on.





## INTENDED USE



## AVAILABLE FINISHES

### Standard


	Silver Anodized	
	Black Anodized	

Set up fee and longer lead time will be applied on non-standard finishes.

### Metropolitan

	Silver	RAL #9022
	Asher Grey	RAL #7004
	Mason	RAL #7039
	Slate	RAL #7031
	Tech Grey	RAL #7016
	Chocolate Spice	RAL #8017
	Urban Native	RAL #8025
	Carmin	RAL #8028
	Reseda Green	RAL #6011

### Vibrant

	Violet Dreams	RAL #4006
	Purple Red	RAL #3004
	Carmine Red	RAL #3002
	Rose	RAL #3017
	Pure Orange	RAL #2004
	Traffic Yellow	RAL #1023
	Daisy	RAL #1018
	Antique Spring	RAL #6019
	Island Skye	RAL #6027
	Sky Blue	RAL #5015

## COLOR TEMPERATURE GUIDE



**2700K**

WARM  
WHITE

friendly  
personal  
intimate

HOMES  
LIBRARIES  
RESTAURANTS



**3000K**

SOFT WHITE  
GLOW

soft  
warm  
pleasing

HOMES  
HOTEL ROOMS  
LOBBIES  
RETAIL STORES



**3500K**

NEUTRAL  
GLOW

sociable  
inviting  
non-threatening

EXECUTIVE OFFICES  
RECEPTION AREAS  
SUPERMARKETS



**4000K**

COOL WHITE  
GLOW

neat  
clean  
efficient

OFFICES  
CLASSROOMS  
MASS MERCHANDISERS  
SHOWROOMS



**5000K**

DAYLIGHT  
GLOW

bright  
cool  
alert

GRAPHICS INDUSTRY  
HOSPITALS  
GALLERIES  
BEAUTY SALONS



**COMPATIBLE DIMMERS**

BRAND	MODEL	INPUT	RANGE	MODEL	INPUT	RANGE
LUTRON®	<b>153PR-WH</b>	100-130V	0-100%	DZ6HD	100-130V	22-100%
	<b>DVCL-153PR-WH</b>	100-130V	0-100%	DV-600PR-BL	100-130V	0-100%
	<b>DVWCL-153PH-LA</b>	100-130V	0-100%	DV-600PR-WH	100-130V	0-100%
	<b>CTCL-153PDH-LA</b>	100-130V	0-100%	PD-6WCL	100-130V	20-100%
	<b>TGCL-153PR-WH</b>	100-130V	0-100%	PD-5NE-WH	100-130V	18-100%
	<b>TGCL-153PH-WH</b>	100-130V	0-100%	NTLV-600-277-WH	100-130V	1-100%
	<b>MACL-153MH-LA</b>	100-130V	20-100%	ST-12P-277	100-130V	12-100%
	<b>CT-600PR-IV</b>	100-130V	0-100%	NTF-10-277	100-130V	1-100%
	<b>CT-600PR-WH</b>	100-130V	0-100%	SELV-300P	100-130V	15-100%
	<b>CT-103PR-WH</b>	100-130V	2-100%	MSCELV-600M	100-130V	0-100%
	<b>MIR-600M</b>	100-130V	2-100%	MEF2-6ELV-120	100-130V	0-100%
	<b>TG-600PR-LA</b>	100-130V	4-100%	DVELV-300P	100-130V	15-100%
	<b>TG-600PR-IV</b>	100-130V	0-100%	S-600PR-WH	100-130V	0-100%
	<b>TG-600PR-WH</b>	100-130V	0-100%	MRF2-6ND-120-AL	100-130V	0-100%
	<b>TG-10PR-WH</b>	100-130V	0-100%	MRF2-6CL-GR	100-130V	15-100%

LEVITON	<b>VPI06-1LZ</b>	100-130V	15-100%	6672	100-130V	20-100%
	<b>TTI06-1LZ</b>	100-130V	1-100%	6683	100-130V	10-100%
	<b>IPL06</b>	100-130V	15-100%	6602	100-130V	0-100%
	<b>DZ6HD</b>	100-130V	17-100%	AWSMT-EAW	100-130V	0-100%
	<b>TBL03</b>	100-130V	15-100%	AWSMT-EAW	277V	0-100%
	<b>6674</b>	100-130V	16-100%			

LEGRAND	<b>RHCL453PNICCV6</b>	100-130V	6-100%			
	<b>WSCL450TCCCV4</b>	100-130V	11-100%			
	<b>LSCL453PLACCV4</b>	100-130V	11-100%			

CRESTRON	<b>CLW-DELVEX-P-W-S</b>	100-130V	11-100%			
----------	-------------------------	----------	---------	--	--	--