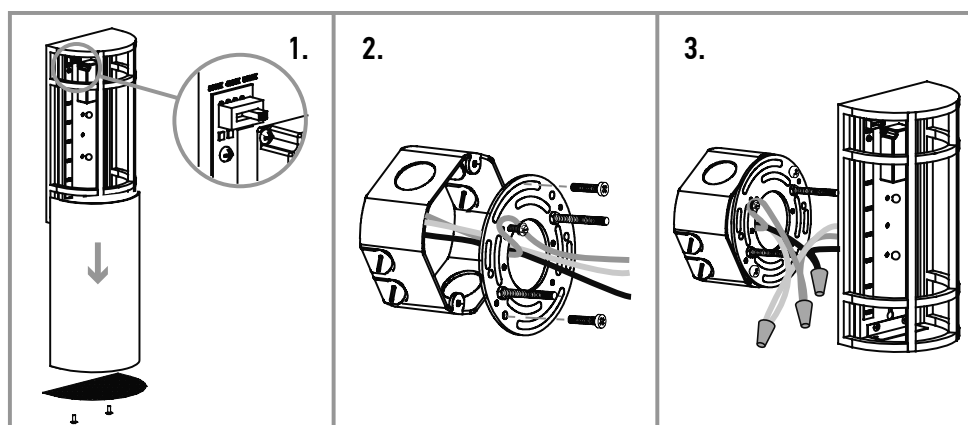


## INSTALLATION INSTRUCTION

### INSTALLATION FOR 12" & 18"

1. Remove the bottom cover and pull out the lens. Choose needed color temperature by adjusting the switch position.
2. Align the fixture slots of the mounting bracket and fix the fixture screws on the mounting bracket using fixture screw nuts. Align the mounting slots of the mounting bracket with the holes on the outlet box and attach it with screws.
3. Connect the wires: Black to Black, White to White, Green to Green. Secure the connection with wire nuts. Place the fixture screws in the appropriate holes in the fixture and secure it with a decorative cap nut. Put the lens back in and attach the bottom cover with screws. For outdoor locations it is recommended to use silicone (not included).



### INSTALLATION FOR 24"

1. Remove the bottom cover and pull out the lens. Choose needed color temperature by adjusting the switch position.
2. Align the fixture slots of the mounting plate and fix the fixture screws on the mounting plate using fixture screw nuts. Align the mounting slots of the mounting plate with holes of the outlet box and attach it with screws.
3. Connect the wires: Black to Black, White to White, Green to Green. Secure the connection with wire nuts. Place the fixture screws in the appropriate holes in the fixture and secure it with a decorative cap nut. Put the lens back in and attach the bottom cover with screws. For outdoor locations it is recommended to use silicone (not included).

