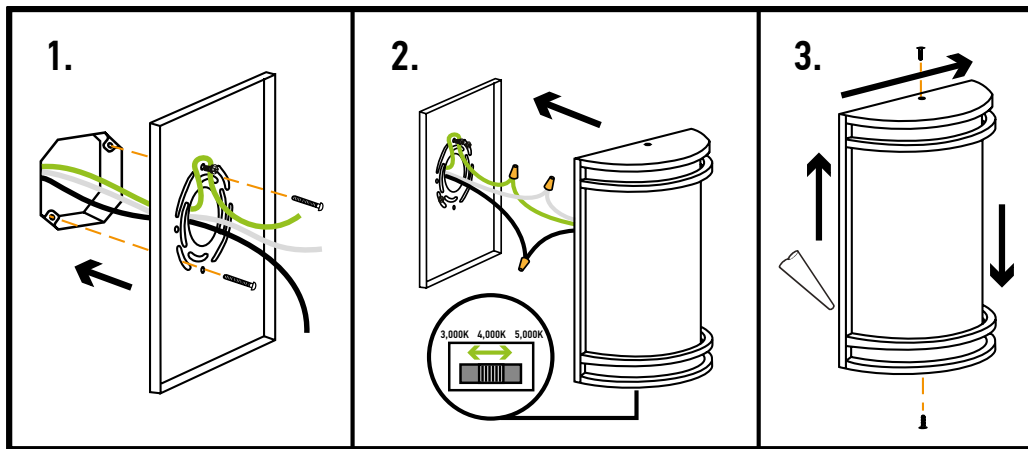


INSTALLATION INSTRUCTIONS

11254-T (Without Photocell)

1. Pull the power supply wires out from the outlet box and mount the Wall plate to outlet box using Mounting screws.
2. Connect the wires: Black to Black, White to White, Green to Green. Secure the connection with Wire Nuts. Tuck all the wires back into the outlet box. Choose needed color temperature by adjusting the switch position.
3. Attach the Fixture back plate firmly to Wall plate and mount against the wall. Secure in place with Side mount screws. For Outdoor locations it is recommended to use silicone (not included) as shown on a picture.



11254-N (With Photocell)

1. Pull the power supply wires out from the outlet box and mount the Wall plate to outlet box using Mounting screws.
 2. Connect the wires: Black to Black, White to White, Green to Green. Secure the connection with Wire Nuts. Tuck all the wires back into the outlet box. Attach the led module to the wall plate using two screws. Choose needed color temperature by adjusting the switch position.
 3. Link the photocell connector with led module connector. Attach the lens to the wall plate. Secure in place with side mount screws.
- For Outdoor locations it is recommended to use silicone (not included).

