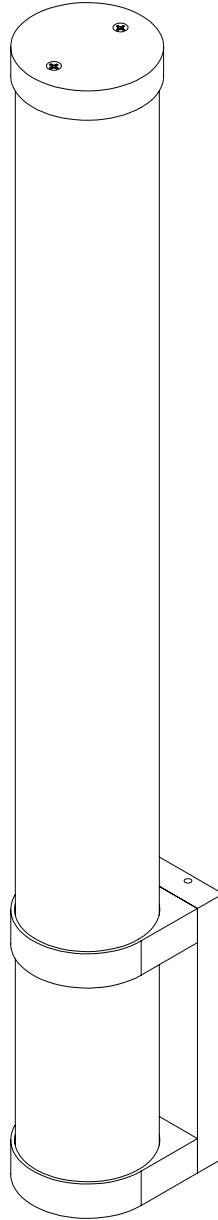


---

**11250  
INSTALLATION  
INSTRUCTIONS**



**Please read all instructions prior to installation and keep for future reference!**

1. Product to be installed by a qualified electrician.
2. Prior to installation ensure power is off at fuse box to prevent electrical shock.
3. Use only with Class 2 LED Driver. *Utiliser seulement avec la classe 2 unite d'alimentation electrique.*
4. Suitable for damp location installations.



**1**

1.1 From the back of the fixture, loosen the 4 set screws on the fixture body. Then carefully remove the mounting plate.

**2**

2.1 Connect the white (neutral) & black (hot) LED driver wires to the white & black power wires (120VAC).

2.2 Place LED driver into the junction box.

**3**

3.1 Insert the low voltage wires through the center of the mounting plate. Followed by lining up the mounting plate to the junction box and secure using the provided screws.

3.2 Connect the ground in accordance with local electrical codes.

**4**

4.1 Connect +24 VDC red wire from the fixture to the LED driver +24 VDC red wire with a wire nut. Connect -24VDC black wire from the fixture to LED driver -24VDC black wire with a wire nut.

**Please read all instructions prior to installation and keep for future reference!**

1. Product to be installed by a qualified electrician.
2. Prior to installation ensure power is off at fuse box to prevent electrical shock.
3. Use only with Class 2 LED Driver. *Utiliser seulement avec la classe 2 unite d'alimentation electrique.*
4. Suitable for damp location installations.

