

FIXTURE SPECIFICATIONS

INTENDED USE

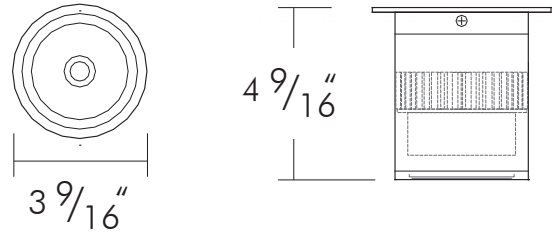
Our direct architectural ceiling downlight provides versatile, low-glare, cylindrical lighting. This product is for either indoor or outdoor commercial or retail use. The diecast aluminum fixture with tempered glass lens and silicone ring can be used to accent, enhance and improve area safety and security. Exclusively designed for downlighting.

PRODUCT FAMILY

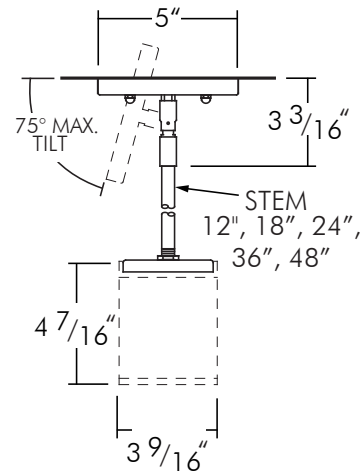
- 11235-ADJ** Cylinder Adjustable
- 11235-DIR** Cylinder Direct
- 11223-DIR** Square Direct

FEATURES

- Construction:** Round One Piece High Grade Aluminum Extrusion with Die Cast Aluminum Top Plate Tamper Resistant
- Light Engine:** LED Chip-On-Board
- Lens:** Clear Tempered Glass and Silicone O-Ring
- Reflector:** Glare-Free, One piece, Heavy Gauge Aluminum
- Mounting:** Includes Bracket for Installation Directly to a 3-1/2" or 4" octagonal electrical junction-box
- Voltage:** 120V (120V-277V Available for Dimming)
- CRI:** 84+
- Dimming:** Universal Dimming System Compatible with 2-Wire TRIAC, 3-Wire ELV, and 5-Wire 0-10V Dimmers
- Life:** L70 - 50,000 Hours
- Emergency:** 90 Minutes Minimum, Remote Test Switch, Plate Cover, Junction Box Included
- Listing:** ETL/cETL Listed Suitable for Wet Location. Assembled in the US (IP65)
- Electrical:** Electronic Direct Current Class 2 driver
- Warranty:** 5 Years Carefree for Parts and Components (Labor not included). We recommend the use of surge protectors on the power entering LED Housings. Surge damage is not covered by warranty.
- Compliance:** Dark Sky Compliant when fixture is pointing downward.



Stem Mount Option



Alcon 11235-DIR LED Cylinder Ceiling Light

ORDERING INFORMATION Example: (11235-DIR-S-L15-B60-UNI-40K-WH-EM)

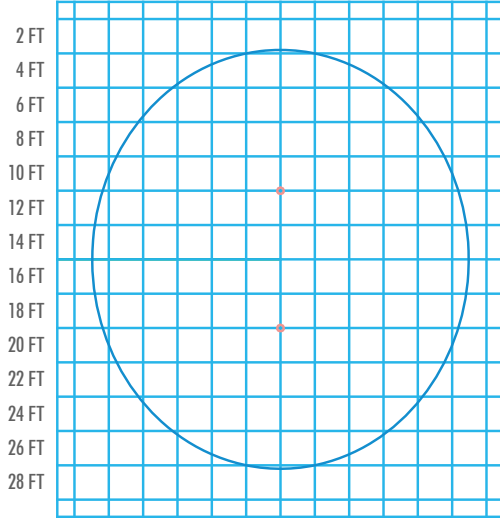
Model	Mount	Lumen	Beam Spread	Dimming	Color Temp	Finish	Options
11235-DIR Pavo-Cylinder	S Surface <small>Standard</small>	L10 1000 lm (15W) <small>Standard</small>	B2 2° Narrow Spot	ND <small>Standard</small> Non-Dimming (120V)	27K 2700K	WH White	EM Remote Emergency
	ST12 12" Stem Mount	L15 1500 lm (22W)	B10 10° Spot	UNI Universal (120V / 277V)	30K 3000K	BK Black	BB Backup Battery
	ST18 18" Stem Mount		B20 20° Wide Spot		35K 3500K	SL Silver	JB Integral Junction Box
	ST24 24" Stem Mount		B45 45° Flood		40K 4000K <small>Standard</small>		
	ST36 36" Stem Mount		B60 60° Wide Flood <small>Standard</small>		50K 5000K		
	ST48 48" Stem Mount		WW Wall Wash				



ISO FOOTCANDLE PLOTS - Two Fixture

11235-DIR-L10-B60-UNI-40K-BK

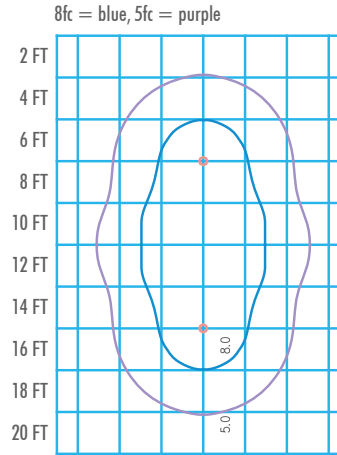
33 Ft Mtg Ht. 8 Ft O.C. Spacing



1 Grid = 2 FT
26 FT x 30 FT Surface Area to achieve 80% Reflectance Value on Ceiling
(Avg) 1.1 FC

11235-DIR-L10-B60-UNI-40K-BK

10 Ft Mtg Ht. 8 Ft O.C. Spacing



8fc = blue, 5fc = purple
1 Grid = 2 FT
14 FT x 20 FT Surface Area to achieve 80% Reflectance Value on Ceiling
(Avg) 5.6 FC

11235-DIR-L10-B60-UNI-40K-BK

1000lm - Wide Flood - 4000K

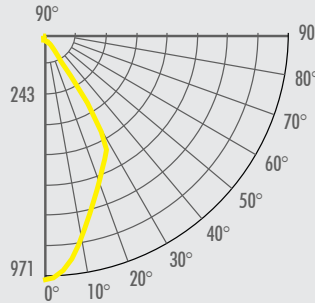
CANDELA TABULATION

FOOTCANDLE DISTRIBUTION

System Power	:14.5W
Test Date	:11/15/2017
Beam Angle 50%	:62.7°
Field Angle 10%	:83.4°
Color Temperature	:3997K
CRI	:85.4
R9 Value	:28.5
Lumens Delivered	:863lm
CBCP	:971cd
Power Factor	:0.98

Multipliers	
5600K	1.40
5000K	1.25
3500K	0.87
3000K	0.75
2700K	0.67
2500K	0.62
1700K	0.42

CRI	
80CRI (Blank)	:0.94
90CRI (-C90)	:1.05
97CRI (-C97)	:1.14



Height	Beam Diameter	FC
8.0'	9.7'	15.2
12.0'	14.6'	6.7
14.0'	17.1'	5.0
16.0'	19.5'	3.8
18.0'	21.9'	3.0

11235-DIR-L10-B10-UNI-40K-BK

1000lm - Narrow Spot - 4000K

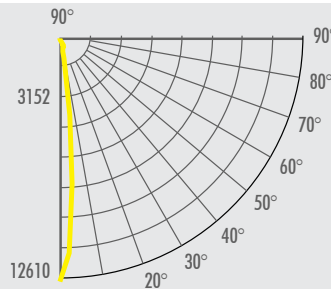
CANDELA TABULATION

FOOTCANDLE DISTRIBUTION

System Power	:14.5W
Test Date	:11/15/2017
Beam Angle 50%	:11.7°
Field Angle 10%	:23.4°
Color Temperature	:4012K
CRI	:85.4
R9 Value	:28.7
Lumens Delivered	:1079lm
CBCP	:12610cd
Power Factor	:0.98

Multipliers	
5600K	1.37
5000K	1.23
3500K	0.86
3000K	0.73
2700K	0.66
2500K	0.61
1700K	0.42

CRI	
80CRI (Blank)	:0.94
90CRI (-C90)	:1.05
97CRI (-C97)	:1.14



Height	Beam Diameter	FC
10.0'	2.0'	126.1
20.0'	4.1'	31.5
30.0'	6.1'	14.0
40.0'	8.2'	7.9
50.0'	10.2'	5.0

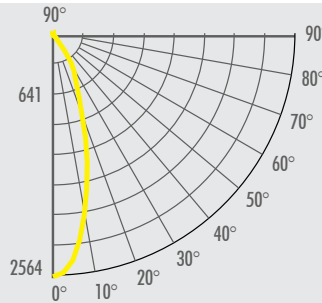
11235-DIR-L15-B45-UNI-40K-BK

1000lm - Flood - 4000K

CANDELA TABULATION
FOOTCANDLE DISTRIBUTION

System Power	:14.5W
Test Date	:11/15/2017
Beam Angle 50%	:32.4°
Field Angle 10%	:68.7°
Color Temperature	:4016K
CRI	:85.4
R9 Value	:28.4
Lumens Delivered	:1068lm
CBCP	:2564cd
Power Factor	:0.98

Multipliers	
5600K	1.37
5000K	1.22
3500K	0.85
3000K	0.73
2700K	0.66
2500K	0.61
1700K	0.42
CRI	
80CRI (Blank)	:0.94
90CRI (-C90)	:1.05
97CRI (-C97)	:1.14



Height	Beam Diameter	FC
8.0'	4.6'	40.1
12.0'	7.0'	17.8
16.0'	9.3'	10.0
20.0'	11.6'	6.4
25.0'	14.5'	4.1

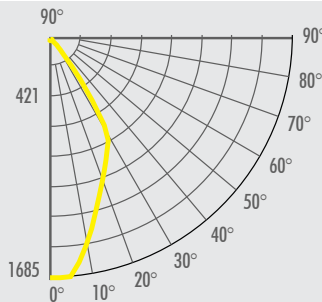
11235-DIR-L15-B45-UNI-40K-BK

1500lm - Wide Flood - 4000K

CANDELA TABULATION
FOOTCANDLE DISTRIBUTION

System Power	:20.1W
Test Date	:11/15/2017
Beam Angle 50%	:58.5°
Field Angle 10%	:82.7°
Color Temperature	:4061K
CRI	:85.4
R9 Value	:24.8
Lumens Delivered	:1418lm
CBCP	:1685cd
Power Factor	:1.00

Multipliers	
5600K	1.38
5000K	1.23
3500K	0.86
3000K	0.74
2700K	0.66
2500K	0.62
1700K	0.42
CRI	
80CRI (Blank)	:0.94
90CRI (-C90)	:1.05
97CRI (-C97)	:1.14



Height	Beam Diameter	FC
8.0'	9.0'	26.3
10.0'	13.4'	11.7
20.0'	15.7'	8.6
40.0'	17.9'	6.6
60.0'	20.2'	5.2

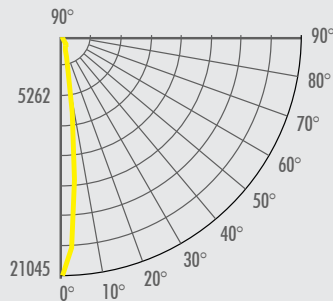
11235-DIR-L15-B10-UNI-40K-BK

1500lm - Narrow Spot - 4000K

CANDELA TABULATION
FOOTCANDLE DISTRIBUTION

System Power	:20.1W
Test Date	:11/15/2017
Beam Angle 50%	:11.7°
Field Angle 10%	:23.4°
Color Temperature	:4076K
CRI	:85.4
R9 Value	:28.7
Lumens Delivered	:1730lm
CBCP	:20228cd
Power Factor	:1.00

Multipliers	
5600K	1.37
5000K	1.23
3500K	0.86
3000K	0.73
2700K	0.66
2500K	0.61
1700K	0.42
CRI	
80CRI (Blank)	:0.94
90CRI (-C90)	:1.05
97CRI (-C97)	:1.14



Height	Beam Diameter	FC
8.0'	1.6'	316.1
10.0'	2.0'	202.3
20.0'	4.1'	50.6
40.0'	8.2'	12.6
60.0'	12.3'	5.6

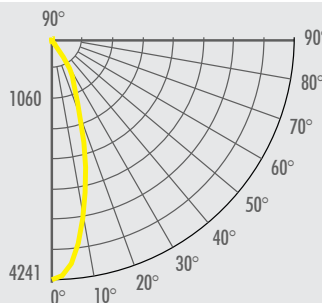
11235-DIR-L15-B45-UNI-40K-BK

1500lm - Flood - 4000K

CANDELA TABULATION
FOOTCANDLE DISTRIBUTION

System Power	:20.1W
Test Date	:11/15/2017
Beam Angle 50%	:32.4°
Field Angle 10%	:68.7°
Color Temperature	:4080K
CRI	:85.4
R9 Value	:28.4
Lumens Delivered	:1714lm
CBCP	:4115cd
Power Factor	:1.00

Multipliers	
5600K	1.37
5000K	1.22
3500K	0.85
3000K	0.73
2700K	0.66
2500K	0.61
1700K	0.42
CRI	
80CRI (Blank)	:0.94
90CRI (-C90)	:1.05
97CRI (-C97)	:1.14



Height	Beam Diameter	FC
8.0'	4.6'	64.3
10.0'	7.0'	28.6
20.0'	9.3'	16.1
40.0'	11.6'	10.3
60.0'	14.5'	6.6

COLOR TEMPERATURE GUIDE

