

Project Name: \_\_\_\_\_ Type: \_\_\_\_\_ Quantity: \_\_\_\_\_

## INTENDED USE

Built with a Black aluminum housing, our 2x2 LED recessed fixture features sound absorbing acoustic felt ideal for spaces that will benefit from reduced noise. The 11166 can be ordered in a variety of ways: as a non-lit, acoustic felt only product that drops from the ceiling, a LED lit product with acoustic felts that is recessed into the ceiling, an a LED only product. This product can be customized in a number of ways to suit open offices, lobbies and reception areas and corridors, and other commercial interiors.

## PRODUCT FAMILY

[11166](#): Non-Lit Sound Absorbing Acoustics Fixture

[11166-P](#): LED Pendant with Sound Absorbing Acoustics

[11166-AD](#): LED Acrylic Drop Light Fixture

## FEATURES

**Construction:** Sound absorbing acoustic felt is 100% virgin polyester and 0.5" thick. Material rated for NRC (Noise Reduction Coefficient) of 0.90.

**Wattage & Color Temperature Switch:** Features Field adjustable Wattage and Color temp switch capable of switching wattages from 25 to 40 Watts and color temperatures of 35K to 50K.

**Lens:** Frosted acrylic diffuser

**Voltage:** 120-277V

**Life:** 50,000 Hours

**Warranty:** 5 Years carefree for parts & components (labor not included)

**Listings:** cULus, DLC, ARRA compliant, BAA compliant



RC (Recessed)

LED	Watts	Color Temp	Lumen Output
Wattage & Color Temperature Selectable	40W	3500K	3828lm
		4000K	3828lm
		5000K	3897lm
	30W	3500K	2949lm
		4000K	2975lm
		5000K	3001lm
Fixed Color Temperature	25W	3500K	2523lm
		4000K	2544lm
		5000K	2566lm
Fixed Color Temperature	36W	3500K	4428lm
		4000K	4536lm



## ORDERING INFORMATION Example: (11166-2DR-PW-RT-CTS-010)

Model	Size	Acoustic Felt Finish	Mounting	Color Temperature	Dimming	Options
11166-R	1 1" Recessed LED Flat Panel	PW Pewter	RT Recessed T-bar	CTS <sup>1</sup> Color Temperature Switch 35K / 40K / 50K	O10 <sup>2</sup> 0-10V Dimming (120-277V)	OS Bi-Level Occupancy Sensor
	2 2" Recessed LED Flat Panel	SL Slate	FK Flange Kit for Hard Ceiling	35K 3500K	ELV <sup>2</sup> ELV Dimming (120-277V)	EM8 8W Emergency Back-Up Battery
	4 4" Recessed LED Flat Panel	XX Custom premium colors (Specify from chart on page 2)		40K 4000K	TRIAC TRIAC Dimming (120V Only)	EM16 16W Emergency Back-Up Battery
	6 6" Recessed LED Flat Panel					EM20 20W Emergency Back-Up Battery

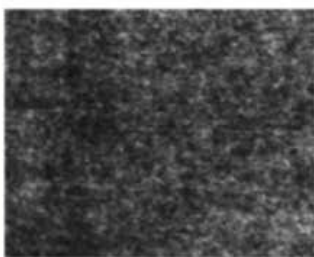
<sup>1</sup> Only compatible with 0-10V dimming  
<sup>2</sup> ELV option is only available with 35K or 40K

## AVAILABLE FINISHES

### STANDARD OPTIONS



**PW: PEWTER**



**SL: SLATE**

### PREMIUM OPTIONS



**TR: TAR**



**MD: MANDARIN**



**OC: OCHRE**



**GR: GRASS**



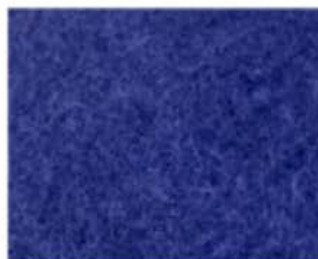
**FO: FROST**



**EC: ECRU**



**BR: BARK**



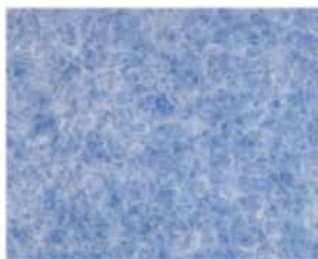
**CB: COBALT**



**LN: LINEN**



**SK: SKY**



**CH: CHAMBRAY**



**IV: IVORY**



**SS: SUNSHINE**



**SM: SMOKE**

Noise Reduction Coefficient Comparison

Frequency/Hz	100	125	160	200	250	315	400	500	630	800	1000	1250	1600	2000	2500	3150	4000	$\bar{\alpha}$	NRC
0mm / 0"	0.03	0.01	0.09	0.04	0.05	0.09	0.12	0.25	0.32	0.49	0.61	0.72	0.82	0.85	0.91	0.94	0.95	0.44	0.45
50mm / 2"	0.20	0.16	0.22	0.32	0.46	0.56	0.63	0.80	0.89	1.03	1.04	0.99	1.07	1.00	0.93	0.87	0.92	0.81	0.80
150mm / 6"	0.29	0.46	0.44	0.57	0.68	0.81	0.97	0.96	0.91	1.04	0.92	0.80	0.94	0.94	0.91	0.90	0.91	0.97	0.90

