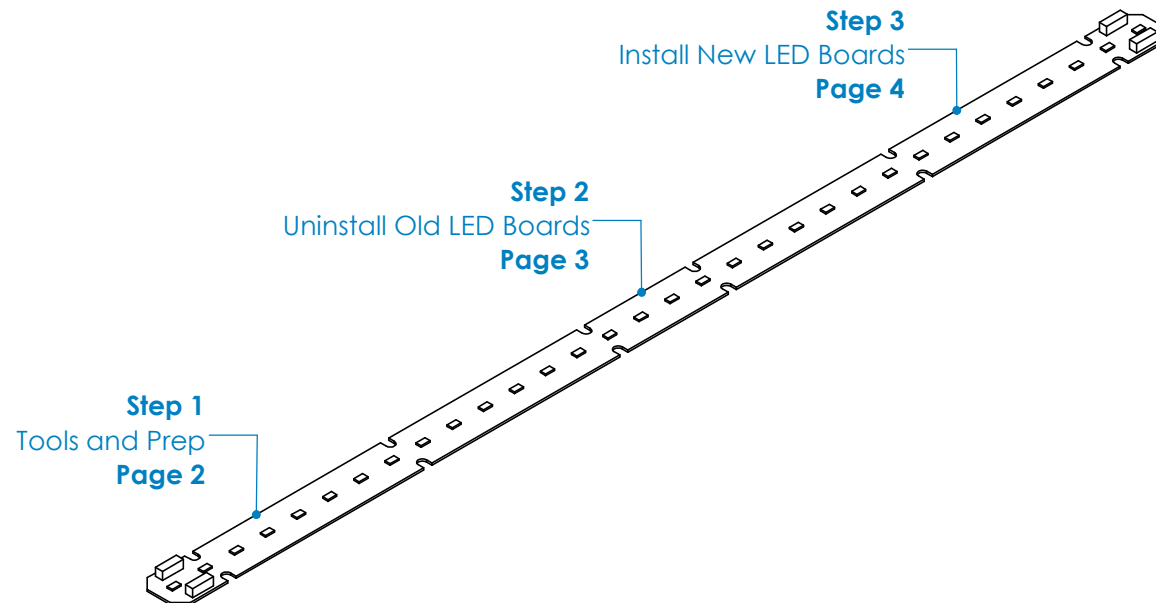


11108 - LED BOARD REPLACEMENT INSTRUCTIONS

Overview

OVERVIEW

- This product must be installed in accordance with all applicable codes by a person familiar with the product.
- Each fixture must be **properly supported** during install.
- **DO NOT** join fixtures on the floor prior to lifting, or damage will occur.
- **Before beginning installation**, review our complete list of warnings by visiting www.saylite.com/warnings.



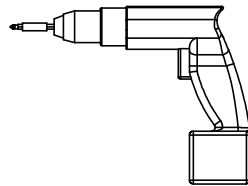
11108 - LED BOARD REPLACEMENT INSTRUCTIONS

Step 1 - Tools and Preparation

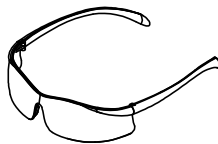
A. Tools Needed



Screwdrivers



Drill



Safety Glasses

- Always use proper safety equipment when installing fixtures.
- Tools shown are recommended for standard install. Tools needed may vary based on actual install location conditions.

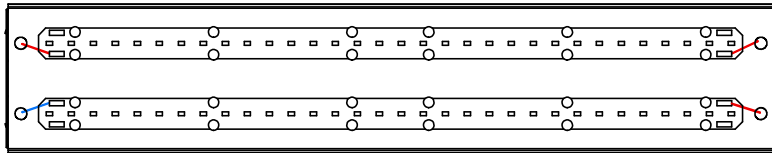
B. Fixture Preparation

- Turn OFF power feed to fixture(s) before uninstalling fixture or removing any components.
- Uninstall any necessary fixture components as needed to access the gear tray/reflector. Set aside lens and other components in a safe location for later use.
- Remove the reflector/gear tray from the fixture. Reflectors and gear trays can be secured with screws, clips, or snapped into place.

11108 - LED BOARD REPLACEMENT INSTRUCTIONS

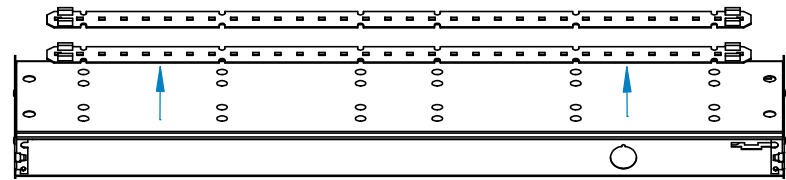
Step 2 - Uninstall Current LED Boards

A. Remove Wiring



- Take note of your current fixture wiring before removing any wires from the gear tray/reflector. Your fixture may have a different number of boards wired in a different array than what is shown.
- Use a paper clip or similarly small pinhead to either lift the tabs securing the wires to the LED boards or depress the wire connectors and release the wires. Some LED board wires may be pulled out of their sockets.

B. Remove Old Boards

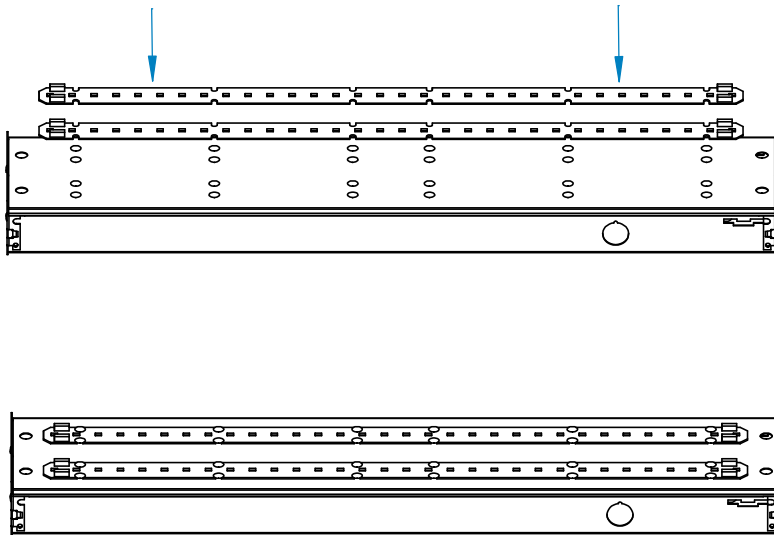


- Prior to removing the LED boards, note the location of positive and negative terminals for each LED board.
- Use a flat head screwdriver or blade to lift the plastic rivets enough to slip the board over the rivets.
- Slide the LED boards from under the rivets and lift them off the fixture.

11108 - LED BOARD REPLACEMENT INSTRUCTIONS

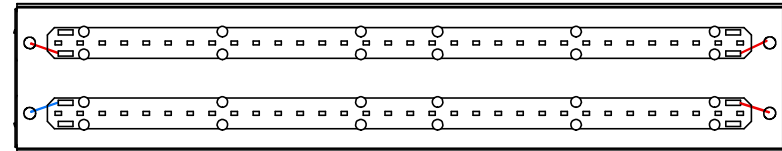
Step 3 - Install New LED Boards

A. Secure LED Boards



- Slide the new LED boards into place, ensure that the positive and negative terminals of the boards are arranged exactly as the previous LED boards.
- Replace any rivets that have been damaged.

B. Rewire LED Boards



- Rewire the LED boards, making sure to install the correct wires to each LED board terminal.
- Reinstall reflector/gear tray and reconnect all wiring within the fixture.
- Reconnect the power feed supply to the fixture and test the fixture. Reinstall fixture as needed.
- LED board replacement is now complete.