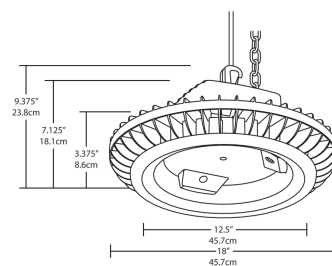
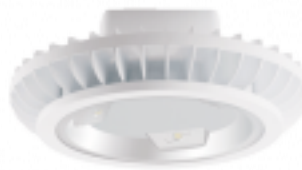


BAYLED78W

78W BAYLED high bay replaces 250W MH high bays, reducing energy consumption by 67%. Suitable for large spaces, including warehouses, factories, and distribution centers.

Color: White

Weight: 21.0 lbs



LED Info

Watts: 78W
 Color Temp: 5100K (Cool)
 Color Accuracy: 68
 L70 Lifespan: 100000
 LM79 Lumens: 7,612
 Efficacy: 79 LPW

Driver Info

Type: Constant Current
 120V: 0.82A
 208V: 0.52A
 240V: 0.45A
 277V: 0.4A
 Input Watts: 96W
 Efficiency: 81%

Technical Specifications

UL Listing:

Suitable for damp locations with cord and hook.
 Suitable for wet locations with 3/4" pendant stem.
 Covered ceiling mount only.

LEDs:

Three multi-chip, 26W high-output, long-life LEDs

Lifespan:

100,000-hour LED lifespan based on IES LM-80 results and TM-21 calculations

Drivers (3):

Constant Current, 720mA, Class 2 with 6 KV surge protection, 100-277VAC, 50/60 Hz

Input Watts:

96

Output Lumens:

7612

Lumens per Watt:

79

Color Accuracy (CRI):

68 CRI

Correlated Color Temp. (Nominal CCT):

5100K

Ambient Temperature:

BAYLED will operate from -40°C (-40°F) to 55°C (131°F)

Thermal Management:

Superior heat sinking with external air-flow fins

Housing:

Precision die-cast aluminum housing and door frame with 3-foot 600V power cord

Mounting:

Heavy-duty 3/4" NPS hook and 3 foot safety chain

Recommended Mounting Height:

25 ft.

Equivalency:

BAYLED replaces 250 Watt metal halide one-for-one, and is equivalent to 4 lamp T8 fixtures

Lens:

Tempered glass

Reflector:

Specular vacuum metallized polycarbonate.

Gaskets:

High-temperature silicone

Finish:

Chip and fade resistant polyester powder coat finish

Color Stability:

RAB LED performance exceeds industry standards for chromatic stability

Color Uniformity:

RAB's range of CCT (Correlated Color Temperature) follows the guidelines of the American National Standard for Specifications for the Chromaticity of Solid State Lighting (SSL) Products, ANSI C78.377.2011

Green Technology:

Mercury and UV free, and RoHS compliant



BAYLED78W - continued

IESNA LM-79 & LM-80 Testing:

RAB LED luminaries have been tested by an independent laboratory in accordance with IESNA LM-79 and LM-80, and have received the Department of Energy "Lighting Facts" label

Patents:

The design of the BAYLED™ is protected by patents pending in US, Canada, China, Taiwan and Mexico

Accessories:

Available accessories include protective polyshield and wire guards, replacement lens and doorframe, and an occupancy sensor. to see all accessories.