



# Make the move to Philips Lightolier CorePro LED Downlights

Available in 4" and 6" apertures



**PHILIPS**  
**LIGHTOLIER**

# Attractive, affordable, and easy to use...what more could you ask for?



Philips Lightolier CorePro LED Downlights are a family of LED retrofit downlights. Available in 4" and 6" apertures, CorePro luminaires are the perfect solution for retrofit, new construction and remodel applications.

Philips Lightolier CorePro LED Downlights are dimmable and easily fit inside many existing downlights, maximizing application flexibility. Approved for use in both IC and Non-IC installations, the CorePro downlights can improve the lighting in any number of spaces including living areas, kitchens, home offices, hallways, bedrooms, and other common areas.

The Philips Lightolier CorePro LED Downlights family utilizes the latest in LED technology, resulting in an extremely light-weight product. All of the CorePro DL products were designed with a white splay and flange which allows for consistency on a job. The 4" and 6" apertures can be combined in a single room, resulting in a clean, balanced lighting schematic. The high-transmittance lens on the Philips Lightolier CorePro LED Downlight diffuses the light for nice, even output.

## Specifications

### 6" CorePro DL

Catalog Number	CP630K6	CP630K10
Aperture	6" (150mm)	6" (150mm)
Lumens	648	1110
Voltage	120V	120V
CCT	30K	30K
Input Watts	8.2	12.8
LPW	79	87
Dimming*	Triac	Triac

### 4" CorePro DL

Catalog Number	CP430K6
Lumens	625
Voltage	120V
CCT	30K
Input Watts	8
LPW	78
Dimming*	Triac

\* Dimming compatibility listed on the next page.

# Global LED Downlight Solution

The Philips Lightolier CorePro LED Downlight is a retrofit solution that is based on a new Philips Global Downlight Platform. Philips LEDs combined with a mixing chamber and a high transmittance lens offers a very comfortable light distribution without hot spots or glare.

There are currently hundreds of millions of downlights installed across the US alone<sup>1</sup>. Many of these downlights are in residential applications and utilize inefficient sources like the incandescent lamp. These downlights are perfect retrofit candidates for the Philips Lightolier CorePro LED Downlight. Installing in less than one minute, the Philips Lightolier CorePro LED Downlight simply utilizes a screw cap similar to that of an incandescent lamp and fits perfectly into a medium base lampholder found inside the downlight. Stainless steel friction springs on the Philips CorePro LED Downlight allow for a snug fit inside compatible downlights once installed.

Expected lifetime 50,000 hrs and backed by a 5 year warranty (see Philips.com/warranties for details).



## Dimming Compatibility List

Dimmers Brand	Drivers Reference	8W	13W
Lutron	FAELV-500-XX	Compatible	Compatible
Lutron	S2-LH	Compatible	Compatible
Leviton	IPI06-XXX	Compatible	Compatible
Leviton	6602-X	Compatible	Compatible
Leviton	6681-X	Compatible	Compatible
Leviton	6683-X	Compatible	Compatible
Leviton	6684-X	Compatible	Compatible
Leviton	700-XX	Compatible	Compatible
Leviton	705-XX	Compatible	Compatible
Leviton	6633	Compatible	Compatible
Cooper	9530XXX	Compatible	Compatible
Leviton	6674	Compatible	Compatible
Leviton	IPL06	Compatible	Compatible

## 6" Compatible Downlights

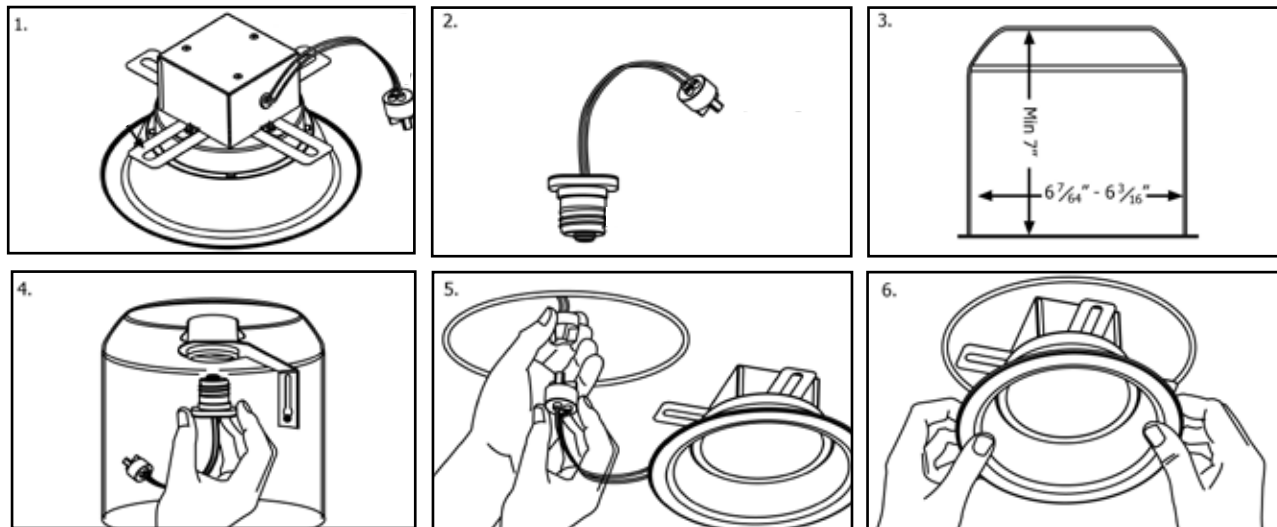
Philips Lightolier I104IC  
 Philips Capri CR1NBQP, QL6NBQP, PR75ASIC,  
 PRR75ICX  
 Lithonia L7X  
 Halo H71CAT  
 Juno IC22  
 Progress P87-A1

## 4" Compatible Downlights

Philips Capri P4, P4ASIC, P4R, R4, R4ASICG, RR4  
 Halo H991CAT  
 Seagull I179, I105  
 All-Pro E1400ATSB

<sup>1</sup> Department of Energy, [http://apps1.eere.energy.gov/buildings/publications/pdfs/ssl/recessed\\_downlight.pdf](http://apps1.eere.energy.gov/buildings/publications/pdfs/ssl/recessed_downlight.pdf).

# Installation



See Installation Guide for full instructions on installing this product.

Installation guide will accompany each Philips Lightolier CorePro LED downlight when shipped from the factory.

## WIRING METHOD, REMOVAL OF THE ORIGINAL TRIM AND LIGHT SOURCE

1. Turn off power to the fixture at the fuse or circuit breaker box. Remove the lamp and/or the trim if any are still installed in the housing.
2. Screw E26 socket adapter into the base socket inside the housing (Figure 4).
3. Adjust the position of the socket plate to its maximum height in the housing.
4. Plug the connector of E26 socket adapter into the LED trim's mating connector (Figure 5).  
Make sure connectors are fully engaged.

## INSTALLATION OF THE MODULE INTO THE RECESSED HOUSING

Center the LED trim in the housing opening. Align the four retention springs with the recessed housing avoiding interference with anything protruding from the housing walls. Push it straight up until it is tight against the ceiling (Figure 6).

For removal of the LED trim:

1. Turn off power to the fixture;
2. Pull trim down from ceiling;
3. Disconnect the trim from the socket adapter.



© 2013 Koninklijke Philips N.V.  
All rights reserved.  
Specifications are subject to change without notice.

PLi-1313BR 08/13

Philips Lighting Company  
A Division of Philips North America  
200 Franklin Square Drive  
Somerset, NJ 08873  
Phone: 855-486-2216

Philips Lighting Company  
A Division of Philips Canada  
281 Hillmount Road  
Markham ON, Canada L6C 2S3  
Phone: 877-744-5633