

## DESCRIPTION

One of Corelite's latest additions to its line of architectural direct-indirect extruded fixtures, the Loft, features crisp modern lines with a new, ultra-high efficiency, clear micro-linear prismatic lens material to meet the tightest watts-per-square foot requirements. The Loft, with up to 95% fixture efficiency, also offers the complete array of Corelite's innovative and efficient optical components, including the revolutionary Slide-N-Lock™ TM optics. The Loft may be mounted individually or continuously with 4', 8' and 12' modular sections and is suited for open offices, private offices, conference rooms, reception areas and educational facilities.

Catalog #		Type
Project		
Comments		Date
Prepared by		

## SPECIFICATION FEATURES

### A ... Construction

Housing is 6063 T5 aluminum extrusion forming a 7-1/2" x 2-1/2" angled profile. Standard 4'-0", 8'-0" and 12'-0" fixture lengths combine for continuous runs.

### B ... End Caps

Standard end caps are precision die-cast aluminum, mechanically attached without exposed fasteners.

### C ... Lens

Lens is .125" thick clear microlinear prismatic acrylic material offering 91% transmission.

### D ... Reflectors

Reflector pan is painted with a high reflectance white powder coat finish. Optional deformed side reflectors are highly specular anodized aluminum.

### E ... Electrical

T5/T5HO fixtures are pre-wired with quick wire connectors and use UL listed Class P, T5/T5HO program rapid start universal voltage electronic ballasts, power factor of 97% with less than 10% THD. Fixtures and electrical components certified to UL and CUL standards.

### F ... Finish

Fixture housings are standard white using electrostatically applied polyester powder coat paint.

### Mounting

Standard aircraft cable mounts on 4'-0", 8'-0" and 12'-0" centers. Refer to installation section for various ceiling interface details and rigid pendant mounting details.



## Loft Micro Prismatic Lens

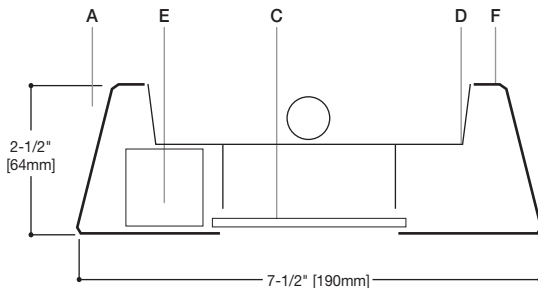
1T5  
1T5HO

Suspended  
Direct/Indirect

Light Distribution  
Indirect - 74.3%  
Direct - 25.7%



SLIDE-N-LOCK™



End Cap Side View

### MODULES AND DIMENSIONS\*

48" [1219mm]

96" [2438mm]

144" [3658mm]

\*Dimensions do not include end caps.

## ORDERING INFORMATION

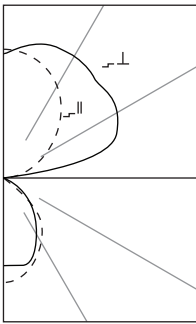
Sample Number: L2-WM-1T5-1C-UNV-AC48-T1-12

<b>Series</b> L2: Loft Suspended	<b>Number of Lamps</b> 1: 1 Lamp	<b>Number of Circuits</b> <sup>1</sup> 1: 1 Circuit	<b>Voltage</b> <sup>1</sup> 120: 120V 277: 277V 347: 347V UNV: Universal (120V-277V)	<b>Suspension Length</b> <b>Adjustable Cable</b> 48", 120", 240", 300", or 360" (infinite adjustment along entire length of cable) <b>Rigid Pendant</b> <sup>2</sup> 12", 15", 18", 21", 24", or 27"	<b>Ceiling Type</b> T1: 1" T-Bar T9: 9/16" T-Bar TS: Slotted T-Bar ST: Structure JB: 4" Octagonal J-Box	<b>Options</b> Slide-N-Lock™ DL1 DL2 DL3 DL4 DL5 DL6 DL7 DL8
<b>Optics Up</b> S: Specular W: White	<b>Lamp Type</b> N5: T5 Normal Output T5: T5 High Output	<b>Wiring</b> <sup>1</sup> B: Battery Pack C: Standard Circuit D: Dimming E: Emergency T: Nightlight Y: Daylight	<b>Suspension</b> A: Aircraft Cable P: Rigid Pendant	<b>Power Feed</b> <sup>1</sup> C: Straight Cord K: Curly Cord P: Rigid Pendant	<b>Run Length</b> <b>Individually Mounted</b> Luminaires may be 4', 8', or 12' in length <b>Continuously Mounted</b> Standard row configurations over 12' consist of 8' and 12' sections	

Notes: 1 Not all options available. Please consult your Cooper Lighting Representative for availability.  
2 Consult adder section of the price guide for additional standard lengths.

Specifications and Dimensions subject to change without notice.

Consult your representative for additional options and finishes.



L2-WM-1T5  
(1) FP54/841/HO  
4500 Lumens

Efficiency 95.1%

Test Report  
#LSI24511

Coefficients of Utilization

rc	Effective floor cavity reflectance									20%									
	80%			70%			50%			30%			10%			0%			
rw	70	50	30	70	50	30	70	50	30	70	50	30	70	50	30	70	50	30	0
RCR	0	96	96	96	86	86	86	86	66	66	66	49	49	49	32	32	32	24	
	1	88	84	81	78	75	73	70	59	57	55	43	42	41	29	28	28	21	
	2	80	74	69	64	72	66	62	58	52	49	46	38	36	35	26	25	24	18
	3	74	65	59	54	65	59	53	49	46	42	39	34	32	30	23	22	21	16
	4	67	58	51	45	60	52	46	41	41	37	33	31	28	26	21	19	18	14
	5	62	52	44	39	55	46	40	36	37	32	29	27	25	22	19	17	16	12
	6	57	46	39	34	51	42	35	31	33	29	25	25	22	20	17	16	14	11
	7	53	42	35	30	47	38	31	27	30	25	22	23	20	17	16	14	13	10
	8	49	38	31	26	43	34	28	24	27	26	20	21	18	15	15	13	11	9
	9	45	34	28	23	40	31	25	21	25	21	18	19	16	14	13	12	10	8
	10	42	31	25	21	38	28	23	19	23	19	16	18	15	13	12	11	9	7

Candela

Angle	Along II	45°	Across I_
0	507	507	507
5	509	507	508
15	491	505	512
25	454	458	434
35	398	360	332
45	310	266	225
55	198	151	123
65	98	79	62
75	34	37	34
85	7	10	10
90	0	0	0
95	18	109	81
105	114	464	304
115	244	556	733
125	371	605	771
135	485	672	774
145	575	723	801
155	643	758	806
165	693	760	793
175	719	728	736
180	716	716	716

Zonal Lumen Summary

Zone	Lumens	%Lamp	%Fixture
0-30	398	8.8	9.3
0-40	625	13.9	14.6
0-60	968	21.5	22.6
0-90	1100	24.4	25.7
40-90	333	7.42	8.17
60-90	58	1.30	1.43
90-180	3177	70.6	74.3
0-180	4277	95.1	100.00

Luminance Data

Angle in Deg	0-Deg cd/sm	45-Deg cd/sm	90-Deg cd/sm
45	5731	4909	4152
55	4513	3431	2792
65	3022	2454	1916
75	1731	1857	1736
85	1034	1558	1439

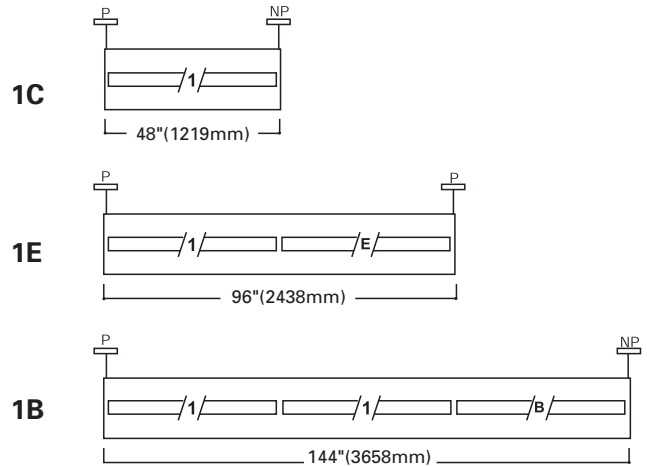
COMMON CIRCUIT CONFIGURATIONS

- 1C=Single circuit luminaire
- 1E=Single circuit luminaire with emergency circuit
- 1B=Single circuit luminaire with battery pack

/1/ =Circuit 1  
/E/ =Emergency Circuit  
/B/ =Battery Circuit

=Power Mount

=Non-Power Mount



STANDARD ROW CONFIGURATIONS

FIXTURE LENGTH	4'	8'	12'	16'	20'	24'	28'	32'	36'	40'	44'	48'	52'	56'	60'	64'	68'	72'	76'	80'	84'	88'	92'	96'	100'	104'	108'	
4'	1																											
8'		1		2	1		2	1		2	1		2	1		2	1		2	1		2	1		2	1		2
12'			1		1	2	1	2	3	2	3	4	3	4	5	4	5	6	5	6	7	6	7	8	7	8	9	