

Limited Edition

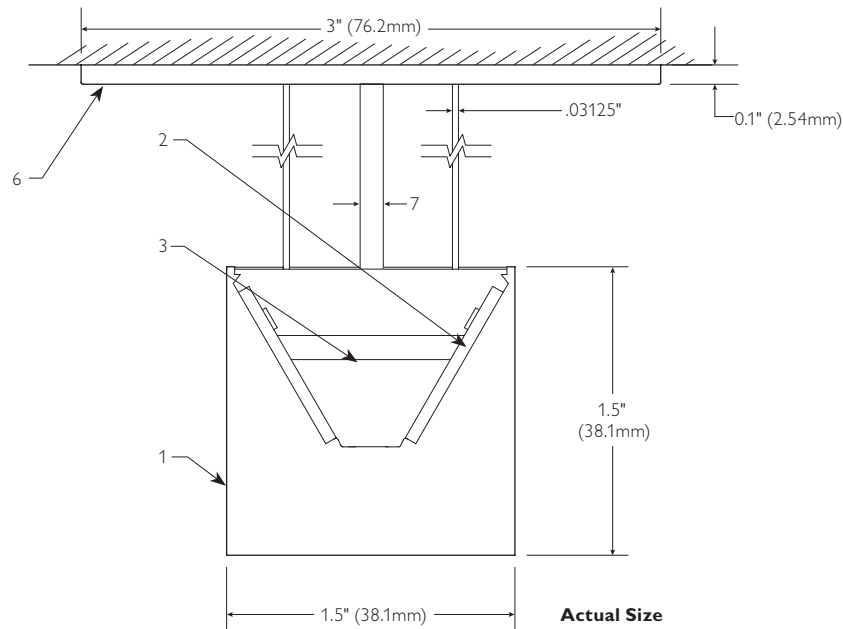
Linear Lighting Systems, Pendant, LED

Page 1 of 5

Catalog number:

Notes:

Type:



Features

1. **Housing:** Single piece of extruded aluminum, a portion from recycled material.
2. **Light source:** LED. High output - 3000 lumens (nominal per 4' section).
3. **Reflector:** White polycarbonate.
4. **Alignment mechanism:** The housing and end cap align with slip fit 1/8" spring pins assuring a tight, seamless aligned fit.
5. **Finish:** Standard finish is textured matte White or Aluminium color.
6. **Steel formed canopy attachment:** Powder coated textured matte white, see canopy types and details on page 4.
7. **Power feed:** 22/2 gage plenum rated cable from power supply to quick connect plug at fixture (center feed shown).

Electrical

Integrated remote power supply: Power factor: greater than 90%. Output is 24v DC Class 2 rated.

Emergency battery pack: Suggested Lightolier LMI Series external interruptible power supply. LMI100 suitable for rows up to 8' in length.

Connections: cULus rated supply wire from feed mounting tray above ceiling with center or side supply openings on canopy.

Labels

Fixture and feed mounting tray combination cULus approved.

Mounting

Fixed position mounts supplied standard at ends and joints. Mounts can be located on 4', 5', 6' or 8' intervals. 1/32" Aircraft cable gripper is tamper-resistant and provides infinite vertical adjustment capability.

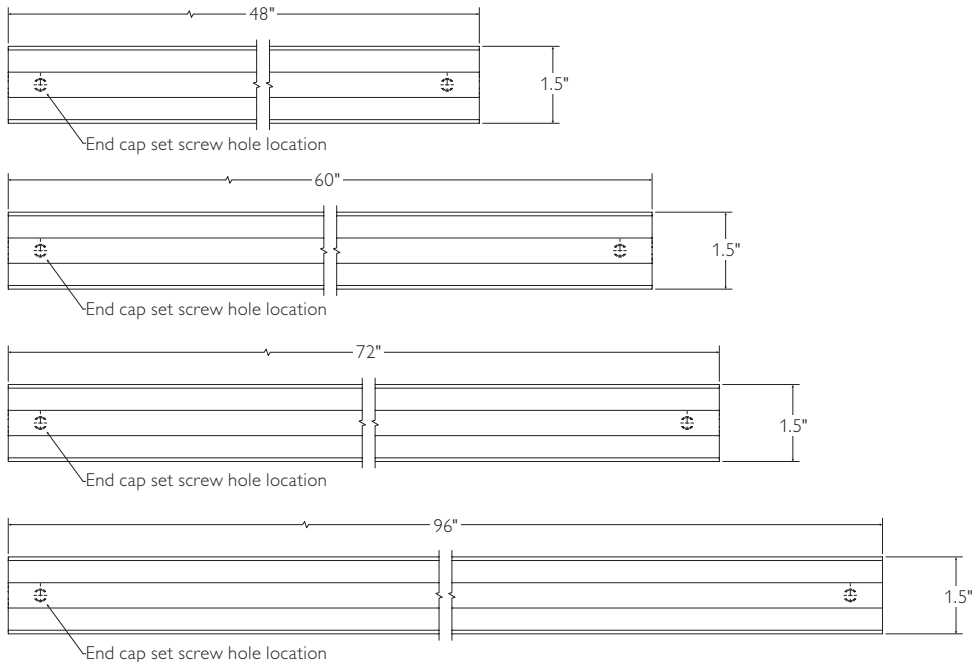
Limited Edition

Linear Lighting Systems, Pendant, LED

Ordering guide

A + B + C + D + E (if required) = complete unit.

Limited Edition pendant rows are composed of luminaires, end sets which include canopies and feeds, joiner modules (also include canopy if required)



Note: For complete FinishLine row length, add lengths of all fixture modules, plus 1.05" for end caps (.525" for each end).

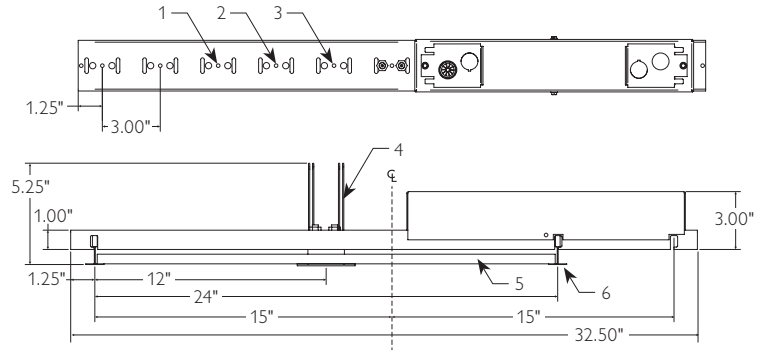
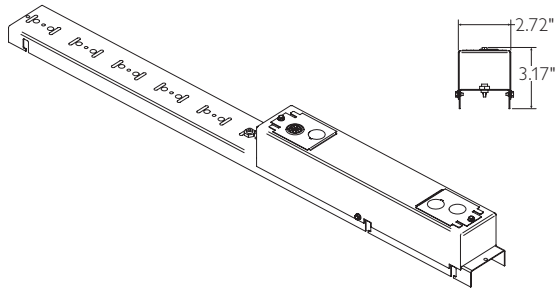
A. Luminaire Ordering Information

Family	Mounting	Distribution	Light Source	LED Color	Lumen Category	Lower Optics	Upper Optics	Fixture Length	Wiring	Finish
LTD	0	3	L	B	X	N	N		1	
Limited Edition	0 = Pendant	3 = Indirect	L = LED	B = 3500k	X = Remote power supply	N = None	N = None	04 = 4 foot 05 = 5 foot 06 = 6 foot 08 = 8 foot	1 = 1 circuit	WH = White AL = Aluminum

Limited Edition

Linear Lighting Systems, Pendant, LED

Page 3 of 5

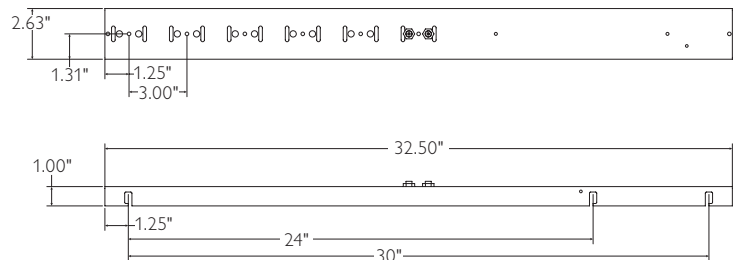
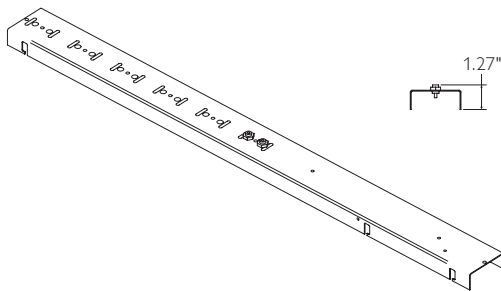


B. Feed Mounting Tray Ordering Information

One Feed Mounting Tray required for every 10' of luminaire length

Family	Type	Mount	Voltage	Power Supply	Lumen Category
LTD	FD	T		RP	G
Limited Edition	FD = Feed	T = Tray	1 = 120v 2 = 277v	RP = Integrated remote power supply	G = Hi Lumen nom. 3000 lm per 4'

1. Hole is center of canopy location. Canopies may be located on 3" increments across tile width. Location along length of tile is determined by placement of mounting tray.
2. Center of 24" wide tile.
3. Center of 30" wide tile.
4. Canopy tension spring.
5. Acoustical tile (by others).
6. Standard 1.5" T-Bar height.



C. Non-Feed Mounting Tray Ordering Information

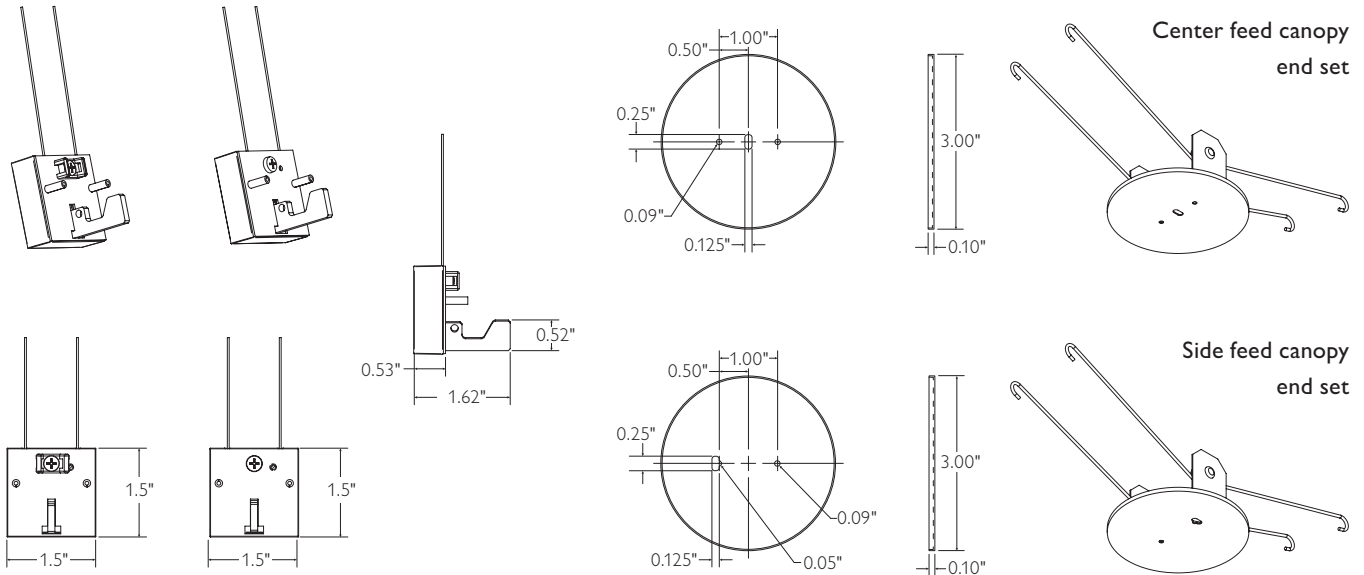
Family	Type	Mount
LTD	NF	T
Limited Edition	NF = Non-Feed	T = Tray

Limited Edition rough-in system allows the contractor to order and install the mounting trays ahead of the finished components. The integrated remote power supply makes the system easy to install and wire, while keeping the below ceiling luminaires sleek and minimal.

Limited Edition

Linear Lighting Systems, Pendant, LED

Page 4 of 5



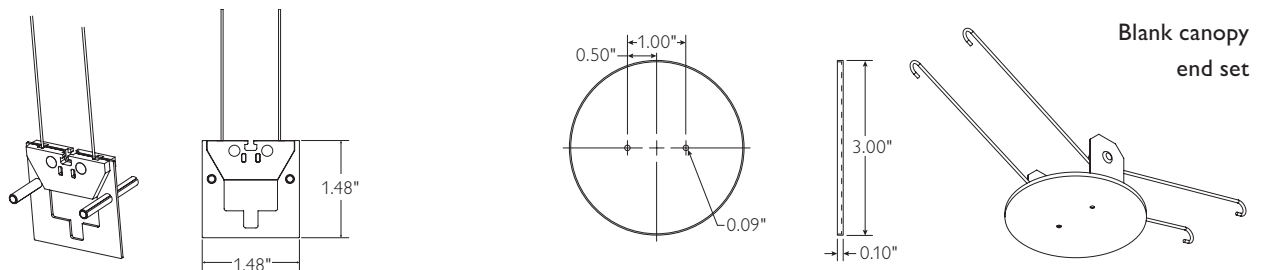
D. End Set Ordering Information

Includes a pair of end caps and two canopies with supports and feed/s.

Family	Type	Number of End Feeds	Drop Length	Finish
LTD			48	
Limited Edition			48 = 48" Suspension (consult factory for other lengths)	WH = White AL = Aluminum
				EC = Center feed canopy end set ES = Side feed canopy end set
				SF = Feed to one end cap (blank canopy at opposite end.)
				DF = Feeds to both end caps (for multi-fixture rows)

To keep the simplicity and clean lines of the Limited Edition system, canopies are small, and there is no visible hardware.

Fixture joints are minimal, and feature an injection molded v-block to prevent light leaks.



E. Joiner Ordering Information

Includes joiner with canopy.

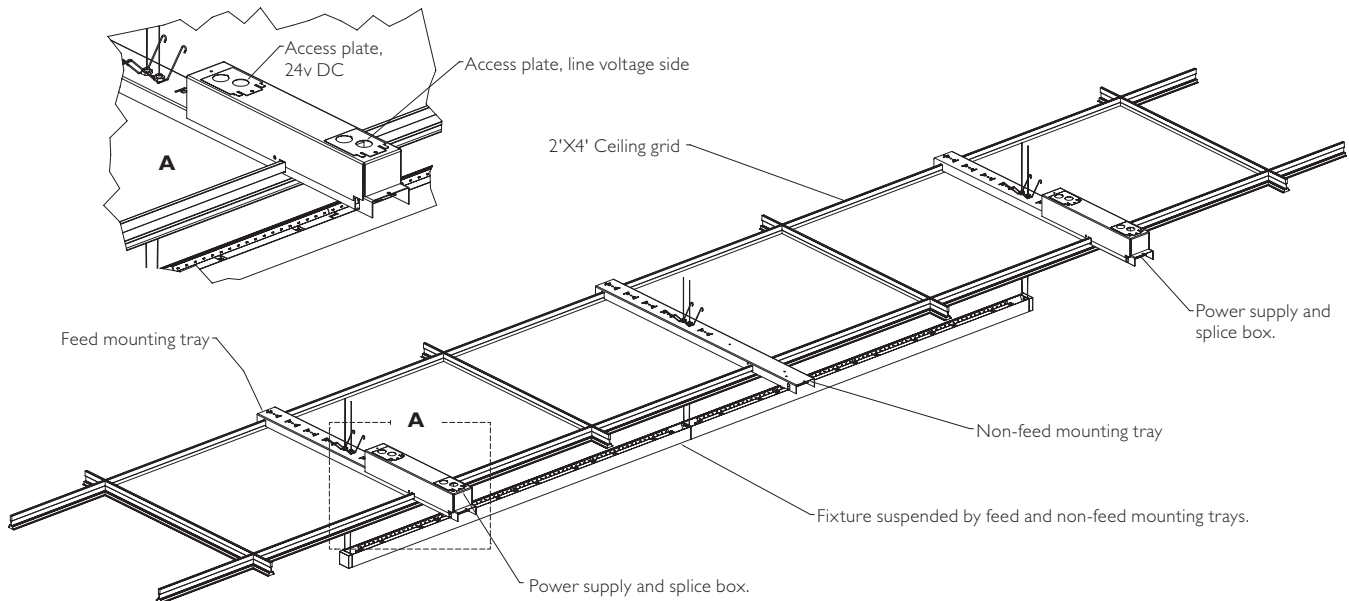
Family	Type	Feed / Non-Feed	Drop Length	Finish
LTD	J		48	
Limited Edition	J = Joiner	NF = Non-feed EC = Center feed ES = Side feed	48 = 48" Suspension (consult factory for other lengths)	WH = White AL = Aluminum

PHILIPS
LIGHTOLIER

Limited Edition

Linear Lighting Systems, Pendant, LED

Page 5 of 5



Photometry

Report Number¹: G2012131
 Catalog Number: Indirect pendant
 Delivered Lumens: 3061
 Correlated Color Temp.²: 3464K
 Input Watts: 34.4
 Efficacy: 89 lm/w
 CRI: 83
 Light Source: LED
 Luminaire: 4' Indirect pendant.
 CIE Type: Indirect

Candela Distribution

Vertical Angle	Horizontal Angle			Zonal Lumens
	0	45	90	
90	0	0	0	
95	60	24	24	92
105	209	460	616	457
115	335	501	648	490
125	450	570	665	501
135	552	611	707	481
145	638	664	708	420
155	704	716	733	332
165	747	758	765	214
175	769	781	788	74
180	782	782	782	

Coefficients of Utilization

Ceiling	80%			50%			30%		
	70	50	30	50	30	10	50	30	10
RC	Zonal Cavity Method								
RW	Effective Floor Reflectance = 20%								
Room Cavity Ratio	1	87	83	79	48	47	45	28	27
	2	79	72	66	42	40	37	24	23
	3	72	63	57	37	34	31	21	20
	4	65	56	48	33	29	26	19	17
	5	60	49	42	29	25	22	17	15
	6	55	44	36	26	22	19	15	13
	7	50	39	32	23	19	17	14	11
	8	47	35	28	21	17	14	12	10
	9	43	32	25	19	15	13	11	9
	10	40	29	22	17	14	11	10	8

Zonal Lumen Summary*

Zone	Lumens	% Lamp	% Fixt.
0- 90	0	0.0	0.0
90- 120	1039	33.9	33.9
90- 130	1539	50.3	50.3
90- 150	2440	79.7	79.7
90- 180	3061	100.0	100.0
0-180	3061	100.0	100.0

*Total Efficiency

¹ Tested using absolute photometry as specified in LM79: IESNA Approved Method for the Electrical and Photometric Measurements of Solid-State Lighting Products.
² Correlated Color Temperature within specs as defined in ANSI_NEMA_ANSI C78.377-2008: Specifications for the Chromaticity of Solid State Lighting Products.



Philips Lightolier
 e: lol.webmaster@philips.com
 t: (508) 679-8131
 w: www.lightolier.com

LTD03LBXNN November 28, 2012

Specifications are subject to change without notice.
 © Koninklijke Philips Electronics N.V., 2012. All rights reserved.