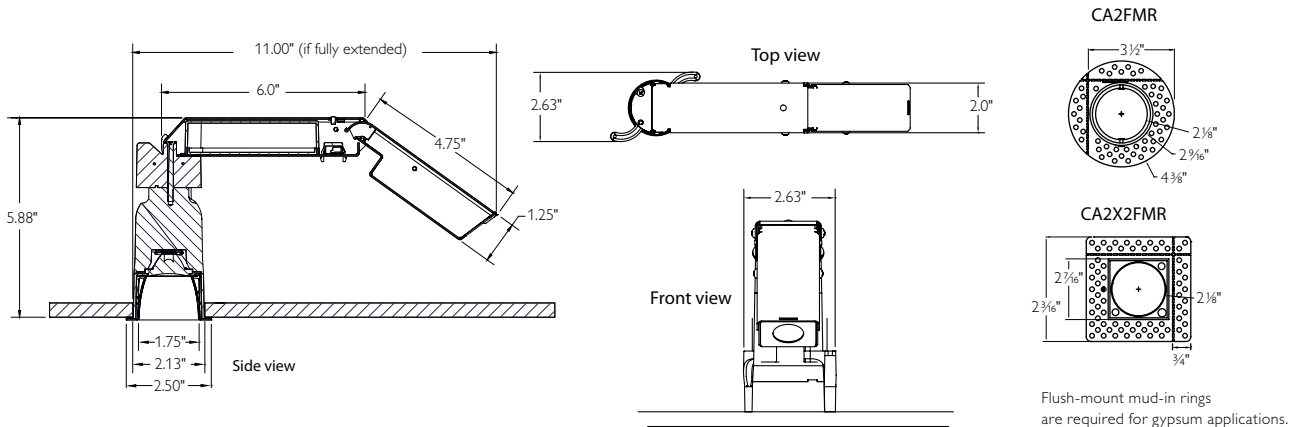


Project:	Catalog No:	Mfg:
Location:	Fixture Type:	Qty:
Notes:		Lamps:



Ordering guide: Frame-in kits

Frame-in kit series	Lumen package (nominal)	Style	Color	Beam spread	Installation style ²	Input voltage
C2L	04 400 Lumens	DL Downlight flanged	30K 3000K	12 12°	R install-from-below	1 120V UZ10V Universal with 0-10V dimming
		DLFT Downlight flush-mount ¹	27K 2700K	17 17°		
				25 25°		
				38 38°		
				47 47°		

Ordering guide: Reflectors

Reflector series	Style	Finish	Flange
C2L Round	DL Downlight (50° cutoff) LW Lensed wall washer ^{2,3}	BK Black CCD Comfort clear diffuse CCZ Champagne bronze	P Polished (aperture-matching) FT Flush mount*
		WH White (painted)	W White (painted flange) BF Black flange ⁴ FT Flush mount*
	DLLS Downlight with linear spread lens (75° cutoff)	BK Black CCD Comfort clear diffuse CCZ Champagne bronze WH White (painted)	P Polished (aperture-matching) FT Flush mount*
C2X2L Square	DL Downlight (50° cutoff) LW Lensed wall washer ²	BK Black CCD Comfort clear diffuse WH White (painted)	W White (painted flange) FT Flush mount*

- Requires "FT" series reflectors and mud ring (ordered separately).
- 17° beam spread recommended.
- 18" max installation from vertical surface recommended.
- Available with Downlight (DL) only.

*Requires "FT" series frame-in kit

Project:	Catalog No:	Mfg:
Location:	Fixture Type:	Qty:
Notes:		Lamps:

Features

Aperture: 1.75" (44 mm) I.D., 2.50" (63mm) O.D.
Input power: 11W max. (C2L04) 8.5W max.
Fixture output: Aluminum. Provides 50° cutoff to source & source image. Self-flanged.

Beam Spread options

Beam spread	Spacing criterion	Delivered lumens	Efficacy	CBCP
12°	0.2	328 lm	29.8 lm/W	5099
17°	0.3	412 lm	37.3 lm/W	3282
25°	0.4	382 lm	36.0 lm/W	1995
38°	0.6	377 lm	34.9 lm/W	936
47°	0.7	331 lm	30.0 lm/W	544

Reflector cone: Aluminum. Provides 50° cutoff to source & source image. Twist & lock installation within frame-in kit ensures snug fit to ceiling.

Reflector flange: Thickness: 0.09" (2.4 mm). Width (flanged) 0.37" (9.5 mm). Width (flush-mount) 0.19" (4.8 mm).

Required depth: 6" (150 mm) plenum depth required for Non-IC installation. See above for fixture dimensions.

Ceiling cutout: 2.13" (54mm)

Installation: Hinged design allows fixture to be installed from below ceiling. Two screws actuate pivoting installation arms. Vertical installation only (as shown in above drawings).

Thick ceiling capability: 0.38" - 2"

Field accessibility: Beam spreads (optics) and driver are field interchangeable/replaceable.

Fixture weight: 1.8 lbs.

Electrical

Power connection: Integral connection between driver and LED array
Junction box: UL listed for 6 No 12 AWG, 90°C through branch circuit connectors. Allows inspection from below. Compatible with 2-1 conduit connector for daisy chaining.

Minimum starting temperature: -20°C

Maximum operating temperature: 60°C

Input voltage: 120V/277V

Input frequency: 60Hz

Input current: 0.03A-0.07A

LED drive current: 500mA

THD: <20%

Power Factor: >0.9

FCC rating: Part 15 / Class B driver

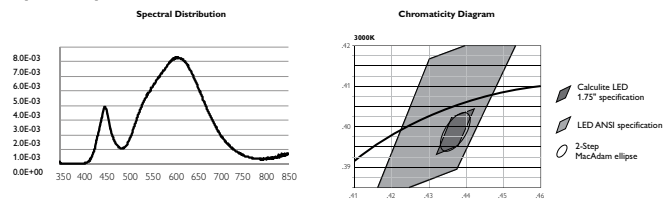
Technology

LES Array: 4 semi conductor LEDs

Photometric performance: Tested in accordance to IESNA LM-79-2008

Color consistency: 2 SDCM (max.)

Spectral power distribution



Color Rendering Index: 80 min, 82 typical

Ra	R1	R2	R3	R4	R5	R6	R7	R8	R9
81.0	80.2	87.1	91.0	78.9	78.3	81.0	85.6	66.2	21.3
R10	R11	R12	R13	R14					
67.7	74.9	62.1	81.4	94.2					

Dimming capability: ELV dims to nominal 10% lumen output. See LED-DIM specification sheet for dimming system compatibility.

Rated life

LES (Light Emitting Source): 50,000 hours at 70% lumen maintenance (L70, B50). Based on IESNA LM-80-2008.

Driver: 50,000 hours

Labels

UL, cUL, I.B.E.W, AirSeal
 17°, 25° & 38° & 47° beams suitable for wet location
 12° beam suitable for damp location
 5 year warranty

Quick-ship

Philips is committed to providing customers with the products they need when they need them.

Spec Smart

Two-week quick-ship

Trims

C2LDLCCDP and C2LIC

Quick-ship SKUs apply to the United States only.

Project:	Catalog No:	Mfg:
Location:	Fixture Type:	Qty:
Notes:		Lamps:

Micro Vetro element¹

Cat. No.	Descriptions
D2LR01	Round Acrylic w/Aluminum insert
D2LR02	Round Acrylic
D2LR03	Round Glass
D2LS01	Square Acrylic ⁴
D2LS02	Square Glass ⁴

Installation accessories³

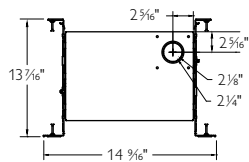
Cat. No.	Descriptions
C2LIC	IC frame (new construction)
C2LMP	New construction mounting pan
CA2FMR	Round flush-mount mud-in ring
CA2X2FMR	Square flush-mount mud-in ring

1. Use with C2L04 Calculite 1.75" base fixture.
2. Actual diffusion depends on selected beam spread and accessory. Linear diffuser requires reflector.
3. Recommended for specific applications. See Calculite C2L04 spec sheet for details.
4. Optional linear reflector softens beam edges of square element.

Optional installation accessories

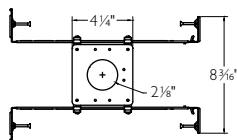
The standard C2L product offering is Non-IC, wet location listed* with no additional "frame-in kit" required. Listed below are additional frame options.

C2LIC



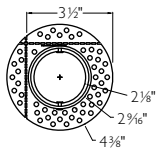
IC frame (new construction). Certified for use in Chicago Plenum applications. Includes bar hangers with preset screws which accommodate 12"-24" joist spacing. Bars also attach to T-bar ceilings.
Width (min): 13 7/16",
Length: 14 9/16",
Depth: 9 5/16".

C2LMP



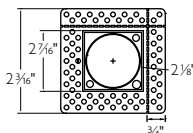
New construction mounting pan provides ability to prelocate wiring for easy below-ceiling access. Includes bar hangers with preset screws which accommodate 12"-24" joist spacing. Bars also attach to T-bar ceilings. Width: 5.5", Length (min): 13.12"

CA2FMR



Round aperture flush-mount mud-in ring. Recommended for gypsum applications. Perforated flange allows installation only 1.4" from vertical structure, including corners.

CA2X2FMR

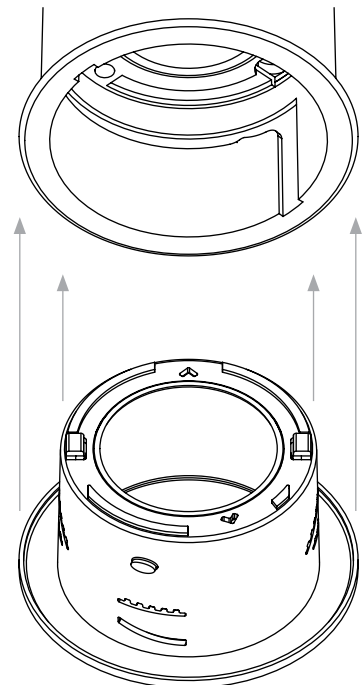


Square aperture flush-mount mud-in ring. Recommended for gypsum applications. Perforated flange allows installation only 1.4" from vertical structure, including corners. Square plate secures magnetically to mud-in ring. Tether included.

Reflector can be rotated 90° to ensure proper alignment. Friction-fit design maintains installation integrity.

For wall washer & linear spread options, lenses are factory-assembled into specified reflector.

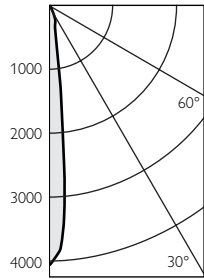
Durability
Calculite LED 1.75" fixtures operating temperatures are well below the recommended thermal limit of each optical accessory, eliminating lens degradation and ensuring maximum optical stability.



Project:	Catalog No:	Mfg:
Location:	Fixture Type:	Qty:
Notes:		Lamps:

Reflector finish multipliers: CCD (1.0) WH (0.95) CCZ (0.88 (est.)) BK (tbd) CCD finish is tested. All other finishes calculated.

Candela plot



Fixture:	C2L04DL30K12R1
Reflector:	C2LDLCCDP
Accessory:	none
Beam Angle:	12°
Spacing Ratio:	0.2
CBCP:	5099
Lumens:	328
Watts:	11
Efficacy (lm/w):	29.8
CCT:	2990
Cutoff:	50°

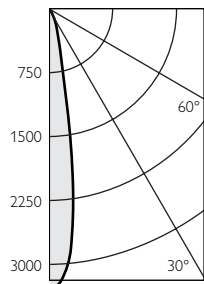
Single unit data

Ceiling height	Initial footcandles	Beam diameter
5'	204	1.0'
6'	142	1.2'
7'	104	1.4'
8'	80	1.6'
9'	63	1.8'

Candela table

Angle	Intensity	Lumens
0	5099	
5	2829	118
15	290	83
25	61	45
35	14	9
45	7	6
55	3	3
65	1	1

Candela plot



Fixture:	C2L04DL30K17R1
Reflector:	C2LDLCCDP
Accessory:	none
Beam Angle:	17°
Spacing Ratio:	0.3
CBCP:	3282
Lumens:	412
Watts:	11
Efficacy (lm/w):	37.3
CCT:	2979
Cutoff:	50°

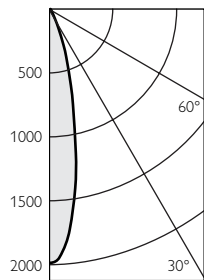
Single unit data

Ceiling height	Initial footcandles	Beam diameter
5'	131	1.5'
6'	91	1.8'
7'	67	2.1'
8'	51	2.4'
9'	41	2.7'

Candela table

Angle	Intensity	Lumens
0	3282	
5	2835	212
15	432	133
25	126	56
35	13	9
45	3	2
55	0	0
65	0	0

Candela plot



Fixture:	C2L04DL30K25R1
Reflector:	C2LDLCCDP
Accessory:	none
Beam Angle:	25°
Spacing Ratio:	0.4
CBCP:	1995
Lumens:	382
Watts:	10.6
Efficacy (lm/w):	36.0
CCT:	2979
Cutoff:	50°

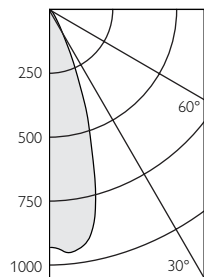
Single unit data

Ceiling height	Initial footcandles	Beam diameter
5'	80	2.0'
6'	55	2.4'
7'	41	2.8'
8'	31	3.2'
9'	25	3.6'

Candela table

Angle	Intensity	Lumens
0	1995	
5	1742	147
15	623	174
25	86	51
35	12	8
45	3	2
55	0	0
65	0	0

Candela plot



Fixture:	C2L04DL30K38R1
Reflector:	C2LDLCCDP
Accessory:	none
Beam Angle:	38°
Spacing Ratio:	0.6
CBCP:	936
Lumens:	377
Watts:	10.8
Efficacy (lm/w):	34.9
CCT:	2977
Cutoff:	50°

Single unit data

Ceiling height	Initial footcandles	Beam diameter
5'	37	3.0'
6'	26	3.6'
7'	19	4.2'
8'	15	4.8'
9'	12	5.4'

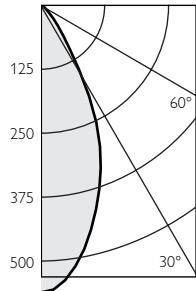
Candela table

Angle	Intensity	Lumens
0	936	
5	959	90
15	668	180
25	167	84
35	28	19
45	4	4
55	0	0
65	0	0

Project:	Catalog No:	Mfg:
Location:	Fixture Type:	Qty:
Notes:		Lamps:

Reflector finish multipliers: CCD (1.0) WH (0.95) CCZ (0.88 (est.)) BK (tbd) CCD finish is tested. All other finishes calculated.

Candela plot



Fixture: C2L04DL30K47R1
Reflector: C2LDLCCDP
Accessory: none
Beam Angle: 47°
Spacing Ratio: 0.7
CBCP: 544
Lumens: 331
Watts: 11
Efficacy (lm/w): 30.0
CCT: 2970
Cutoff: 50°

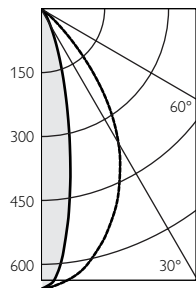
Single unit data

Ceiling height	Initial footcandles	Beam diameter
5'	22	3.5'
6'	15	4.2'
7'	11	4.9'
8'	9	5.6'
9'	7	6.3'

Candela table

Angle	Intensity	Lumens
0	544	
5	523	40
15	401	109
25	247	128
35	73	60
45	10	11
55	2	3
65	1	1

Candela plot

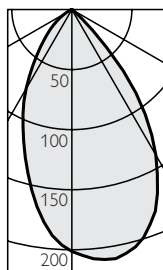


Fixture: C2L04DL30K17R1
Reflector: C2LDLLSCDP
 (integral linear diffusion lens)
Accessory: none
Beam Angle: 63° x 20°
Spacing Ratio: n/a
CBCP: n/a
Lumens: 314
Watts: 10.7
Efficacy (lm/w): 29.3
CCT: 2979
Cutoff: 75°

Candela table

Angle	Intensity (along)	Intensity (across)	Lumens
0	660	660	
5	644	574	28
15	562	216	51
25	434	56	42
35	270	14	25
45	83	5	9
55	11	2	2
65	1	1	0

Candela plot



Fixture: C2L04DL30K17R1
Reflector: C2LLWCCDP
 (integral wall wash lens)
Accessory: none
Beam Angle: 66°
Spacing Ratio: 1.0
CBCP: 217
Lumens: 256
Watts: 10.7
Efficacy (lm/w): 23.9
CCT: 2990
Cutoff: 50°

Candela table

Angle	Intensity (along)	Intensity (across)	Lumens
0	201	201	
5	189	208	9
15	141	205	21
25	96	169	24
35	56	106	19
45	29	24	11
55	12	2	5
65	3	1	1



©2014 Koninklijke Philips N.V. All rights reserved.
 Philips reserves the right to make changes in specifications and/or to discontinue any product at any time without notice or obligation and will not be liable for any consequences resulting from the use of this publication.
philips.com/luminaires

Philips Lighting,
 North America Corporation
 200 Franklin Square Drive,
 Somerset, NJ 08873
 Tel. 855-486-2216

Imported by: Philips Lighting,
 A division of Philips Electronics Ltd.
 281 Hillmount Rd, Markham, ON,
 Canada L6C 2S3
 Tel. 800-668-9008