

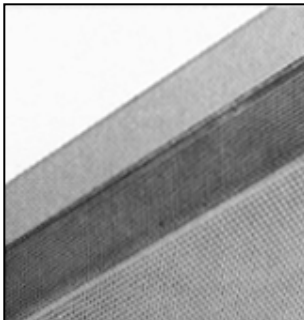
# CBS 232

**CELEBRITY**  
**SURFACE FLUORESCENT**  
**12" WIDTH, 4' LENGTH**  
**2 LAMPS, T8 OR T12**

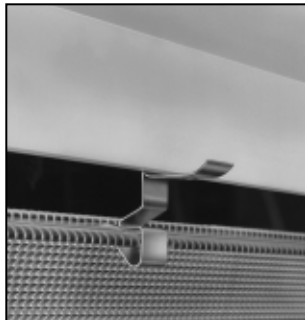
- Injection molded one-piece (2 sides, 2 ends and face) virgin acrylic refractor.
- Catadioptric side and end wall design.
- Slim 3-1/4" depth.
- Invisible spring steel latches align refractor to housing.
- Refractor hinges or latches from either side.
- Efficiency 73.1%.
- Rigid, reinforced housing.
- 1/4 turn fasteners on reflector/ballast cover.
- Individual or continuous row mounting.



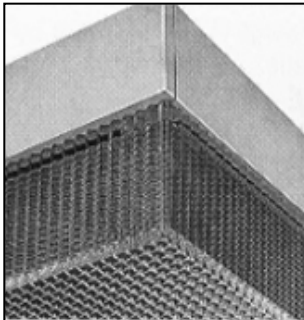
## FEATURES



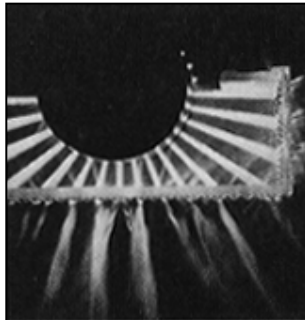
sturdy steel chassis



positive spring steel latches

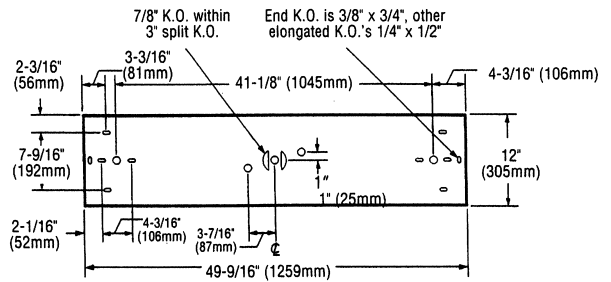
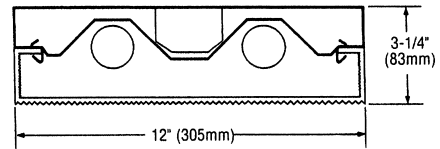


four sided injection molding



photograph illustrates action of Celebrity lens enclosure. catadioptric prisms "mirror" out glare...refract light beams into useful areas.

## DIMENSIONS



NOTE: Not recommended for stem mounting

FIXTURE TYPE \_\_\_\_\_ VOLTS \_\_\_\_\_

JOB INFORMATION: \_\_\_\_\_

**LIGHTOLIER®**

# CBS 232

# CELEBRITY 12" x 4' SURFACE FLUORESCENT

## PHOTOMETRY

MODEL NO. CBS232120SO

LER = FP - 66.2 WATTS - 59.1 BF - 0.88  
Comparative yearly lighting energy cost per 1000 lumens = \$3.62

45 Industrial Way  
Wilmington, MA 01887  
(978) 657-7600

REPORT NO.: G01020      DATE: 05-23-01  
CATALOG NO.: CBS232120SO  
LAMP(S): 2 F32/T8 TL841, EACH RATED 2850 LUMENS.  
LUMINAIRE: WHITE CBS  
0.47 AMP/55.3 WATTS  
TRIAD B2321120

**CANDELA DISTRIBUTION**

0.0	22.5	45.0	67.5	90.0	FLUX
0	1741	1741	1741	1741	1741
5	1730	1734	1733	1738	1741
15	1670	1680	1700	1723	1732
25	1554	1580	1631	1680	1703
35	1384	1405	1461	1525	1560
45	1039	1067	1055	1018	988
55	386	506	560	491	407
65	190	265	194	290	245
75	133	155	155	201	202
85	60	86	90	129	130
90	18	41	52	96	104
95	21	41	52	116	136
105	33	48	56	159	201
115	18	42	54	114	102
125	21	39	59	81	87
135	16	29	52	68	72
145	12	24	42	53	56
155	9	15	25	33	36
165	7	9	11	15	17
175	6	5	4	4	4
180	0	0	0	0	0

**ZONAL LUMEN SUMMARY**

ZONE	LUMENS	%LAMP	%FIXT
0-30	1398	24.5	31.4
0-40	2313	40.6	51.9
0-60	3548	62.3	79.6
0-90	4077	71.5	91.5
90-120	249	4.4	5.6
90-130	301	5.3	6.8
90-150	364	6.4	8.2
90-180	379	6.6	8.5
0-180	4456	78.2	100.0

TOTAL LUMINAIRE EFFICIENCY = 78.2 %  
TOTAL REFLECTANCE OF PAINT = 90.0 %  
CIE TYPE - DIRECT  
PLANE : 0-DEG 90-DEG  
SPACING CRITERIA : 1.3 1.4  
SHIELDING ANGLES : 90 90

LEGEND:  
0-Deg: ————  
45-Deg: - - - -  
90-Deg: \_\_\_\_\_

THIS REPORT IS BASED ON PUBLISHED INDUSTRY PROCEDURES • FIELD PERFORMANCE MAY DIFFER FROM LABORATORY PERFORMANCE

### coefficients of utilization — zonal cavity method (effective floor cavity reflectance 0.20)

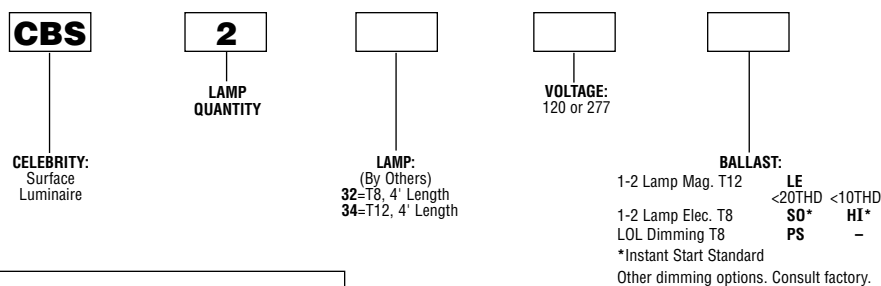
	RF	20			20			20		
	RC	80			50			30		
	RW	70	50	30	50	30	10	50	30	10
room cavity ratio	1	84	81	78	74	72	70	70	68	66
	2	78	72	67	66	62	59	63	60	57
	3	71	64	58	59	55	51	56	53	50
	4	66	58	51	53	49	45	51	47	43
	5	61	52	46	48	43	39	46	42	38
	6	57	47	41	44	39	35	42	38	34
	7	53	43	37	40	35	31	39	34	31
	8	49	39	33	37	32	28	36	31	28
	9	46	36	30	34	29	26	33	28	25
	10	43	34	28	32	27	23	31	26	23

### visual comfort probability (rated lumens per lamp 3150.)

room size		ceiling height				ceiling height			
W	L	8.5	10.0	13.0	16.0	8.5	10.0	13.0	16.0
20	20	69	72	76	77	66	71	76	79
20	30	61	66	70	72	56	62	68	72
20	40	57	61	65	68	49	55	62	66
20	60	52	56	60	64	43	49	54	60
30	20	69	72	77	77	67	73	77	78
30	30	61	65	70	72	56	62	68	71
30	40	55	60	64	66	49	54	60	65
30	60	51	55	59	62	42	48	53	58
30	80	48	52	55	58	38	43	48	53
40	20	69	74	78	78	68	74	78	79
40	30	61	66	70	72	57	63	69	72
40	40	55	60	64	67	50	55	61	65
40	60	50	54	58	61	43	48	53	57
40	80	47	51	54	58	38	43	47	52
40	100	46	49	51	55	36	40	44	48
60	30	61	66	70	73	58	64	70	73
60	40	55	60	64	67	51	56	61	66
60	60	50	54	57	61	43	48	52	58
60	80	46	50	53	57	39	43	47	52
60	100	45	48	50	54	36	40	43	47
100	40	56	61	64	68	54	58	63	68
100	60	51	54	58	62	56	51	54	59
100	80	47	50	53	57	41	45	48	53
100	100	45	48	50	54	37	41	44	48

## ORDERING INFORMATION

Explanation of Catalog Number. Example: CBS232120SO



**ELECTRICAL/WIRING OPTIONS:** Consult factory.

## SPECIFICATIONS:

**PERFORMANCE:** In an installation of 2 lamp 32W luminaires in a room cavity ratio of 1, reflectance 80% ceiling, 50% wall, 20% floor, the C.U. shall not be less than .81. To reduce glare the VCP shall not be less than 43 either lengthwise or crosswise (at 100 fc level) and the average brightness at 65° shall not exceed 1411 footlamberts. To control veiling reflections, luminaire output in the 30°-90° zone shall be not less than 68.6%.

**MATERIALS:** Chassis parts are die-formed code gauge cold rolled steel. **Housing** is reinforced for rigidity. **Refractor**—one-piece virgin acrylic.

**FINISH: Chassis exterior**—white baked polyester enamel. **Cavity**—white baked polyester enamel minimum 86% reflectance. Phosphate undercoating.

**LENS:** One-piece injection molded full re-entrant virgin acrylic with Catadioptric sides, ends and wall design with diamond sharp square base male conical prisms on horizontal surface.

**ELECTRICAL:** Thermally protected class "P" ballast C.B.M. approved, non PCB. If K.O. is within 3" of ballast, use wire suitable for at least 90°.

**LABELS:** I.B.E.W. /UL and C-UL.

We reserve the right to change design, materials and finish in any way that will not alter installed appearance or reduce function and performance.