

PROJECT NAME:	
CATALOG NUMBER:	FIXTURE TYPE:
VOLTS/WATTS:	LAMPS/BOARD:



8' RACK AISLE HIGH BAY - 60W LED

PREMIUM HIGH BAY

FEATURES

- Aluminum Body with Riveted Construction and High Gloss Ployester White Paint
- 95% Enhanced Aluminum Narrow Distribution Reflector
- Multiple Dimming and Sensor Options to Fully Control Occupied and Unoccupied Light Levels
- 5000K Color Temp (Std.)
- 5 Year Warranty
- ETL Damp Listed
- Single Fixture or Cont. Row
- Universal 0-10V Dimmable Driver (Std)
- DesignLights Consortium® Qualified (2)

REPLACES 250W MH



LED SYSTEM

Calculated L70 (TM-21)	>100K ⁽¹⁾
Delivered Lumens	6,114 lm
Total Input Watts	59 W
Luminaire Efficacy Rating (LER)	103 lm/W
Correlated Color Temperature (CCT)	5000 K
Color Rendering Index (CRI)	> 80
Max Ambient Temp	130° F ⁽³⁾
Universal Driver	120-277 V

SUITABLE APPLICATIONS

- Aisle Ways
- Warehouse
- Distribution
- Manufacturing Plant

LED System data above based on RAH8-60WLED-UNIV-5000K

⁽¹⁾ LED Lumen Maintenance Estimates based on TM-21 projections for the light source at 25° C ambient

⁽²⁾ Specific Configurations Listed on DLC. ⁽³⁾ Max ambient temp applies to standard driver installed.

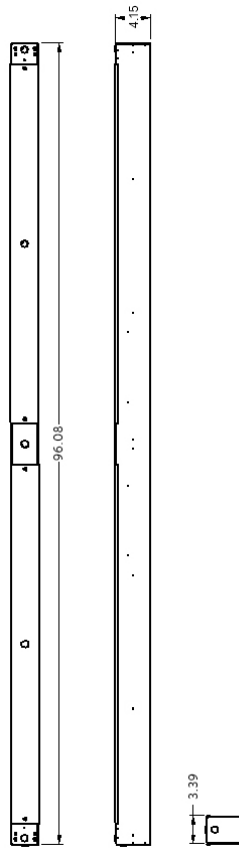


ORDERING GUIDE:

RAH8	60WLED	UNIV	5000K	eg: CORDx		
Series	LED	Driver	Color	Options		
<input type="checkbox"/> RAH8 Aisle Bay 8ft	<input type="checkbox"/> 60WLED	<input type="checkbox"/> UNIV 120-277 Driver	<input type="checkbox"/> 4000K <input type="checkbox"/> 5000K	<input type="checkbox"/> FIOS <input type="checkbox"/> FIOSPC <input type="checkbox"/> USDC <input type="checkbox"/> USBD <input type="checkbox"/> BDxx <input type="checkbox"/> BDxxPC <input type="checkbox"/> DHPC <input type="checkbox"/> PC <input type="checkbox"/> SD480** <input type="checkbox"/> LEDBB <input type="checkbox"/> CLD <input type="checkbox"/> CORDx <input type="checkbox"/> QDCx <input type="checkbox"/> HB-XX-18Y-PAD <input type="checkbox"/> WC	<input type="checkbox"/> On/Off Occupancy Sensor Installed <input type="checkbox"/> On/Off Occupancy Sensor w/ Photocell <input type="checkbox"/> User Selectable Dimming Control <input type="checkbox"/> User Select Bi-level Dim w/ Occ. Sensor <input type="checkbox"/> Preset Bi-level Dim Sensor (xx=% eg. 20,30) <input type="checkbox"/> Preset Bi-level Dim Sensor w/ Photocell <input type="checkbox"/> Daylight Harvesting <input type="checkbox"/> Photocell <input type="checkbox"/> 480V Step Down Transformer <input type="checkbox"/> LED Battery Backup (may reduce max ambient) <input type="checkbox"/> For Below 0° C/32° F Environment <input type="checkbox"/> Cord (X = ft) <input type="checkbox"/> Quick Disconnect Cord (X = ft) <input type="checkbox"/> Y-Toggle Cable System (XX = in) <input type="checkbox"/> 11 Ga Wire Cage	

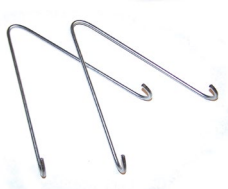
8' RACK AISLE HIGH BAY - 60W LED

PREMIUM HIGH BAY

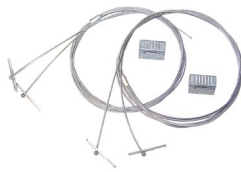


MOUNTING OPTIONS

- **V-Clips** for dual point chain or cable hanging (standard)
- **Y-Toggle Cable Kit** - Includes 2 adjustable cable hangers
- **Fixture Mounting Box (FMB)** - Includes rigid box to attach to the fixture, provides for single point mounting to accept a pendant, hook, or conduit hub (sold separately).



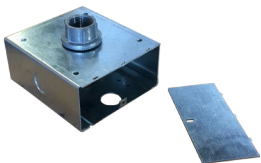
V-Clips



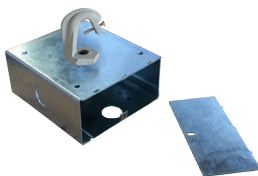
HB-XX-PAD



SMBKIT



FMB and HUB
3/4 CONDUIT



FMB and HOOK

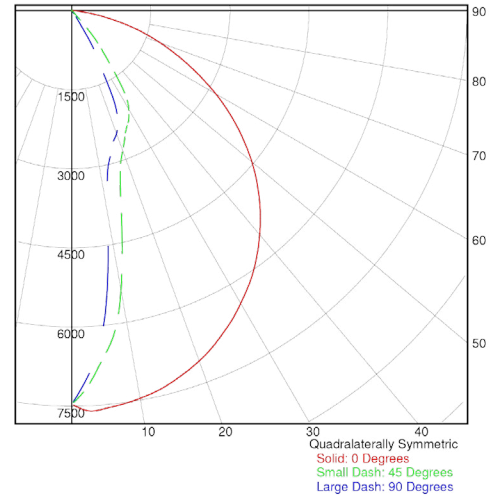
RAH8-60WLED-UNIV-5000K

LUMINAIRE OUTPUT = 6329 LMS
120.0V 0.5013A 59.64W PF=0.992

SUMMARY DATA

HEMISPHERES TESTED:	Lower
EFFICIENCY (Total):	100.0%
EFFICIENCY (Downlight):	100.0%
EFFICIENCY (Uplight):	0.0%
CIE CLASSIFICATION:	DIRECT
SPACING CRITERION: (0-Deg):	1.28
SPACING CRITERION: (90-Deg):	0.35
LUMENS/LAMP:	3036.234
NO. OF LAMPS:	2
LUMINOUS OPENING: RECTANGULAR:	
Width:	0.19 (Feet)
Length:	8.00
Height:	0.00
INPUT WATTS:	59.6

PLANE AND CONE DIAGRAM



Photometric values based upon tests performed in compliance with LM-79. IES files can be downloaded at www.ilp-inc.com

Industrial Lighting Products

lighting facts[®]

A Program of the U.S. DOE

Light Output (Lumens)	5893
Watts	58.78
Lumens per Watt (Efficacy)	100.26
Color Accuracy	
Color Rendering Index (CRI)	80
Light Color	
Correlated Color Temperature (CCT) 5000 (Daylight)	
Warm White	Bright White
2700K	3000K
4500K	6500K

All results are according to IESNA LM-79-2008: *Approved Method for the Electrical and Photometric Testing of Solid-State Lighting*. The U.S. Department of Energy (DOE) verifies product test data and results.

Visit www.lightingfacts.com for the **Label Reference Guide**.

Registration Number: -FCGIJ5 (10/27/2014)
 Model Number: RAH8-60WLED-UNIV-5000K
 Type: Luminaire - Industrial