

PROJECT NAME:	
CATALOG NUMBER:	FIXTURE TYPE:
VOLTS/WATTS:	LAMPS/BOARD:



HIGH BAY FROSTED - 400W LED

PREMIUM HIGH BAY

FEATURES

- Aluminum Body with Steel Channels for Added Rigidity
- Tool-Less Hinged Bottom Ballast Access Doors
- Frosted Acrylic Lens (Std), Polycarbonate Lens Optional
- 95% Enhanced Aluminum Wide Distribution Reflectors (Std), No Reflectors (Recommended)
- High Gloss Polyester White Paint
- Riveted Construction and Vented Ballast Channel
- V-Clips for Dual Point Chain or Cable Hanging (Std)
- Multiple Dimming and Sensor Options to Fully Control Occupied and Unoccupied Light Levels
- 5000K Color Temp (Std)
- 5 Year Warranty
- ETL Damp Listed
- DesignLights Consortium® Qualified ⁽²⁾

REPLACES 1000W MH



LED SYSTEM

Board (LG Chips)	16 x 56
Calculated L70 (TM-21)	93,000 hours
Delivered Lumens	47,797 lm
Total Input Watts	438.5 W
Luminaire Efficacy Rating (LER)	109.0 lm/W
Correlated Color Temperature (CCT)	5000 K
Color Rendering Index (CRI)	> 80
Max Ambient Temp	130° F ⁽³⁾
Universal Driver	120-277 V

SUITABLE APPLICATIONS

- Warehouse
- Distribution
- Manufacturing Plant
- Gymnasium

LED System data above based on HB-400WLED-UNIV-5000K-N-FRL

⁽¹⁾ LED Lumen Maintenance Estimates based on TM-21 projections for the light source at 25°C ambient

⁽²⁾ Specific Configurations Listed on DLC. ⁽³⁾ Max ambient temp applies to standard driver installed.



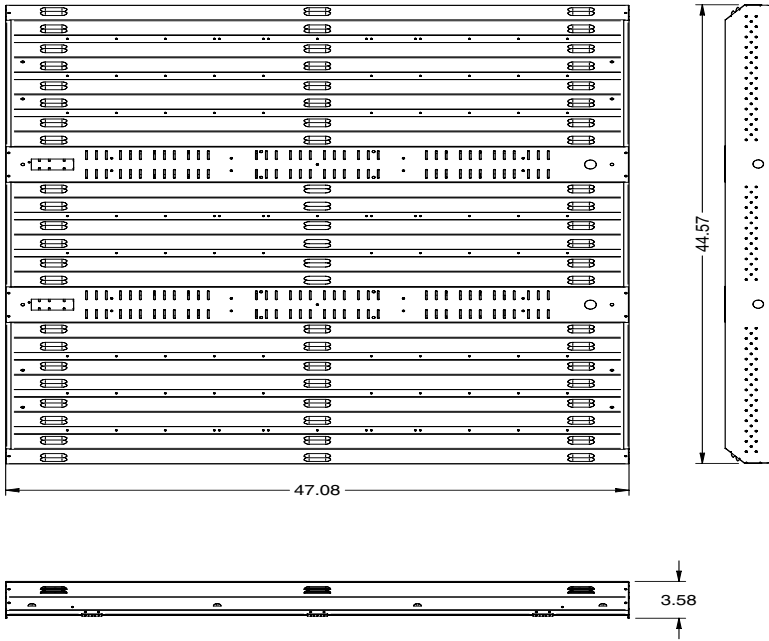
Ordering Guide

HB	400WLED	UNIV	5000K	FRL
Series	LED	Driver	Color	Options
<input type="checkbox"/> HB High Bay 4ft	<input type="checkbox"/> 400WLED 16x56 Board	<input type="checkbox"/> UNIV 120-277 Driver	<input type="checkbox"/> 4000K* <input type="checkbox"/> 5000K* <small>*DLC Listed Config.</small>	<input checked="" type="checkbox"/> FRL* <input type="checkbox"/> PCL <input type="checkbox"/> N* <input type="checkbox"/> DIM <input type="checkbox"/> FIOS <input type="checkbox"/> FIOSPC <input type="checkbox"/> USDC <input type="checkbox"/> USBD <input type="checkbox"/> BDxx <input type="checkbox"/> BDxxPC <input type="checkbox"/> DHPC <input type="checkbox"/> PC <input type="checkbox"/> SD480** <input type="checkbox"/> LEDBB <input type="checkbox"/> CLD <input type="checkbox"/> CORDx <input type="checkbox"/> QDCx <input type="checkbox"/> HB-XX-18Y-PAD <input type="checkbox"/> WC
				Frosted Acrylic Lens Polycarbonate Lens .125" No Reflector (recommended) 0-10V Dimmable Driver On/Off Occupancy Sensor Installed On/Off Occupancy Sensor w/ Photocell User Selectable Dimming Control User Select Bi-level Dim w/ Occ. Sensor Preset Bi-level Dim Sensor (xx=% eg. 20,30) Preset Bi-level Dim Sensor w/ Photocell Daylight Harvesting Photocell 480V Step Down Transformer LED Battery Backup (may reduce max ambient) For Below 0°C/32°F Environment Cord (X = ft) Quick Disconnect Cord (X = ft) Y-Toggle Cable System (XX = in) 11 Ga Wire Cage

**All 347V applications please contact factory for pricing

HIGH BAY FROSTED - 400W LED

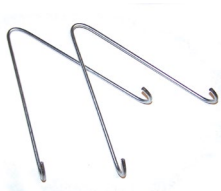
PREMIUM HIGH BAY



MOUNTING OPTIONS

- **V-Clips** for dual point chain or cable hanging (standard)
- **Y-Toggle Cable Kit** - Includes 2 adjustable cable hangers
- **Rigid Center Mount Bracket Kit (RCMBK)**

Includes rigid bracket and screws to attach it to the fixture, provides for single point mounting to accept a pendant, hook, or conduit hub (sold separately).



V-Clips



HB-XX-PAD



RCMBK
(shown with hook)



HUB 3/4
CONDUIT



HOOK

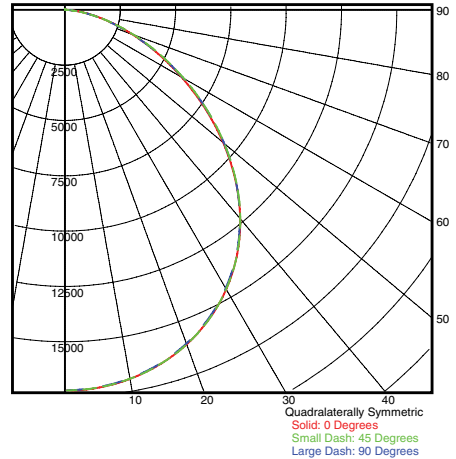
HB-400WLED-UNIV-5000K-N-FRL

LUMINAIRE OUTPUT = 44522 LM
120.0V 3.645A 435.3W PF= 0.995

SUMMARY DATA

HEMISPHERES TESTED:	LOWER
EFFICIENCY (Total):	100.0 %
EFFICIENCY (Downlight):	100.0 %
SPACING CRITERION (0-Deg.):	1.26
SPACING CRITERION (90-Deg.):	1.25
LUMENS/LAMP:	44563.53
NO. OF LAMPS:	1
LUMINOUS OPENING: RECTANGULAR	
Width:	3.04 (Feet)
Length:	3.92
Height:	0.00
INPUT WATTS:	435.3

PLANE AND CONE DIAGRAM



Photometric values based upon tests performed in compliance with LM-79. IES files can be downloaded at www.ilp-inc.com

Industrial Lighting Products

lighting facts[®]

A Program of the U.S. DOE

Light Output (Lumens)	47797
Watts	438.5
Lumens per Watt (Efficacy)	109

Color Accuracy	80
Color Rendering Index (CRI)	

Light Color
Correlated Color Temperature (CCT)

5000 (Daylight)

2700K
3000K
4500K
6500K

All results are according to IESNA LM-79-2008: *Approved Method for the Electrical and Photometric Testing of Solid-State Lighting*. The U.S. Department of Energy (DOE) verifies product test data and results.

Visit www.lightingfacts.com for the **Label Reference Guide**.

Registration Number: -DMZ6YV (1/16/2014)
Model Number: HB-400WLED-UNIV-5000K-FRL
Type: Luminaire - Industrial