

CATALOG #: \_\_\_\_\_

TYPE: \_\_\_\_\_

PROJECT: \_\_\_\_\_

## FEATURES

- Sleek design for direct lighting in stairwells and hallways
- Maximize energy savings with efficacies up to 142 lm/W
- Optional end- or side-mount occupancy sensors provide added energy-efficiency
- Attractive, high-impact frosted acrylic lens
- Heavy-duty 16-gauge C.R.S. spot-welded housing
- Multiple dimming protocols available
- Optional tamper-resistant screws for vandal-prone areas
- Made Right Here® in the USA

## SPECIFICATIONS

- HOUSING – 16-gauge C.R.S.
- SHIELDING – Frosted high-impact acrylic lens, .100" thick.
- FINISH – 92% minimum average reflective white polyester powder coat bonded to phosphate-free, multi-stage pretreated metal. All parts painted after fabrication to facilitate installation, increase efficiency, and inhibit corrosion.
- ELECTRICAL – High quality mid-power LED board. Rated for 50,000 hours at 70% lumen maintenance (L70). 25°C maximum ambient operating temperature.
- MOUNTING – Wall and surface mount.
- LISTINGS –
  - cETLus conforms to UL STD 1598 and UL STD 8750. Certified to CAN/CSA STD C22.2 No. 250.0. Suitable for damp locations.
  - DesignLights Consortium qualified product. Not all versions of this product may be DLC qualified, see the DLC Qualified Products List at [www.designlights.org/QPL](http://www.designlights.org/QPL).
- WARRANTY – 5-year limited warranty, see [hew.com/warranty](http://hew.com/warranty).



## ORDERING EXAMPLE: SLF - 4 - L98/835 - HIA - OPTIONS - DIM - UNV

### ORDERING INFO

SERIES	LENGTH	LUMENS <sup>[1]</sup>	CRI	CCT	SHIELDING	
SLF	2 2'	2'	8 80	27 2700K	HIA	
	4 4'	L13 1,300lm	9 90 <sup>[2]</sup>	30 3000K		
		L26 2,600lm		35 3500K	HIA/TP	
		L45 4,500lm		40 4000K		
		4'	L26 2,600lm			50 5000K
			L52 5,200lm			
		L98 9,800lm				

### OPTIONS<sup>[4]</sup>

EM/10W	10-watt emergency battery <sup>[6]</sup>
EM/10WRM (L___)	Remote mount 10-watt emergency battery <sup>[7]</sup> Additional lower lumen packages available. <sup>[8]</sup> Example: 8,000 lumens = SLF-4-L98/835-(L80)
PSBR/120	Single-circuit bottom-mounted pull switch on right <sup>[9]</sup>
PSBL/120	Single-circuit bottom-mounted pull switch on left <sup>[10]</sup>

### OCCUPANCY SENSORS<sup>[11]</sup>

Passive Infrared (PIR):	
OCCSS SBR-10-___	Line voltage, end mount <sup>[12]</sup>
OCCSS SBR-10-D-___	0-10 VDC dimming, end mount <sup>[13]</sup>
OCCWS FSP-311-L-___	Digital high/low, side mount, 120V or 277V <sup>[14]</sup>
OCCWS FSP-321-L-120-480	Digital high/low, side mount, 120V – 480V <sup>[15]</sup>

### Ultrasonic:

OCCWS FS-505-PP-___	Low voltage, side mount <sup>[16]</sup>
---------------------	-----------------------------------------

### CONTROL<sup>[5]</sup>

DIM	Dimming driver	120 120V
DRV	Non-dimming driver	277 277V
SD40	Step-dimming driver, 40% light output <sup>[17]</sup>	UNV 120-277V
SD50	Step-dimming driver, 50% light output <sup>[18]</sup>	347 347V <sup>[19]</sup>
VRF/DSR	Lutron Vive integral fixture control, RF only (DFCSJ-OEM-RF) and sensor-ready driver	

### VOLTAGE

### ACCESSORIES

TPSN-8 TOOL #8, tamper-resistant snake eyes tool<sup>[20]</sup>

## NOTES

- <sup>1</sup> Lumen output based on 3500 CCT. Actual lumens may vary +/-5%, see page 2 for FIXTURE PERFORMANCE DATA. Additional lumen packages available, see Options.
- <sup>2</sup> Extended lead times may apply. Consult factory for availability.
- <sup>3</sup> Tamper-resistant (TPSN-8) tool is required with HIA/TP option, must be ordered separately, see Accessories.
- <sup>4</sup> See page 3 for FINISH OPTIONS.
- <sup>5</sup> See page 2 for ADDITIONAL CONTROL OPTIONS.
- <sup>6</sup> 4' only.
- <sup>7</sup> 2' only.
- <sup>8</sup> Specify in increments of 100 nominal lumens. Option must be specified with next higher lumen package.
- <sup>9</sup> 120V only.
- <sup>10</sup> 120V only.
- <sup>11</sup> Factory-installed. See page 3 for OCCUPANCY SENSORS DETAILS.
- <sup>12</sup> Must specify 120V, 277V or 480V.
- <sup>13</sup> Must specify 120V, 277V or 480V.
- <sup>14</sup> Must specify lens L2, L3, or L7. Must specify 120V or 277V.
- <sup>15</sup> Must specify lens L2, L3, or L7.
- <sup>16</sup> Must specify 120V, 277V or 347V.
- <sup>17</sup> When specified with occupancy sensor option, one leg of the driver will be tied to the sensor by default.
- <sup>18</sup> When specified with occupancy sensor option, one leg of the driver will be tied to the sensor by default.
- <sup>19</sup> Not available with EM drivers.
- <sup>20</sup> Required with HIA/TP Shielding. Tamper-resistant tool must be ordered separately. Please specify quantity required per project.

## FIXTURE PERFORMANCE DATA

	LED PACKAGE	DELIVERED LUMENS	WATTAGE	EFFICACY (lm/W)
2'	L13	1338	10.1	133.1
	L26	2780	21.3	130.8
	L45	4634	34.4	134.9
4'	L26	2862	20.1	142.2
	L52	5092	37.2	137.0
	L98	9815	74.8	131.3

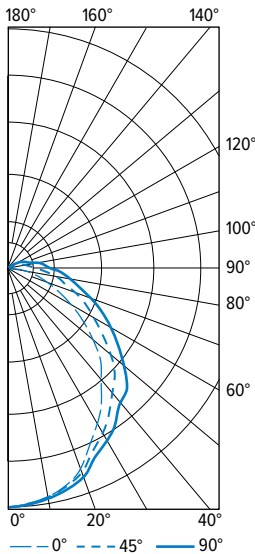
- Photometrics tested in accordance with IESNA LM-79. Results shown are based on 25°C ambient temperature.
- Wattage shown is average for 120V through 277V input.
- Results based on 3500K, 80 CRI, actual lumens may vary +/-5%
- Use multiplier table to calculate additional options.

## MULTIPLIER TABLE

COLOR TEMPERATURE		
	CCT	CONVERSION FACTOR
80 CRI	2700K	0.97
	3000K	0.99
	3500K	1.00
	4000K	1.03
	5000K	1.06
90 CRI	2700K	0.80
	3000K	0.82
	3500K	0.83
	4000K	0.86
	5000K	0.89

## PHOTOMETRY

SLF-4-L98/835-HIA-DIM-UNV Total Luminaire Output: 9815 lumens; 74.8 Watts | Efficacy: 131.3 lm/W | 82 CRI; 3500K CCT



VERTICAL ANGLE	HORIZONTAL ANGLE			ZONAL LUMENS
	0°	45°	90°	
0	3169	3169	3169	
5	3203	3143	3139	299.3
15	3039	3024	3035	853
25	2738	2775	2839	1280
35	2330	2427	2554	1520
45	1839	1995	2200	1541
55	1291	1552	1805	1380
65	794	1139	1375	1098
75	369	746	977	759
85	52	448	672	464
90	6	348	560	
95	2	262	459	273
105	0	140	291	153
115	0	84	190	91
125	0	52	122	53
135	0	32	72	28
145	0	21	43	14
155	0	13	31	6
165	0	0	13	1
175	0	0	0	0
180	0	0	0	

	ZONE	LUMENS	% FIXTURE
LUMEN SUMMARY	0 - 30	2432	25
	0 - 40	3953	40
	0 - 60	6874	70
	0 - 90	8732	89
	90 - 120	9196	94
	90 - 150	517	5
	90 - 180	611	6
	0 - 180	9815	100

## ADDITIONAL CONTROL OPTIONS

Note: Lumen restrictions apply, consult product builder at [hew.com/product-builder](http://hew.com/product-builder).

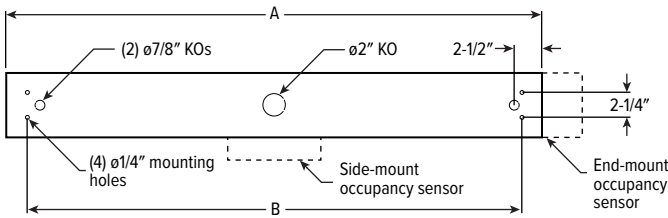
CATALOG NUMBER	DESCRIPTION
DRV	Driver prewired for non-dimming applications
DIM	Dimming driver prewired for 0-10V low voltage applications
DIM1	1% dimming driver prewired for 0-10V low voltage applications
DIM LINE	Line voltage dimming driver (TRIAC and ELV compatible, 120V only)
DIM TRC	Line voltage dimming driver (TRIAC compatible, 120V or 277V only)
SD40	40% step-dimming driver
SD50	50% step-dimming driver
DALI	DALI dimming driver
LTE LINE	Lutron Hi-lume 1% 2-wire dimming driver forward phase line voltage controls (120V only)
LDE1	Lutron Hi-lume 1% EcoSystem dimming LED driver
LDE5	Lutron 5-Series 5% EcoSystem dimming LED driver
ELDO SOLOB	EldoLED Solodrive, 0.1% dimming driver for 0-10V controls
ELDO SOLOB DALI	EldoLED Solodrive, 0.1% dimming driver for DALI controls
ELDO ECO1	EldoLED Ecodrive, 1% dimming driver for 0-10V controls
ELDO ECO1 DALI	EldoLED Ecodrive, 1% dimming driver for DALI controls
VRF/DSR	Lutron Vive integral fixture control, RF only (DFCSJ-OEM-RF) and sensor-ready driver



# SLF LED Surface or Wall Mount Light

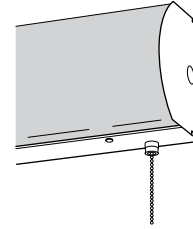
## FIXTURE DETAILS

### BACKVIEW



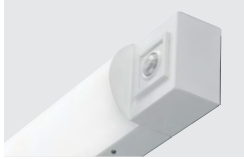
NOMINAL LENGTH	ACTUAL LENGTH (A)	ACTUAL LENGTH (B)
2'	24-5/8"	20-1/2"
4'	48-5/8"	44-1/2"

### PULL SWITCH



## OCCUPANCY SENSORS DETAILS

### END MOUNT SBR-10 SENSOR



### SIDE MOUNT FSP-311/321 | FS-505 SENSORS



### FSP-311 | FSP-321 SENSOR DETAILS

ORDERING EXAMPLE: OCCWS FSP-311 - L2 - 120

#### FEATURES

- Fully adjustable high and low dimmed light levels.
- Designed for LED fixtures; rated for up to 200,000 on/off cycles.
- Hold-off setpoint with automatic calibration option for convenience and added energy savings.
- Adjustable via sensor configuration app.
- Adjustable time delay and cutoff delay.
- Factory set to 10% dimming at 5 minutes, cutoff at 1 hour.

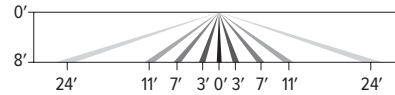
#### SENSOR CONFIGURATION APP

Initial setup and subsequent sensor adjustments are made using the iOS or Android Sensor Configuration App. This app enables adjustment of parameters including high and low modes, sensitivity, time delay, cut off and more. The smartphone app is also used to initiate automatic calibration of the FSP-3x1B ambient light level setpoint. The setpoint is used to hold the controlled lighting off or at low level when there is sufficient daylight. The wireless tool stores an unlimited number of sensor parameter profiles to speed configuration of multiple sensors.

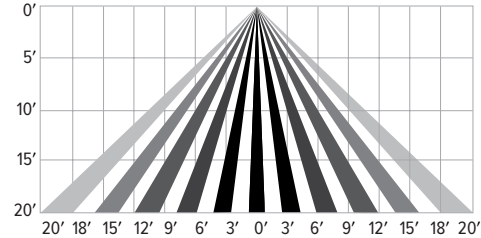
Visit [www.wattstopper.com](http://www.wattstopper.com) for more information.

### LENS COVERAGE PATTERNS

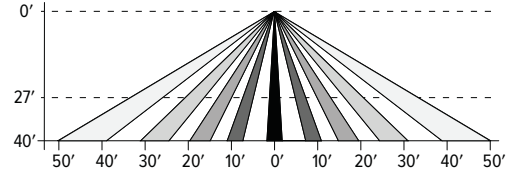
#### L2 Coverage at 8' mounting height: ø48'



#### L3 Coverage at 20' mounting height: ø40'



#### L7 Coverage at 40' mounting height: ø100'



## FINISH OPTIONS

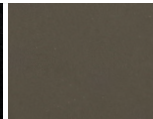
### WHITE



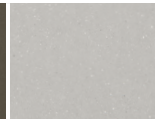
### BLACK



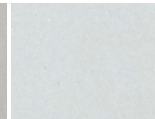
### BRONZE



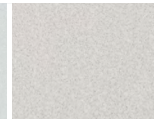
### NICKEL



### SILVER



### ALUMINUM



For custom color, please specify RAL code or a manufacturer code with description. All custom colors other than RAL require two sample swatches, minimum 1" square.

