

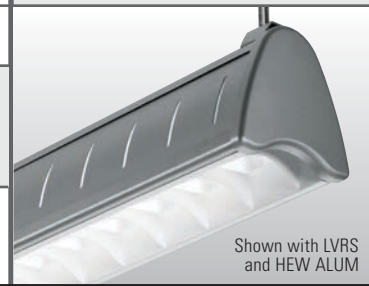
ARCHITECTURAL CONTOURED LOUVER

AXA

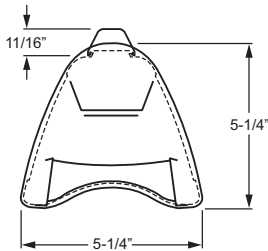
LED

CATALOG #:	TYPE:							
PROJECT:	NOTES:							
EXAMPLE AXA - 4 - L54/835 - LVRS - S - OPTIONS - DIM - UNV								
SERIES	NOMINAL LENGTH	LUMEN PACKAGE	CRI & CCT	SHIELDING	FIXTURE TYPE	OPTIONS	DRIVER	VOLTAGE

SHOP NOW >



CROSS SECTION



ORDERING INFORMATION

SERIES
AXA Architectural Contoured Louver

NOMINAL LENGTH

4	4'
8	8'

LED PACKAGE

EXAMPLE: L54/835			AVERAGE SYSTEM WATTAGE
LUMEN PACKAGE	NOMINAL LUMENS	MINIMUM CRI & CCT	
4' UNIT			
L31	3,100	830 = 82 CRI, 3000K	38
L54	5,400		73
8' UNIT			
L62	6,200	835 = 82 CRI, 3500K	76
L108	10,800		146
			840 = 82 CRI, 4000K

Nominal lumen output based on 3500K CCT. Actual lumens may vary +/- 5%. See specific photometric test. Additional LED lumen packages available, consult factory.

SHIELDING
 See right for shielding details.

LVRS White curved baffle louver with matte white acrylic overlay and slotted uplight (3%)

LVRD White curved baffle louver with matte white acrylic overlay and graduated linear dot uplight (3%)

LVRC White curved baffle louver with matte white acrylic overlay and closed side panels

FIXTURE TYPE

F Electrical feeder unit, 3-conductor straight white cord standard (wire gauge to be determined by row length), quick-connect wiring harness, two end plates (one installed)

J Joiner unit, no cord, quick-connect wiring harness, no end plates

S Stand-alone unit, 3-conductor straight white cord standard, two end plates installed

OPTIONS
 For **color options**, visit the AXA online at hew.com.

EM/10WLP Low-profile 10-watt emergency LED driver, maximum nominal 700 lumens module output in EM mode.

(L__) Additional lower lumen packages available. Specify in increments of 100 nominal lumens. Option must be specified with next *higher* lumen package.
Example: 4,000 nominal lumens = AXA-4-L54/835-LVRS-S-(L40)

C2_ Two-circuit quick-connect wiring harness (see Information section for complete quick-connect offering)

FINISH OPTIONS
 For details, see AXA custom color options at hew.com

White (Standard) **Black**
Bronze **Nickel**
Silver **Aluminum**

ACCESSORIES

ACF/48 48" adjustable aircraft cable
ACF/96 96" adjustable aircraft cable

DRIVER

DRV Driver prewired for non-dimming applications
DIM Driver prewired for 0-10V low-voltage dimming applications

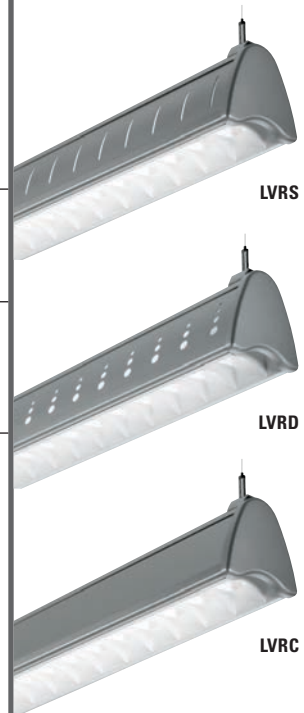
VOLTAGE

120 120V
277 277V
UNV 120-277V

FEATURES

- ▶ Contoured housing, end caps and louver provide an attractive source of direct lighting.
- ▶ Design elements on side panels add interest while producing subtle uplight.
- ▶ Moveable mounting hardware slides easily along the length of the fixture providing variable mounting points.
- ▶ Heavy-duty construction features extruded aluminum housing and die-cast end caps.
- ▶ Contoured aluminum louvers improve aesthetics while shielding LEDs from view.
- ▶ White louver finish improves fixture efficiency.
- ▶ LED technology provides high efficacy and energy efficiency.
- ▶ Rated for 50,000 hours at 70% lumen maintenance (L70).
- ▶ Minimum 82 CRI; 3000K, 3500K, 4000K CCT.
- ▶ This fixture is proudly made in the USA.

FIXTURE STYLES



LED

Catalog #: AXA-4-L54/835-LVRS-DIM-UNV

SPECIFICATIONS

Housing – Extruded aluminum with die-cast end caps.

Shielding – Highly reflective white curved baffle louver with matte white acrylic overlay.

Finish – Textured matte white polyester TGIC powder coat bonded to phosphate-free, multi-stage pretreated metal. All parts painted after fabrication to facilitate installation, increase efficiency, and inhibit corrosion.

Electrical – High quality mid-power LED boards. L70 at 50,000 hours.

Mounting – Suspended. 1/16" diameter x 24" adjustable steel leveling aircraft cable and mounting hardware necessary for grid ceiling applications provided.

Labels – cCSAus certified as luminaire suitable for dry or damp locations.

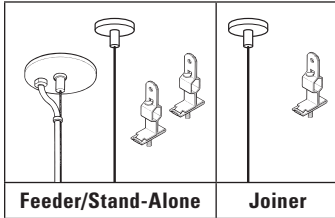
Warranty – 5-year limited fixture warranty, see www.hew.com/warranty.

IMPORTANT:

Electrostatic sensitive unit. Observe precautions when handling.

STANDARD HARDWARE

(grid ceiling applications)

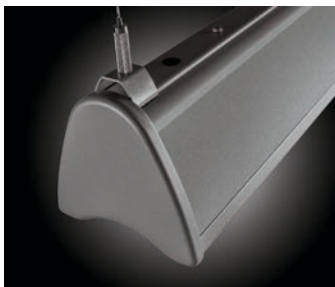


Notes:

- Fixtures are provided with adjustable length aircraft cables and choice of T-bar (standard) or optional hard pan ceiling hardware, must specify. See Fluorescent Information section for details.
- Electrical supply is brought into the feeder fixture, either as part of a row or as an individual mount unit.

AIRCRAFT CABLE DETAIL

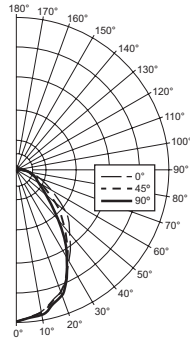
Mounting brackets can be positioned anywhere along the length of the fixture housing. It is recommended to locate mounting brackets no more than 8" away from the end plates of the fixture.



PHOTOMETRY

TEST REPORT INFORMATION

- ▶ Test Report #: 18718.0
- ▶ Date: 02/19/15
- ▶ Lamp Type: LED
- ▶ **Rated Lumens: 5443**
- ▶ **Watts: 73.2**
- ▶ **Lumens Per Watt: 74.3**
- ▶ **CRI: 82**
- ▶ **CCT: 3514K**



CANDLEPOWER DISTRIBUTION

Vertical Angle	Horizontal Angle			Zonal Lumens
	0°	45°	90°	
0°	3021.	3021.	3021.	
5°	2933.	2938.	2953.	280.7
15°	2685.	2704.	2759.	768.7
25°	2287.	2267.	2294.	1053.4
35°	1814.	1691.	1564.	1060.2
45°	1421.	1166.	895.	897.0
55°	903.	638.	528.	609.3
65°	499.	370.	366.	395.7
75°	212.	191.	181.	204.7
85°	62.	56.	57.	62.2
90°	6.	12.	15.	
95°	1.	10.	14.	9.3
105°	2.	11.	15.	10.6
115°	6.	15.	17.	13.1
125°	12.	21.	23.	17.6
135°	14.	23.	24.	16.2
145°	23.	28.	28.	16.9
155°	28.	33.	31.	14.4
165°	30.	35.	35.	9.8
175°	31.	31.	30.	3.0
180°	30.	30.	30.	

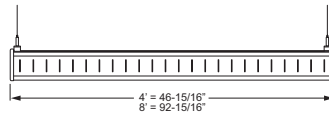
LUMEN SUMMARY

Zone	Lumens	% Fixture
0° - 30°	2103.	38.6
0° - 40°	3163.	58.1
0° - 60°	4669.	85.8
0° - 90°	5332.	98.0
90° - 120°	33.	.6
90° - 150°	84.	1.5
90° - 180°	111.	2.0
Total Luminaire:		
0° - 180°	5443.	100.0

IES Spacing Criteria: End = 1.0
Diagonal = 1.0
Across = 1.0

FIXTURE DETAILS

SIDE VIEW



CONTINUOUS ROW FIXTURES

When row mounting fixtures, joint between fixtures will be visible at 4' or 8' intervals depending on fixture length.

