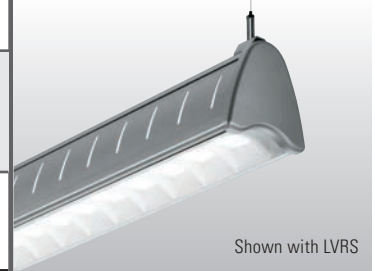


ARCHITECTURAL CONTOURED LOUVER

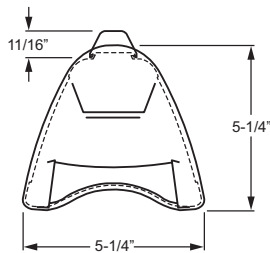
AXA

LED

CATALOG #:	TYPE:								
PROJECT:	NOTES:								
EXAMPLE → AXA - 4 - L54/835 - LVRS - S - AC/D48 - OPTIONS - DIM - UNV									
SERIES	NOMINAL LENGTH	LUMEN PACKAGE	CRI & CCT	SHIELDING	FIXTURE TYPE	MOUNTING	OPTIONS	DRIVER	VOLTAGE



CROSS SECTION



ORDERING INFORMATION

SERIES
AXA Architectural Contoured Louver

NOMINAL LENGTH

4	4'
8	8'

LED PACKAGE

EXAMPLE: L54/835			AVERAGE SYSTEM WATTAGE
LUMEN PACKAGE	NOMINAL LUMENS	MINIMUM CRI & CCT	
4'			
L31	3,100	830 = 82 CRI, 3000K 835 = 82 CRI, 3500K 840 = 82 CRI, 4000K	38
L54	5,400		73
8'			
L62	6,200		76
L108	10,800		146

Nominal lumen output based on 3500K CCT. Actual lumens may vary +/- 5%, see specific photometric tests. Additional LED lumen packages available, see options.

SHIELDING
 See right for shielding details.

LVRS White curved baffle louver with matte white acrylic overlay and slotted uplight (3%)

LVRD White curved baffle louver with matte white acrylic overlay and graduated linear dot uplight (3%)

LVRC White curved baffle louver with matte white acrylic overlay and closed side panels

FIXTURE TYPE

F Electrical feeder unit, 3-conductor straight white cord standard (wire gauge to be determined by row length), quick-connect wiring harness, two end plates (one installed)

J Joiner unit, no cord, quick-connect wiring harness, no end plates

S Stand-alone unit, 3-conductor straight white cord standard, two end plates installed

MOUNTING
 See back for details.

EXAMPLE: AC/D48		
MOUNTING	TYPE	LENGTH
AC/ = Aircraft	D = 1' grid & hardpan	24 = 24"
	N = 9/16" grid	48 = 48"
	S = Slot grid	96 = 96"

OPTIONS
 For color options, visit the AXA online at hew.com.

EM/10W REMOTE Remote mount emergency LED battery (4' only), see back for details.

EM/10WLP Low-profile 10-watt emergency LED battery (8' only).

(L__) Additional lower lumen packages available. Specify in increments of 100 nominal lumens. Option must be specified with next higher lumen package.
Example: 4,000 nominal lumens = AXA-4-L54/835-LVRS-S-(L40)

C2_ Two-circuit quick-connect wiring harness (see [Technical Info](#) for complete quick-connect offering)

FINISH OPTIONS

White (Standard)	Black
Bronze	Nickel
Silver	Aluminum

DRIVER

DRV Driver prewired for non-dimming applications

DIM 10% dimming driver prewired for 0-10V low voltage applications

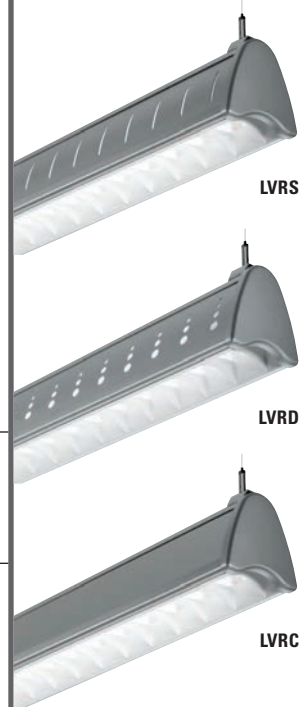
VOLTAGE

120	120V
277	277V
UNV	120-277V

FEATURES

- ▶ Contoured housing, end caps and louver provide an attractive source of direct lighting.
- ▶ Design elements on side panels add interest while producing subtle uplight.
- ▶ Moveable mounting hardware slides easily along the length of the fixture providing variable mounting points.
- ▶ Heavy-duty construction features extruded aluminum housing and die-cast end caps.
- ▶ Contoured aluminum louvers improve aesthetics while shielding LEDs from view.
- ▶ White louver finish improves fixture efficiency.
- ▶ LED technology provides high efficacy and energy efficiency.
- ▶ Rated for 50,000 hours at 70% lumen maintenance (L70).
- ▶ Minimum 82 CRI; 3000K, 3500K, 4000K CCT.
- ▶ This fixture is proudly made in the USA.

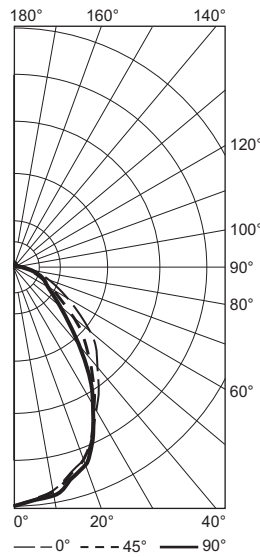
FIXTURE STYLES



LED

PHOTOMETRY

AXA-4-L54/835-LVRS-DIM-UNV Report #: 18718.0; 02/19/15 | Total Luminaire Output: 5443 lumens; 73.2 Watts
 Efficacy: 74.3 lm/W | 82 CRI; 3514K CCT | IES Spacing Criteria: End: 1.0, Across: 1.0, Diagonal: 1.0



Vertical Angle	Horizontal Angle			Zonal Lumens
	0°	45°	90°	
0	3021	3021	3021	
5	2933	2938	2953	280.7
15	2685	2704	2759	768.7
25	2287	2267	2294	1053.4
35	1814	1691	1564	1060.2
45	1421	1166	895	897.0
55	903	638	528	609.3
65	499	370	366	395.7
75	212	191	181	204.7
85	62	56	57	62.2
90	6	12	15	
95	1	10	14	9.3
105	2	11	15	10.6
115	6	15	17	13.1
125	12	21	23	17.6
135	14	23	24	16.2
145	23	28	28	16.9
155	28	33	31	14.4
165	30	35	35	9.8
175	31	31	30	3.0
180	30	30	30	

	Zone	Lumens	% Fixture
LUMEN SUMMARY	0 - 30	2103	38.6
	0 - 40	3163	58.1
	0 - 60	4669	85.8
	0 - 90	5332	98.0
	90 - 120	33	0.6
	90 - 150	84	1.5
	90 - 180	111	2.0
	0 - 180	5443	100.0

SPECIFICATIONS

Housing – Extruded aluminum with die-cast end caps.

Shielding – Highly reflective white curved baffle louver with matte white acrylic overlay.

Finish – Textured matte white polyester TGIC powder coat bonded to phosphate-free, multi-stage pretreated metal. All parts painted after fabrication to facilitate installation, increase efficiency, and inhibit corrosion.

Electrical – High quality mid-power LED boards. L70 at 50,000 hours.

Mounting – Suspended. 1/16" diameter x 24" adjustable steel leveling aircraft cable and mounting hardware necessary for grid ceiling applications provided.

Labels – cCSAus certified as luminaire suitable for dry or damp locations.

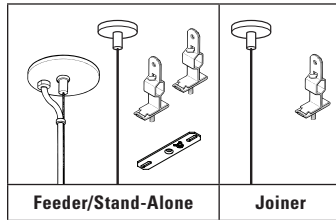
Warranty – 5-year limited warranty, see www.hew.com/warranty.

IMPORTANT:

Electrostatic sensitive unit. Observe precautions when handling.

STANDARD HARDWARE

(Grid and Hardpan)

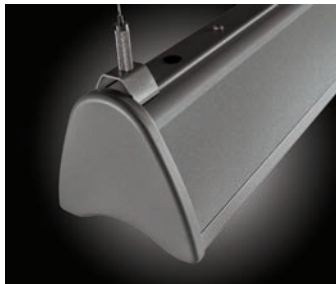


Notes:

- Fixtures are provided with adjustable length aircraft cables and mounting hardware, must specify.
- Electrical supply is brought into the feeder fixture, either as part of a row or as a stand-alone unit. Joiner fixtures complete the row.

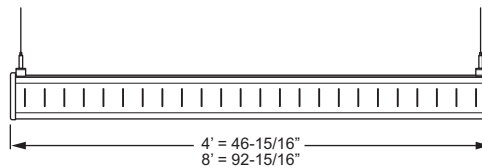
AIRCRAFT CABLE DETAIL

Mounting brackets can be positioned anywhere along the length of the fixture housing. It is recommended to locate mounting brackets no more than 8" away from the end plates of the fixture.

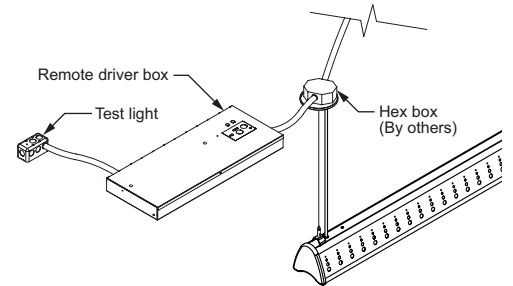


FIXTURE DETAILS

SIDE VIEW



EM/10W REMOTE



CONTINUOUS ROW FIXTURES

When row mounting fixtures, joint between fixtures will be visible at 4' or 8' intervals depending on fixture length.

