

FINELITE

Series 17 LED ADA WM Technical Sheet



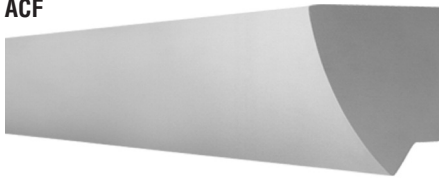
Date

Project

Type

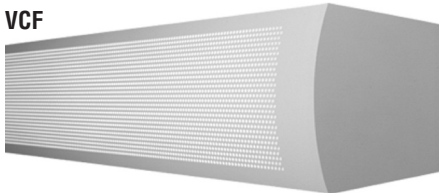
Comments

ACF



Angled Curved Fascia - Solid (SF)

VCF

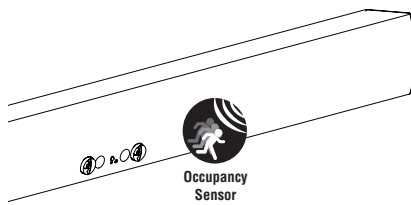


Vertical Curved Fascia - Perforated (PF)

Signal White is standard finish

DESCRIPTION

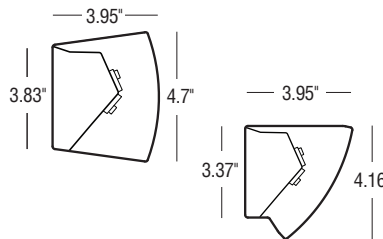
Light up corridors, stairwells and reception areas without glare and in high style with Series 17 LED ADA Wall Mount luminaires. Choose from Angled Curved Fascia (ACF) or Vertical Curved Fascia (VCF) in solid or perforated design. Series 17 LED uses mid-powered LEDs for long life and evenly distributed illumination. RoHS compliant.



Occupancy Sensor

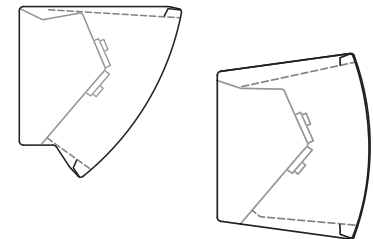
INTEGRATED SENSORS:

Each unit is available with an optional integrated ultrasonic occupancy sensor.



DIMENSIONS AND LIGHT ENGINE:

Extending less than 4" from the wall, Series 17 is ADA compliant and uses mid-powered LEDs yielding long life and even light distribution.

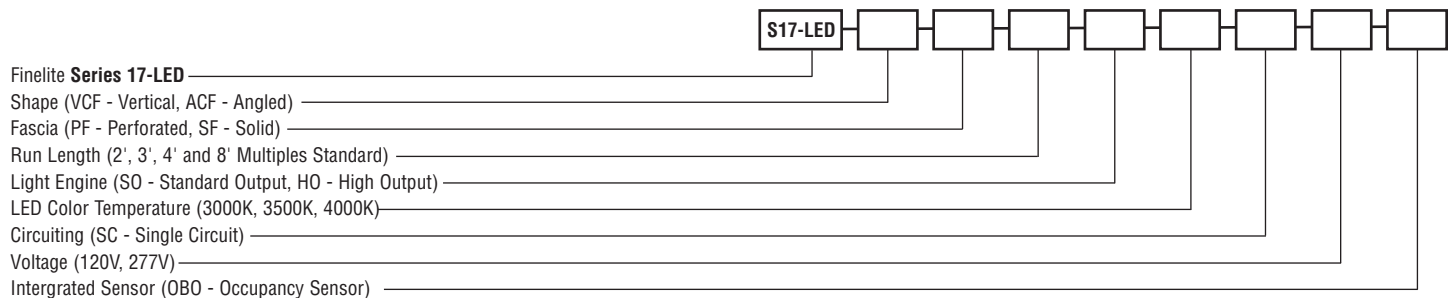


DIFFUSERS:

Standard with frosted acrylic diffuser at the top and bottom openings.

ORDERING GUIDE

Sample Number: S17-LED - VCF - PF - 4' - SO - 3500K - SC - 277 - OBO

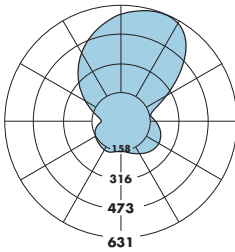


FINELITE

Series 17 LED ADA WM Technical Sheet

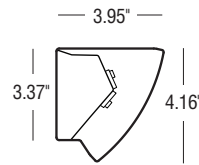
PHOTOMETRY

ACF High Output
 Efficacy: 67.3 Lumens per watt
 Total Luminaire Output: 2475 lumens (614 lumens/foot)
 36.8 watts (9.2 watts/foot)
 Peak Candela Value: 631 @ 155
 CRI: 84
 R9: 22
 CCT: 3500K
 ITL LM79 Report 78716



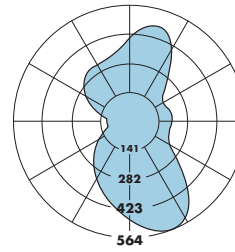
lighting facts [®]	
Light Output (Lumens)	2475
Watts	36.8
Lumens per Watt (Efficacy)	67
Color Accuracy Color Rendering Index (CRI)	84
Light Color Correlated Color Temperature (CCT)	3688 (Bright White)

All results are according to IESNA LM-79-2008. Approval Method for the Electrical and Photometric Testing of Solid-State Lighting. The U.S. Department of Energy (DOE) verifies product test data and results.
 Visit www.lightingfacts.com for the Label Reference Guide.
 Registration Number: D10P-C00485 (12/17/2013)
 Model Number: S17LED-ACF-PP-3-LED-40-3000K
 Type: Luminaire - Linear



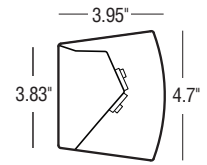
PHOTOMETRY

VCF High Output
 Efficacy: 74.7 Lumens per watt
 Total Luminaire Output: 2719 lumens (680 lumens/foot)
 36.4 watts (9.1 watts/foot)
 Peak Candela Value: 561 @ 25°
 CRI: 84
 R9: 22
 CCT: 3500K
 ITL LM79 Report 78717



lighting facts [®]	
Light Output (Lumens)	2475
Watts	36.8
Lumens per Watt (Efficacy)	67
Color Accuracy Color Rendering Index (CRI)	84
Light Color Correlated Color Temperature (CCT)	3688 (Bright White)

All results are according to IESNA LM-79-2008. Approval Method for the Electrical and Photometric Testing of Solid-State Lighting. The U.S. Department of Energy (DOE) verifies product test data and results.
 Visit www.lightingfacts.com for the Label Reference Guide.
 Registration Number: D10P-C00485 (12/17/2013)
 Model Number: S17LED-ACF-PP-3-LED-40-3000K
 Type: Luminaire - Linear



CANDLEPOWER SUMMARY						
	0	45.0	90.0	135.0	180.0	Flux
0	161	161	161	161	161	
5	162	161	161	163	163	15
15	168	161	153	163	169	46
25	187	163	137	155	165	73
35	211	167	115	141	153	95
45	235	170	89	126	146	111
55	251	171	62	112	139	121
65	256	165	39	97	128	122
75	247	152	20	79	111	114
85	226	132	5	63	92	98
90	211	119	0	53	81	
95	196	108	16	58	85	89
105	199	147	77	82	102	122
115	273	237	160	145	146	187
125	395	356	254	221	213	254
135	528	472	351	299	286	294
145	611	553	438	375	358	288
155	631	589	504	442	422	237
165	618	598	548	501	483	155
175	587	584	569	549	539	54
180	570	570	570	570	570	

CANDLEPOWER SUMMARY						
	0	45.0	90.0	135.0	180.0	Flux
0	479	479	479	479	479	
5	502	494	477	459	452	45
15	550	520	457	413	400	132
25	561	518	417	362	349	201
35	498	472	358	307	299	239
45	367	380	286	250	247	235
55	252	265	210	194	196	200
65	206	171	136	141	148	156
75	197	124	72	92	109	118
85	204	113	21	76	112	100
90	206	114	0	73	113	
95	207	116	10	73	113	100
105	198	113	52	123	160	123
115	185	131	111	179	220	155
125	193	186	179	229	271	185
135	245	271	250	266	304	205
145	347	370	314	290	315	203
155	449	440	362	311	315	172
165	477	455	391	339	327	112
175	435	426	404	380	368	38
180	405	405	405	405	405	

SPECIFICATIONS

CONSTRUCTION: Fixture channel is 6063-T6 extruded aluminum. Fascia covers are die-formed 20-gauge steel. Mounting clips are constructed from 22-gauge die-formed steel. All components are hard-tooled to tolerances of +/- 0.010".

ENDCAPS: Flat endcap, 14-gauge die-formed steel, adds 0.1" to each end.

OPTICS: 96W standard reflector, die-formed painted steel, 96% reflectance white finish. Virgin acrylic UV stabilized lensed diffuser behind perforated fascia is standard.

DIFFUSERS: Standard with top 0.080" and bottom 0.060" frosted acrylic diffusers

LIGHT ENGINE: Light engine is made up of high performance mid-powered LEDs and is designed to distribute heat properly to maximize the life of the LED. LED color temperature: 3000K, 3500K, 4000K.

DRIVER: High performance Constant Current Reduction (CCR) driver standard. Can be wired as dimming or non-dimming. Dimming is compatible with 0-10V controls with a range of 10%-100%. Driver is fully accessible. Power Factor: ≥0.9. Total Harmonic Distortion (THD) <20%. Expected driver lifetime:

100,000 hours. Lutron driver options: Lut3W - 3-wire driver, LutES - EcoSystem driver, Lut2W - 2-wire driver. *Driver is wired for dimming or non-dimming. Dimming is compatible with 0-10v controls with a range of 100-10%. Separate dimming for uplight and downlight.

LUMEN MAINTENANCE: Series 17 LED is rated to deliver 90% lumen maintenance (L90) to 100,000 hours and 70% lumen maintenance (L70) to 168,000 hours.

ELECTRICAL: 120V or 277V prewired. In accordance with NEC Code 410.73 (G), this luminaire contains an internal driver disconnect. Emergency to generator/inverter wiring, internal generator transfer switch, nightlight wiring. Optional low profile battery pack available. Battery pack delivers 800 lumens (ACF) or 1400 (VCF). Minimum luminaire length for battery pack: 8'. The downlight always will be illuminated in the 4' section.



INTEGRATED SENSORS: Series 17 LED can be specified with integrated ultrasonic occupancy sensors.

MOUNTING: Standard with mounting clips to the wall and not visible from normal viewing angles once

installed. One mounting clip is provided for every 16 inches of luminaire for a secure connection to the wall. Luminaire is snapped into place on the mounting clips and secured using locking screws.

FEED: 18 gauge wire standard. 14 gauge wire is used when current exceeds 6 amps. Optional feed uses cord.

FINISHES: Finelite Signal White is standard. Optional adders: 185 finishes available from Tiger Drylac's RAL color chart.

LENGTHS: Modular section lengths of 2', 3', 4' and 8' section lengths can be combined to make longer runs. Contact factory for additional lengths.

LABELS: Fixture and electrical components are ETL listed conforming to UL 1598 in the U.S.A., and Canada; ETL listed to certified CAN/CSA C22.2 No. 250.0. Fixtures will bear ETL labels. Damp location.

WEIGHT: Fixture weight = 2 lb/ft.

WARRANTY: Series 17 LED comes standard with a 10-year warranty on all standard components. Optional accessories such as emergency battery packs are covered by their individual manufacturer warranties.