

IMPORTANT SAFEGUARDS

When using electrical equipment, basic safety precautions should always be followed including the following:

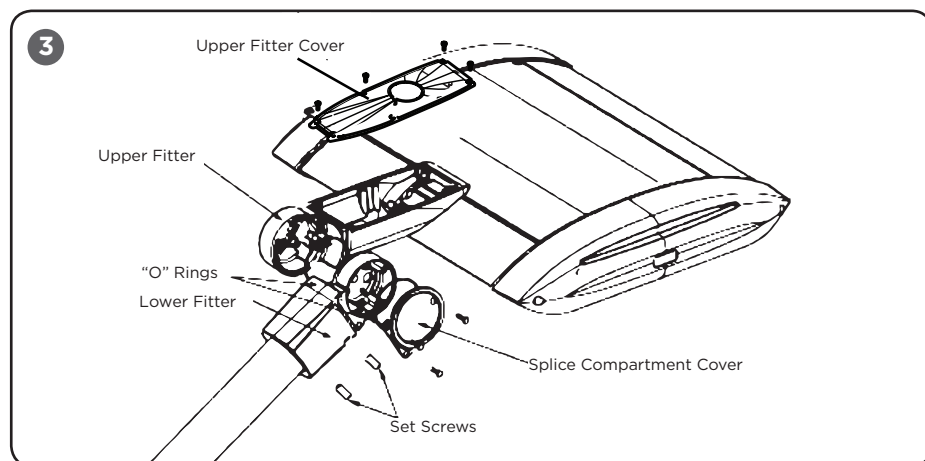
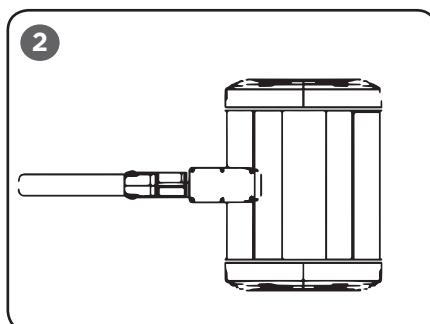
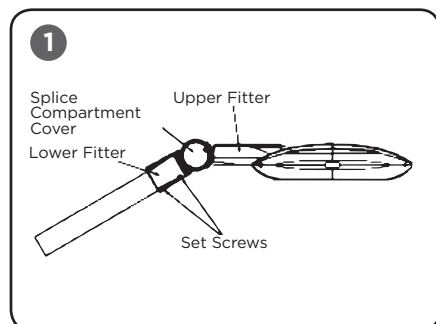
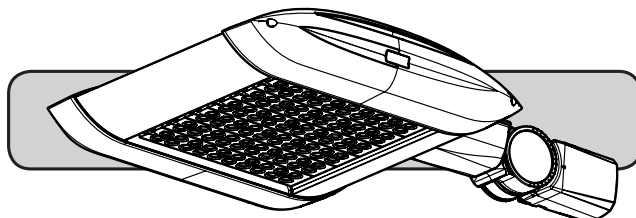
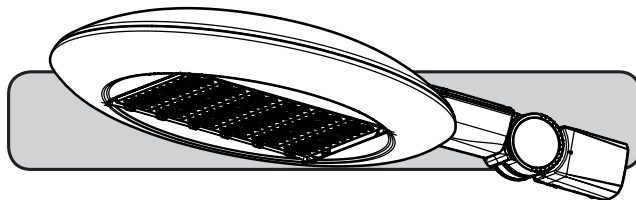
READ AND FOLLOW ALL SAFETY INSTRUCTIONS

1. To avoid the possibility of electrical shock, turn off power supply before installation or servicing. Installation and servicing should be performed by qualified personnel.
2. When handling, hold fixture on sides to prevent damage to the top screen or LED's and take care to keep LED lenses clean during installation.
3. Product must be installed in accordance with NEC or your local electrical code. If you are not familiar with these codes and requirements, consult a qualified electrician.
4. **STRAIN RELIEF IS REQUIRED** for electrical connections on 2" (51 mm) adjustable fitter mounts at heights of 25' (7.6 m) and above. Tie a knot in the supply wires above the hole in the lower fitter wiring compartment to reduce the strain on the connections. Make sure knot will not slip through hole.
5. The supply wiring (to be supplied by customer) may be connected either in the fitter compartment or directly to the terminal strip. See the appropriate section below for the desired method.

SAVE THESE INSTRUCTIONS FOR FUTURE REFERENCE

TO INSTALL:

INSTALLATION INSTRUCTIONS



MOUNTING - WIRE CONNECTIONS IN FITTER COMPARTMENT

STEP 1:

Remove the splice compartment cover from the lower fitter. See **Figure 1 and 3.**

STEP 2:

Route the fixture power supply wires, coming from the terminal strip, into the lower fitter and assemble the lower fitter onto the upper fitter using the 3/8" bolt provided. Make sure not to pinch the O-ring between the fitters. See **Figure 1 and 3.**

STEP 3:

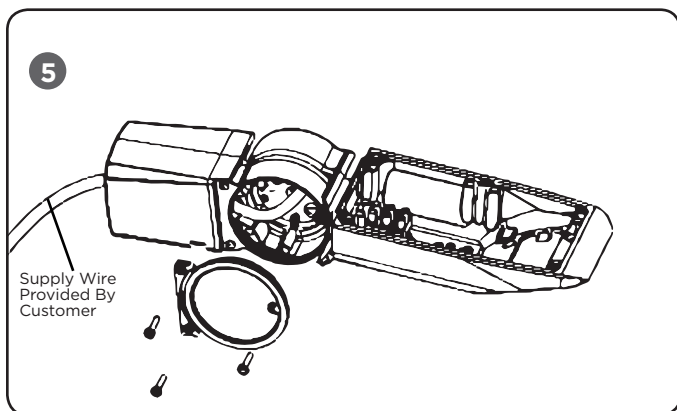
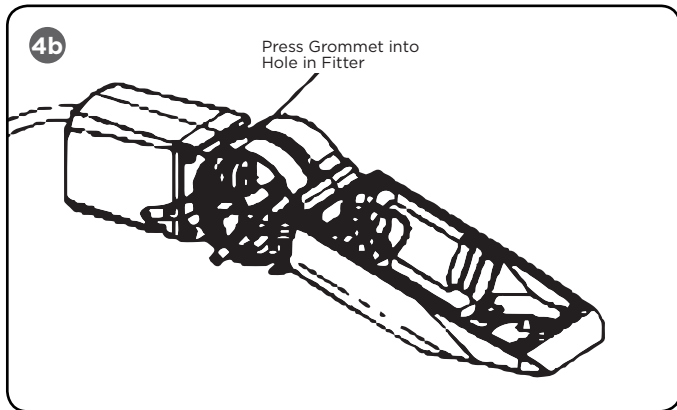
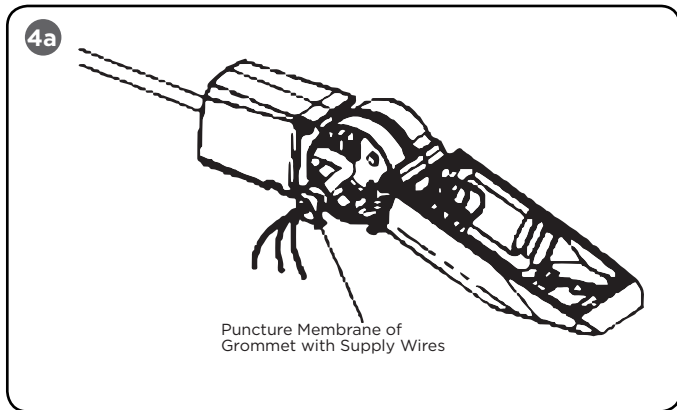
Route the supply wires into the lower fitter wiring compartment by puncturing the internal seal with the supply wires.

STEP 4:

Strain relief is required for electrical connections on the adjustable fitter mount for mount heights of 25' (7.6 m) and higher. Tie a knot in the supply wires above the hole in the lower fitter wiring compartment to reduce the strain on the connections. Make sure knot will not slip through hole.

STEP 5:

Slip lower fitter over 2-3/8" (60 mm) O.D. heavy wall pipe or tenon and securely tighten two Allen head set screws with 3/16" Allen wrench to 18 ft. lbs. (24 N•m). See **Figure 3.**



STEP 6:

Make wire connections in splice compartment of adjustable fitter. See **Figure 4a and 4b**.

NOTE: Reference the wiring diagrams on page 3 (Phase to Neutral or Phase to Phase) based on the supply circuit.

MOUNTING-WIRE CONNECTIONS DIRECT TO TERMINAL STRIP

IMPORTANT: Damage to fixture will result when improper voltage is applied. Verify fixture is suitable for supply voltage by checking electrical label on fixture.

STEP 1:

Remove the splice compartment cover from the lower fitter.

STEP 2:

Route the supply wires into the lower fitter wiring compartment by puncturing the internal seal with the supply wires.

STEP 3:

Strain relief is required for electrical connections on the adjustable fitter mount for mount heights of 25' (7.6 m) and higher. Tie a knot in the supply wires above the hole in the lower fitter wiring compartment to reduce the strain on the connections. Make sure knot will not slip through hole.

STEP 4:

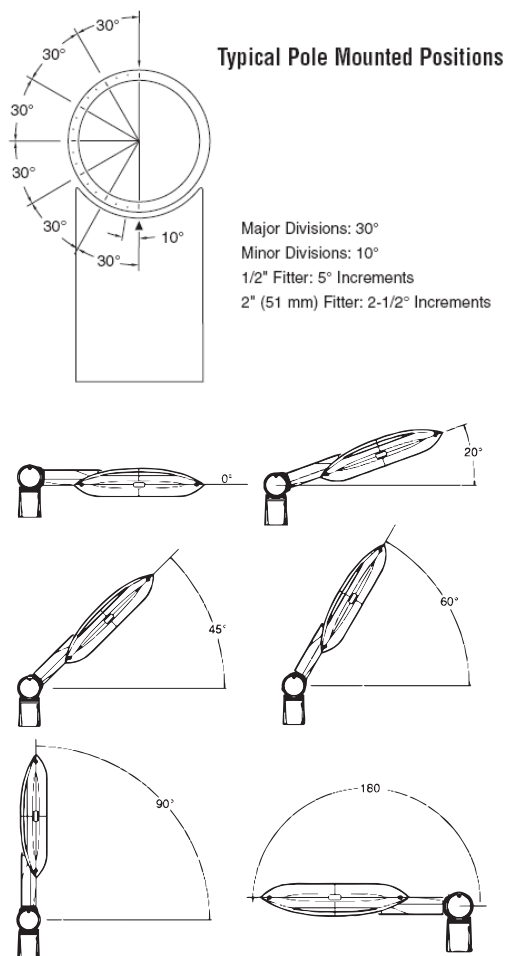
Continue routing the supply wires through the upper fitter and into the fixture arm to the terminal strip. See **Figure 5**.

STEP 5:

Insert supply wires into the appropriate terminal connection.

6

1/2" and 2" (51mm) Adjustable Fitter Positions



NEMA RECEPTACLE (OPTIONAL)

STEP 1:

Loosen two flat head screws holding NEMA receptacle to housing a few turns.

STEP 2:

Locate the N symbol on receptacle, representing north.

STEP 3:

Rotate N approximately north, some photo controls operate best somewhere between NW and NE.

STEP 4:

Once orientation of receptacle is complete, tighten screws from **Step 1**.

STEP 5:

Install photo control (supplied by customer).

FIXTURE AIMING

STEP 1:

Adjust fixture to desired aiming angle. The fixture may be aimed at 2-1/2° increments. Markings are located on outside of fitter for ease of aiming. See **Figure 6**.

STEP 2:

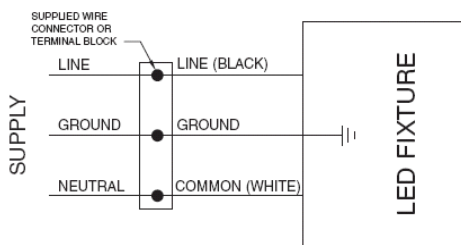
Tighten 3/8" bolt in fitter splice compartment to approximately 19 ft.lbs. (25 N•m).

STEP 3:

Replace the lower fitter compartment cover and tighten screws, making sure not to pinch the O-ring.

ELECTRICAL CONNECTIONS- PHASE to NEUTRAL WIRING - 120/277V

- Push down on terminal marked for ground and insert supply ground conductor.
- Push down on terminal marked for N (Neutral) and insert supply Neutral conductor.
- Push down on terminal marked for L1 (Neutral) and insert supply Hot conductor.



ELECTRICAL CONNECTIONS- PHASE to PHASE WIRING - 208/240/480V

- Push down on terminal marked for ground and insert supply ground conductor.
- Push down on terminal marked for N (Neutral) and insert supply L2 (Hot) conductor.
- Push down on terminal marked for L1 (Line) and insert supply L1 (Hot) conductor.

