

ARE-EDG-2S-AA

Cree Edge™ Area Luminaire – Type II Short – Adjustable Arm Mount

Product Description

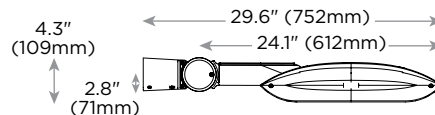
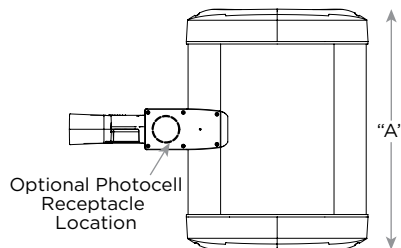
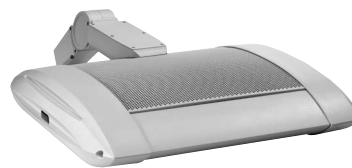
Slim, low profile design minimizes wind load requirements. Luminaire sides are rugged cast aluminum with integral, weathertight LED driver compartments and high performance aluminum heat sinks. Adjustable arm mount is rugged die cast aluminum and mounts to 2" (51mm) IP, 2.375" (60mm) O.D. tenon. Includes leaf / debris guard.

Performance Summary

Utilizes BetaLED® Technology
Patented NanoOptic® Product Technology
Made in the U.S.A. of U.S. and imported parts
CRI: Minimum 70 CRI
CCT: 5700K (+ / - 500K) Standard, 4000K (+ / - 300K)
Limited Warranty*: 10 years on luminaire / 10 years on Colorfast DeltaGuard® finish
EPA and Weight: Reference EPA and Weight spec sheet

Accessories

Field Installed Accessories
XA-BRDSPK Bird Spikes



LED Count (x10)	Dim. "A"
04	12.1" (306mm)
06	14.1" (357mm)
08	16.1" (408mm)
10	18.1" (459mm)
12	20.1" (510mm)
14	22.1" (560mm)
16	24.1" (611mm)
20	28.1" (713mm)
24	32.1" (814mm)

Ordering Information

Example: ARE-EDG-2S-AA-04-E-UL-SV-350-OPTIONS

ARE-EDG	2S	AA		E				
Product	Optic	Mounting	LED Count (x10)	Series	Voltage	Color Options	Drive Current	Options
ARE-EDG	2S Type II Short	AA Adjustable Arm	04 06 08 10 12 14 16 20 24	E	UL Universal 120-277V UH Universal 347-480V 34 347V	SV Silver (Standard) BK Black BZ Bronze PB Platinum Bronze WH White	350* 350mA 525** 525mA 700*** 700mA	40K 4000K Color Temperature - Color temperature per luminaire DIM 0-10V Dimming - Control by others - Refer to dimming spec sheet for details - Can't exceed specified drive current F Fuse - When code dictates fusing, use time delay fuse - Not available with all ML options. Refer to ML spec sheet for availability with ML options HL Hi / Low (175 / 350 / 525 Dual Circuit Input) - Refer to ML spec sheet for details - Sensor not included P Photocell - Not available with all ML options. Refer to ML spec sheet for availability with ML options - Must specify voltage other than UH R NEMA Photocell Receptacle - Not available with all ML options. Refer to ML spec sheet for availability with ML options - Intended for downlight applications at 0° tilt - Photocell by others ML Multi-Level - Refer to ML spec sheet for details

* See www.cree.com/lighting/products/warranty for warranty terms

* Available on luminaires with 60-240 LEDs.

** Available on luminaires with 40-160 LEDs.

*** Available on luminaires with 40-60 LEDs.



Rev. Date: 09/27/13



Product Specifications

CONSTRUCTION & MATERIALS

- Slim, low profile, minimizing wind load requirements
- Luminaire sides are rugged die cast aluminum with integral, weathertight LED driver compartments and high performance heat sinks
- Adjustable mounting arm is rugged die cast aluminum and mounts to 2" (51mm) IP, 2.375" (60mm) O.D. tenon
- Includes leaf / debris guard
- Exclusive Colorfast DeltaGuard® finish features an E-Coat epoxy primer with an ultra-durable powder topcoat, providing excellent resistance to corrosion, ultraviolet degradation and abrasion. Standard is silver. Bronze, black, white, and platinum bronze are also available

ELECTRICAL SYSTEM

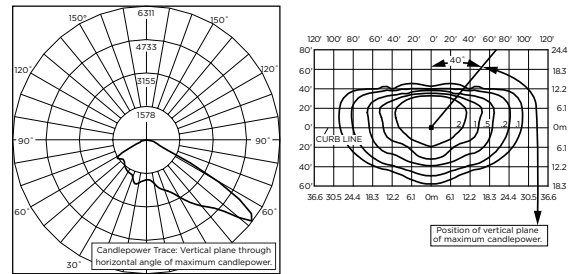
- **Input Voltage:** 120-277V or 347-480V, 50 / 60Hz, Class 1 drivers
- **Power Factor:** > 0.9 at full load
- **Total Harmonic Distortion:** < 20% at full load
- Integral weathertight electrical box with terminal strips (12Ga-20Ga) for easy power hookup
- Integral 10kV surge suppression protection standard
- To address inrush current, slow blow fuse or type C / D breaker should be used

REGULATORY & VOLUNTARY QUALIFICATIONS

- cULus Listed
- Suitable for wet locations
- Enclosure rated IP66 per IEC 60529 when ordered without P or R options
- Consult factory for CE Certified products
- Certified to ANSI C136.31-2001, 3G bridge and overpass vibration standards
- 10kV surge suppression protection tested in accordance with IEEE / ANSI C62.41.2
- Luminaire and finish endurance tested to withstand 5,000 hours of elevated ambient salt fog conditions as defined in ASTM Standard B 117
- Product qualified on the DesignLights Consortium™ ("DLC") Qualified Products List ("QPL") when ordered without full backlight control shield
- Meets Buy American requirements within ARRA

Photometry

All published luminaire photometric testing performed to IESNA LM-79-08 standards by a NVLAP certified laboratory.



CSA Test Report #: 6370
 ARE-EDG-2S-AA-06-E-UL-700-40K
 Initial Delivered Lumens: 11,977

ARE-EDG-2S-AA-12-E-UL-525-40K
 Mounting Height: 25' (7.6m) A.F.G.
 Initial Delivered Lumens: 18,860
 Initial FC at grade

IES Files
 To obtain an IES file specific to your project consult:
<http://www.cree.com/lighting/tools-and-support/exterior-ies-configuration-tool>

Lumen Output, Electrical, and Lumen Maintenance Data

Type II Short Distribution												
LED Count (x10)	5700K		4000K		System Watts 120-480V	TOTAL CURRENT					50K Hours Projected Lumen Maintenance Factor @ 15° C (59° F)***	
	Initial Delivered Lumens*	BUG Ratings** Per TM-15-II	Initial Delivered Lumens*	BUG Ratings** Per TM-15-II		120V	208V	240V	277V	347V		480V
350mA @ 25° C (77° F)												
06	7,012	B2 U0 G2	6,752	B2 U0 G2	66	0.52	0.31	0.28	0.26	0.20	0.15	93%
08	9,349	B2 U0 G2	9,003	B2 U0 G2	90	0.75	0.44	0.38	0.34	0.26	0.20	
10	11,658	B3 U0 G3	11,226	B3 U0 G3	110	0.92	0.53	0.47	0.41	0.32	0.24	
12	13,990	B3 U0 G3	13,472	B3 U0 G3	130	1.10	0.63	0.55	0.48	0.38	0.28	
14	16,218	B3 U0 G3	15,617	B3 U0 G3	158	1.32	0.77	0.68	0.62	0.47	0.35	
16	18,535	B3 U0 G3	17,848	B3 U0 G3	179	1.49	0.87	0.77	0.68	0.53	0.39	
20	23,169	B3 U0 G3	22,311	B3 U0 G3	220	1.84	1.06	0.93	0.83	0.64	0.47	
24	27,802	B4 U0 G4	26,773	B4 U0 G4	261	2.19	1.26	1.10	0.97	0.76	0.56	
525mA @ 25° C (77° F)												
04	6,620	B2 U0 G2	6,375	B2 U0 G2	70	0.58	0.34	0.31	0.28	0.21	0.16	92%
06	9,816	B3 U0 G3	9,453	B2 U0 G2	101	0.84	0.49	0.43	0.38	0.30	0.22	
08	13,088	B3 U0 G3	12,604	B3 U0 G3	133	1.13	0.66	0.58	0.51	0.39	0.28	
10	16,321	B3 U0 G3	15,717	B3 U0 G3	171	1.43	0.83	0.74	0.66	0.50	0.38	
12	19,586	B3 U0 G3	18,860	B3 U0 G3	202	1.69	0.98	0.86	0.77	0.59	0.44	
14	22,705	B3 U0 G3	21,864	B3 U0 G3	232	1.94	1.12	0.98	0.87	0.68	0.50	
16	25,949	B4 U0 G4	24,988	B4 U0 G4	263	2.21	1.27	1.11	0.97	0.77	0.56	
700mA @ 25° C (77° F)												
04	8,086	B2 U0 G2	7,786	B2 U0 G2	92	0.78	0.46	0.40	0.36	0.27	0.20	90%
06	11,990	B3 U0 G3	11,546	B3 U0 G3	134	1.14	0.65	0.57	0.50	0.39	0.29	

* Actual production yield may vary between -4 and +10% of initial delivered lumens.
 ** For more information on the IES BUG (Backlight-Uplight-Glare) Rating visit www.iesna.org/PDF/Erratas/TM-15-II/bugRatingsAddendum.pdf. Valid with no tilt.
 *** For recommended lumen maintenance factor data see TD-13. Calculated L₇₀ based on 6,000 hours LM-80-08 testing; > 150,000 hours.

