

SPECIFICATION SHEET

JOB NAME: _____
 LOCATION: _____
 QUOTE/REF#: _____



LNT45 is a high performance flexible LED fixture designed as a neon replacement. Suitable for indoor and outdoor applications, the **LNT45** easily bends around contours and tight curves without being damaged. It allows for easy installation with its factory sealed terminators and self-locking male and female barrel connectors.

FEATURES

- High color consistency and smooth illumination
- Multiple CCT options available
- Available in IP67 / IP68
- Waterproof/underwater submersible
- Bottom, Side and End Feed options

SPECIFICATIONS

| | |
|-----------------------|-----------------------------------|
| INPUT VOLTAGE | 24V DC Constant Voltage |
| POWER CONSUMPTION | 4.4W per ft. |
| LUMEN OUTPUT | Flat: 140Lm/ft. ; Dome: 105Lm/ft. |
| BEAM ANGLE | Flat: 160° ; Dome: 120° |
| CRI | 88+ |
| DIMMING | MLV, ELV, 0-10 and TRIAC |
| MAXIMUM RUN LENGTH | 32 ft. |
| IP RATING | IP67 / IP68 |
| LUMEN MAINTENANCE | 50,000 Hours |
| POWER FACTOR | ≤ 1 |
| OPERATING TEMPERATURE | -4°F ~ 76°F (-20°C ~ 60°C) |
| STORAGE TEMPERATURE | -4°F ~ 45°F (-40°C ~ 49°C) |
| HUMIDITY | 0-95% Non Condensing |
| CERTIFICATIONS | UL Listed |
| DIMENSIONS | Width x Depth: 0.63" x 0.67" |

| | COLOR TEMP | CRI | LUMENS (FLAT) | LUMENS (DOME) |
|--|------------|-----|---------------|---------------|
| | 2400K | 88+ | 140 | 105 |
| | 2700K | 88+ | 140 | 105 |
| | 3000K | 88+ | 140 | 105 |
| | 3500K | 88+ | 140 | 105 |
| | 4000K | 88+ | 140 | 105 |
| | 5000K | 88+ | 140 | 105 |

4.4W
PER FT.

88+
CRI

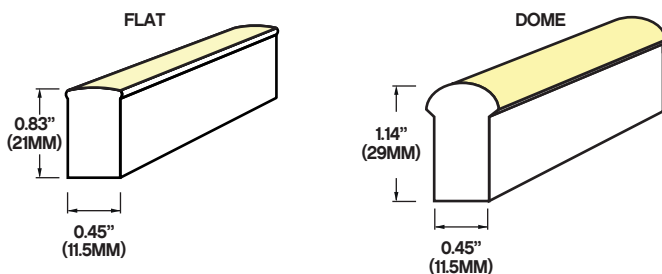
OUTDOOR

WET
IP67
IP68

50,000
HOURS

DIMMABLE

WARRANTY
5 YEAR
WARRANTY



Standard lead wire - 36 inches
 Optional lead wire lengths available: 3ft., 10ft., 16ft., 32ft., 50ft.

ORDERING GUIDE

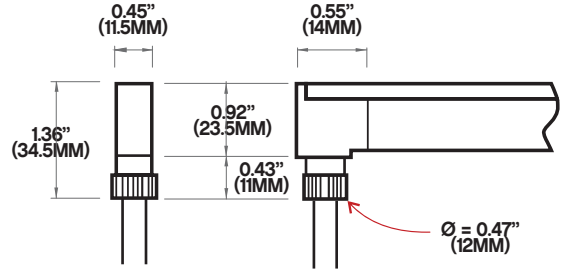
EXAMPLE: LNT45-F-30K-24-280-IP67SFL-36

| LNT45 | MODEL | LENS | COLOR TEMPERATURE | VOLTAGE | LENGTH (CODE) | POWER FEED | POWER FEED LENGTH | |
|-------|-------|----------------------|--|--|---------------|--|--|--|
| | | F - Flat D - Dome | 24K - 2400K 27K - 2700K 30K - 3000K 35K - 3500K 40K - 4000K 50K - 5000K | RED - RED PK - PINK GN - GREEN BL - BLUE AM - AMBER YW - YELLOW | 24 - 24VDC | PLEASE REFER TO PP 5-6 FOR EXACT LENGTHS | IP67BF - BOTTOM IP67SFL - SIDE LEFT IP67SFR - SIDE RIGHT IP67EF - END IP68BF - BOTTOM IP68SFL - SIDE LEFT IP68SFR - SIDE RIGHT IP68EF - END | HW3 - 3FT HW10 - 10FT HW16 - 16FT HW32 - 32FT HW50 - 50FT |

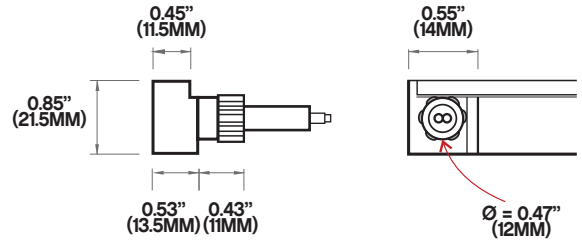
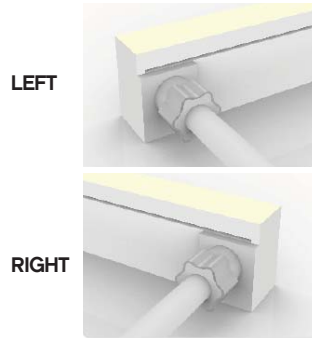
IP67 POWER FEED OPTIONS (FLAT)

- IP67 Rating
- Protected from immersion in water for short periods

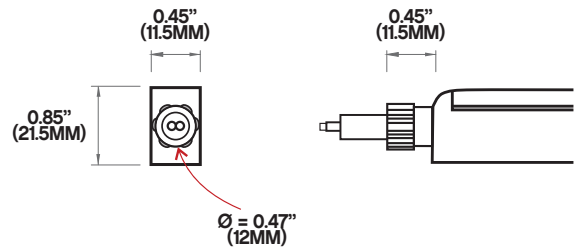
IP67BF - BOTTOM FEED



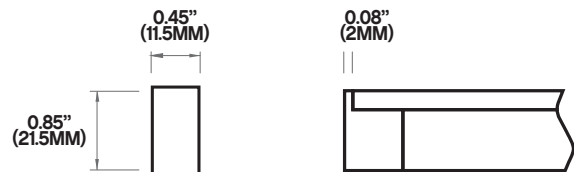
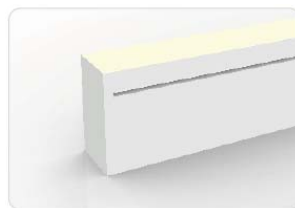
IP67SFL - SIDE FEED LEFT
IP67SFR - SIDE FEED RIGHT



IP67EF - END FEED



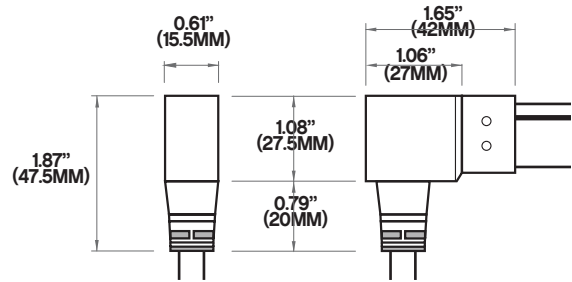
IP67EC - END CAP



IP68 POWER FEED OPTIONS (FLAT)

- IP68 Rating
- Protected from immersion in water to depths of more than 1 meter.

IP68BF - BOTTOM FEED

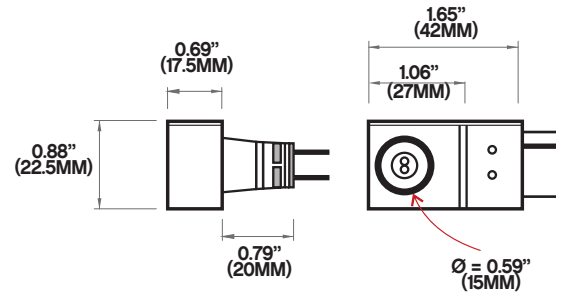


IP68SFL - SIDE FEED LEFT
IP68SFR - SIDE FEED RIGHT

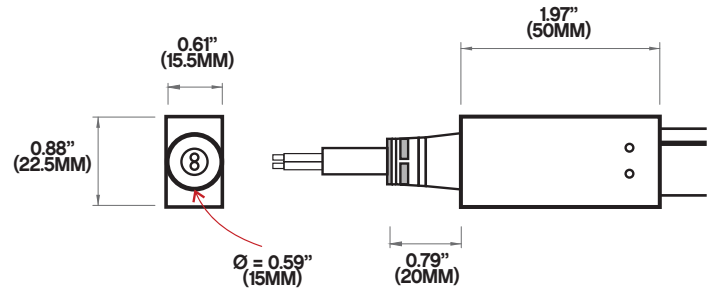
LEFT



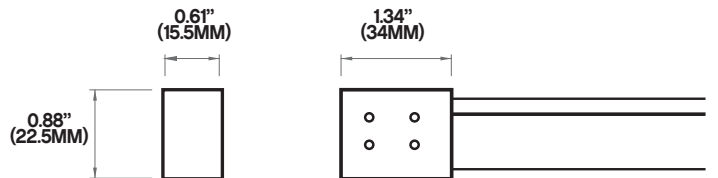
RIGHT



IP68EF - END FEED



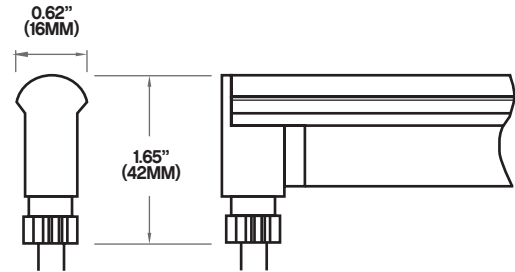
IP68EC - END CAP



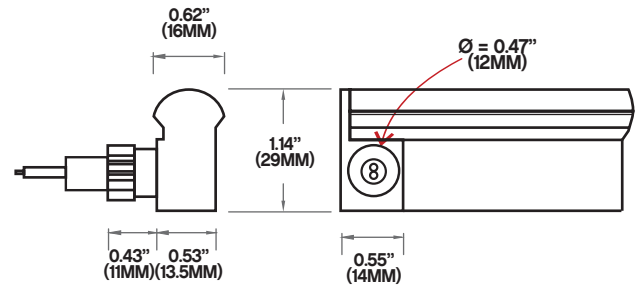
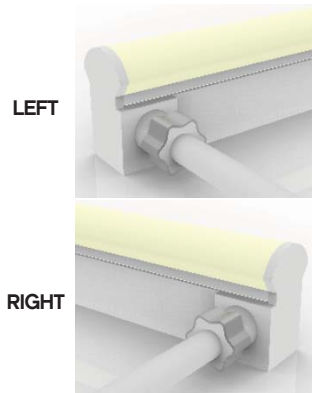
IP67 POWER FEED OPTIONS (DOME)

- IP67 Rating
- Protected from immersion in water for short periods

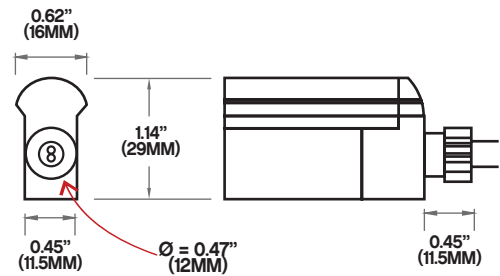
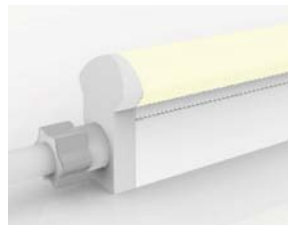
IP67BF - BOTTOM FEED



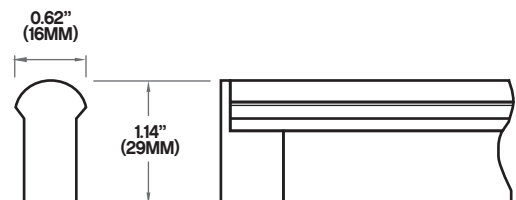
IP67SFL - SIDE FEED LEFT
IP67SFR - SIDE FEED RIGHT



IP67EF - END FEED



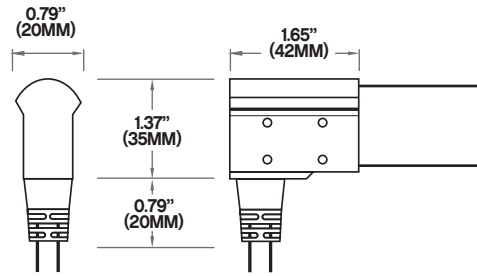
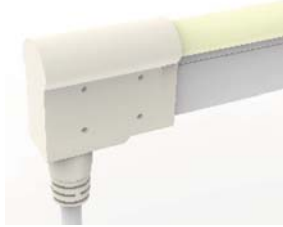
IP67EC - END CAP



IP68 POWER FEED OPTIONS (DOME)

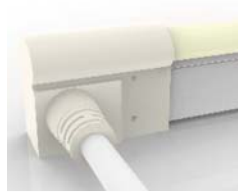
- IP68 Rating
- Protected from immersion in water to depths of more than 1 meter.

IP68BF - BOTTOM FEED

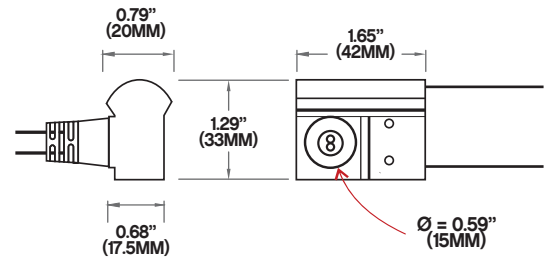


IP68SFL - SIDE FEED LEFT
IP68SFR - SIDE FEED RIGHT

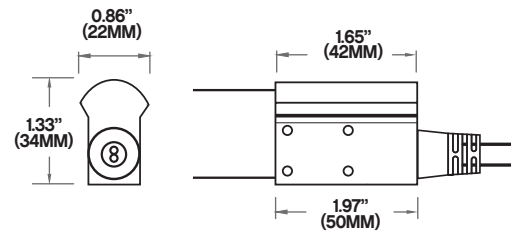
LEFT



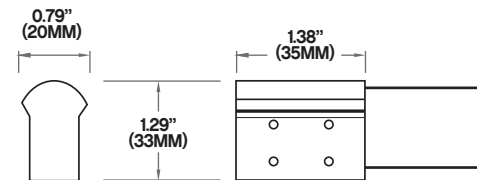
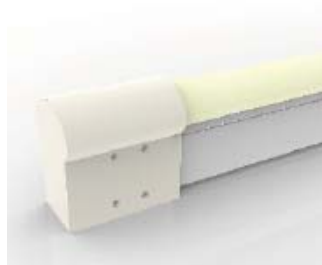
RIGHT



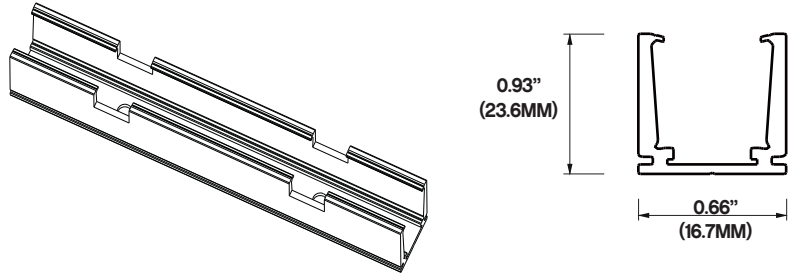
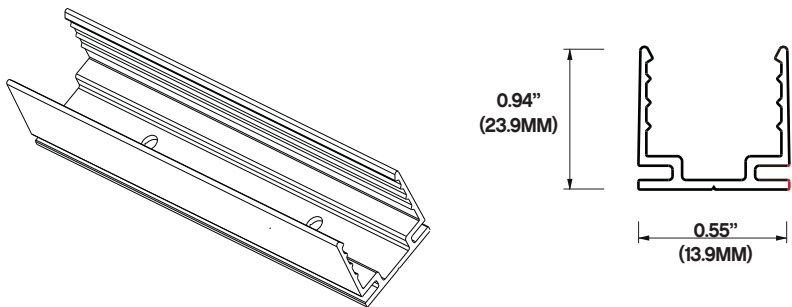
IP68EF - END FEED



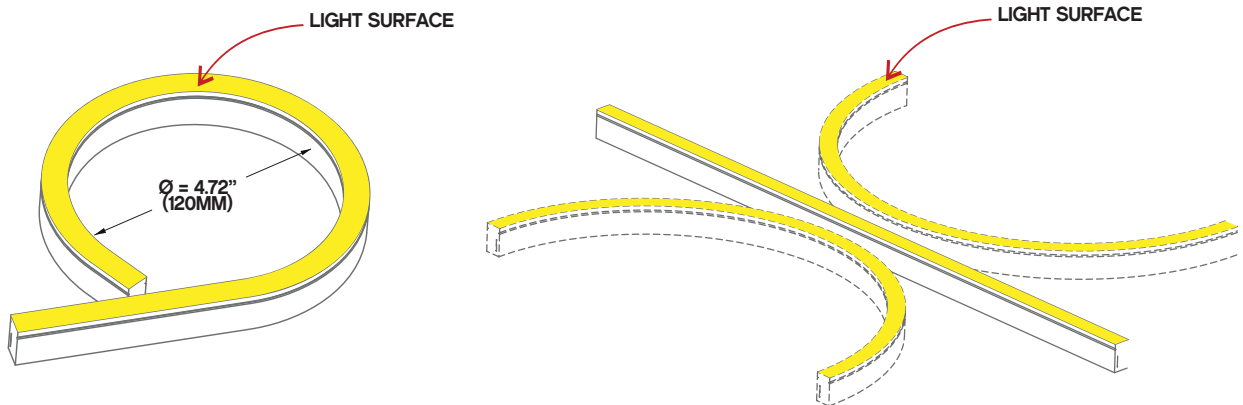
IP68EC - END CAP



ACCESSORIES

| | |
|--|---|
| <p>SELF LOCKING ALUMINUM PROFILE</p> <p>LNT45-AC2 2" PROFILE LNT45-AC39 39" PROFILE</p> |  |
| <p>PLASTIC PROFILE</p> <p>LNT45-PC39 39" PROFILE</p> |  |

BEND RADIUS



NOTE:

Light only bends **SIDEWAYS**, along horizontal axis.
 Bending the LED strip sideways (perpendicular) to the light surface risks damage to the LED strip.
 Do **NOT** bend the LED strip more than the indicated bend radius (shown above). Doing so will damage the LED strip.

LNT-45 4.4W IP67/IP68 NEON SERIES LED STRIP



LNT45 Series is cuttable every **3.94" (10CM)**. Please refer to chart below to determine actual lengths once LED is cut versus actual lengths required or specified.

Total Length Calculation = **order code length + end feed option length**
 example: **60.8"** total length = **order code 60 (59.05" + 1.97" - End Feed Option)**

Optional lead wire lengths available: **3ft., 10ft., 16ft., 32ft., 50ft.**

| POWER FEED OPTION | LENGTH |
|-------------------|--------|
| END FEED | 1.97" |
| BOTTOM FEED | 1.65" |
| SIDE FEED | 1.65" |

CUTTING LENGTH INCREMENT TABLE

| CODE | LENGTH IN CM | LENGTH IN INCHES | CODE | LENGTH IN CM | LENGTH IN INCHES |
|------|--------------|------------------|------|--------------|------------------|
| 4 | 10 | 3.94 | 136 | 340 | 133.86 |
| 8 | 20 | 7.87 | 140 | 350 | 137.79 |
| 12 | 30 | 11.81 | 144 | 360 | 141.73 |
| 16 | 40 | 15.75 | 148 | 370 | 145.67 |
| 20 | 50 | 19.68 | 152 | 380 | 149.61 |
| 24 | 60 | 23.62 | 156 | 390 | 153.54 |
| 28 | 70 | 27.56 | 160 | 400 | 157.48 |
| 32 | 80 | 31.50 | 164 | 410 | 161.42 |
| 36 | 90 | 35.43 | 168 | 420 | 165.35 |
| 40 | 100 | 39.37 | 172 | 430 | 169.29 |
| 44 | 110 | 43.31 | 176 | 440 | 173.23 |
| 48 | 120 | 47.24 | 180 | 450 | 177.16 |
| 52 | 130 | 51.18 | 184 | 460 | 181.10 |
| 56 | 140 | 55.12 | 188 | 470 | 185.04 |
| 60 | 150 | 59.05 | 192 | 480 | 188.98 |
| 64 | 160 | 63.00 | 196 | 490 | 192.91 |
| 68 | 170 | 66.93 | 200 | 500 | 196.85 |
| 72 | 180 | 70.87 | 204 | 510 | 200.79 |
| 76 | 190 | 74.80 | 208 | 520 | 204.72 |
| 80 | 200 | 78.74 | 212 | 530 | 208.66 |
| 84 | 210 | 82.68 | 216 | 540 | 212.60 |
| 88 | 220 | 86.61 | 220 | 550 | 216.53 |
| 92 | 230 | 90.55 | 224 | 560 | 220.47 |
| 96 | 240 | 94.49 | 228 | 570 | 224.41 |
| 100 | 250 | 98.43 | 232 | 580 | 228.35 |
| 104 | 260 | 102.36 | 236 | 590 | 232.28 |
| 108 | 270 | 106.29 | 240 | 600 | 236.22 |
| 112 | 280 | 110.24 | 244 | 610 | 240.16 |
| 116 | 290 | 114.17 | 248 | 620 | 244.10 |
| 120 | 300 | 118.11 | 252 | 630 | 248.03 |
| 124 | 310 | 122.05 | 256 | 640 | 251.97 |
| 128 | 320 | 125.98 | 260 | 650 | 255.91 |
| 132 | 330 | 129.92 | 264 | 660 | 259.84 |

CUTTING LENGTH INCREMENT TABLE

| CODE | LENGTH IN CM | LENGTH IN INCHES |
|------|--------------|------------------|
| 268 | 670 | 263.78 |
| 272 | 680 | 267.72 |
| 276 | 690 | 271.65 |
| 280 | 700 | 275.59 |
| 284 | 710 | 279.53 |
| 288 | 720 | 283.46 |
| 292 | 730 | 287.40 |
| 296 | 740 | 291.34 |
| 300 | 750 | 295.28 |
| 304 | 760 | 299.21 |
| 308 | 770 | 303.15 |
| 312 | 780 | 307.09 |
| 316 | 790 | 311.02 |
| 320 | 800 | 314.96 |
| 324 | 810 | 318.90 |
| 328 | 820 | 322.83 |
| 332 | 830 | 326.77 |
| 336 | 840 | 330.71 |
| 340 | 850 | 334.65 |
| 344 | 860 | 338.58 |
| 348 | 870 | 342.52 |
| 352 | 880 | 346.46 |
| 356 | 890 | 350.39 |
| 360 | 900 | 354.33 |
| 364 | 910 | 358.27 |
| 368 | 920 | 362.20 |
| 372 | 930 | 366.14 |
| 376 | 940 | 370.08 |
| 380 | 950 | 374.02 |
| 384 | 960 | 377.95 |
| 388 | 970 | 381.89 |
| 392 | 980 | 385.83 |
| 396 | 990 | 389.76 |
| 400 | 1000 | 393.70 |

LNT-45 4.4W IP67/IP68 NEON SERIES LED STRIP

COMPATIBLE DIMMABLE TRANSFORMERS

| MAGNETIC LOW VOLTAGE (MLV) | | | |
|----------------------------|-------------------|--------------------|--------------------|
| | CLASS 2 | L X W X H | |
| PSDM SERIES | PSDM-20W-12V | YES | 5.6" X 2" X 2.14" |
| | PSDM-40W-12V | YES | 5.6" X 2" X 2.14" |
| | PSDM-60W-12V | YES | 6.5" X 2.3" X 2.5" |
| | PSDM-100W-12V | NO | 9.8" X 3" X 3" |
| | PSDM-150W-12V | NO | 9.8" X 3" X 3" |
| | PSDM-180W-12V-CL2 | YES | 9.8" X 3" X 3" |
| | PSDM-200W-12V | NO | 9.8" X 3" X 3" |
| | PSDM-300W-12V | NO | 9.8" X 4.2" X 3.5" |
| PSDM-300W-12V-CL2 | YES | 7.0" X 7.0" X 3.2" | |
| PSDM SERIES | PSDM-20W-24V | YES | 5.6" X 2" X 2.14" |
| | PSDM-40W-24V | YES | 5.6" X 2" X 2.14" |
| | PSDM-60W-24V | YES | 6.5" X 2.2" X 2.5" |
| | PSDM-100W-24V-CL2 | YES | 6.5" X 2.2" X 2.5" |
| | PSDM-150W-24V | NO | 9.8" X 3" X 3" |
| | PSDM-192W-24V-CL2 | YES | 7.0" X 7.0" X 3.2" |
| | PSDM-200W-24V | NO | 9.8" X 3" X 3" |
| | PSDM-300W-24V | NO | 9.8" X 4.2" X 3.5" |
| PSDM-288W-24V-CL2 | YES | 7.0" X 7.0" X 3.2" | |

* 277 VERSIONS AVAILABLE, PLEASE CONSULT FACTORY

| HIGH PERFORMANCE MLV | | | |
|----------------------|---------------|-----------|------------------------|
| | CLASS 2 | L X W X H | |
| PSDH SERIES | PSDH-48W-24V | YES | 11.25" X 3.37" X 3.25" |
| | PSDH-96W-24V | YES | 11.25" X 3.37" X 3.25" |
| | PSDH-288W-24V | YES | 14.25" X 8.43" X 4.43" |

* 277 VERSIONS AVAILABLE, PLEASE CONSULT FACTORY

| TRIAC DIMMING ELECTRONIC | | | |
|--------------------------|------------------|-----------|-----------------------|
| | CLASS 2 | L X W X H | |
| PSDT SERIES | PSDT-20W-12V | YES | 6.1" X 2.12" X 0.79" |
| | PSDT-20W-24V | YES | 6.1" X 2.12" X 0.79" |
| | PSDT-40W-12V | YES | 7.0" X 2.4" X 0.95" |
| | PSDT-40W-24V | YES | 7.0" X 2.4" X 0.95" |
| | PSDT-60W-12V | YES | 7.1" X 2.36" X 1.38" |
| | PSDT-60W-24V | YES | 7.1" X 2.36" X 1.38" |
| | PSDT-96W-24V-JB | YES | 9.06" X 2.76" X 1.82" |
| | PSDT-120W-12V-JB | NO | 8.92" X 3.0" X 1.85" |
| | PSDT-150W-24V-JB | NO | 8.92" X 3.0" X 1.85" |
| | PSDT-200W-24V-JB | NO | 8.92" X 3.0" X 1.85" |

* 277 VERSIONS AVAILABLE, PLEASE CONSULT FACTORY

LNT-45 4.4W IP68 NEON SERIES LED STRIP

COMPATIBLE DIMMABLE TRANSFORMERS

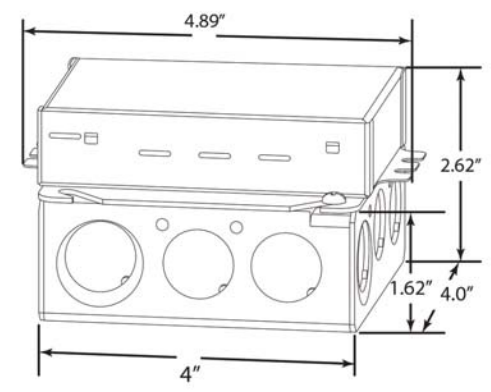
0-10 DIMMING WITH JUNCTION BOX

| | CLASS 2 | L X W X H |
|-------------|----------------------|----------------------------|
| PSDE SERIES | PSDE-100W-24V-010-JB | YES 12.32" X 1.77" X 1.67" |



LUTRON 1% DIMMING

| | CLASS 2 | L X W X H |
|--------|------------------|------------------------|
| 2-WIRE | LTEA4U1UKL-CV240 | YES 4.0" X 1.5" X 4.0" |
| 3-WIRE | L3DA4U1UKL-CV240 | YES 4.0" X 1.5" X 4.0" |



LUTRON .1% DIMMING

| | CLASS 2 | L X W X H |
|-------------|------------------|-------------------------|
| PSDE SERIES | PSDE-96W-24V-ECO | YES 10.5" X 3.0" X 2.0" |

