

DESCRIPTION

ArcLine is a premium grade specification lensed troffer series. This innovative, high quality luminaire is dedicated to the latest solid state lighting and driver technology for optimal performance and energy efficiency. The ArcLine is compatible with all of today's popular ceiling systems and is available with a number of options and accessories for application versatility.

The ArcLine series features efficiency, quality and performance. The series is an excellent choice for commercial office spaces, schools, hospitals or retail merchandising areas.

Catalog #		Type
Project		
Comments		Date
Prepared by		

SPECIFICATION FEATURES

Construction

Rigid housing is die formed of code gauge prime cold rolled steel and features full length die-formed stiffeners and unibody endplate for added strength. Side flanges are hemmed. Innovative design provides superior lens brightness uniformity and visual comfort. Unibody endplates are securely attached with interlocking tabs and screws. Four auxiliary fixture end suspension points provided. Ample KOs are provided for continuous row wiring. Endplates have integral Grid-lock feature for safety and convenience.

Controls

The ArcLine LED is equipped standard with a 0-10V continuous dimming driver that works with any standard 0-10V control/dimmer. Combine with energy-saving products like occupancy sensors, daylighting controls, and lighting relay panels from Cooper Controls (www.coopercontrol.com) to maximize energy savings.

Electrical

Long-Life LED system coupled with electrical driver to deliver optimal performance. LED's available in 3000k, 3500k or 4000k with a CRI ≥ 85. Projected life is 50,000 hours at 70% lumen output. cULus listed. Electronic drivers are available for 120-277V applications.

Finish

Multistage, iron phosphate pretreatment ensures maximum bonding and rust inhibition. Housing and ballast cover finished with new 90% reflective white enamel for superior performance.

Hinging/Latching

Positive cam action steel latches with baked white enamel finish. Safety-lock T-hinges allow hinging and latching either side. Door assembly hinges down for easy access from below without tools.

Frame/Shielding

Die formed, heavy gauge, flat steel door with reinforced mitered corners and baked white enamel finish. Positive light seals. Acrylic frosted lens.

Compliance

Modules are UL recognized components and indoor luminaires are cULus listed for 25°C ambient environments, RoHS compliant, and LED modules comply with IESNA LM-79 and LM-80 standards. DesignLights™ Consortium Qualified (high lumen version only). Refer to www.designlights.org Qualified Products List under Family Models for details.



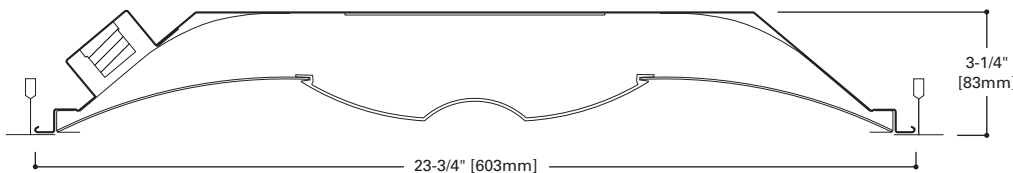
**2ALN
LED**

**2' X 2' TROFFER
LED LAMPS**

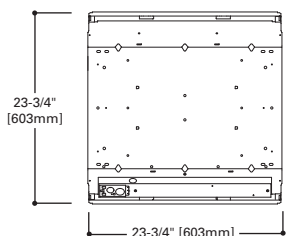
Specification Troffer
For Use in Insulated
Ceilings

ArcLine

DESIGNLIGHTS
CONSORTIUM



MOUNTING DATA



DOOR FRAMES

ALN
Flat, White Steel

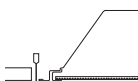


ENERGY DATA

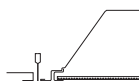
Input Watts:
27=28W
36=37W

CEILING COMPATIBILITY

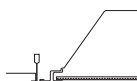
G
Grid/Lay-in
Standard



G
Concealed T



G
Slot Grid

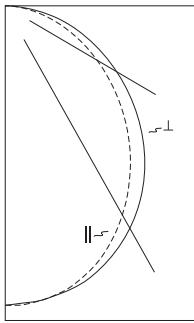


Ceiling Type **Trim Type**

Exposed Grid G
Concealed T G
Slot Grid G

(Verify compatibility/ consult factory.)

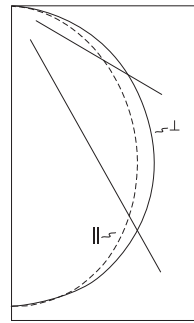
PHOTOMETRICS



2ALNG-LD1-27-UNV-L835-CD1-U
 Dimming Driver
 Linear LED 3500K
 Spacing criterion:
 (II) 1.2 x mounting
 height, (L) 1.3 x
 mounting height
 Efficiency: 100%
 Lumens: 2720
 Input Watts: 27.9W
 Efficacy: 98 LPW
 Test Report:
 2ALNG-LD1-27-UNV-
 L835-CD1-U.IES

Candlepower

Angle	Along II	45°	Across L
0	1016	1016	1016
5	1012	1011	1010
10	995	997	997
15	965	972	979
20	923	935	947
25	867	887	906
30	803	831	857
35	733	768	800
40	660	700	735
45	583	626	664
50	505	549	588
55	427	471	509
60	352	395	430
65	281	319	353
70	213	247	278
75	149	180	206
80	91	118	128
85	40	51	52
90	0	0	0



2ALNG-LD1-36-UNV-L835-CD1-U
 Dimming Driver
 Linear LED 3500K
 Spacing criterion:
 (II) 1.2 x mounting
 height, (L) 1.3 x
 mounting height
 Efficiency: 100%
 Lumens: 3626
 Input Watts: 36.8W
 Efficacy: 99 LPW
 Test Report:
 2ALNG-LD1-36-UNV-
 L835-CD1-U.IES

Candlepower

Angle	Along II	45°	Across L
0	1329	1329	1329
5	1325	1323	1321
10	1304	1306	1305
15	1267	1274	1283
20	1214	1227	1243
25	1143	1165	1191
30	1062	1094	1129
35	971	1014	1057
40	876	926	975
45	775	832	885
50	673	732	786
55	570	630	684
60	472	529	585
65	376	430	483
70	286	337	384
75	202	247	288
80	126	164	175
85	59	74	74
90	0	0	0

Coefficients of Utilization

rc	Effective floor cavity reflectance 20%																	
	80%			70%			50%			30%			10%			0%		
rw	70	50	30	10	70	50	30	10	50	30	10	50	30	10	50	30	10	0
RCR																		
0	119	119	119	119	116	116	116	116	111	111	111	106	106	106	102	102	102	100
1	109	104	100	96	106	102	98	94	97	94	91	94	91	88	90	88	86	84
2	99	91	84	78	96	89	83	77	85	80	75	82	78	74	79	75	72	70
3	90	80	72	65	88	78	71	65	75	69	63	73	67	62	70	65	61	59
4	83	71	62	55	80	70	61	55	67	60	54	65	59	54	63	57	53	51
5	76	63	54	48	74	62	54	48	60	53	47	58	52	47	56	51	46	44
6	70	57	48	42	69	56	48	42	54	47	41	53	46	41	51	45	41	39
7	65	52	43	37	64	51	43	37	50	42	37	48	41	36	47	41	36	34
8	61	47	39	33	59	47	39	33	45	38	33	44	37	33	43	37	32	31
9	57	44	35	30	56	43	35	30	42	35	30	41	34	29	40	34	29	27
10	53	40	32	27	52	40	32	27	39	32	27	38	31	27	37	31	27	25

Coefficients of Utilization

rc	Effective floor cavity reflectance 20%																	
	80%			70%			50%			30%			10%			0%		
rw	70	50	30	10	70	50	30	10	50	30	10	50	30	10	50	30	10	0
RCR																		
0	119	119	119	119	116	116	116	116	111	111	111	106	106	106	102	102	102	100
1	109	104	99	96	106	102	98	94	97	94	91	93	91	88	90	88	86	84
2	99	91	84	78	96	89	82	77	85	80	75	82	77	73	79	75	72	70
3	90	80	71	65	88	78	70	64	75	68	63	72	67	62	70	65	61	59
4	83	71	62	55	80	69	61	55	67	60	54	64	58	53	62	57	52	50
5	76	63	54	47	74	62	54	47	60	52	47	58	51	46	56	50	46	44
6	70	57	48	42	68	56	47	41	54	47	41	52	46	41	51	45	40	38
7	65	52	43	37	63	51	42	37	49	42	36	48	41	36	46	40	36	34
8	61	47	39	33	59	46	38	33	45	38	32	44	37	32	43	37	32	30
9	57	43	35	30	55	43	35	29	42	34	29	40	34	29	39	33	29	27
10	53	40	32	27	52	39	32	27	38	31	27	38	31	27	37	31	26	25

Zonal Lumen Summary

Zone	Lumens	%Fixture
0-30	778	28.6
0-40	1258	46.2
0-60	2160	79.4
0-90	2720	100.0
0-180	2720	100.0

Luminaire Data

Angle in Deg	Average 0-Deg cd/sm	Average 45-Deg cd/sm	Average 90-Deg cd/sm
45	2764	2967	3148
55	2495	2753	2975
65	2229	2530	2800
75	1930	2331	2668
85	1538	1961	2000

Zonal Lumen Summary

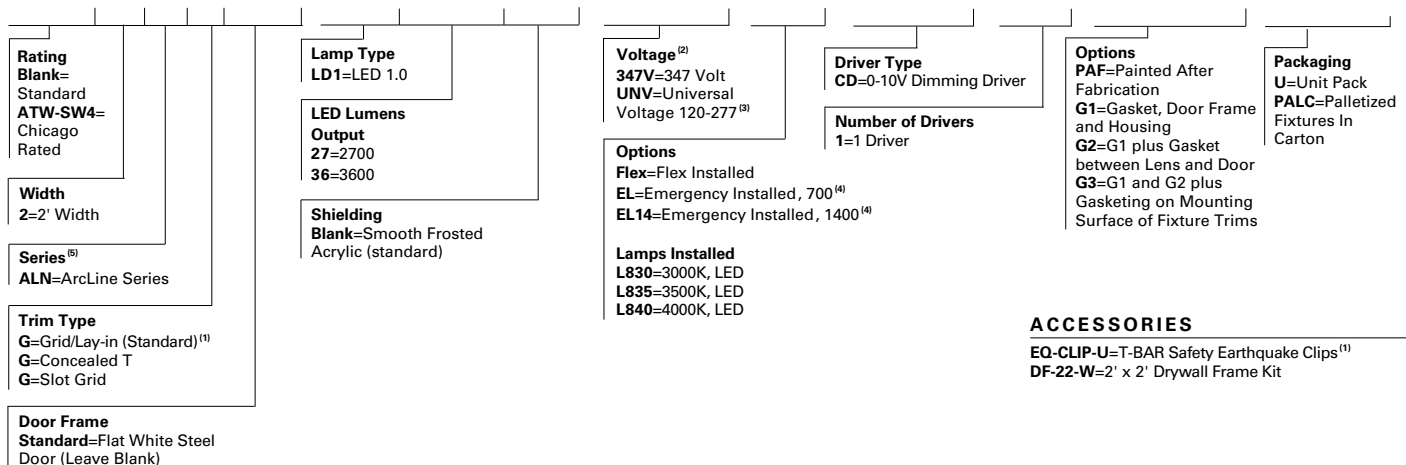
Zone	Lumens	%Fixture
0-30	1022	28.2
0-40	1656	45.7
0-60	2860	78.9
0-90	3626	100.0
0-180	3626	100.0

Luminaire Data

Angle in Deg	Average 0-Deg cd/sm	Average 45-Deg cd/sm	Average 90-Deg cd/sm
45	3761	4037	4295
55	3410	3769	4092
65	3053	3491	3922
75	2678	3275	3818
85	2323	2913	3293

ORDERING INFORMATION

SAMPLE NUMBER: 2ALNG-LD1-36-UNV-L835-CD1-U



ACCESSORIES

- EQ-CLIP-U=T-BAR Safety Earthquake Clips⁽¹⁾
- DF-22-W=2' x 2' Drywall Frame Kit

NOTES: ⁽¹⁾An EQ Grid Clip is recommended for all 9/16" ceiling systems. Four required per fixture. ⁽²⁾Products also available in non-US voltages and frequencies for international markets. ⁽³⁾Not available when specifying emergencies, voltage must be specific. ⁽⁴⁾EL options are non-integral. ⁽⁵⁾DesignLights™ Consortium Qualified (high lumen only). Refer to www.designlights.org Qualified Products List under Family Models for details.

For complete product data, reference the Fluorescent Specification binder. Specifications & dimensions subject to change without notice. Consult your Cooper Lighting Representative for availability and ordering information.

SHIPPING INFORMATION

Catalog No.	Wt.
2ALNG-LD1-27	10 lbs.
2ALNG-LD1-36	10 lbs.