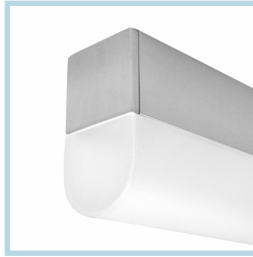
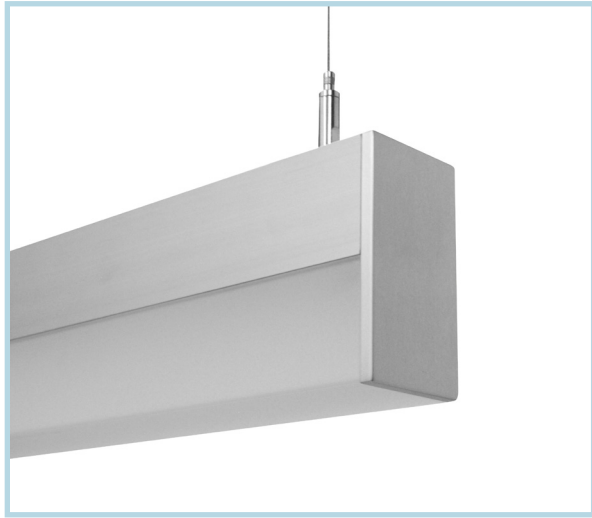


# HCB07 | Swell™ GENERAL INFORMATION



Rectilinear LED luminaire with drop down lens, Illuminated by BIOS®

Project: \_\_\_\_\_ Type: \_\_\_\_\_



## FEATURES

The HCB07 is a linear LED luminaire tailored for health-centric lighting installations. The 2-1/8" wide extruded aluminum housing is fitted with a 2" tall, rectangular or rounded profile frosted acrylic lens and capped with machined aluminum end caps.

The HCB07 fixture is embedded with BIOS SkyBlue® circadian solutions to produce the healthy "blue sky" light signal needed to stimulate human circadian biology. This specific light wavelength communicates directly with human biology through a non-visual photoreceptor to regulate circadian rhythms, providing healthier sleep patterns and ultimately, better health.

## SPECIFICATIONS

Fixture constructed of an extruded aluminum housing, extruded, frosted acrylic lens and machined aluminum end caps

Model variations offered in rectangular or rounded profiles for surface and wall mount or cable suspended applications with solid or luminous end options

Standard finishes as shown below

Available in nominal lengths of 2', 4', 6' and 8' single fixtures and continuous runs

Basic continuous run fixtures provided with 18 ga. wiring harness for 6 Amp maximum load (consult factory for runs requiring multiple circuits, sensor integration, etc.)

Standard integral 120-277V driver offered with 0-10V dimming or non-dim

Integral 120-277V emergency battery backup available for 4' or 8' nominal non-dim or 0-10V (consult factory for all other lengths/drivers)

Standard light outputs are 765 and 1015 lumens per foot

BIOS Static Spectrum or Dynamic LEDs available in 3000K, 3500K and 4000K, with a CRI of 80+ to 90 depending on color

Life: 50,000 hours L<sub>70</sub>

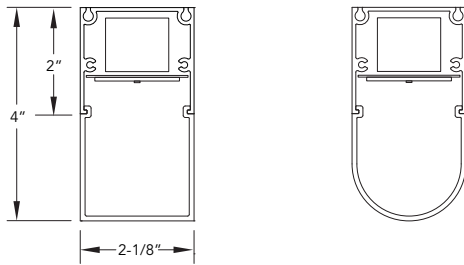
Passive infrared occupancy sensor available (FOR RECTANGULAR PROFILE ONLY)

Limited five year warranty

UL and C-UL listed for dry and damp locations



## SECTION



## PERFORMANCE

NOMINAL LENGTH	OUTPUT	LUMENS/ft.	WATTS/ft.	LUMINAIRE LUMENS	EFFICACY (LPW)
4'	R: regular	765	9.6	2859	80
	H: high	1015	13.4	3777	75

Note: All data reflects fixture with BIOS Static Spectrum 3500K LEDs and rectangular profile and solid ends

GET A QUOTE >

## HCB07 -

<b>NOMINAL FIXTURE LENGTH*</b> 2: 22-3/4" 4: 44-3/4" 6: 66-3/4" 8: 88-3/4"	<b>CORRELATED COLOR TEMPERATURE</b> [BIOS static] BS30: 3000K-85 CRI BS35: 3500K-85 CRI BS40: 4000K-90 CRI [BIOS dynamic] BD30: 3000K-83 CRI BD35: 3500K-83 CRI BD40: 4000K-83 CRI	<b>DRIVER</b> ND: non-dimming [Dimming] D: 0-10V, 1%	<b>LENS</b> A: rectangular profile – solid end B: rectangular profile – luminous end C: rounded profile – solid end D: rounded profile – luminous end	<b>MOUNT</b> SM: surface mount WD: wall mount - direct C4: cable mount 4' cable length C8: cable mount 8' cable length CF: consult factory for custom mounting	<b>FINISH</b> AW: architectural white (semi-matte) WH: white (semi-gloss) BL: black (semi-matte) MB: matte black ESS: environmental satin silver BZ: bronze PR: primer CF: consult factory for custom finish SA: satin anodize (requires additional lead time)
			<b>LIGHT OUTPUT</b> (lumens per foot) R: regular - 765 H: high - 1015 CF: consult factory for custom output	<b>OPTIONS</b> ED: emergency driver (4' or 8' non-dim or 0-10V only) S1: occ sensor pos.1 (see options section) S2: occ sensor pos.2 (see options section) S3: occ sensor pos.3 (see options section)	<b>RUN CONFIGURATION</b> SN: single ST: starter AD: adder TR: terminator

\* Actual dimension dependent on run configuration

©2019 Bartco Lighting, Inc. These products are protected by patents and patents pending. Unauthorized use or reproduction of illustrations, photographs or text is prohibited. Bartco Lighting reserves the right to discontinue products or to change the technical and/or design specifications at any time. SkyBlue, BIOS, Illuminated By BIOS are registered trademarks of Biological Innovations and Optimization Systems, LLC.

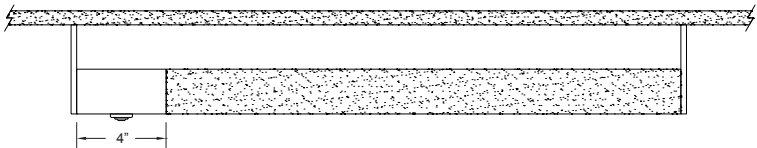
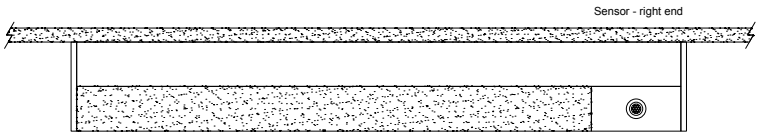
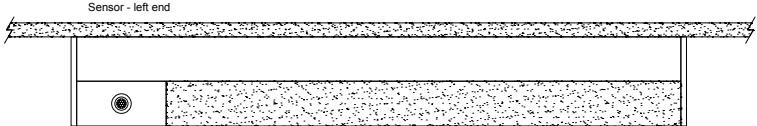
LENS

ORDERING CODE	DESCRIPTION	SPECIFICATIONS
	A RECTANGULAR SOLID END	Rectangular profile with full height aluminum end cap
	B RECTANGULAR LUMINOUS END	Rectangular profile with aluminum end cap and frosted acrylic lens end
	C ROUNDED SOLID END	Rounded profile with full height aluminum end cap
	D ROUNDED LUMINOUS END	Rounded profile with aluminum end cap and frosted acrylic lens end

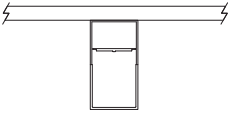
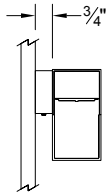
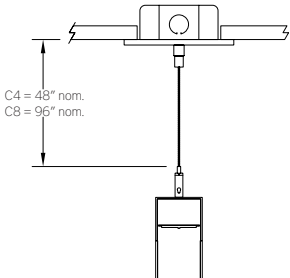
OPTIONS

ORDERING CODE	DESCRIPTION	SPECIFICATIONS
ED	EMERGENCY LED DRIVER	<ul style="list-style-type: none"> <li>• Universal 120-277V input voltage emergency driver delivers initial minimum power of 10W for 90 minutes</li> <li>• Available for 4' or 8' nominal length non-dim or 0-10V fixture only (consult factory for all other lengths/drivers)</li> </ul>

## OPTIONS

ORDERING CODE	DESCRIPTION	SPECIFICATIONS
	OCCUPANCY SENSOR	Passive infrared occupancy sensor with hold-off daylighting adjustment (10-120 foot candles) and time delay adjustment from 30 seconds to 30 minutes AVAILABLE FOR RECTANGULAR PROFILE ONLY
S1	Occupancy sensor – position 1	Sensor located on the top at an end 
S2	Occupancy sensor – position 2	Sensor located on the side at the <b>right</b> end 
S3	Occupancy sensor – position 3	Sensor located on the side at the <b>left</b> end 

## MOUNTING

	ORDERING CODE	DESCRIPTION
	SM	SURFACE MOUNT Use appropriate fastener through $\text{Ø}3/16''$ holes in housing
	WD	WALL MOUNT – DIRECT ORIENTATION Mounting option includes: • 1-7/8" H x 2-1/2" W aluminum bracket projects the fixture housing 3/4:" from the wall surface
	C4 and C8	CABLE MOUNT Mounting option includes: • $\text{Ø} 1/16'' \times 48''$ (C4) or 96" (C8) aircraft cables • 60" (C4) or 108" (C8) power cable (in coordinating finish) • Bracket bars • $\text{Ø} 5''$ white canopies • Ceiling couplers • Side exit cable grippers