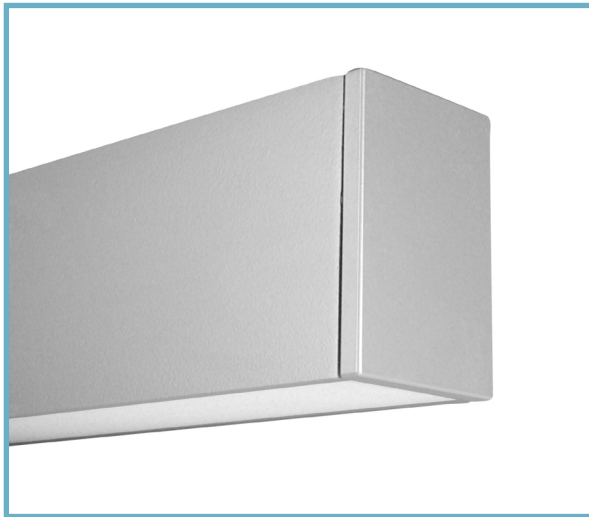


HCB01 | Swell™ GENERAL INFORMATION

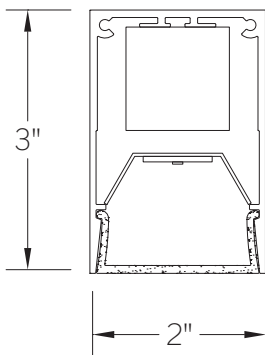


Rectilinear LED luminaire with flush lens Illuminated by BIOS®

Project: _____ Type: _____



SECTION



PERFORMANCE

NOMINAL LENGTH	OUTPUT	LUMENS/ft.	WATTS/ft.	LUMINAIRE LUMENS	EFFICACY (LPW)
4'	R: regular	590	9.7	2201	61
	H: high	780	13.6	2908	58

Note: All data reflects fixture with BIOS Static Spectrum 3500K LEDs

GET A QUOTE >



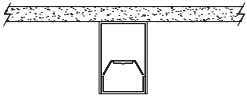
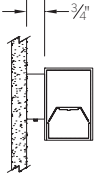
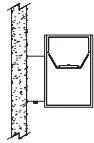
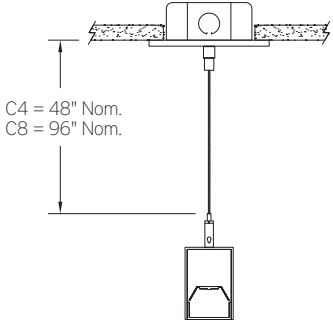
HCB01 -

NOMINAL FIXTURE LENGTH* 2: 22-5/8" 4: 44-5/8" 6: 66-5/8" 8: 88-5/8"	CORRELATED COLOR TEMPERATURE [BIOS static] BS30: 3000K-85 CRI BS35: 3500K-85 CRI BS40: 4000K-90 CRI [BIOS dynamic] BD30: 3000K-83 CRI BD35: 3500K-83 CRI BD40: 4000K-83 CRI	DRIVER ND: non-dimming [Dimming] D: 0-10V, 1%	LIGHT OUTPUT (lumens per foot) R: regular – 590 H: high – 780 CF: consult factory for custom output	MOUNT SM: surface mount WD: wall mount - direct WI: wall mount - indirect C4: cable mount 4' cable length C8: cable mount 8' cable length	RUN CONFIGURATION SN: single ST: starter AD: adder TR: terminator	FINISH AW: architectural white (semi-matte) WH: white (semi-gloss) BL: black (semi-matte) MB: matte black ESS: environmental satin silver BZ: bronze PR: primer CF: consult factory for custom finish SA: satin anodize (may require additional lead time)
--	--	--	--	---	--	--


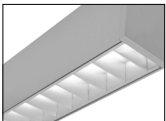
OPTIONS
 ED: emergency driver (4' or 8' non-dim or 0-10V only)
 S1: occ sensor pos.1 (see options section)
 L: louver (4' and 8' ONLY)

* Actual dimension dependent on run configuration

MOUNTING

	ORDERING CODE	DESCRIPTION
	SM	SURFACE MOUNT Use appropriate fastener through Ø3/16" holes in housing
	WD	WALL MOUNT – DIRECT ORIENTATION Mounting option includes: • 1-7/8" H x 2-1/2" W aluminum bracket projects the fixture housing 3/4:" from the wall surface
	WI	WALL MOUNT – INDIRECT ORIENTATION Mounting option includes: • 1-7/8" H x 2-1/2" W aluminum bracket projects the fixture housing 3/4:" from the wall surface
	C4 and C8	CABLE MOUNT Mounting option includes: • Ø 1/16" x 48" (C4) or 96" (C8) aircraft cables • 60" (C4) or 108" (C8) power cable (in coordinating finish) • Bracket bars • Ø 5" white canopies • Ceiling couplers • Side exit cable grippers

OPTIONS

	ORDERING CODE	DESCRIPTION	SPECIFICATIONS
	ED	EMERGENCY LED DRIVER	<ul style="list-style-type: none"> • Universal 120-277V input voltage emergency driver delivers initial minimum power of 10W for 90 minutes • Available for 4' or 8' nominal length non-dim or 0-10V fixture only (consult factory for all other lengths/drivers) <p>Note: remote battery backup available for shorter fixture lengths - ordered separately, consult factory for details</p> <ul style="list-style-type: none"> • Indicator/test switch located on the top for C4/C8 mount and on the side at an end for SM mount
		OCCUPANCY SENSOR	Passive infrared occupancy sensor with hold-off daylighting adjustment (10-120 foot candles) and time delay adjustment from 30 seconds to 30 minutes Light aperture length reduced by 4"
	S1	OCCUPANCY SENSOR - POSITION 1	Sensor located on underside at an end
	L	LOUVER	Parabolic louver with 5/8" blades at 1" spacing, formed from diffuse, high reflectance aluminum and supplied with light diffusion film