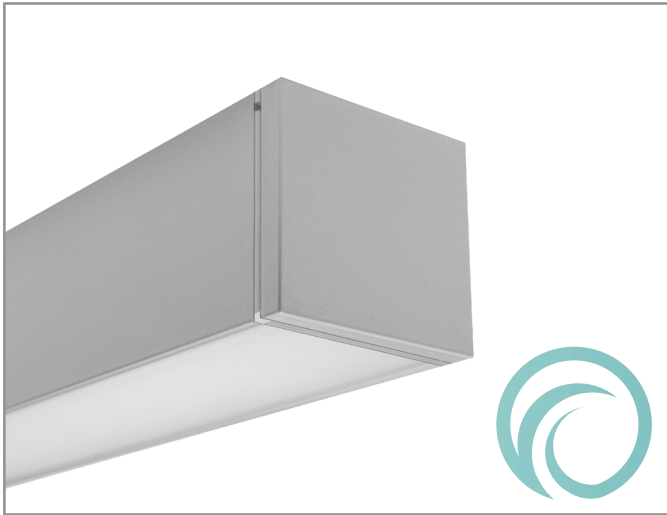
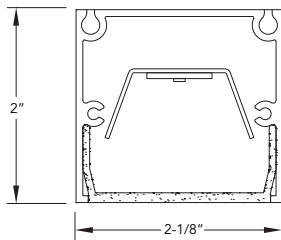


Project: \_\_\_\_\_ Type: \_\_\_\_\_



## SECTION



## FEATURES

The BSW225 is a linear LED luminaire for outdoor applications. The surface or wall mount 2-1/8" wide by 2" tall extrusion is fitted with a flush, frosted lens and machined aluminum end caps. Each fixture is paired with a remote mounted, wet location 0-10V dimming or non-dimming driver and housing.

## SPECIFICATIONS

Fixture constructed of an extruded aluminum housing, extruded, frosted acrylic lens and machined aluminum end caps

Standard finishes as shown below

Available for surface or wall mounting in nominal lengths of 2'-8' single fixtures and continuous runs

Fixtures wired with 10' low voltage leads and provided with a Ø7/8 hole for back feeding

Included remote 120-277V wet location driver offered with 0-10V dimming or non-dim and surface mount aluminum enclosure

Standard outputs are 340, 680 and 895 lumens per foot

LEDs available in 2700K, 3000K, 3500K and 4000K, within a 3 step MacAdam ellipse, all with 80+ CRI typical

Life: 50,000 hours L<sub>70</sub>

Limited five year warranty

UL and C-UL listed for wet locations

[GET A QUOTE >](#)

## PERFORMANCE

NOMINAL LENGTH	OUTPUT	LUMENS/ft.	WATTS/ft.	LUMINAIRE LUMENS	EFFICACY (LPW)
4'	L: low	340	4.0	1362	85
	R: regular	680	8.0	2723	85
	H: high	895	10.5	3574	85

Note: All data reflects fixtures with 3500K LEDs



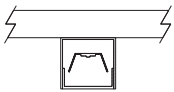
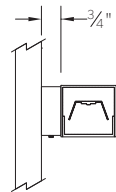
## BSW225 -

NOMINAL FIXTURE LENGTH*	CORRELATED COLOR TEMPERATURE	DRIVER [remote] RN: non-dimming RD: 0-10V dimming, 5%	LIGHT OUTPUT (lumens per foot) L: low - 340 R: regular - 680 H: high - 895	MOUNT SM: surface mount WD: wall mount - direct	RUN CONFIGURATION SN: single ST: starter AD: adder TR: terminator	FINISH AW: architectural white (semi-matte) WH: white (semi-gloss) BL: black (semi-matte) MB: matte black ESS: environmental satin silver BZ: bronze PR: primer CF: consult factory for custom finish
2: 24-5/8"	27: 2700K - 80+ CRI					
3: 36-5/8"	30: 3000K - 80+ CRI					
4: 48-5/8"	35: 3500K - 80+ CRI					
5: 60-5/8"	40: 4000K - 80+ CRI					
6: 72-5/8"						
7: 84-5/8"						
8: 96-5/8"						

Note: Each fixture includes a remote driver matched for fixture length and light output.

\* Actual dimension dependent on run configuration

## MOUNTING

	ORDERING CODE	DESCRIPTION
	SM	SURFACE MOUNT <ul style="list-style-type: none"> <li>• Use appropriate fastener through Ø3/16" holes in housing</li> <li>• 10' low voltage leads exit out the rear at an end</li> </ul>
	WD	WALL MOUNT – DIRECT ORIENTATION <p>Mounting option includes:</p> <ul style="list-style-type: none"> <li>• 1-7/8" H x 4-1/2" W aluminum bracket projects the fixture housing 3/4" from the wall surface</li> <li>• 10' low voltage leads exit out the side through a mounting bracket</li> </ul>

## EPA CALCULATIONS

LENGTH ORDERING CODE	EPA
2	0.66 ft <sup>2</sup>
3	0.98 ft <sup>2</sup>
4	1.30 ft <sup>2</sup>
5	1.61 ft <sup>2</sup>
6	1.93 ft <sup>2</sup>
7	2.24 ft <sup>2</sup>
8	2.56 ft <sup>2</sup>