

For Use With 120V.  
No Transformer Required.

**CATALOG NUMBER LOGIC**

EXAMPLE: AL - 78 - WHP - 9 - 11 - A

Series: \_\_\_\_\_

Lamp Type: \_\_\_\_\_

- 0 - By Others
- 75 - 90PAR38/CAP/NSP9, 9° N. Spot
- 76 - 90PAR38/CAP/SP12, 12° Spot
- 77 - 90PAR38/CAP/FL30, 30° Flood
- 78 - 120PAR38/CAP/NSP10, 10° N. Spot
- 79 - 120PAR38/CAP/FL30, 30° Flood
- 80 - 120PAR38/CAP/WFL50, 50° W. Flood

Finish: \_\_\_\_\_

Powdercoat	Satin	Wrinkle
Bronze	BZP	BZW
Black	BLP	BLW
White (Gloss)	WHP	WHW
Aluminum	SAP	---
Verde	---	VER

Lens Type: \_\_\_\_\_

- 9 - Clear (Standard)
- 10 - Spread
- 13 - Rectilinear

Shielding: \_\_\_\_\_

- 11 - Honeycomb Baffle

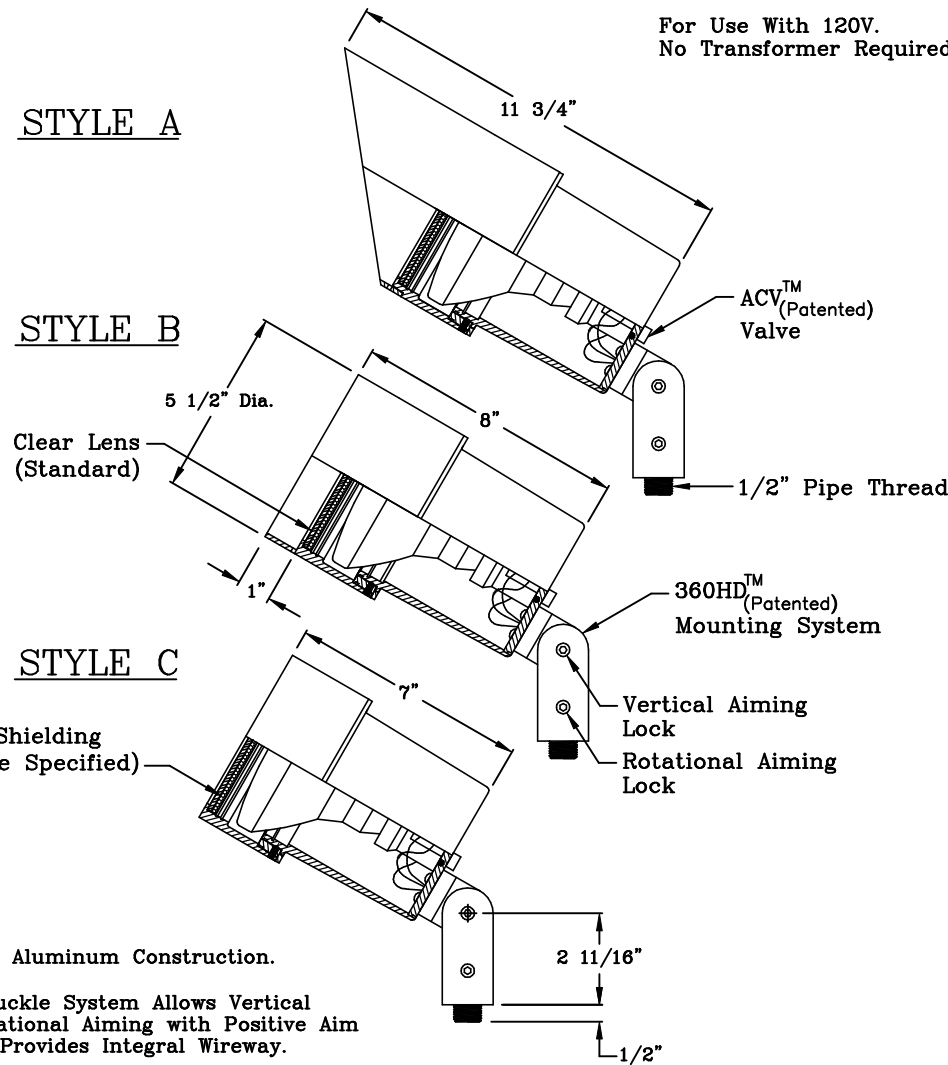
Cap Style: \_\_\_\_\_

- A - 45°
- B - 90°
- C - Flush

**STYLE A**

**STYLE B**

**STYLE C**



**Features:**

All Precision Machined Aluminum Construction.

360HD™ (Patented) Knuckle System Allows Vertical to Horizontal and Rotational Aiming with Positive Aim and Lock Technology. Provides Integral Wireway.

Medium Base Pulse Rated Lampholder With 250°C, 18 Ga. Wire Leads (Leads Extend 6" Beyond Mounting Knuckle).

Utilizes PAR38 Halogen Lamp, 90W, 120W, 150W, or 250W.

Raintight Optical Compartment, Clear Tempered Glass Lens, Factory Sealed.

Tamperproof Design, Utilizes Three Hex Head Set Screws.

ACV™ (Patented) Valve System.

Polyester Powdercoat Finishes Standard. (Specify)



<b>ALPS SERIES™</b>		
3/03	<b>B-K LIGHTING, INC.</b>	DRAWING NUMBER SUB-1178-01