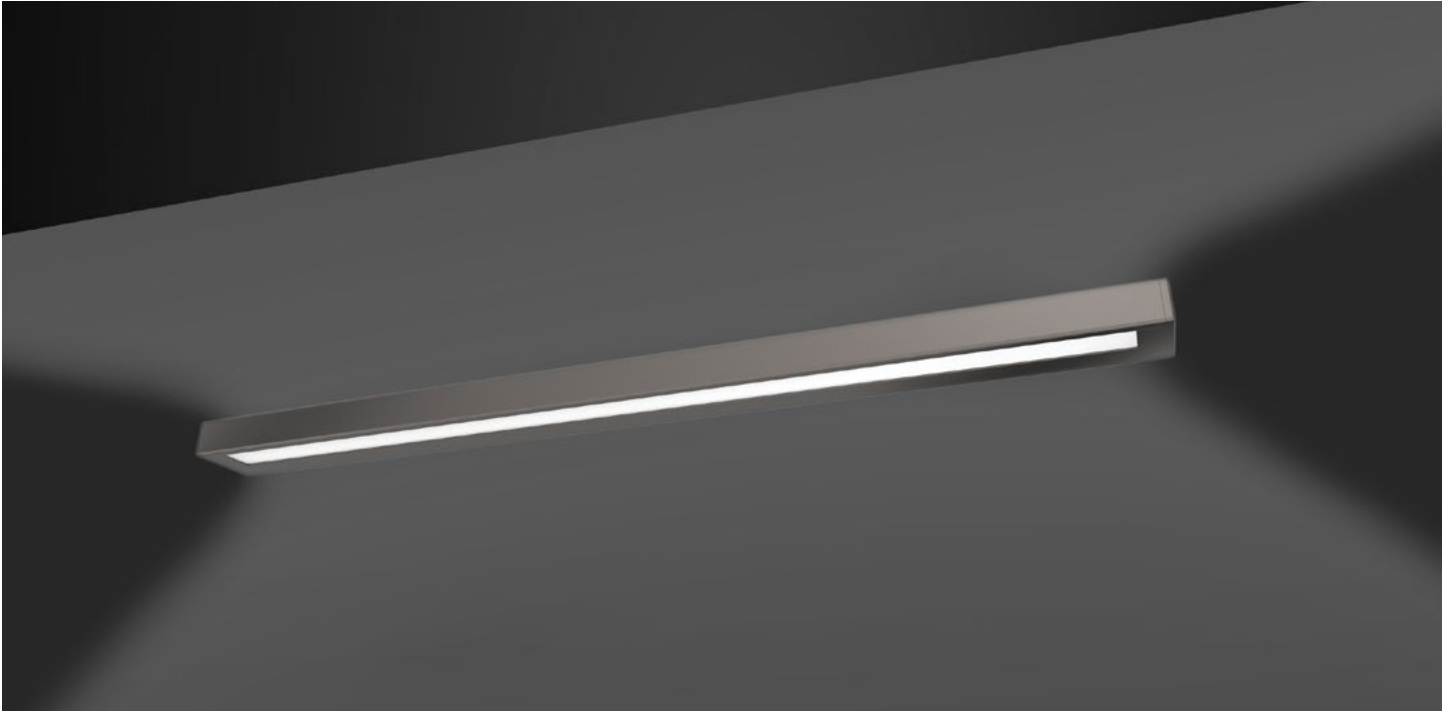


a·light  
elements

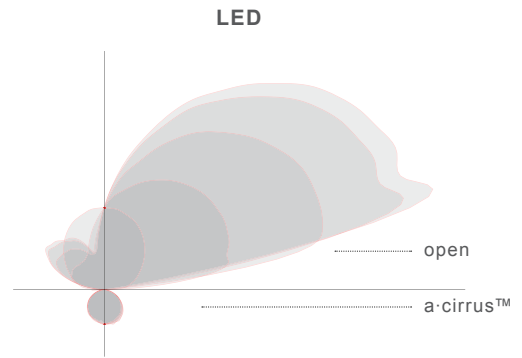
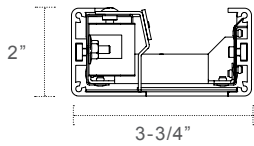


A4  
wall

direct/indirect



wall



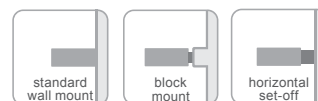
LED per foot	1 board in cross	
	watts/ft	lumens/ft
LS	5	600
LH	10	1200

Lumens at board at 4000k.  
Consult IES files online for delivered lumens.  
Specifications subject to change.

**Available Light Platforms:**



**Available Mounting:**



interior

**Mounting:**

*Standard Wall Mount:* Fixture mounts directly to wall. Power connects inside fixture using BX or MX style wiring. ADA compliant.

*Wall Blocks:* Precisely milled aluminum block mounts provide minimalistic appearance. 3/8", 1/2", 1" or 2" deep. (2) blocks provided per fixture, lengths 8ft or less; (3) blocks per 12ft.

*Horizontal Set-Off Brackets:* 1" or 1/2" deep set-off brackets cover a single gang box (by others). (2) brackets provided per length up to 12ft.

**Lengths:**

All length dimensions are nominal, used for general length identification purposes. Actual lengths may vary by several inches. Lengths to 12' are individual fixtures and do not connect. Lengths beginning with "R" designate standard, nominal rows comprised of 4' and/or 8' sections. Mid plate joiners are visible every 4'.

Specify all modifications with the "integrations" specification sheet: nominal lengths other than the standards available here, rows longer than 24', exact lengths, patterns, span mount, mullion mount, etc.

**LED:**

5yr warranty. >60,000hr LED life. Tested to LM-79 and LM-80. See wattage/lumen table for specifications per foot. All specifications are subject to change.

**T5/T5HO:**

Single lamp in cross section only. Program start is factory standard.

**Construction:**

60% recycled aluminum extruded housing. Precision milled endcaps.

**Finish:**

Electrostatically applied powder coat finish.

**Listing:**

UL/CUL. Damp Location.

**Companion Luminaires:**

A1 suspended/ceiling

**Legend:**

1. Emergency ballast not applicable on lengths 3ft or less.
2. Standard multi-circuiting: see fixture chart below.
3. Standard on/off occupancy sensor: Wattstopper FS-205 with minimal 1" diameter.
4. Standard occupancy sensor with photocell: Wattstopper FS-205 wired for daylight harvesting. Requires 0-10V dimming ballast.
5. Not available with LED.

Series: A4

**Dimension:** \_\_\_\_\_

nominal 3'	<sup>1</sup> 3
nominal 4'	4
nominal 8'	8
nominal 12'	12
nominal 16' row	R16
nominal 20' row	R20
nominal 24' row	R24

**Lamping:** \_\_\_\_\_

LED standard output	LS
LED high output	LH
T5 (1)	S
T5HO (1)	H

**LED Temp (if applicable):** \_\_\_\_\_

3000k	30
3500k	35
4000k	40

**Voltage:** \_\_\_\_\_

universal 120V - 277V	U
120V	1
277V	2
347V	3

**Downlight Optics:** \_\_\_\_\_

a-cirrus™ lens	A
white blade baffle <sup>5</sup>	B

**Upper Optics:** \_\_\_\_\_

open/no lens	O
clear dust cover	D
100% downlight (direct only)	H
sawtooth <sup>5</sup>	T

**Mounting:** \_\_\_\_\_

standard wall mount	R
wall mount blocks 1"	M1
wall mount blocks 2"	M2
wall mount blocks 3/8"	M3
wall mount blocks 1/2"	M5
horizontal setoff bracket 1"	H1
horizontal setoff bracket 1/2"	H5

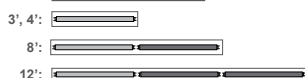
**Finish:** \_\_\_\_\_

a-lightanium™	T
satin white	W
satin black	B
textured eggshell white	E
other - specify RAL#	O

**Options:** \_\_\_\_\_

dimming - specify manufacturer, model/series and voltage	D
emergency - specify model/series or lumens <sup>1</sup>	E
external fusing	F
multi-circuit <sup>2</sup>	M
new york city code	N
occupancy sensor <sup>3</sup>	O
photocell/daylight sensor <sup>4</sup>	P

**Multi-circuit standards**



wall