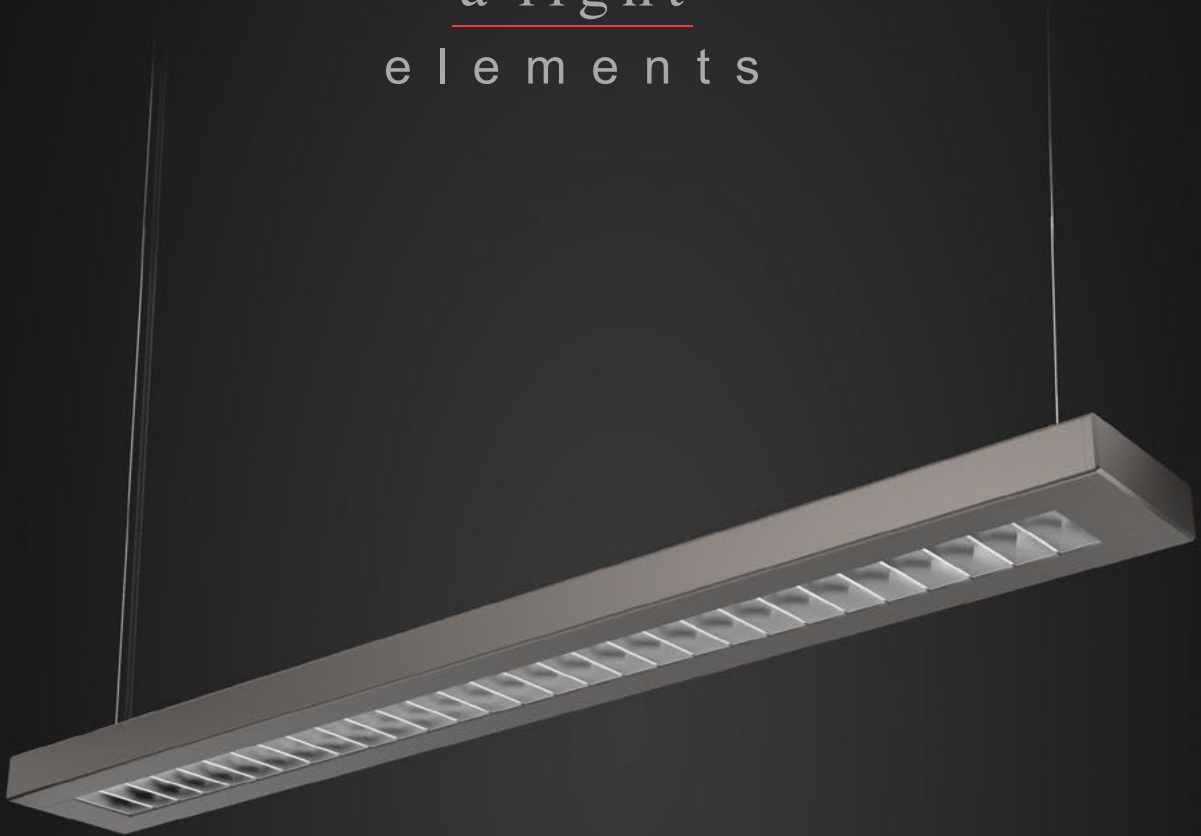
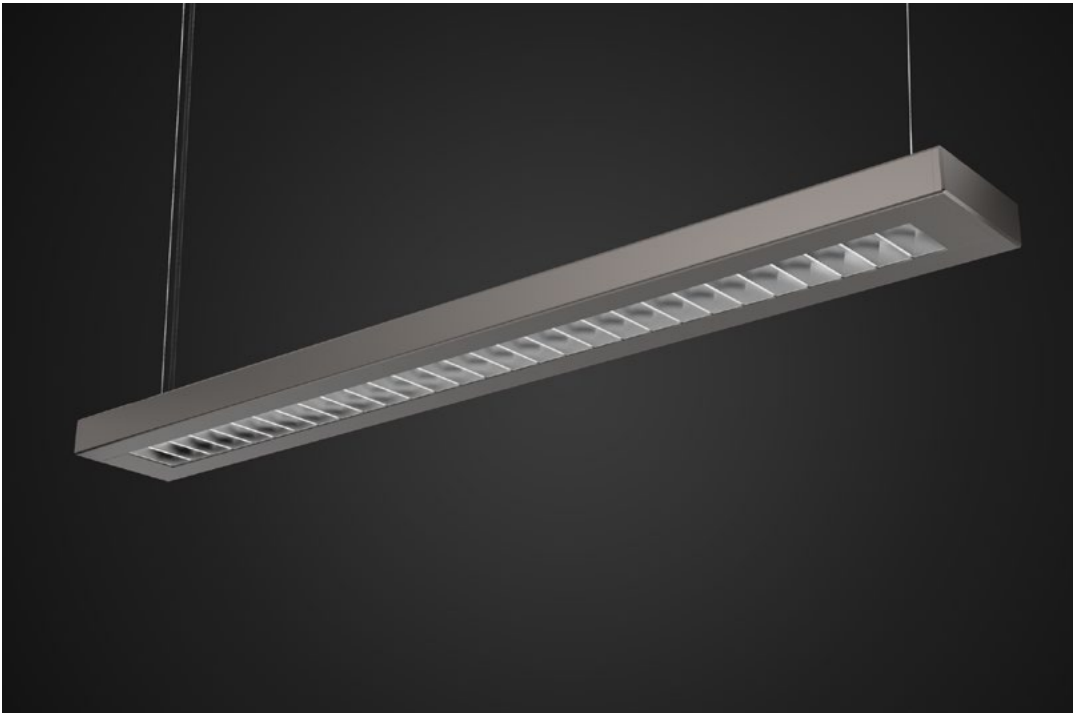


a·light
elements



A1
suspended | ceiling

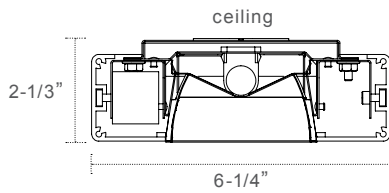
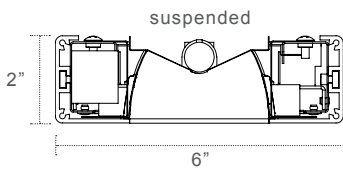
direct/indirect or direct only



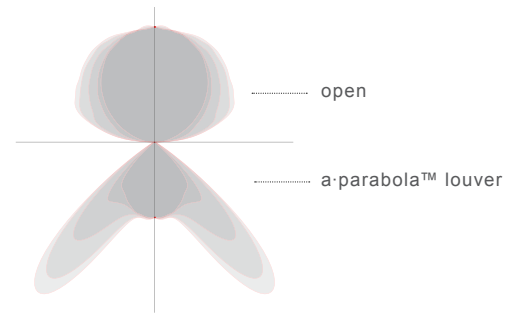
suspended



ceiling



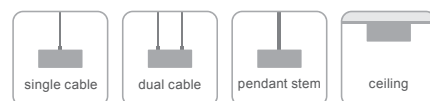
single T5HO fluorescent



Available Light Platforms:



Available Mounting:



interior

Mounting:

Single or Dual Cable: (1) or (2) 4', 1mm stainless steel aircraft cable w/ fully adjustable grippers and locking device. 5' plastic-coated, silver-braided, flexible cord. Satin white, square canopy is standard for single cable, rectangle for dual cable.

Pendant/Stem: 3/8" stem and round canopy, painted white. Indicate pendant length. If specified for earthquake zone, a-light will provide swivel canopies.

Ceiling/Surface Mount: Fixture mounts to ceiling via a pre-attached mounting plate. Power connects through plate knockouts inside fixture using BM or MX style wiring. Surface mounted version is 1/4" wider and 1/3" higher.

Lengths:

All length dimensions are nominal, used for general length identification purposes. Actual lengths may vary by several inches. Lengths to 12' are individual fixtures and do not connect. Lengths beginning with "R" designate standard, nominal rows comprised of 4' and/or 8' sections.

Specify all modifications with the "integrations" specification sheet: nominal lengths other than the standards available here, rows longer than 24', exact lengths, etc.

T5/T5HO:

Single or dual lamps in cross section. Program start is factory standard.

Construction:

60% recycled aluminum extruded housing. Precision milled endcaps.

Finish:

Electrostatically applied powder coat finish.

Listing:

UL/CUL. Damp Location.

Companion Luminaires:

A2 suspended, A4 wall, D5 recessed

Legend:

1. Emergency ballast not applicable on lengths 3ft or less.
2. Standard multi-circuiting: see fixture chart below.
3. Standard on/off occupancy sensor: Wattstopper FS-205 with minimal 1" diameter.
4. Standard occupancy sensor with photocell: Wattstopper FS-205 wired for daylight harvesting. Requires 0-10V dimming ballast.
5. Surface mounted version requires "H" in upper optics.
6. T5/T5HO only, 1 lamp in cross section.
7. Library baffle is satin white, regardless of fixture color chosen, and includes a different reflector specific to library stacks.

Series: A1

Dimension: _____

- nominal 3' ¹ 3
- nominal 4' 4
- nominal 8' 8
- nominal 12' 12
- nominal 16' row R16
- nominal 20' row R20
- nominal 24' row R24

Lamping: _____

- T5 (1) S
- T5HO (1) H
- T5 (2) D
- T5HO (2) O

Voltage: _____

- universal 120V - 277V U
- 120V 1
- 277V 2
- 347V 3

Downlight Optics: _____

- a-parabola™ louver ⁶ P
- library baffle optics (satin white) ⁷ B
- a-cirrus™ lens A
- HTLO™ lens H

Upper Optics: _____

- open/no lens O
- 80% downlight E
- 100% downlight (direct only) ⁵ H

Mounting: _____

- single aircraft cable S
- dual aircraft cable D
- pendant / rigid stem - indicate stem length P__
- pendant / rigid stem for earthquake zone - indicate stem length PV__
- ceiling/surface mount ⁵ F

Finish: _____

- a-lightanium™ T
- satin white W
- satin black B
- textured eggshell white E
- other - specify RAL# O

Options: _____

- dimming - specify manufacturer, model/series and voltage D
- emergency - specify model/series or lumens ¹ E
- external fusing F
- multi-circuit ² M
- new york city code N
- occupancy sensor ³ O
- photocell/daylight sensor ⁴ P

suspended

ceiling

Multi-circuit standards

